

# PARKWAY SQUARE SHOPPING CENTER

NEW Broker Bonus Available



16600 - 16890 Southcenter Pkwy, Tukwila, WA 98188

**Jack Rosen**  
(425) 289-2221  
jack@rosenharbottle.com

**Brian Stewart**  
(425) 289-2222  
brians@rosenharbottle.com

**RH** ROSEN  
HARBOTTLE  
COMMERCIAL REAL ESTATE



## Rare Retail Available on Southcenter Pkwy

1,120 SF - 10,455 SF Available

\$18.00 - \$30.00 / SF, NNN

**\$1.00/SF Broker Bonus on Suite 16830**

Leases must be 3 years+ and signed by 12/31/2017

### Property Features:

- Outdoor Daycare/Play Area Available (Suite 16830)
- 3 Grade-Level Doors (Suite 16830)
- Endcap Space (Suite 16600-A)
- Ample Parking
- Convenient Access to I-5 & I-405
- Quarter Mile Distance to Westfield-Southcenter Mall
- Tenants Include: Value Village, Jared Jewelers & Jimmy John's
- High Visibility Center with Great Traffic Counts



Suite	Square Feet	Rate
-------	-------------	------

16600-A	4,691 SF	Call agent
---------	----------	------------

Notes: Endcap space available with frontage on Southcenter & visibility to I-5

16832	1,730 SF	\$17.40/SF, Gross
-------	----------	-------------------

Notes: Rare industrial space on Southcenter. 2 auto-GL doors

16830	6,765 SF-10,455 SF	\$18.00/SF, NNN
-------	--------------------	-----------------

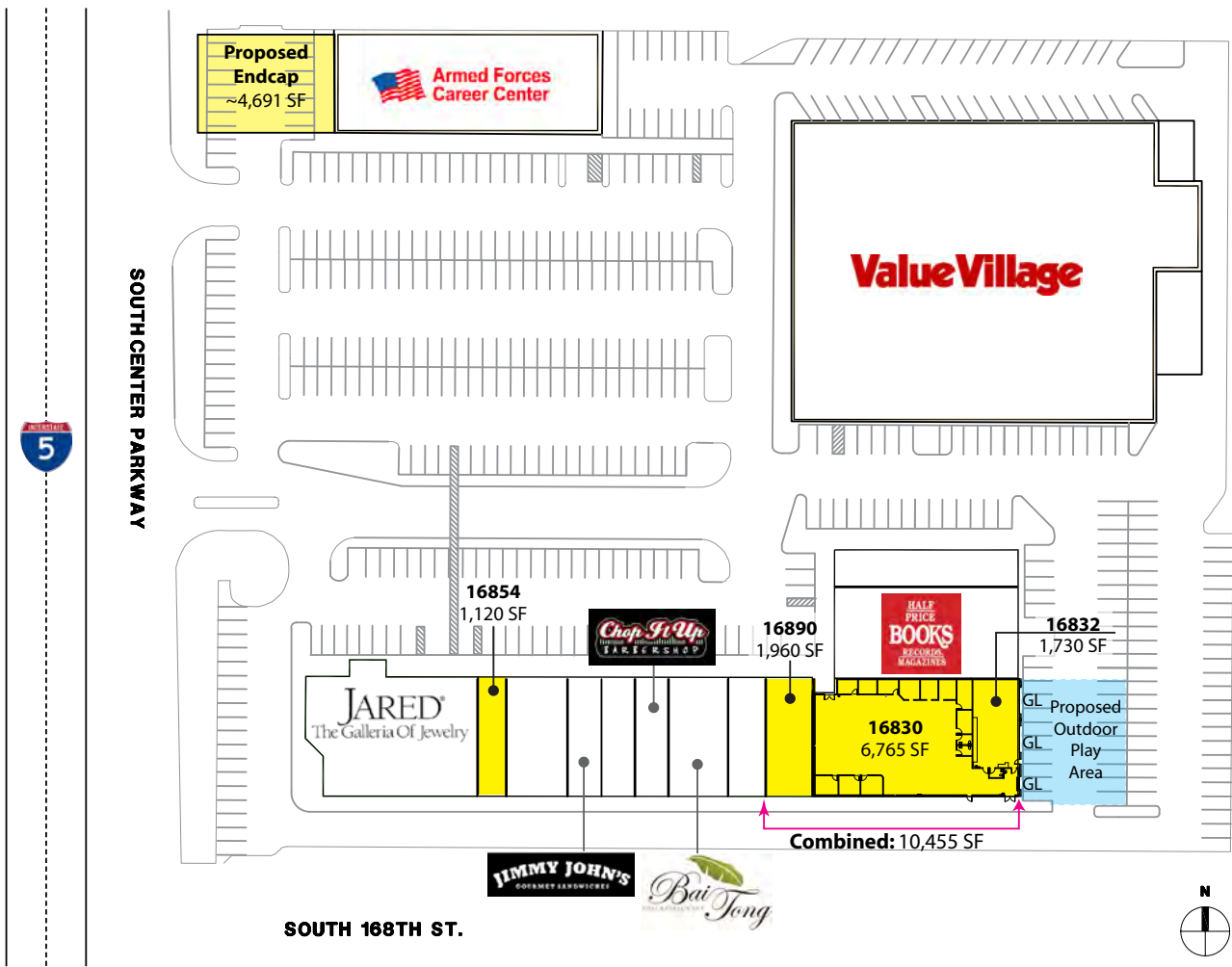
Notes: Improved space with HVAC and plumbing throughout. Outdoor play area available for daycare use. Large, top-slot on monument sign available

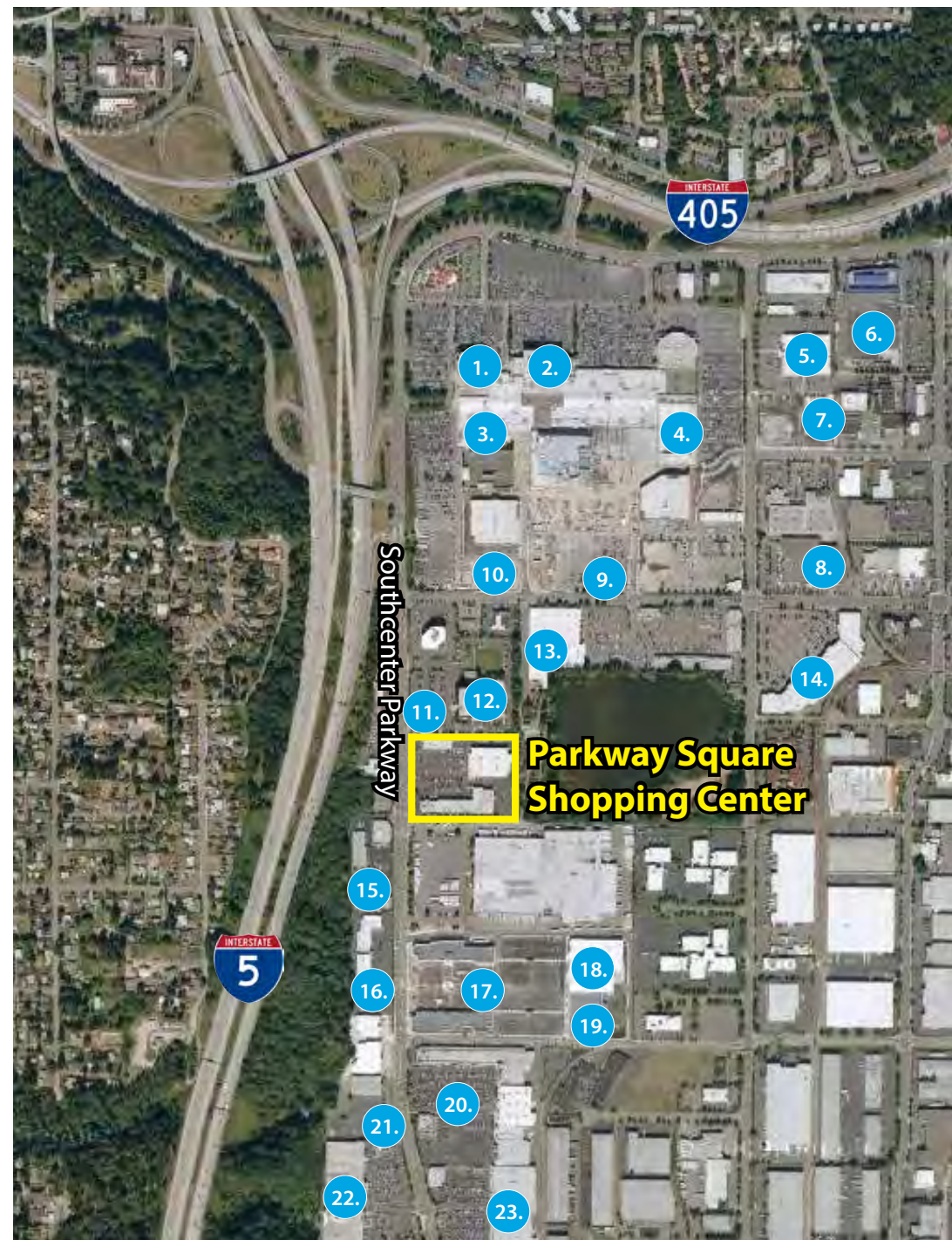
16890	1,960 SF	\$25.00/SF, NNN
-------	----------	-----------------

Notes: Former nail salon with 2 POs and 1 RR

16854	1,120 SF	\$30.00/SF, NNN
-------	----------	-----------------

Notes: Adjacent to Jared Jewelers. Open retail with 1 RR





- |                              |                               |
|------------------------------|-------------------------------|
| 1. Nordstrom                 | 18. Kohl's                    |
| 2. Macy's                    | 19. Petco                     |
| 3. Sears                     | Nordstrom Rack                |
| 4. JCPenney                  | 20. Best Buy                  |
| 5. ACME Bowling              | Michael's                     |
| 6. Lowe's                    | Ulta                          |
| 7. LA Fitness                | Red Robin                     |
| 8. REI                       | Old Navy                      |
| Bed Bath & Beyond            | Pier1                         |
| Guitar Center                | Aaron Brother's               |
| 9. Olive Garden              | 21. Ross Dress for Less       |
| 10. Cheesecake Factory       | Famous Footwear               |
| 11. Outback Steakhouse       | Vitamin Shoppe                |
| 12. Hilton DoubleTree Suites | 22. Jo-Ann Fabrics and Crafts |
| 13. Target                   | Babies 'R' Us   Toys 'R' Us   |
| 14. Barnes & Noble           | PetSmart                      |
| Office Depot                 | 23. Tuesday Morning           |
| Total Wine & More            | David's Bridal                |
| GameStop                     | Macy's Furniture Gallery      |
| 15. Mattress Depot           |                               |
| Men's Warehouse              |                               |
| 16. BevMo                    |                               |
| 17. DSW                      |                               |
| Lane Bryant                  |                               |
| Carter's                     |                               |
| The Old Spaghetti Factory    |                               |
| Panera                       |                               |