

# MEADOW CREEK OFFICE PARK

22500-22619 SE 64<sup>th</sup> Place, Issaquah, WA 98027



## CLASS A OFFICE & MEDICAL SPACE

752 SF - 2,641 SF Available

\$22.00-\$27.00/SF, NNN

### FEATURES:

- Minutes from Costco Headquarters
- Class A Finishes
- Amazing Location off I-90 at Front St./E Lake Sammamish Pkwy
- Nearby Amenities Include Retailers, Grocers, Restaurants, Hospital & Parks
- Private Balcony & Free Surface Parking
- Park-Like, Campus Setting

For more information, contact:

**ROSEN~HARBOTTLE**  
**COMMERCIAL REAL ESTATE**

**Brian Stewart**

(425) 289-2222

brians@rosenharbottle.com

**Jerry Harbottle**

(425) 289-2216

jerry@rosenharbottle.com

www.rosenharbottle.com

Rosen~Harbottle Commercial Real Estate | P.O. Box 5003 Bellevue, WA 98009-5003  
phone: (425) 454-3030 fax: (425) 454-6705 | www.rosenharbottle.com

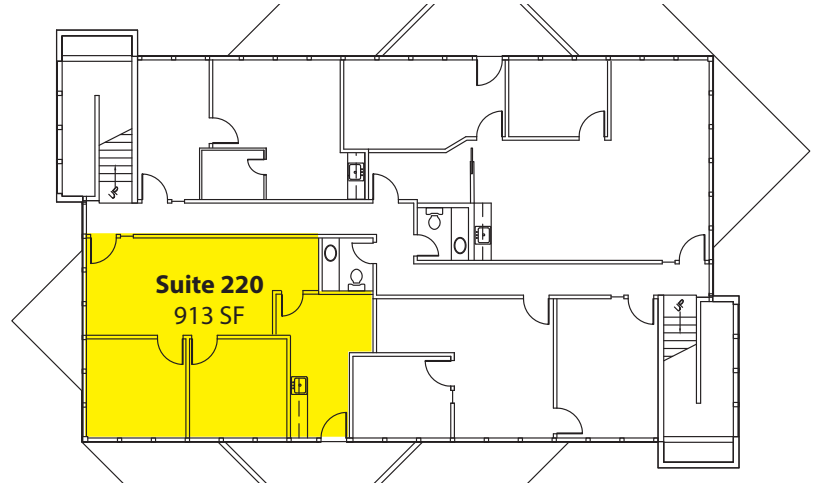
The information provided has been obtained from sources believed reliable. While we do not doubt its accuracy, we have not verified and make no guarantee, warranty or representation about it. It is your sole responsibility to independently confirm its accuracy and completeness.

# MEADOW CREEK OFFICE PARK

22500-22619 SE 64<sup>th</sup> Place, Issaquah, WA 98027

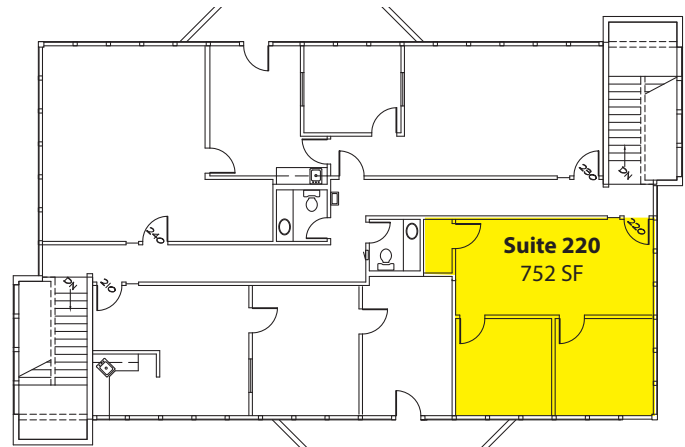
## Building D - Second Floor

2 Large POs, Kitchenette, Reception, &  
Open Work Space  
Available 1/1/2015



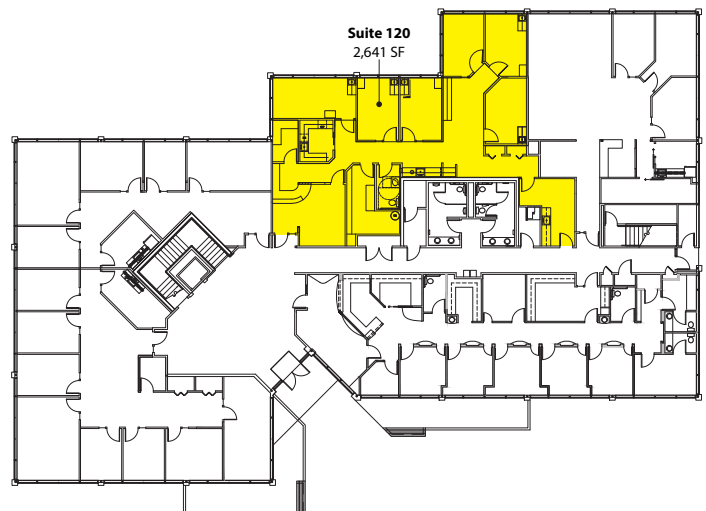
## Building F - Second Floor

Suite 220:  
2 POs & Reception  
Available 3/1/2015



## Building G - First Floor

Extensive Medical Build Out  
Sublease through 12/31/2015  
Longer term available through Landlord.



Floor plans not to scale as shown

Rosen~Harbottle Commercial Real Estate | P.O. Box 5003 Bellevue, WA 98009-5003  
phone: (425) 454-3030 fax: (425) 454-6705 | [www.rosenharbottle.com](http://www.rosenharbottle.com)

The information provided has been obtained from sources believed reliable. While we do not doubt its accuracy, we have not verified and make no guarantee, warranty or representation about it. It is your sole responsibility to independently confirm its accuracy and completeness.

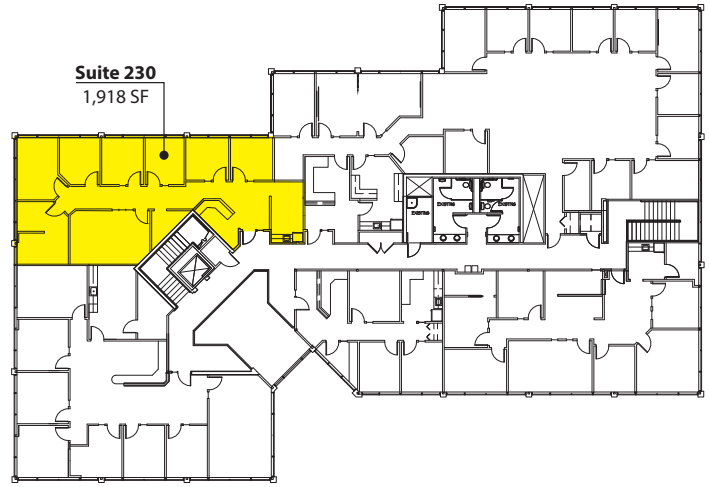


# MEADOW CREEK OFFICE PARK

22500-22619 SE 64<sup>th</sup> Place, Issaquah, WA 98027

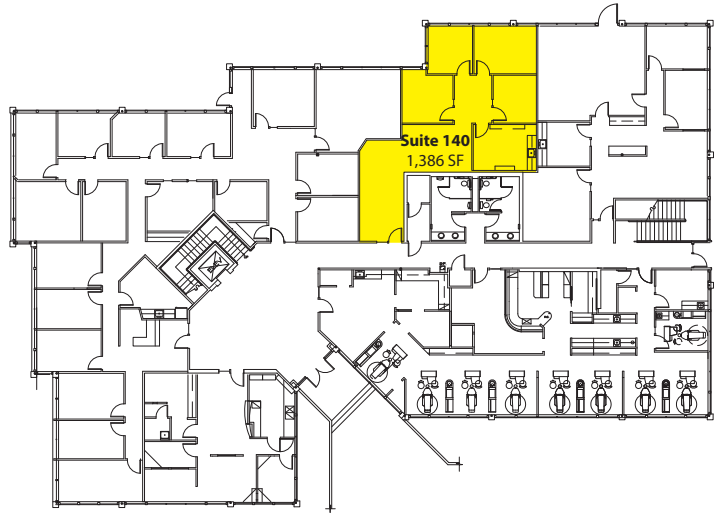
## Building G - Second Floor

7 POs, Kitchenette/Break Room, & Reception  
Sublease through 9/14/2017  
Longer term available through Landlord.

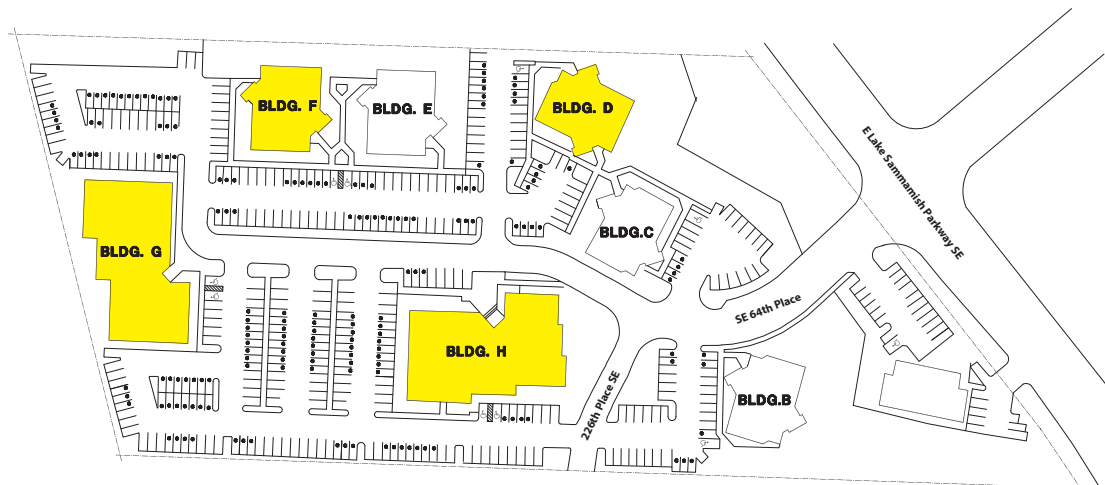


## Building H - First Floor

3 POs, Kitchenette/Break Room,  
Reception & Open Area  
Available 3/15/2015



## Site Plan



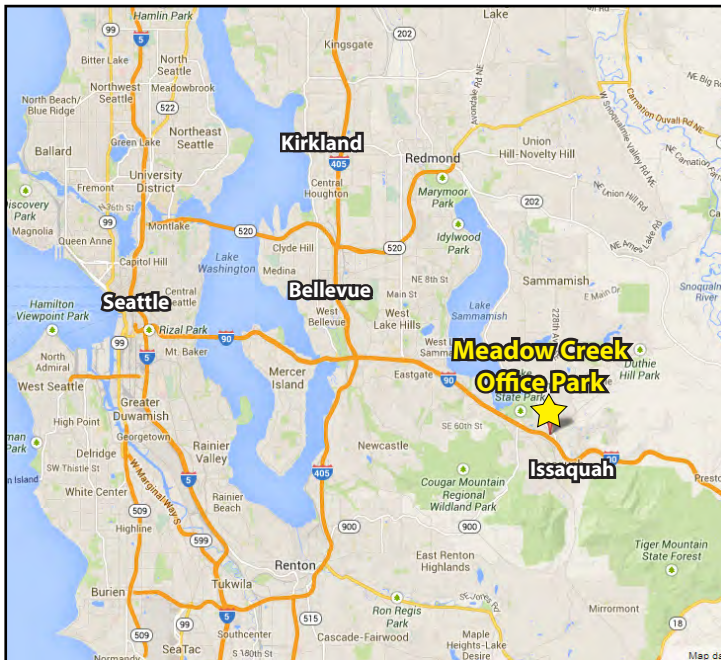
Rosen~Harbottle Commercial Real Estate | P.O. Box 5003 Bellevue, WA 98009-5003  
phone: (425) 454-3030 fax: (425) 454-6705 | [www.rosenharbottle.com](http://www.rosenharbottle.com)

The information provided has been obtained from sources believed reliable. While we do not doubt its accuracy, we have not verified and make no guarantee, warranty or representation about it. It is your sole responsibility to independently confirm its accuracy and completeness.



# MEADOW CREEK OFFICE PARK

22500-22619 SE 64<sup>th</sup> Place, Issaquah, WA 98027



For more information, contact:

**ROSEN~HARBOTTLE  
COMMERCIAL REAL ESTATE**

**Brian Stewart**

(425) 289-2222

[brians@rosenharbottle.com](mailto:brians@rosenharbottle.com)

**Jerry Harbottle**

(425) 289-2216

[jerry@rosenharbottle.com](mailto:jerry@rosenharbottle.com)

[www.rosenharbottle.com](http://www.rosenharbottle.com)

Rosen~Harbottle Commercial Real Estate | P.O. Box 5003 Bellevue, WA 98009-5003  
phone: (425) 454-3030 fax: (425) 454-6705 | [www.rosenharbottle.com](http://www.rosenharbottle.com)

The information provided has been obtained from sources believed reliable. While we do not doubt its accuracy, we have not verified and make no guarantee, warranty or representation about it. It is your sole responsibility to independently confirm its accuracy and completeness.