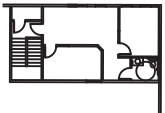
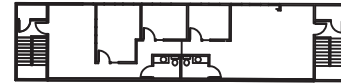
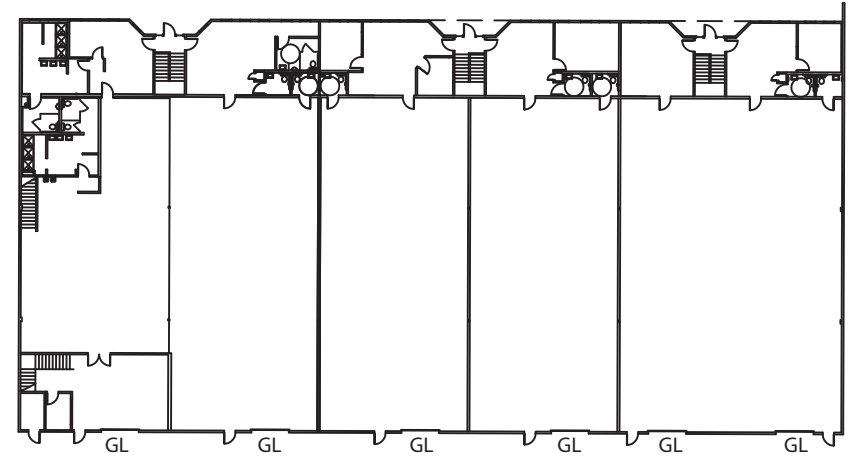
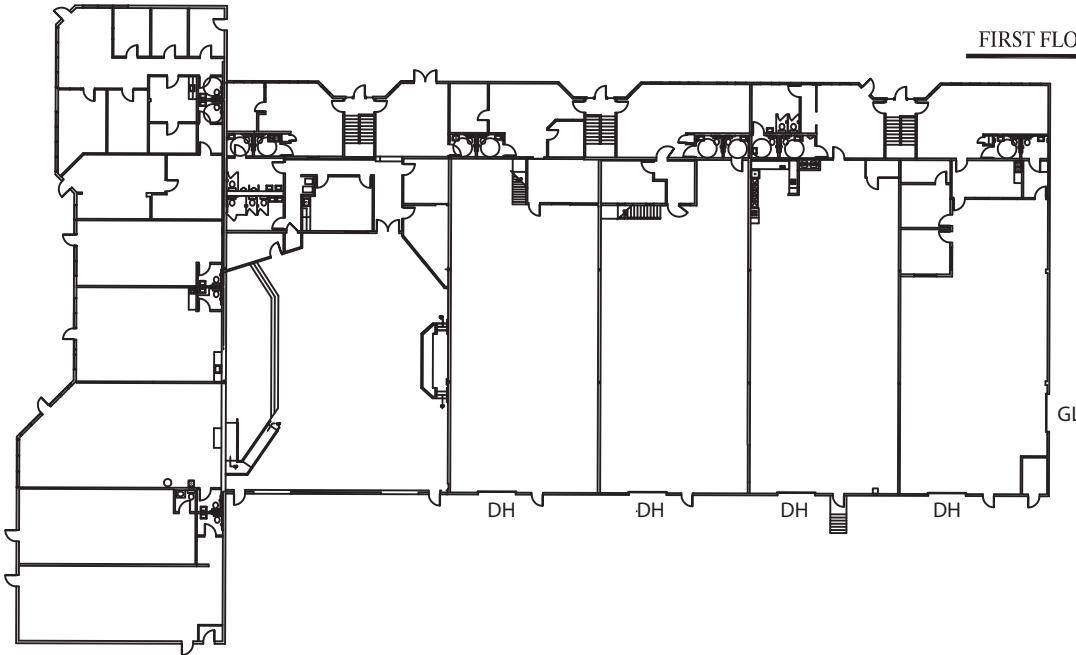


Suite A-204  
725 SF

SECOND FLOOR OFFICES



FIRST FLOOR OFFICE/WRHS



**SITE PLAN**  
NOT TO SCALE

**LYNNWOOD EAST BUSINESS PARK**  
2027 - 2031 196th STREET S. W.  
LYNNWOOD, WA .

ROSEN | HARBOTTLE