

# BEAR CREEK PLAZA

19011 Woodinville-Snohomish Road NE, Woodinville, WA 98072



**IDEAL USES: OFFICE, CHURCH OR ASSEMBLY,  
DAYCARE, RECREATION, ETC.**

**1,122 SF - 10,222 SF Available**

## **BUILDING FEATURES:**

- Excellent Freeway Access to SR-522 & I-405
- Building Signage Facing SR 522 & Woodinville-Snohomish Road
- Elevator
- Abundant Parking
- Sprinklered Building
- Close to Downtown Woodinville, Costco & Wineries
- Rates Shown on Page 2

ROSEN | HARBOTTLE  
**RH**

For more information, contact:

**ROSEN~HARBOTTLE  
COMMERCIAL REAL ESTATE**

**Caleb Farnworth, CCIM**

(425) 289-2235

calebf@rosenharbottle.com

www.rosenharbottle.com

Rosen~Harbottle Commercial Real Estate | P.O. Box 5003 Bellevue, WA 98009-5003  
phone: (425) 454-3030 fax: (425) 454-6705 | [www.rosenharbottle.com](http://www.rosenharbottle.com)

The information provided has been obtained from sources believed reliable. While we do not doubt its accuracy, we have not verified and make no guarantee, warranty or representation about it. It is your sole responsibility to independently confirm its accuracy and completeness.

# BEAR CREEK PLAZA

19011 Woodinville-Snohomish Road NE, Woodinville, WA 98072

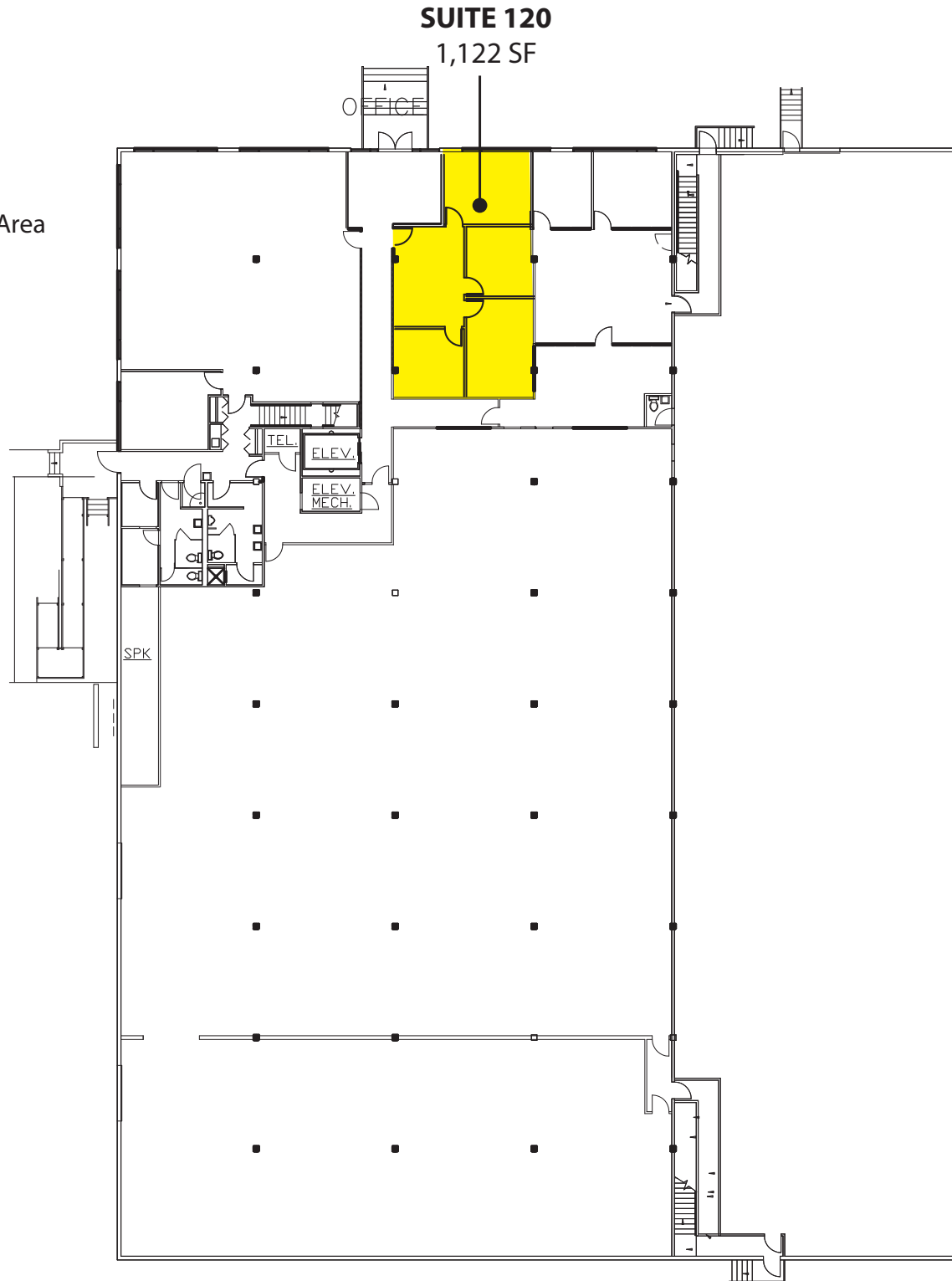
## FIRST FLOOR

### Suite 120 - 1,122 SF

\$22.50/SF, Gross

Available 12/1/2016

- 3 POs & Conference Room
- Large Reception & Open Work Area
- Direct Lobby Access



Rosen~Harbottle Commercial Real Estate | P.O. Box 5003 Bellevue, WA 98009-5003  
phone: (425) 454-3030 fax: (425) 454-6705 | [www.rosenharbottle.com](http://www.rosenharbottle.com)

The information provided has been obtained from sources believed reliable. While we do not doubt its accuracy, we have not verified and make no guarantee, warranty or representation about it. It is your sole responsibility to independently confirm its accuracy and completeness.

# BEAR CREEK PLAZA

19011 Woodinville-Snohomish Road NE, Woodinville, WA 98072

## SECOND FLOOR

**Suites 210 and 240 can be leased together for 10,222 SF total.**

**Suite 210 - 8,404 SF**

**\$17.50/SF, Gross**

**Available w/ 60 days notice**

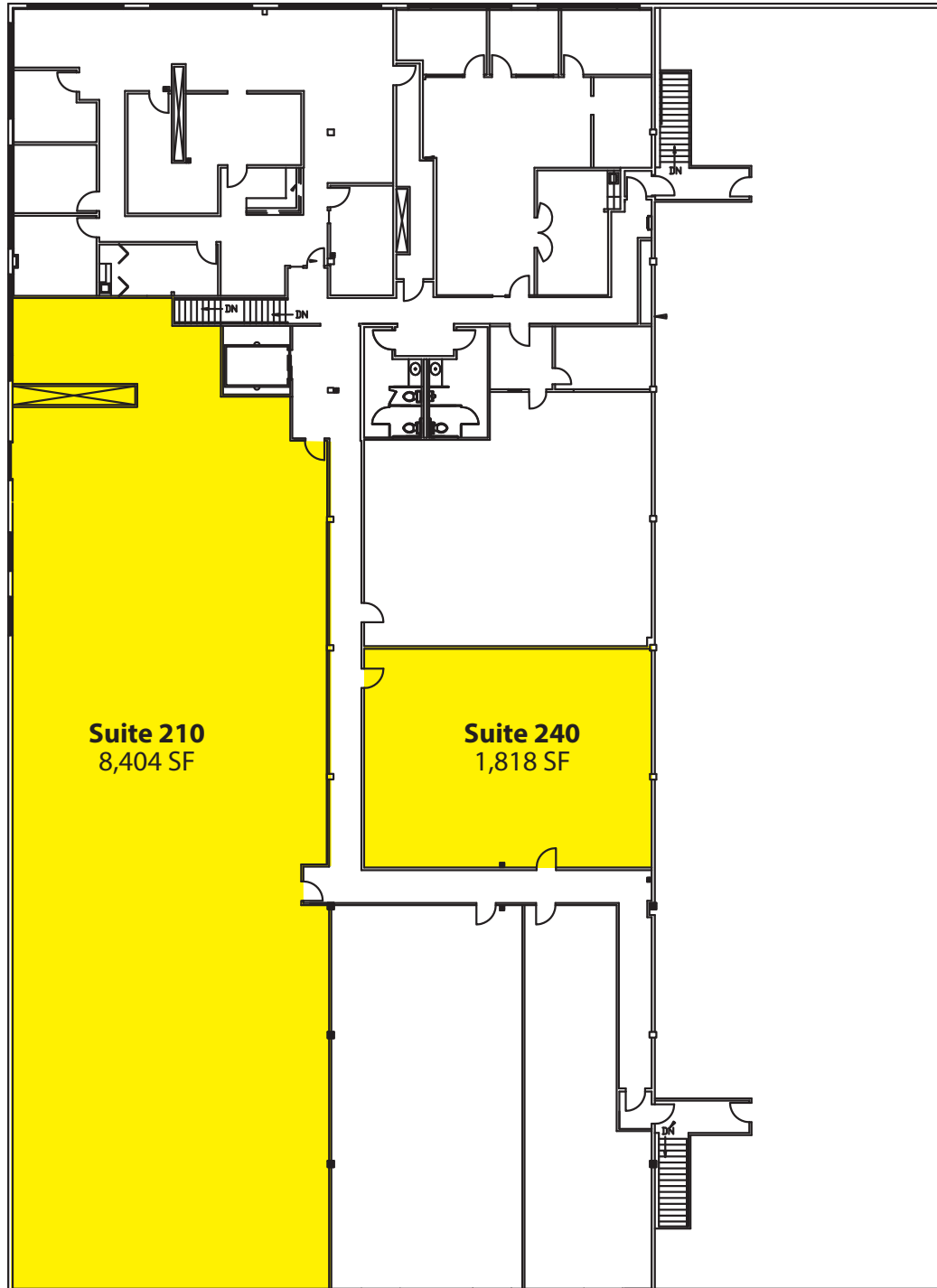
- Built Out as Church
- Nice Finishes & Efficient Layout
- Corner Suite, Off-Lobby Entrance

**Suite 240 - 1,818 SF**

**\$14.50/SF, Gross**

**Available w/ 30 days notice**

- Open Space
- Interior, Vaulted Ceiling
- 3 Skylights



Rosen~Harbottle Commercial Real Estate | P.O. Box 5003 Bellevue, WA 98009-5003  
phone: (425) 454-3030 fax: (425) 454-6705 | [www.rosenharbottle.com](http://www.rosenharbottle.com)

The information provided has been obtained from sources believed reliable. While we do not doubt its accuracy, we have not verified and make no guarantee, warranty or representation about it. It is your sole responsibility to independently confirm its accuracy and completeness.



# BEAR CREEK PLAZA

19011 Woodinville-Snohomish Road NE, Woodinville, WA 98072



For more information, contact:

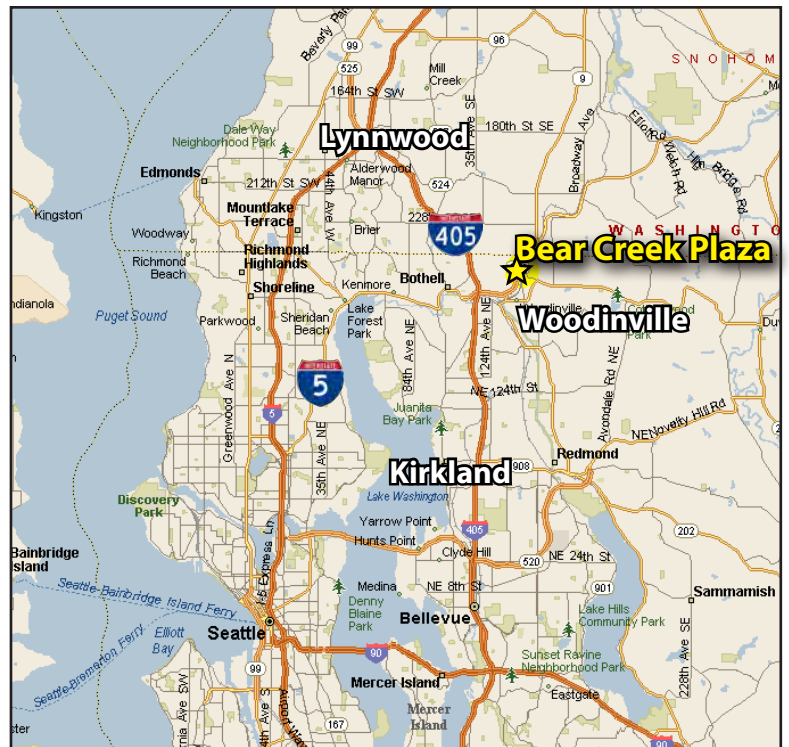
**ROSEN~HARBOTTLE  
COMMERCIAL REAL ESTATE**

**Caleb Farnworth, CCIM**

(425) 289-2235

calebf@rosenharbottle.com

www.rosenharbottle.com



Rosen~Harbottle Commercial Real Estate | P.O. Box 5003 Bellevue, WA 98009-5003  
phone: (425) 454-3030 fax: (425) 454-6705 | www.rosenharbottle.com

The information provided has been obtained from sources believed reliable. While we do not doubt its accuracy, we have not verified and make no guarantee, warranty or representation about it. It is your sole responsibility to independently confirm its accuracy and completeness.