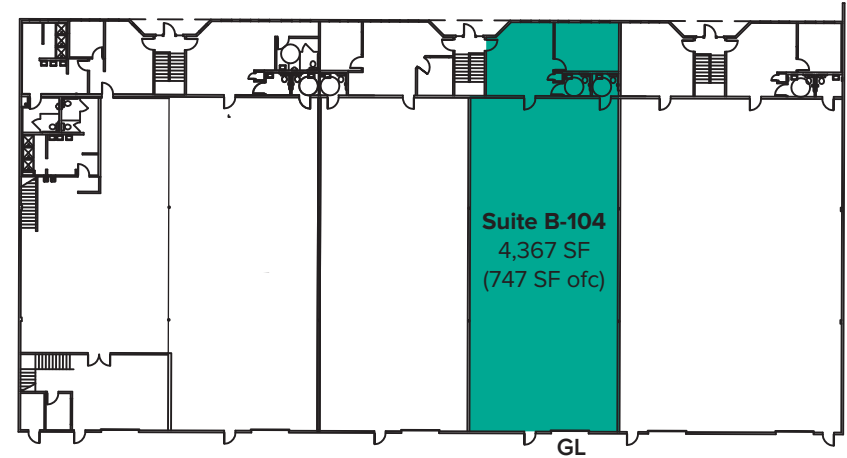
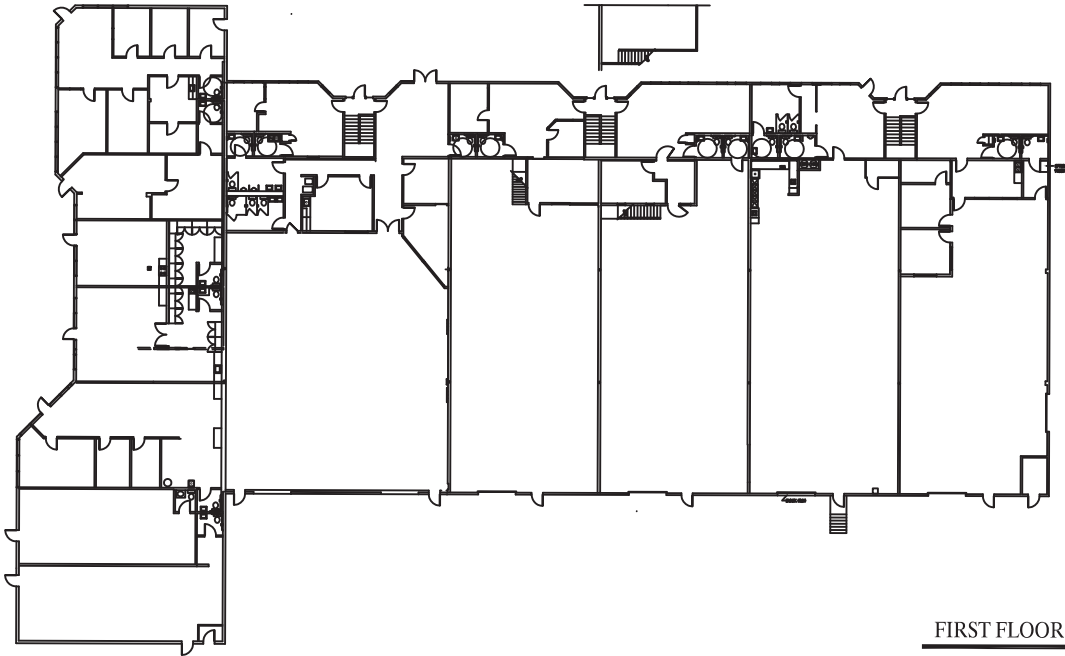
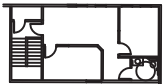
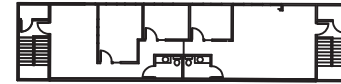


Suite A-204  
725 SF

SECOND FLOOR OFFICES



FIRST FLOOR OFFICE/WRHS

Suite B-104  
4,367 SF  
(747 SF ofc)

GL

**SITE PLAN**  
NOT TO SCALE

**LYNNWOOD EAST BUSINESS PARK**  
2027 - 2031 196th STREET S.W.  
LYNNWOOD, WA

