

RH North Creek Business Center

11810-11824 North Creek Parkway N, Bothell, WA 98011



Building 1



Building 2



Building 6

OFFICE, TECH/ASSEMBLY & FLEX \$14.00-\$16.50/SF, NNN

Bldg-Suite	Square Feet	Available
2-100	6,000 SF-24,705 SF	2/1/2015
Heavy power, HVAC throughout & versatile loading.		
1-101	3,975 SF-6,155 SF (3,975 SF ofc)	10/1/2014
Tech/assembly space with hood, plumbing. Office with POs, storage, break room, conference room.		
6-110	2,383 SF (1,800 SF ofc)	11/1/2014
Open office with multiple POs, direct access, small storage and GL door.		



For more information, contact:

ROSEN~HARBOTTLE
COMMERCIAL REAL ESTATE

Brian Stewart

(425) 289-2222

brians@rosenharbottle.com

Caleb Farnworth, CCIM

(425) 289-2235

calebf@rosenharbottle.com

www.rosenharbottle.com

FEATURES:

- Great North Creek Location
 - Off I-405, Exit 24 in Bothell (King County)
- Nearby Amenities: Restaurants, Retail, Childcare, Hotel, & Sports Fields
- Jogging & Parcourse Trails along North Creek
- New Paint & Signage

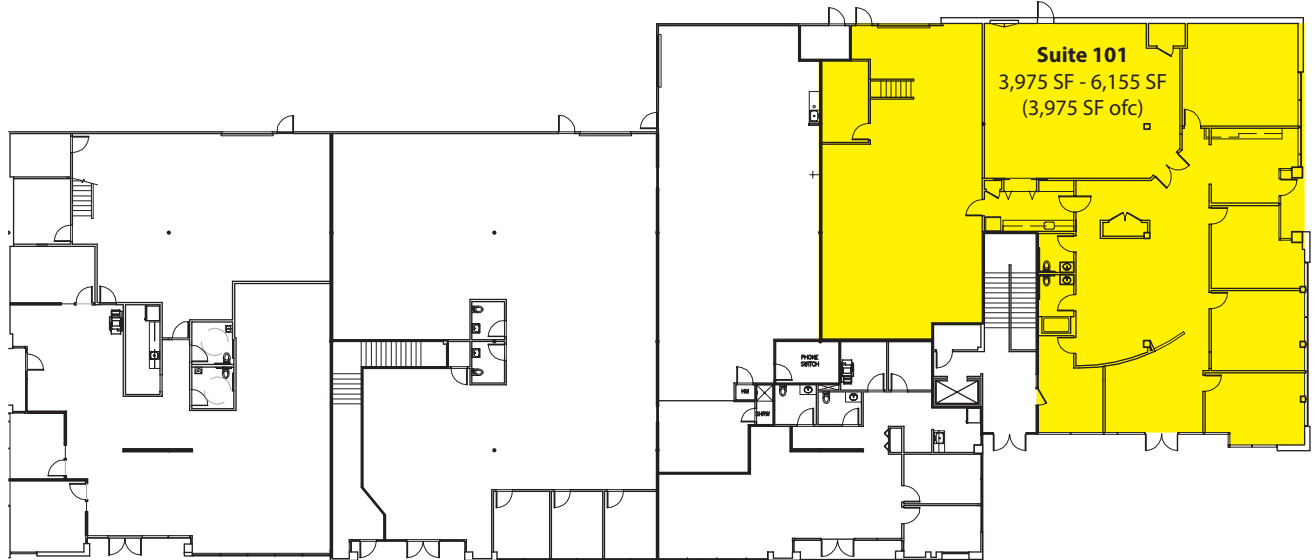
Rosen~Harbottle Commercial Real Estate | P.O. Box 5003 Bellevue, WA 98009-5003
phone: (425) 454-3030 fax: (425) 454-6705 | www.rosenharbottle.com

The information provided has been obtained from sources believed reliable. While we do not doubt its accuracy, we have not verified and make no guarantee, warranty or representation about it. It is your sole responsibility to independently confirm its accuracy and completeness.

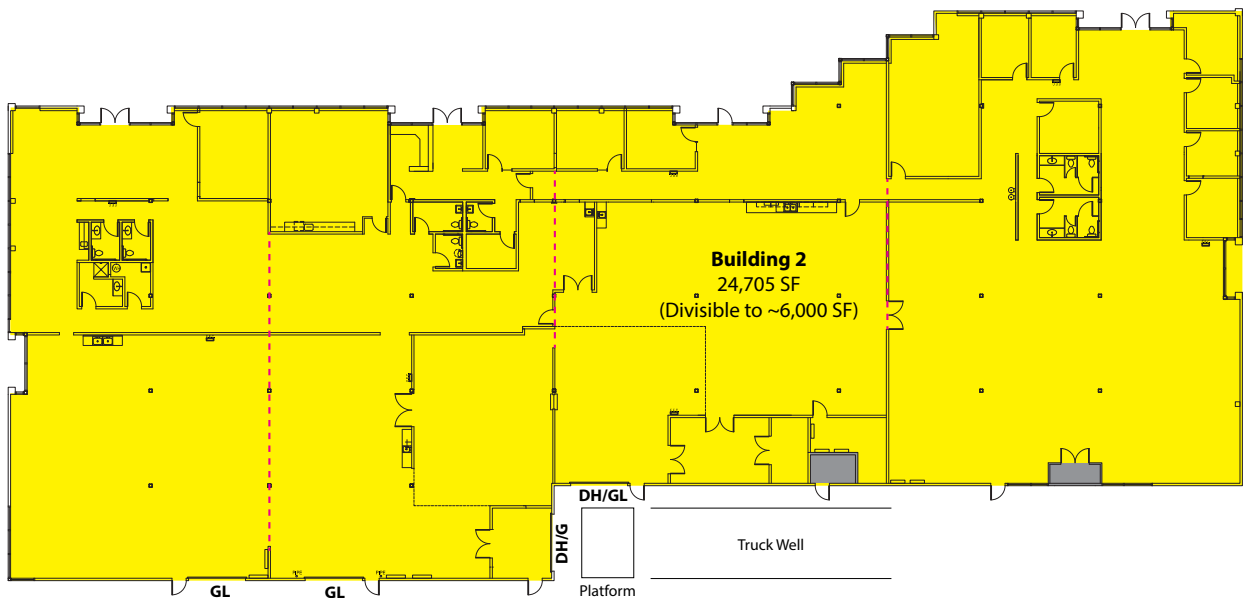
RH North Creek Business Center

11810-11824 North Creek Parkway N, Bothell, WA 98011

Building 1



Building 2



Rosen~Harbottle Commercial Real Estate | P.O. Box 5003 Bellevue, WA 98009-5003
phone: (425) 454-3030 fax: (425) 454-6705 | www.rosenharbottle.com

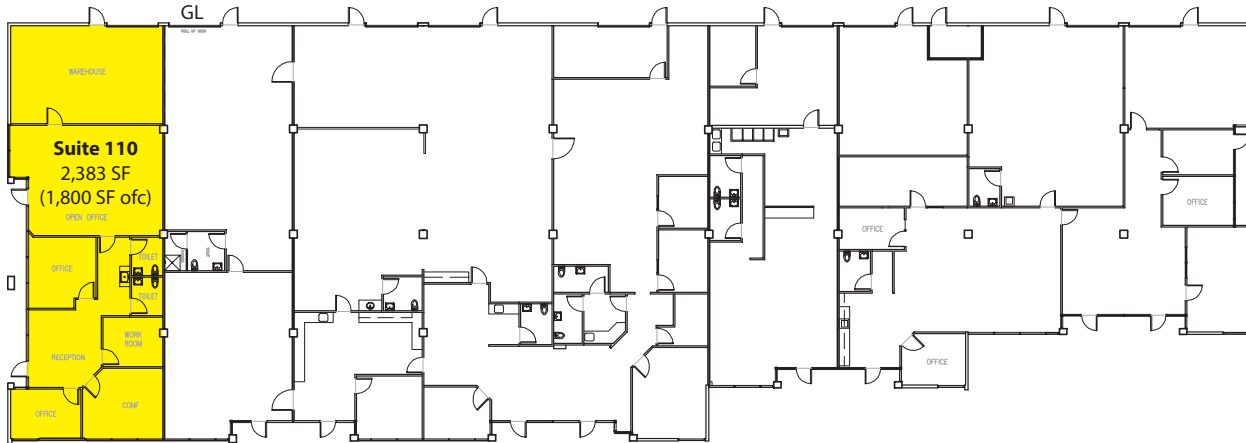
The information provided has been obtained from sources believed reliable. While we do not doubt its accuracy, we have not verified and make no guarantee, warranty or representation about it. It is your sole responsibility to independently confirm its accuracy and completeness.



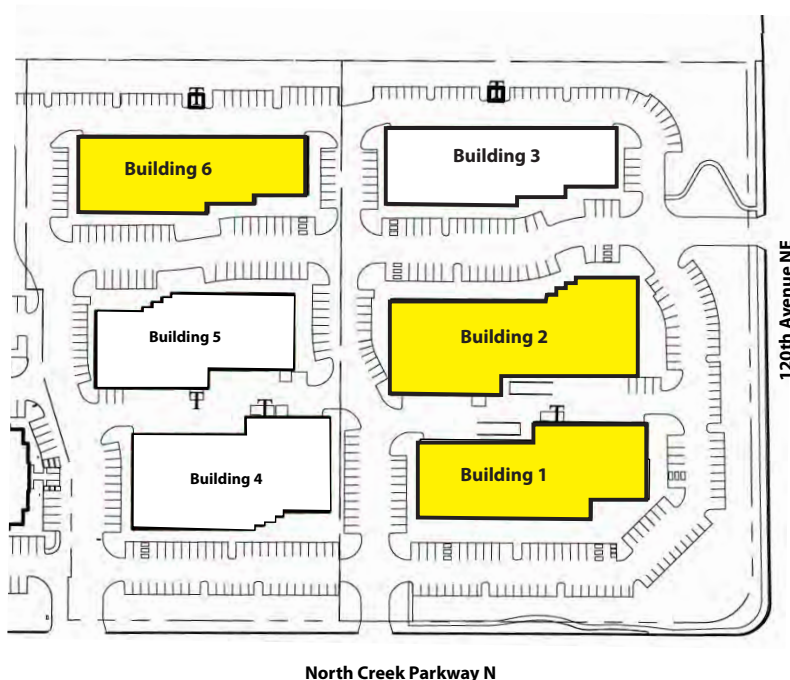
RH North Creek Business Center

11810-11824 North Creek Parkway N, Bothell, WA 98011

Building 6



Site Plan



Rosen~Harbottle Commercial Real Estate | P.O. Box 5003 Bellevue, WA 98009-5003
phone: (425) 454-3030 fax: (425) 454-6705 | www.rosenharbottle.com

The information provided has been obtained from sources believed reliable. While we do not doubt its accuracy, we have not verified and make no guarantee, warranty or representation about it. It is your sole responsibility to independently confirm its accuracy and completeness.

RH North Creek Business Center

11810-11824 North Creek Parkway N, Bothell, WA 98011



**RH North Creek
Business Center**

Corporate Neighbors

- | | | |
|----------------------------|-------------------------------|------------------------|
| 1. AT&T | 6. AT&T | 11. Talentwise |
| 2. General Dynamics | 7. United Healthcare Services | 12. Tetra Tech |
| 3. Valeant Pharmaceuticals | 8. Progressive, Banner Bank | 13. T-Mobile |
| 4. AMEC | 9. Vertafore | 14. Puget Sound Energy |
| 5. Google | 10. State Farm | 15. HUB International |

Rosen~Harbottle Commercial Real Estate | P.O. Box 5003 Bellevue, WA 98009-5003
phone: (425) 454-3030 fax: (425) 454-6705 | www.rosenharbottle.com

The information provided has been obtained from sources believed reliable. While we do not doubt its accuracy, we have not verified and make no guarantee, warranty or representation about it. It is your sole responsibility to independently confirm its accuracy and completeness.

