

NORTHCREEK BUSINESS PARK

17901 Bothell-Everett Highway, Bothell, WA 98012



RETAIL/OFFICE SPACE

1,062 SF Available

\$18.50/SF, NNN

FEATURES:

- Exposure to Bothell-Everett Highway
- Monument & Pylon Signage Available
- High-Image, Ample Glass
- Quality Concrete-Tilt, High-Tech Building
- Grade-Level Loading

ROSEN | HARBOTTLE
RH

For more information, contact:

**ROSEN~HARBOTTLE
COMMERCIAL REAL ESTATE**

Brian Stewart
(425) 289-2222
brians@rosenharbottle.com

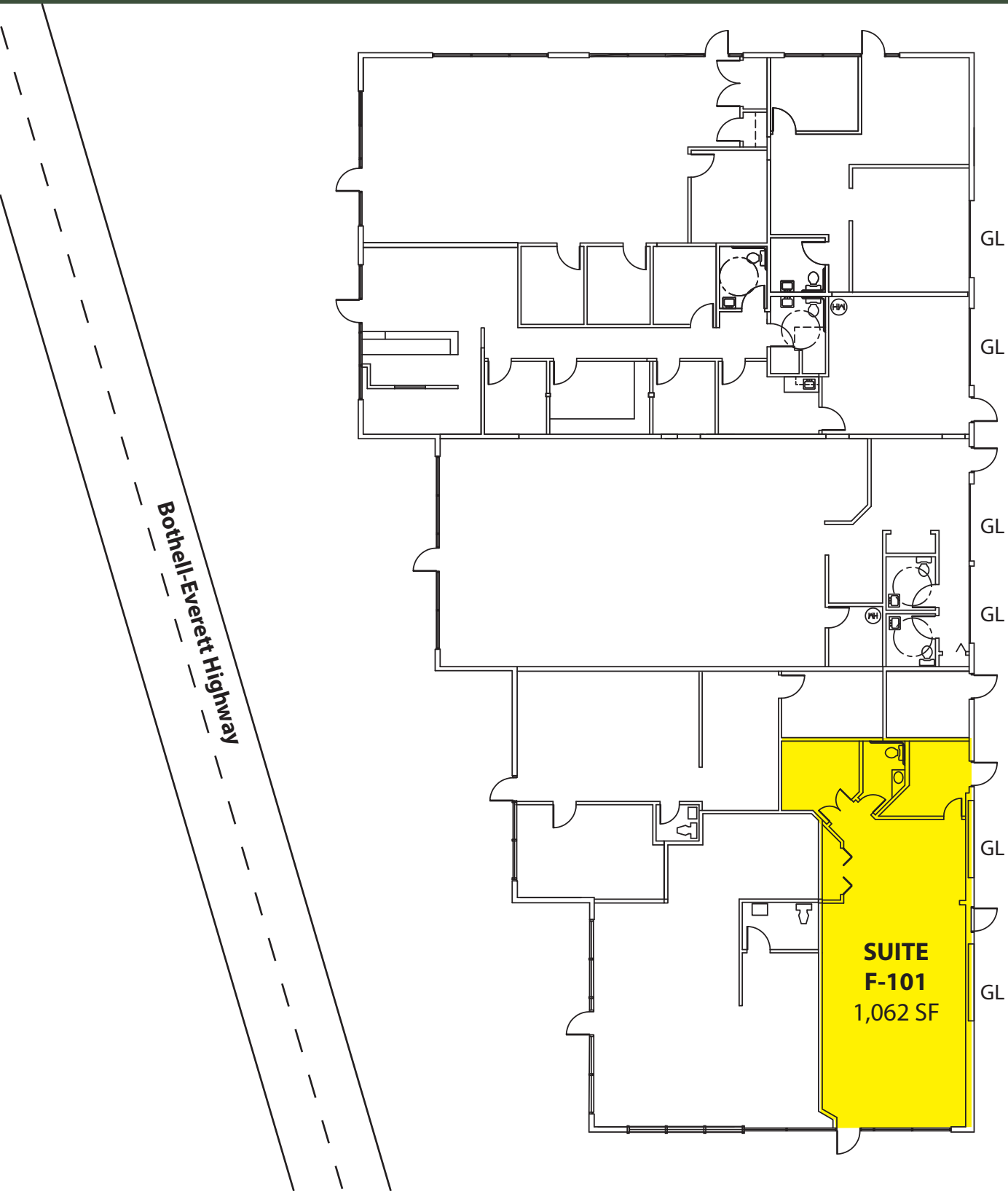
www.rosenharbottle.com

Rosen~Harbottle Commercial Real Estate | P.O. Box 5003 Bellevue, WA 98009-5003
phone: (425) 454-3030 fax: (425) 454-6705 | www.rosenharbottle.com

The information provided has been obtained from sources believed reliable. While we do not doubt its accuracy, we have not verified and make no guarantee, warranty or representation about it. It is your sole responsibility to independently confirm its accuracy and completeness.

NORTHCREEK BUSINESS PARK

17901 Bothell-Everett Highway, Bothell, WA 98012



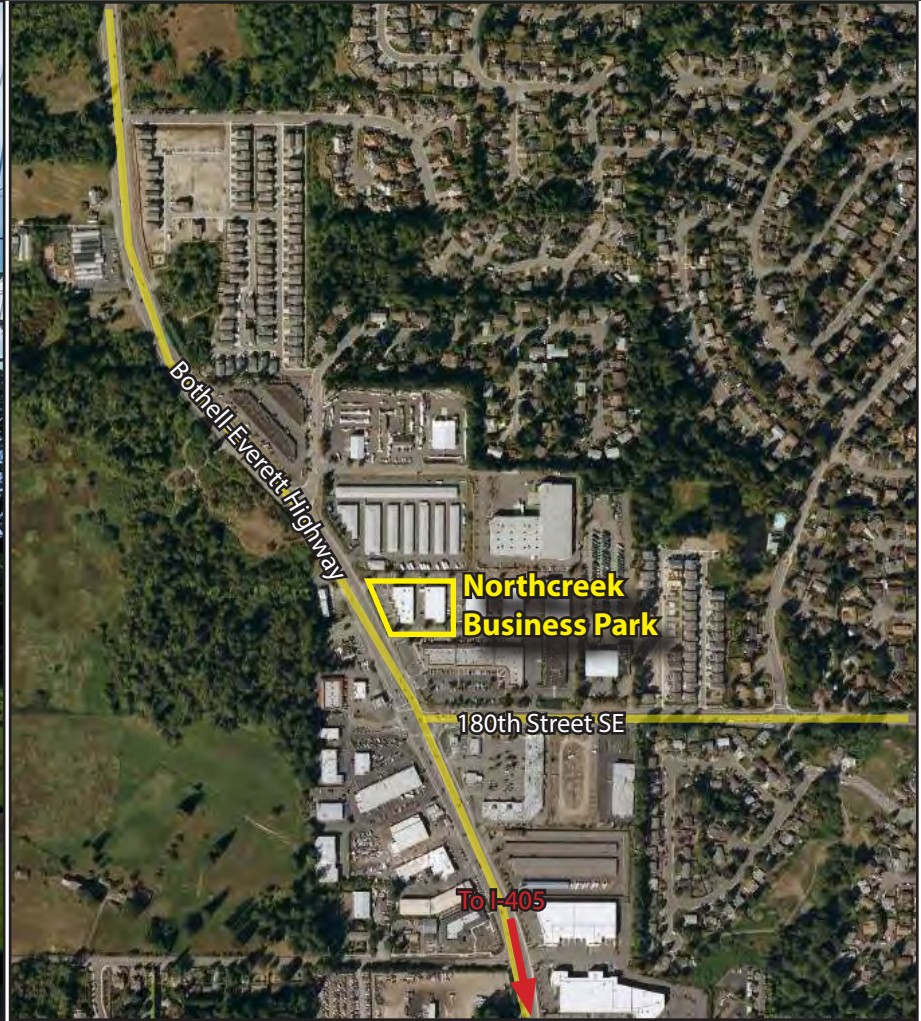
Rosen~Harbottle Commercial Real Estate | P.O. Box 5003 Bellevue, WA 98009-5003
phone: (425) 454-3030 fax: (425) 454-6705 | www.rosenharbottle.com

The information provided has been obtained from sources believed reliable. While we do not doubt its accuracy, we have not verified and make no guarantee, warranty or representation about it. It is your sole responsibility to independently confirm its accuracy and completeness.



NORTHCREEK BUSINESS PARK

17901 Bothell-Everett Highway, Bothell, WA 98012



For more information, contact:

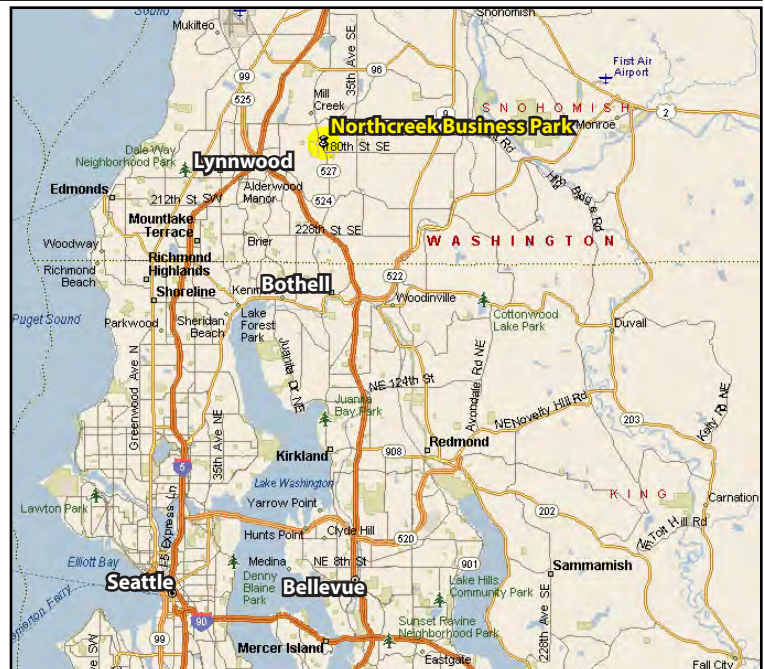
**ROSEN~HARBOTTLE
COMMERCIAL REAL ESTATE**

Brian Stewart

(425) 289-2222

brians@rosenharbottle.com

www.rosenharbottle.com



Rosen~Harbottle Commercial Real Estate | P.O. Box 5003 Bellevue, WA 98009-5003

phone: (425) 454-3030 fax: (425) 454-6705 | www.rosenharbottle.com

The information provided has been obtained from sources believed reliable. While we do not doubt its accuracy, we have not verified and make no guarantee, warranty or representation about it. It is your sole responsibility to independently confirm its accuracy and completeness.