

# BONNEY LAKE VILLAGE SHOPPING CENTER

21107-21291 Highway 410, Bonney Lake, WA 98391

**HIGH-TRAFFIC  
LOCATION**



## Safeway Anchored Retail Center

**600 SF - 10,951 SF Available**

**\$11.00/SF - \$24.00/SF, NNN**

### **FEATURES:**

- Former Church Space Available: 5,817 SF - 10,951 SF
- Spaces Available Near Safeway & Goodwill
- Frontage on Highway 410
- Neighboring Anchors: New Walmart, Fred Meyer, Lowe's & Home Depot
- Tenants Include Ben Franklin, Radio Shack, Goodwill, Burger King & Taco Bell
- 44,000+ Cars per Day on Highway 410



For more information, contact:

**ROSEN~HARBOTTLE  
COMMERCIAL REAL ESTATE**

**Jack Rosen**

(425) 289-2221

jack@rosenharbottle.com

**Brian Stewart**

(425) 289-2222

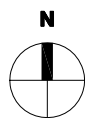
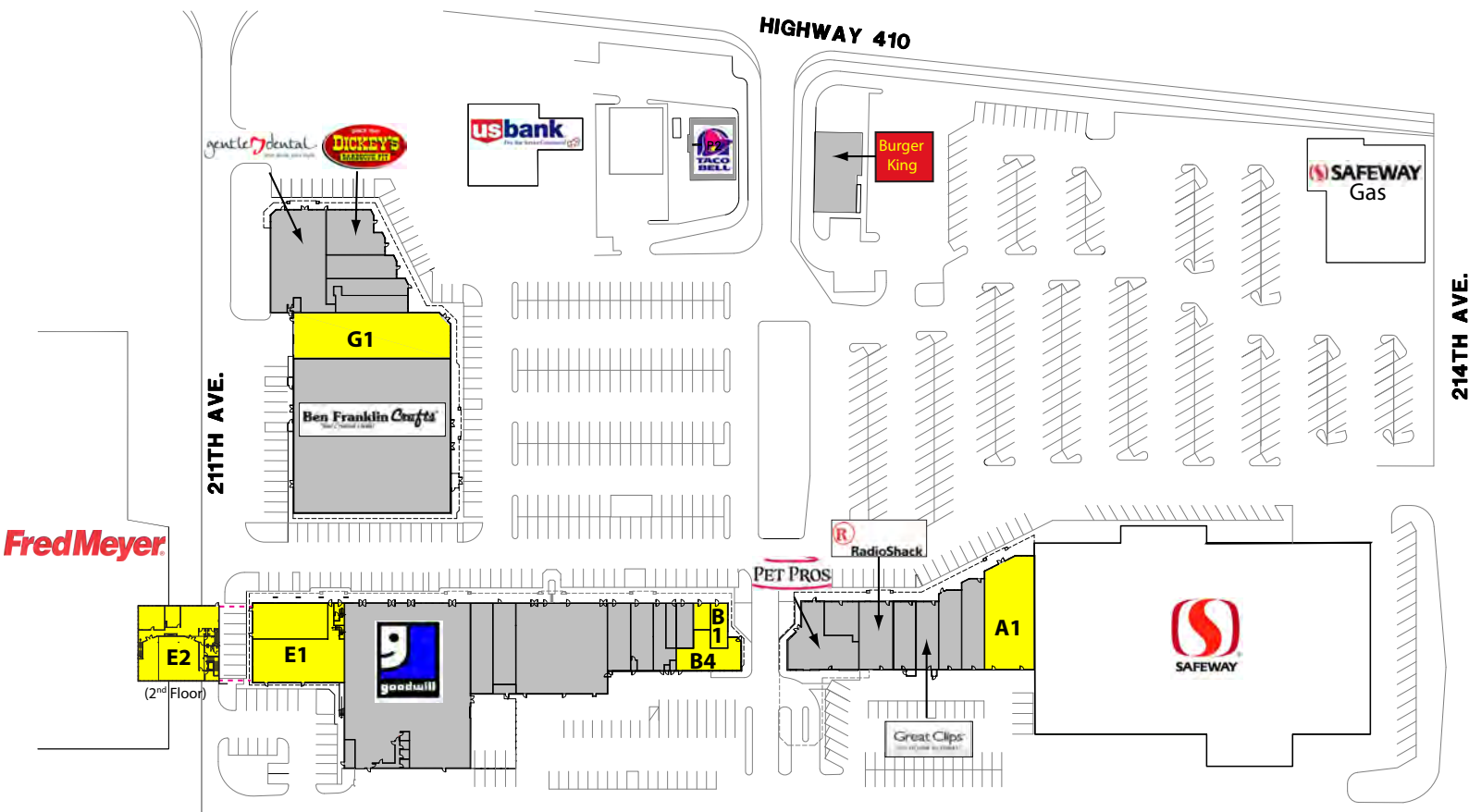
brians@rosenharbottle.com

Rosen~Harbottle Commercial Real Estate | P.O. Box 5003 Bellevue, WA 98009-5003  
phone: (425) 454-3030 fax: (425) 454-6705 | [www.rosenharbottle.com](http://www.rosenharbottle.com)

The information provided has been obtained from sources believed reliable. While we do not doubt its accuracy, we have not verified and make no guarantee, warranty or representation about it. It is your sole responsibility to independently confirm its accuracy and completeness.

# BONNEY LAKE VILLAGE SHOPPING CENTER

21107-21291 Highway 410, Bonney Lake, WA 98391



SUITE	SQUARE FEET	RATE
A-1	4,437 SF	\$24.00/SF
B-1/B-4	600 SF - 2,508 SF	\$24.00/SF
B-4	1,568 SF	\$15.00/SF
E-1/E-2	5,134 SF - 10,951 SF	\$11.00/SF
E-2	5,817 SF	\$16.00/SF
G-1	5,516 SF	\$24.00/SF

For more information, contact:

**ROSEN~HARBOTTLE  
COMMERCIAL REAL ESTATE**

**Jack Rosen**  
(425) 289-2221  
jack@rosenharbottle.com

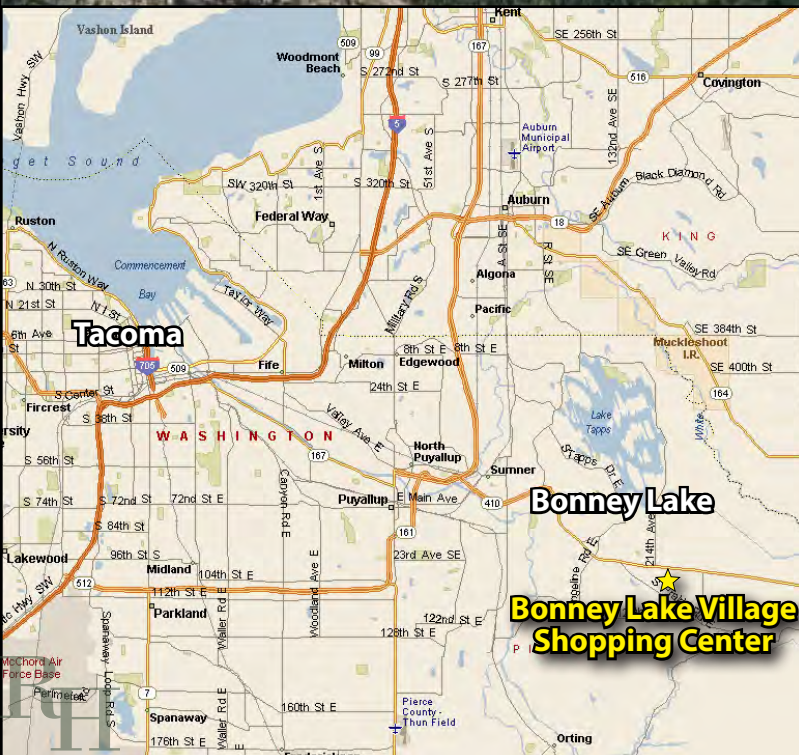
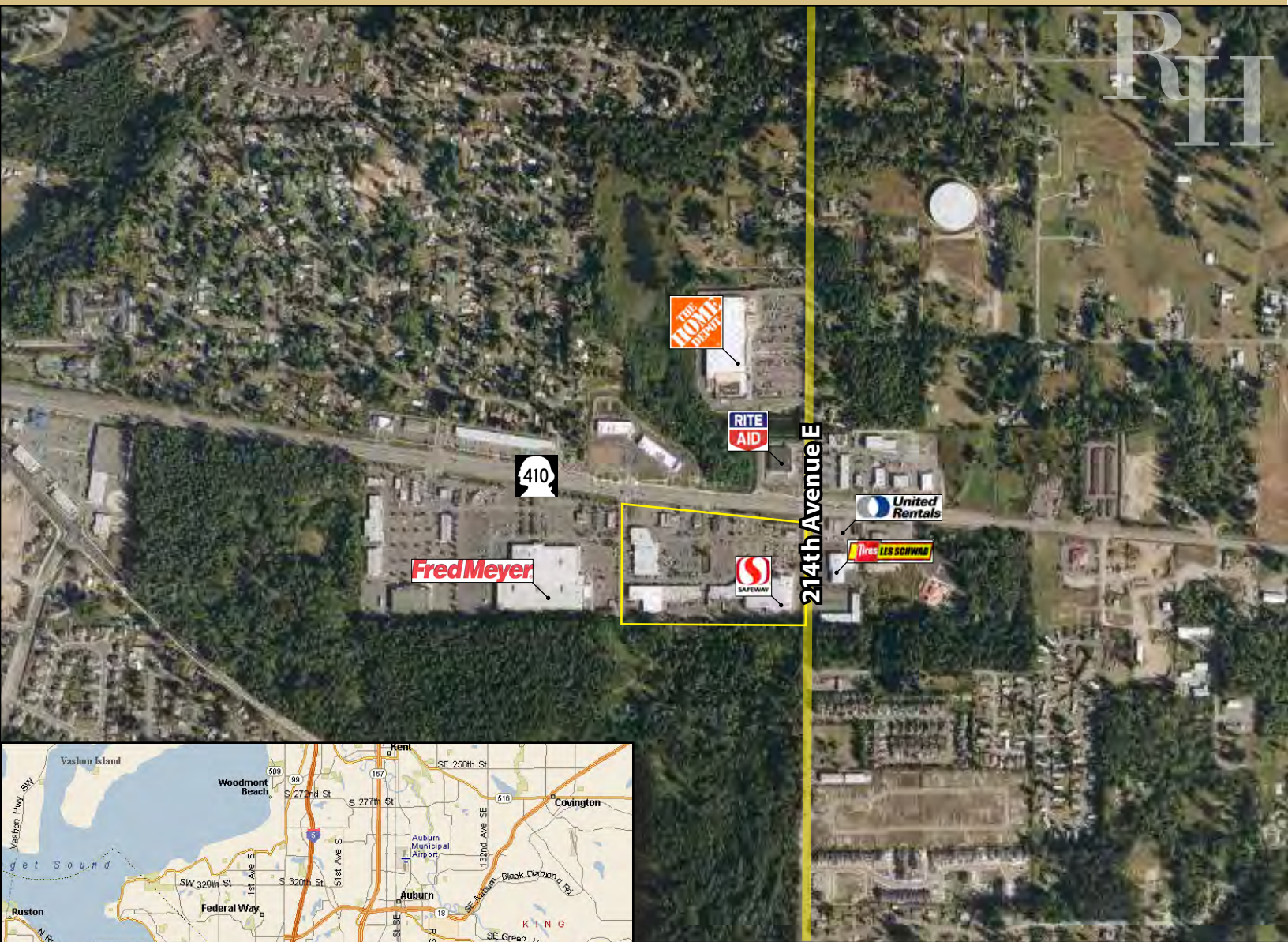
**Brian Stewart**  
(425) 289-2222  
brians@rosenharbottle.com

Rosen~Harbottle Commercial Real Estate | P.O. Box 5003 Bellevue, WA 98009-5003  
phone: (425) 454-3030 fax: (425) 454-6705 | www.rosenharbottle.com

The information provided has been obtained from sources believed reliable. While we do not doubt its accuracy, we have not verified and make no guarantee, warranty or representation about it. It is your sole responsibility to independently confirm its accuracy and completeness.

# BONNEY LAKE VILLAGE SHOPPING CENTER

21107-21291 Highway 410, Bonney Lake, WA 98391



## Rosen | Harbottle

Commercial Real Estate

P.O. Box 5003, Bellevue, WA 98009-5003

(425) 454-3030 Phone (425) 454-6705 Fax

[www.rosenharbottle.com](http://www.rosenharbottle.com)

Rosen~Harbottle Commercial Real Estate | P.O. Box 5003 Bellevue, WA 98009-5003  
phone: (425) 454-3030 fax: (425) 454-6705 | [www.rosenharbottle.com](http://www.rosenharbottle.com)

The information provided has been obtained from sources believed reliable. While we do not doubt its accuracy, we have not verified and make no guarantee, warranty or representation about it. It is your sole responsibility to independently confirm its accuracy and completeness.