

OFFICE/RETAIL
LEASE



GATEWAY POINTE BUSINESS PARK

2601 - 2715 Jahn Ave NW | Gig Harbor, WA

Caleb Farnworth, CCIM

425.289.2235

calebf@rosenharbottle.com

Mike Armanious, CCIM

253.988.6115

marmanious@kw.com

425.454.3030
rosenharbottle.com

PO Box 5003
Bellevue, WA 98009 - 5003





LOW PRICES IN GIG HARBOR

774 SF - 10,391 SF Available

IDEAL USES:

- Cafe/Restaurant
- Office/Medical
- Showroom
- Fitness Center/Recreation Uses
- Education / Training
- Boutique Store/Salon

FEATURES:

- On-Site Amenities: Exercise Facility and Daycare
- High Visibility to 70,000+ Cars/Day on Highway 16
- View of Narrows Bridge & Olympic Mountains
- 4 Stalls / 1,000 SF Parking Ratio
- Vaulted Ceilings with Skylights
- Heating and Air Conditioning Throughout

The information provided herein has been obtained from sources believed to be reliable, but no representation or warranty, express or implied, is made with respect to the accuracy or completeness of any such information. Each prospective buyer or tenant should independently investigate, evaluate and verify all information provided herein and any other matters deemed material. Please consult your attorney, tax advisor or other professional advisor. The terms of sale or lease set forth herein are subject to change or withdrawal at any time and without notice.

SUITE DETAILS

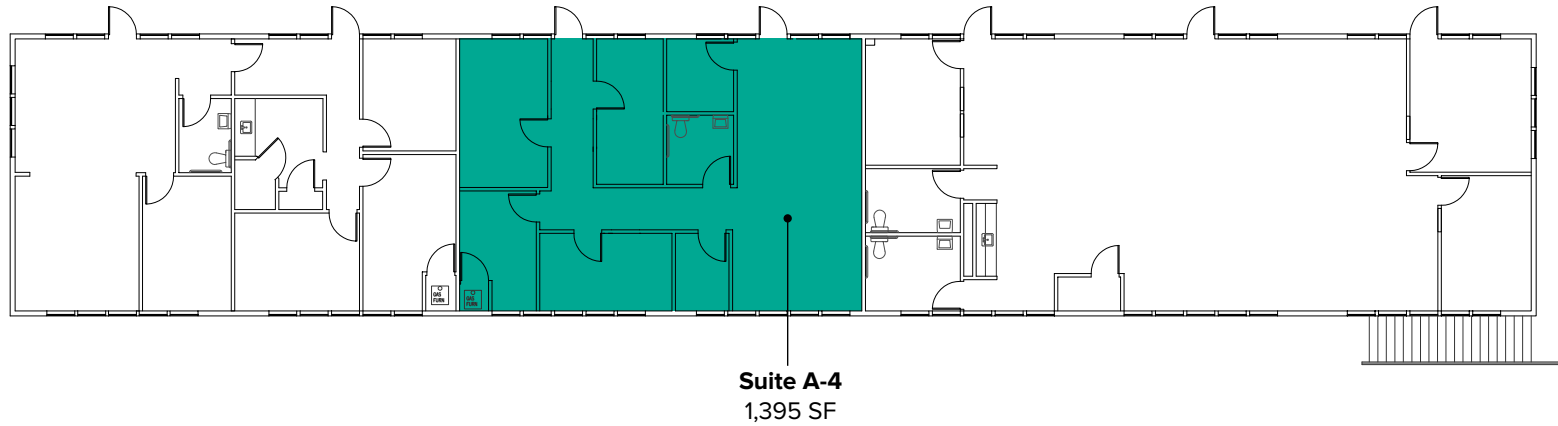
Suite	Square Feet	Rent
A-4	1,395 SF	\$2,151/Month
B-4	1,061 SF	\$1,636/Month
C-8	776 SF	\$1,293/Month
E-3	774 SF	\$1,395/Month
F-10	1,756 SF	\$2,415/Month
G1-6	5,268 SF - 10,391 SF	\$8,122/Month
G7-12	5,123 SF - 10,391 SF	\$7,044/Month



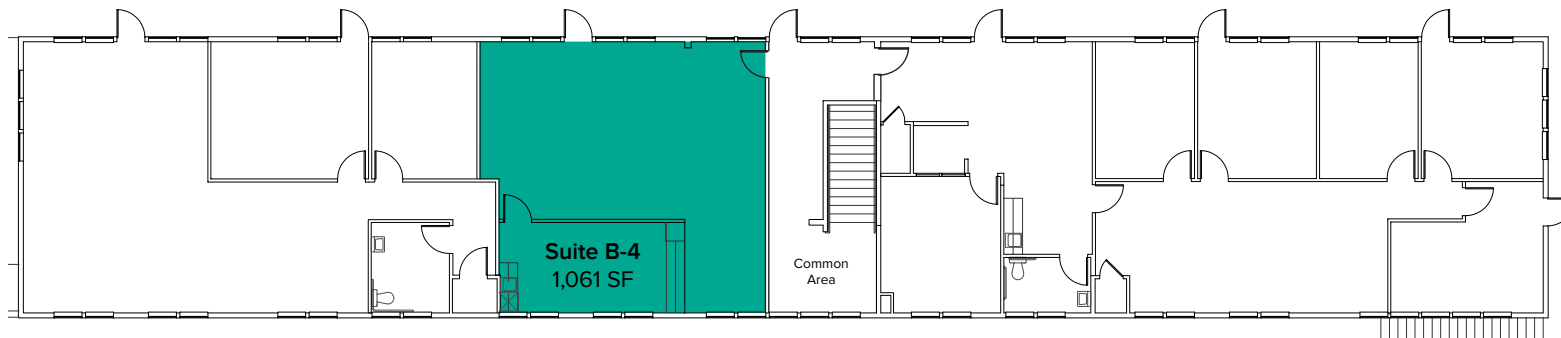
The information provided herein has been obtained from sources believed to be reliable, but no representation or warranty, express or implied, is made with respect to the accuracy or completeness of any such information. Each prospective buyer or tenant should independently investigate, evaluate and verify all information provided herein and any other matters deemed material. Please consult your attorney, tax advisor or other professional advisor. The terms of sale or lease set forth herein are subject to change or withdrawal at any time and without notice.

FLOOR PLAN

Suite	Square Feet	Rent	Notes
A-4	1,395 SF	\$2,151/Month	Second floor suite includes private offices, open work area, and restroom. Available Now.



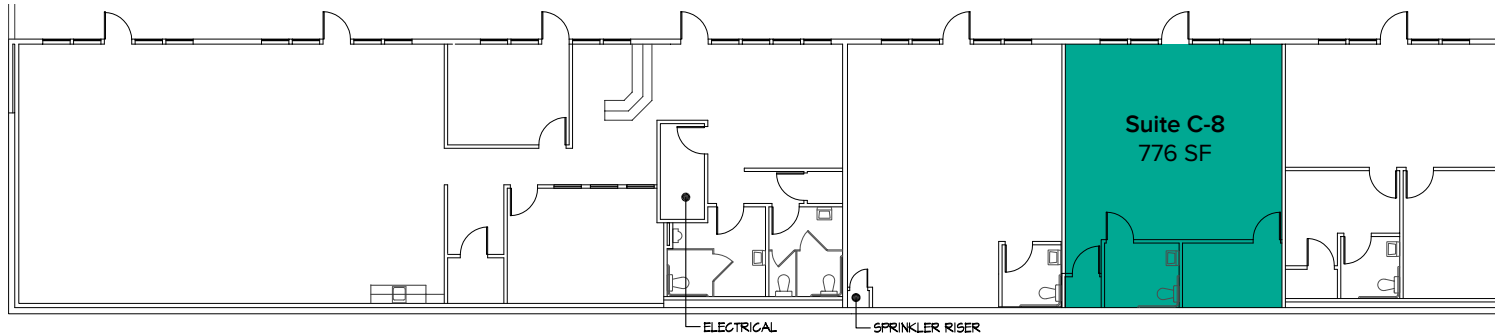
Suite	Square Feet	Rent	Notes
B-4	1,061 SF	\$1,636/Month	Second floor suite includes open work area and break room with kitchenette. Available Now.



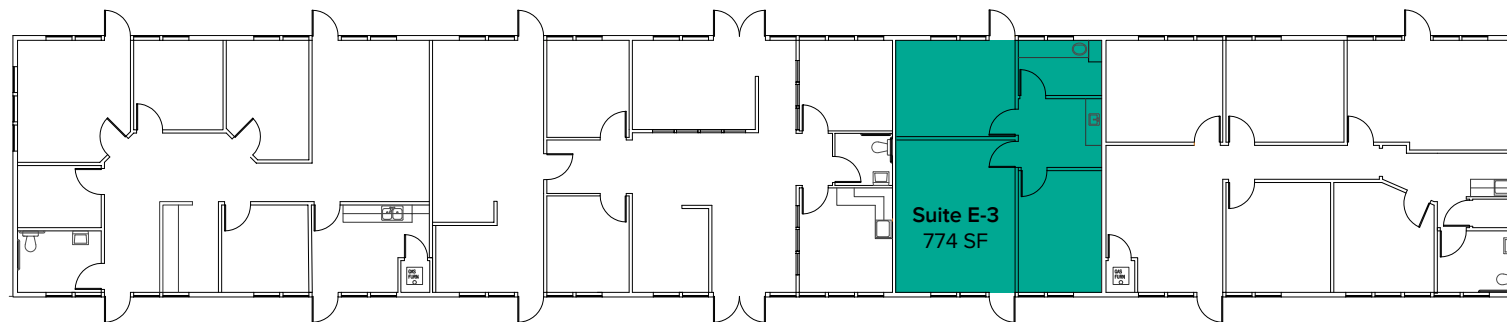
The information provided herein has been obtained from sources believed to be reliable, but no representation or warranty, express or implied, is made with respect to the accuracy or completeness of any such information. Each prospective buyer or tenant should independently investigate, evaluate and verify all information provided herein and any other matters deemed material. Please consult your attorney, tax advisor or other professional advisor. The terms of sale or lease set forth herein are subject to change or withdrawal at any time and without notice.

FLOOR PLAN

Suite	Square Feet	Rate	Notes
C-8	776 SF	\$1,293/Month	First floor suite with private office and restroom. Available for Sublease now.



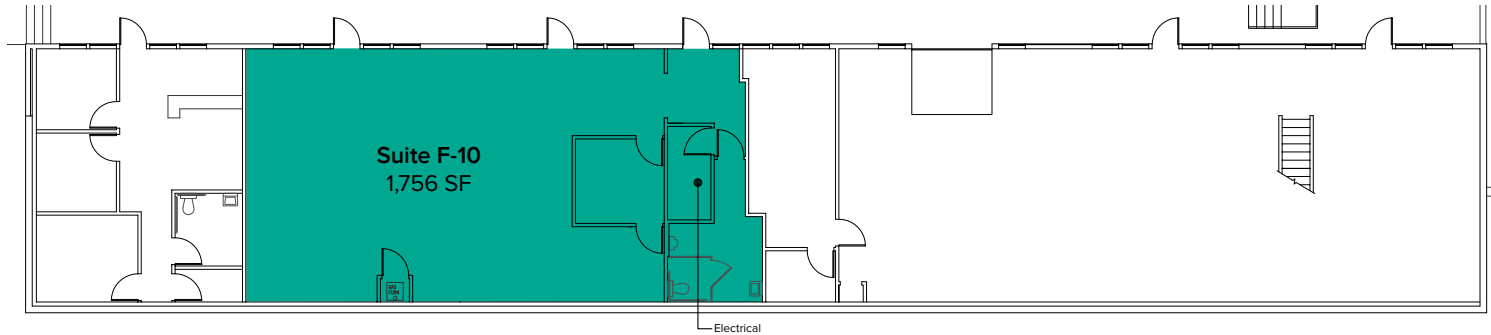
Suite	Square Feet	Rate	Notes
E-3	774 SF	\$1,395/Month	Second floor suite with private offices, kitchenette, and restroom. Available for Sublease now.



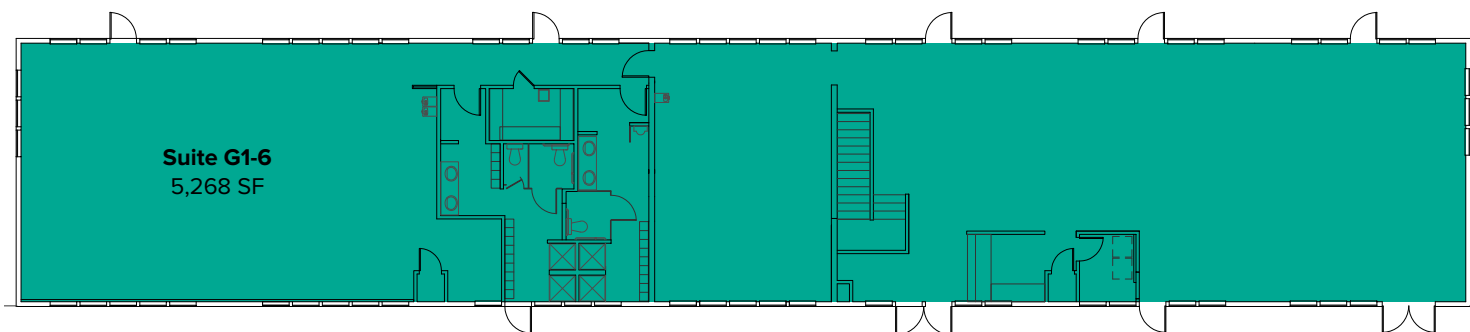
The information provided herein has been obtained from sources believed to be reliable, but no representation or warranty, express or implied, is made with respect to the accuracy or completeness of any such information. Each prospective buyer or tenant should independently investigate, evaluate and verify all information provided herein and any other matters deemed material. Please consult your attorney, tax advisor or other professional advisor. The terms of sale or lease set forth herein are subject to change or withdrawal at any time and without notice.

FLOOR PLAN

Suite	Square Feet	Rate	Notes
F-10	1,756 SF	\$2,415/Month	First floor retail/office space with 1 private office, 1 restroom, and open work area. Available now.



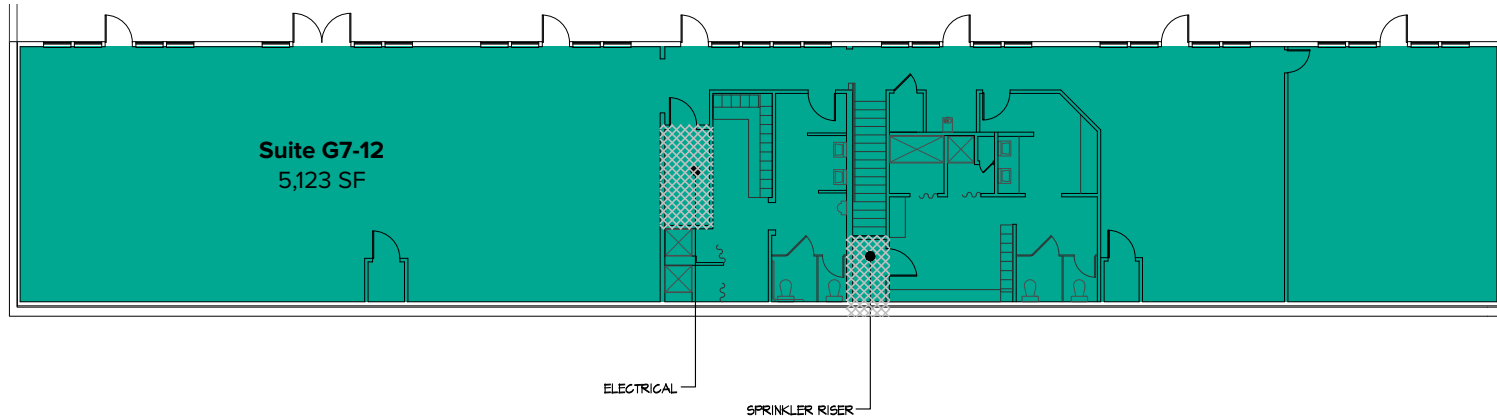
Suite	Square Feet	Rate	Notes
G1-6	5,268 SF - 10,391 SF	\$8,122/Month	Full building, former gym space. Second floor includes open area, locker rooms, and restrooms. Available now.



The information provided herein has been obtained from sources believed to be reliable, but no representation or warranty, express or implied, is made with respect to the accuracy or completeness of any such information. Each prospective buyer or tenant should independently investigate, evaluate and verify all information provided herein and any other matters deemed material. Please consult your attorney, tax advisor or other professional advisor. The terms of sale or lease set forth herein are subject to change or withdrawal at any time and without notice.

FLOOR PLAN

Suite	Square Feet	Rate	Notes
G7-12	5,123 SF - 10,391 SF	\$7,044/Month	Full building, former gym space. First floor includes open area, locker rooms, showers, restrooms, and a large private room. Available now.



The information provided herein has been obtained from sources believed to be reliable, but no representation or warranty, express or implied, is made with respect to the accuracy or completeness of any such information. Each prospective buyer or tenant should independently investigate, evaluate and verify all information provided herein and any other matters deemed material. Please consult your attorney, tax advisor or other professional advisor. The terms of sale or lease set forth herein are subject to change or withdrawal at any time and without notice.

LOCATION MAP



NEARBY AMENITIES:

Safeway

Kohl's

Homegoods

Starbucks

Panera Bread

Applebee's Grill & Bar

QFC

AT&T

Lunchbox Laboratory

Marshalls

Michaels

Galaxy Theater

DRIVE TIME:

Uptown Gig Harbor: 4 Minutes

Downtown Gig Harbor: 8 Minutes

Downtown Tacoma: 15 Minutes