

MILITARY ROAD S BUILDING

8300 MILITARY ROAD S, SEATTLE, WA 98108



SOUTH SEATTLE FLEX/TECH SPACE

8,778 SF Available

\$0.85 / SF, NNN

FEATURES:

- 4,708 SF Easily Converted to Warehouse
- Visibility to I-5
- Rare Location
- Double-Man Door Loading
- 3-Phase Power
- Concrete Tilt-Up Construction

For more information, contact:

ROSEN~HARBOTTLE
COMMERCIAL REAL ESTATE

Jack Rosen

(425) 289-2221

jack@rosenharbottle.com

www.rosenharbottle.com

Rosen~Harbottle Commercial Real Estate | P.O. Box 5003 Bellevue, WA 98009-5003
phone: (425) 454-3030 fax: (425) 454-6705 | www.rosenharbottle.com

The information provided has been obtained from sources believed reliable. While we do not doubt its accuracy, we have not verified and make no guarantee, warranty or representation about it. It is your sole responsibility to independently confirm its accuracy and completeness.

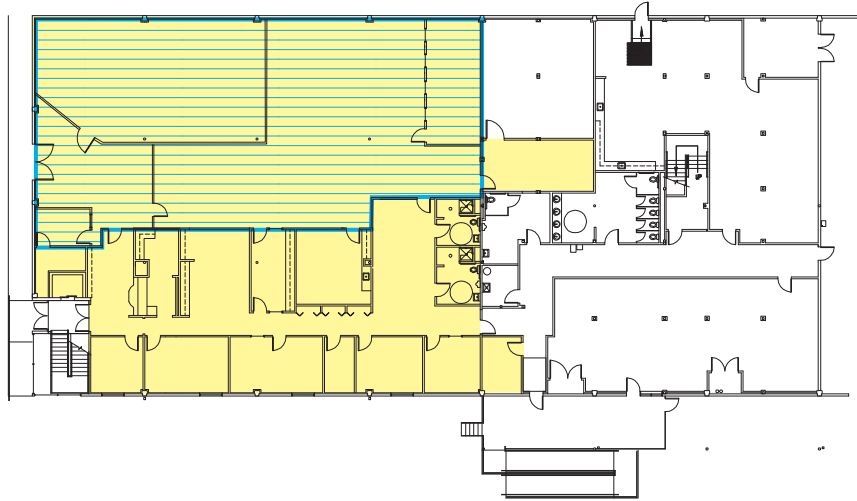
MILITARY ROAD S BUILDING

8300 MILITARY ROAD S, SEATTLE, WA 98108

FLOOR PLAN

SUITE 150 - 8,778 SF Office Available

 4,708 SF can be converted to warehouse

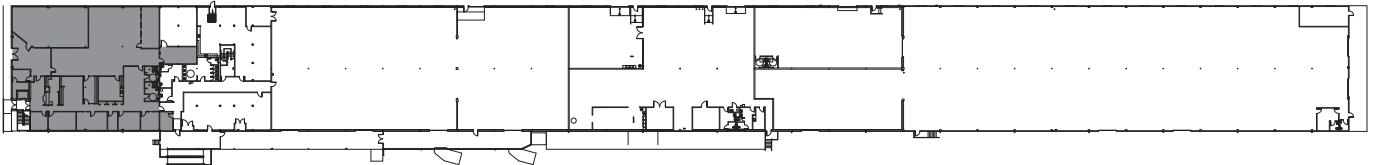


FLOOR PLAN

NOT TO SCALE



SITE PLAN

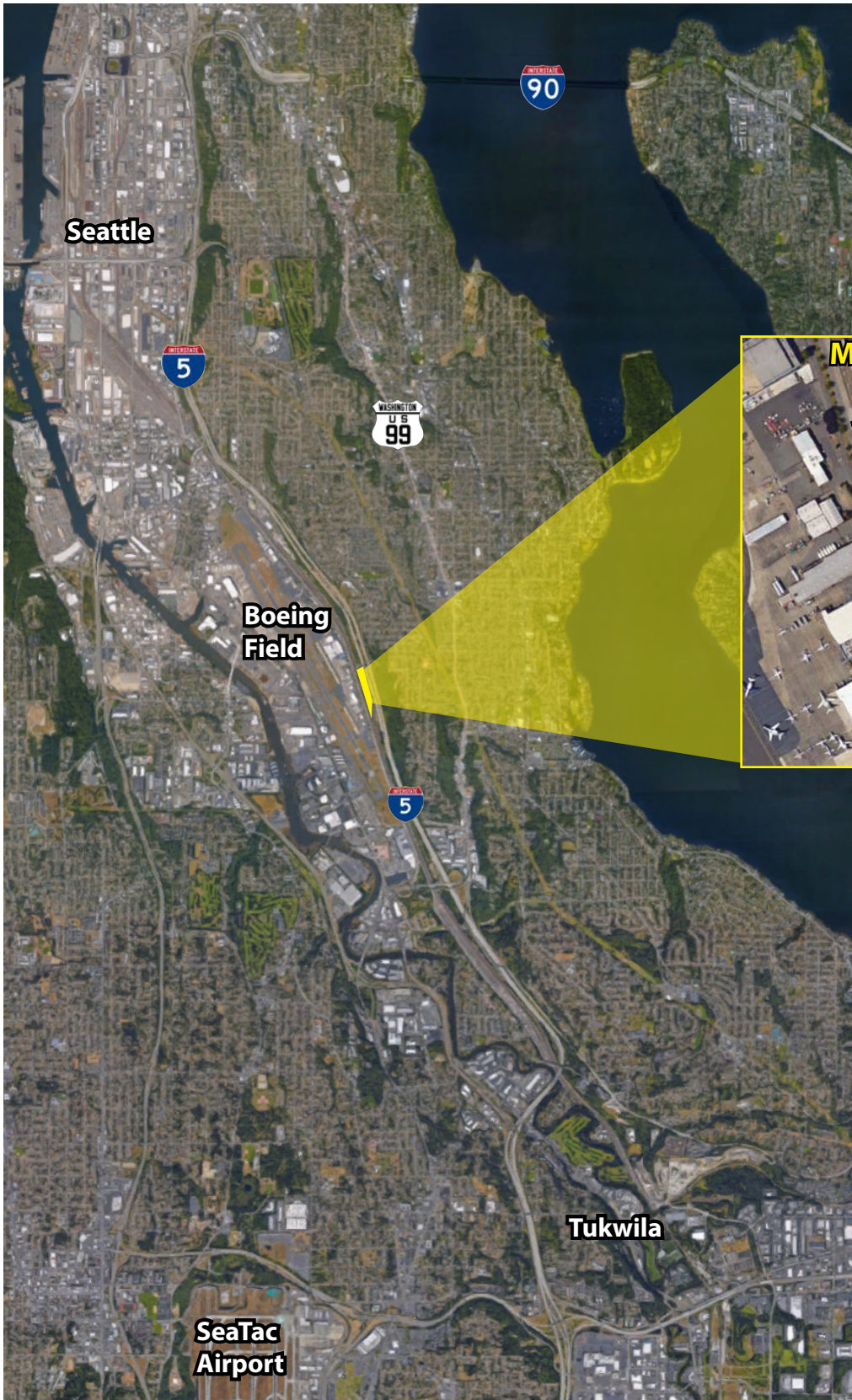


Rosen~Harbottle Commercial Real Estate | P.O. Box 5003 Bellevue, WA 98009-5003
phone: (425) 454-3030 fax: (425) 454-6705 | www.rosenharbottle.com

The information provided has been obtained from sources believed reliable. While we do not doubt its accuracy, we have not verified and make no guarantee, warranty or representation about it. It is your sole responsibility to independently confirm its accuracy and completeness.

MILITARY ROAD S BUILDING

8300 MILITARY ROAD S, SEATTLE, WA 98108



Rosen~Harbottle Commercial Real Estate | P.O. Box 5003 Bellevue, WA 98009-5003
phone: (425) 454-3030 fax: (425) 454-6705 | www.rosenharbottle.com

The information provided has been obtained from sources believed reliable. While we do not doubt its accuracy, we have not verified and make no guarantee, warranty or representation about it. It is your sole responsibility to independently confirm its accuracy and completeness.