

NEW REDUCED RATE
\$0.55/SF, NNN



MILITARY ROAD S BUILDING

8300 Military Road S | Seattle, WA

Jack Rosen

425.289.2221

jack@rosenharbottle.com

425.454.3030
rosenharbottle.com

PO Box 5003
Bellevue, WA 98009 - 5003





**ONE OF THE LOWEST RATES
IN SOUTH SEATTLE:
\$0.55/SF, NNN**

**OFFICE/WAREHOUSE/FLEX SPACE
5,177 SF - 8,778 SF Available**



FEATURES:

- Air Conditioning Throughout
- Visibility to I-5
- 3-Phase Power
- Grade-Level Loading
- Good Parking
- Storage Available



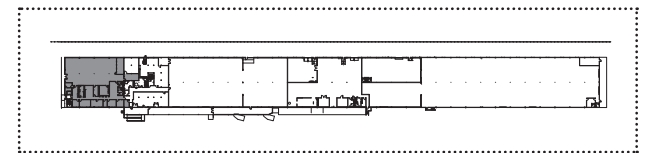
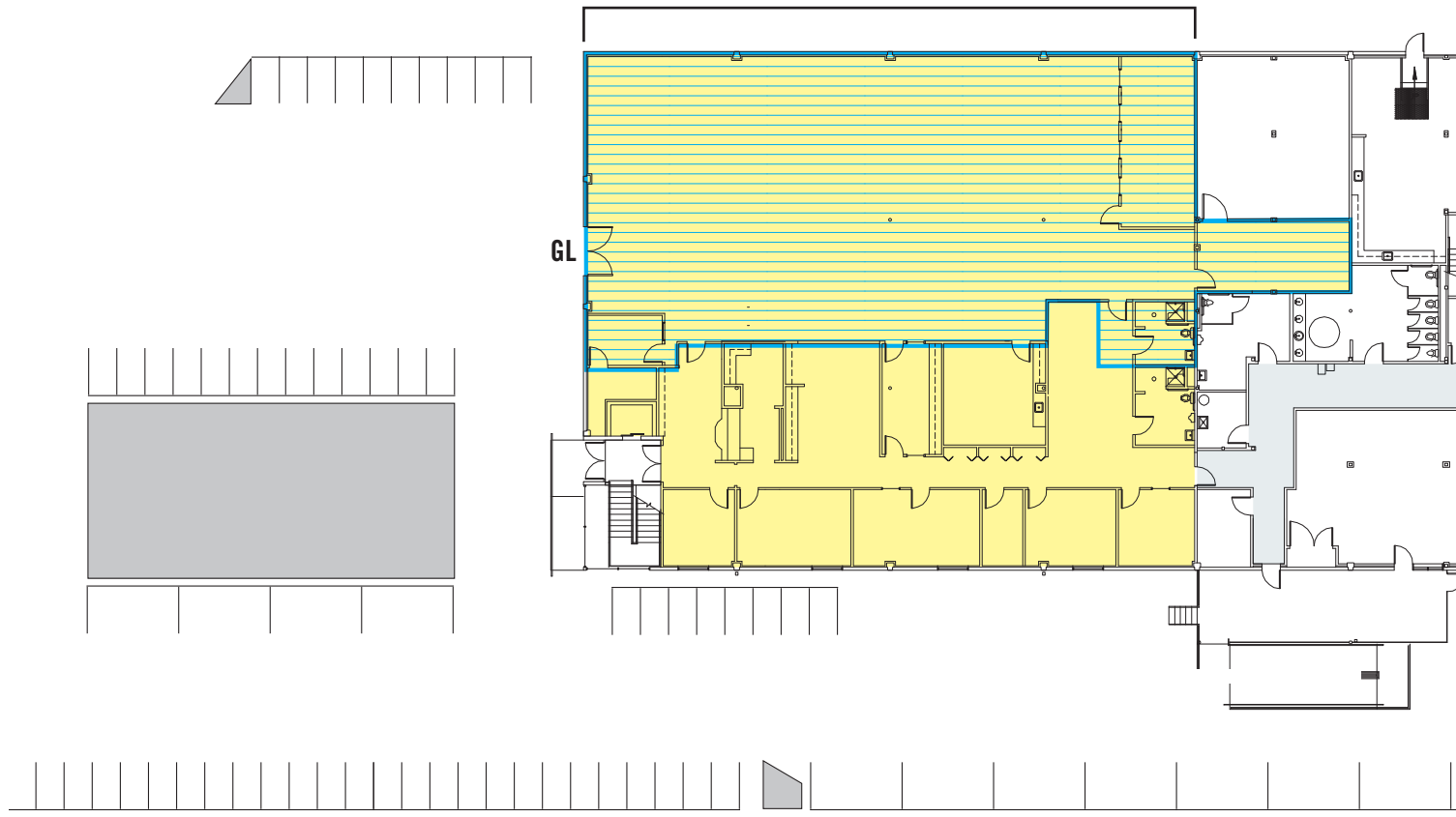
IDEAL USES

- Server Farm
- Tech Startups
- Data Center
- Light Industrial

SITE PLAN

SUITE 150 - 8,778 SF Office Available

 5,177 SF Warehouse



LOCATION MAP



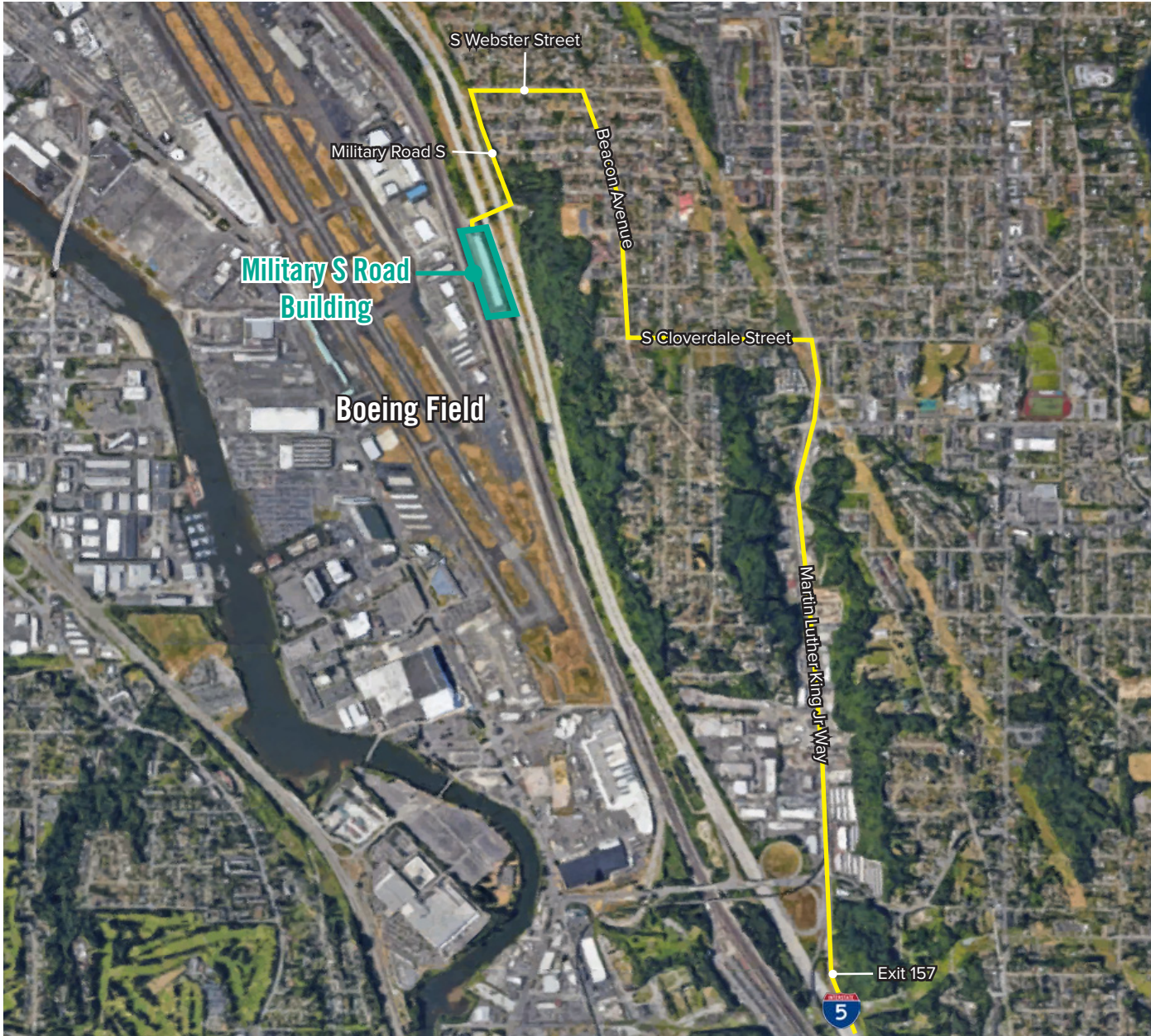
LOCATION MAP



DIRECTION FROM I-5 NORTH

- Take exit 161 for Albro Place toward Swift Ave
- Left on S Albro Place
- Right on Swift Ave S
- Continue onto S Myrtle Street
- Right onto Beacon Ave S
- Right onto Webster St
- Continue onto 29th Ave S
- Continue onto Military Road S
- Military Road S Building is located on the Left

LOCATION MAP



DIRECTION FROM I-5 SOUTH

- Take exit 157 for Martin Luther King Jr Way S
- Left onto S Cloverdale Street
- Right onto Beacon Avenue S
- Left onto S Webster Road
- Continue onto Military Road S
- Continue onto S Rose Street
- Military Road S Building is located on the Left