

HILLSIDE PLAZA SHOPPING CENTER

2000 - 2222 S 314th Street, Federal Way, WA 98003



FLEXIBLE SPACE CONFIGURATIONS!

749 SF* - 4,865 SF Available

\$18.50/SF, NNN

9,824 SF - 14,645 SF Available

\$12.50/SF, NNN

FEATURES:

- Available Space Can Accommodate Most Size Requirements
- Blocks Away from The Commons, I-5, Hwy 99 & Transit Center
- Directly Adjacent to Performing Arts & Events Center - Now Open
- Great Tenant Mix: Gene Juarez, CSL Plasma, Cortiva Institute, AAA, Nail Salon & Beauty Salon
- Densely Populated Surrounding Neighborhoods

*Suite 2152 (749 SF) will be available on 5/1/2019

Grant Rubenstein

(425) 289-2220

grant@rosenharbottle.com

Connor Feuerberg

(425) 279-7943

connor@rosenharbottle.com

RH | ROSEN
HARBOTTLE
COMMERCIAL REAL ESTATE



SOUTH 312TH ST.

20TH AVE SOUTH

23RD AVE SOUTH

2014
1,623 SF

2004
4,865 SF

14,645 SF (\$12.50/SF, NNN)

2122
4,821 SF

2130
9,824 SF

2152
749 SF

2150
2,245 SF

2154
1,500 SF

CSL Plasma
Good for You. Great for Life.

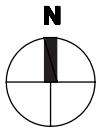
Contiguous: 4,494 SF

GENE JUAREZ
BARBER & BEAR

SOUTH 314TH ST.

**Federal Way Performing Arts
and Events Center
- NOW Open -**

**Federal Way
Transit Center**



Retail Trade Map



The information provided has been obtained from sources believed reliable. While we do not doubt its accuracy, we have not verified and make no guarantee, warranty or representation about it. It is your sole responsibility to independently confirm its accuracy and completeness.