

OFFICE
LEASE



LYNNWOOD EAST BUSINESS PARK

2031 196th Street SW | Lynnwood, WA

Caleb Farnworth, CCIM

425.289.2235

calebf@rosenharbottle.com

425.454.3030
rosenharbottle.com

PO Box 5003
Bellevue, WA 98009 - 5003





OFFICE SPACE NEAR ALDERWOOD MALL

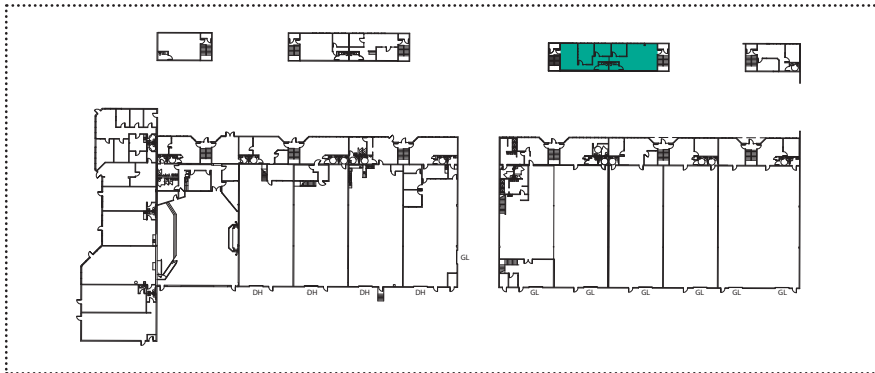
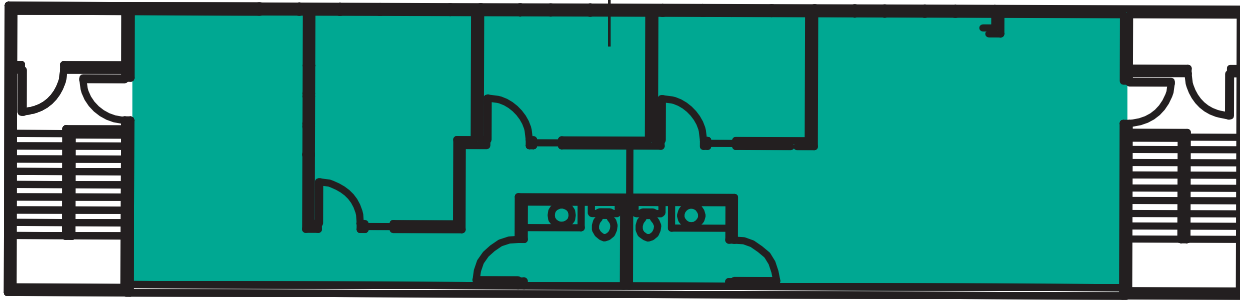
\$19.00/SF Modified Gross
1,635 SF Available

FEATURES:

- Available 7/1/2019
- Second Floor Suite with Natural Light
- Easy Ingress/Egress
- Abundant Parking
- Positive Tenant Mix
- Immediate Access to I-5, I-405, and SR-525

SECOND LEVEL FLOOR PLAN

Suite B201
1,635 SF



LOCATION MAP

