

FOR  
LEASE



# FORUM BUILDING

640 NW Gilman Blvd | Issaquah, WA, 98027

**Brian Stewart**

425.289.2222

brians@rosenharbottle.com

425.454.3030  
rosenharbottle.com

PO Box 5003  
Bellevue, WA 98009 - 5003





# OFFICE & MEDICAL BUILDING

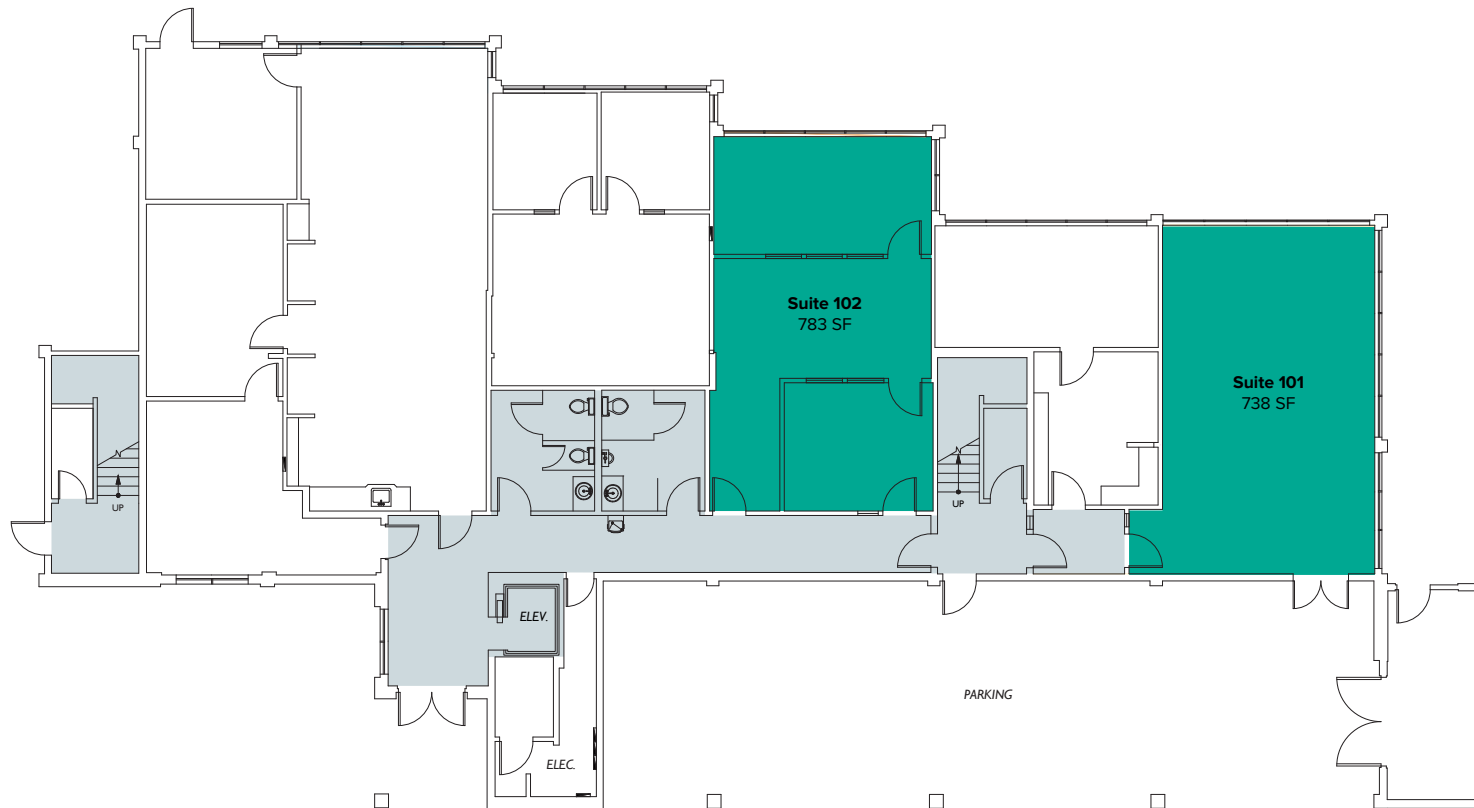
**738 SF - 783 SF Available**

## DETAILS:

- Quick access to I-90
- Easy walking to Gilman Boulevard retail stores and restaurants
- Beautiful landscaping with Issaquah Creek view
- Common area remodel underway
- Short walk to Issaquah Preston Trail

# FLOOR PLAN

Suite	Square Feet	Rent	Notes
101	738 SF	\$2,450/Month, Gross	Office space with open work area.
102	783 SF	\$2,600/Month, Gross	Office space with 1 PO, reception, and open work area.



# LOCATION MAP

