

OFFICE
LEASE



PARK HEIGHTS BUILDING

1800 112th Avenue NE | Bellevue, WA

Grant Rubenstein

425.289.2220

grant@rosenharbottle.com

425.454.3030
rosenharbottle.com

PO Box 5003
Bellevue, WA 98009 - 5003





OFFICE SPACES NEAR DOWNTOWN BELLEVUE

\$36.00/SF, Full Service

1,912 SF - 2,249 SF Available

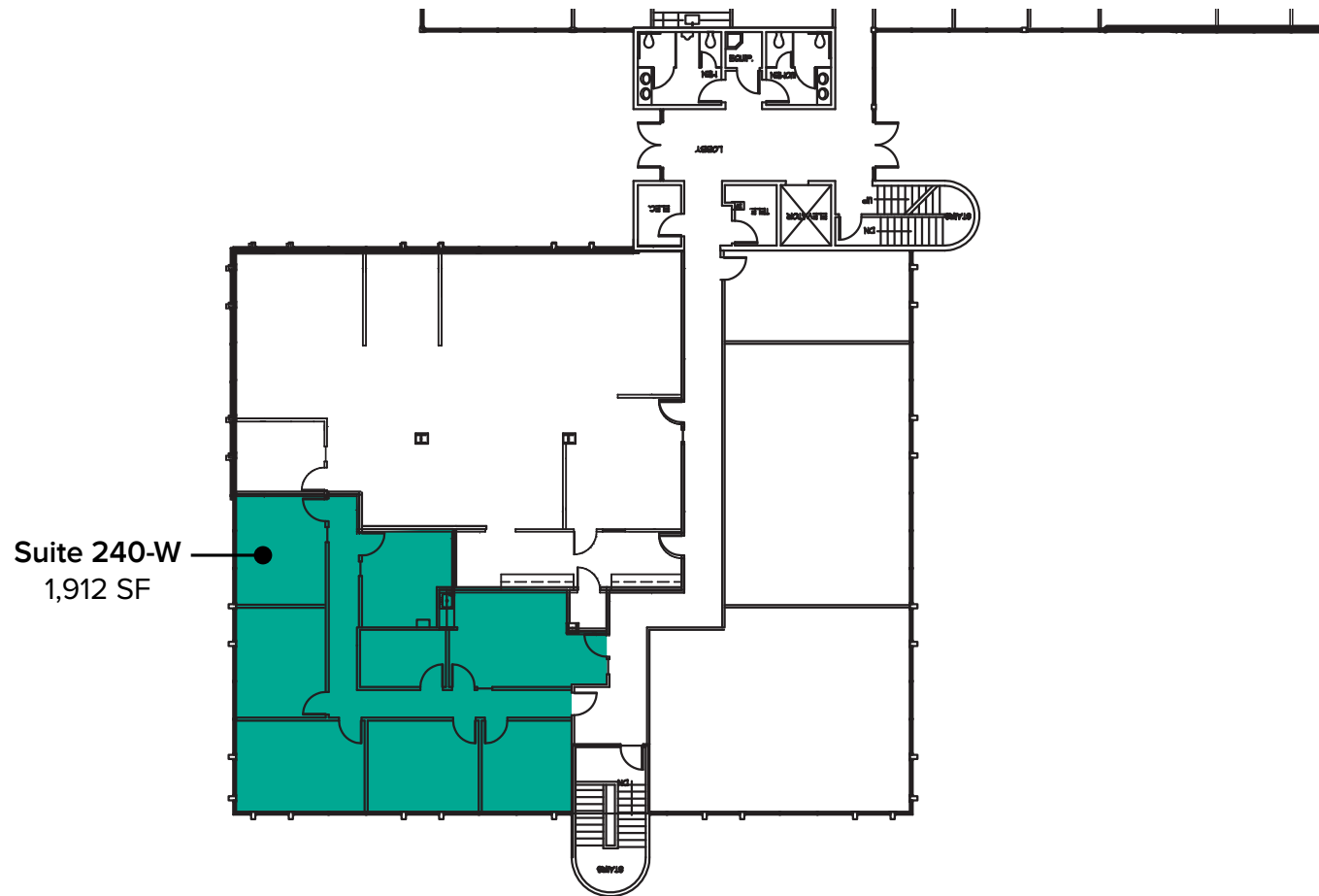
PROPERTY FEATURES:

- Close-In Bellevue Location
- Free Surface Parking
- Minutes from Downtown Bellevue, Bellevue Square, Overlake Medical Center, and Spring District
- Located next to I-405 and SR-520

The information provided herein has been obtained from sources believed to be reliable, but no representation or warranty, express or implied, is made with respect to the accuracy or completeness of any such information. Each prospective buyer or tenant should independently investigate, evaluate and verify all information provided herein and any other matters deemed material. Please consult your attorney, tax advisor or other professional advisor. The terms of sale or lease set forth herein are subject to change or withdrawal at any time and without notice.

SECOND LEVEL FLOOR PLAN

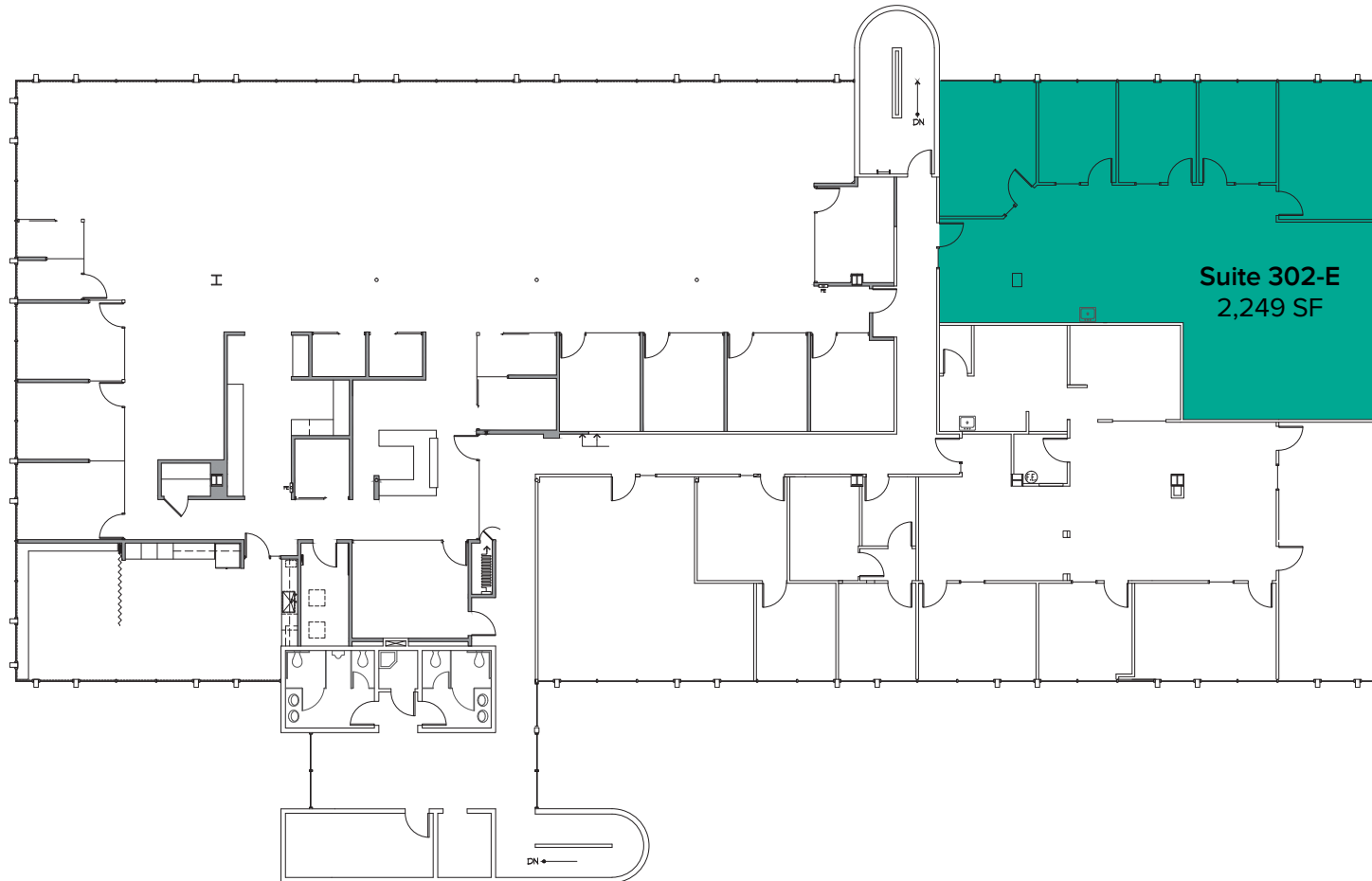
Suite	Square Feet	Rate	Notes
240-W	1,912 SF	\$36.00/SF, Full Service	Second floor office with 6 private offices, break room, and reception area. Available 8/1/2021.



The information provided herein has been obtained from sources believed to be reliable, but no representation or warranty, express or implied, is made with respect to the accuracy or completeness of any such information. Each prospective buyer or tenant should independently investigate, evaluate and verify all information provided herein and any other matters deemed material. Please consult your attorney, tax advisor or other professional advisor. The terms of sale or lease set forth herein are subject to change or withdrawal at any time and without notice.

THIRD LEVEL FLOOR PLAN

Suite	Square Feet	Rate	Notes
302-E	2,249 SF	\$36.00/SF, Full Service	Third floor office suite with 5 private offices and open office area. Available with 30 Days' Notice.



The information provided herein has been obtained from sources believed to be reliable, but no representation or warranty, express or implied, is made with respect to the accuracy or completeness of any such information. Each prospective buyer or tenant should independently investigate, evaluate and verify all information provided herein and any other matters deemed material. Please consult your attorney, tax advisor or other professional advisor. The terms of sale or lease set forth herein are subject to change or withdrawal at any time and without notice.

LOCATION MAP

