

RH NORTH CREEK BUSINESS CENTER

CLASS A FLEX SPACE FOR LEASE



11810 & 11818 North Creek Parkway N, Bothell, WA

Brian Stewart
(425) 289-2222
brians@rosenharbottle.com

Caleb Farnworth, CCIM
(425) 289-2235
calebf@rosenharbottle.com

RH | ROSEN
HARBOTTLE
COMMERCIAL REAL ESTATE

CLASS A OFFICE & FLEX SPACE FOR LEASE

2,157 SF - 11,434 SF Available

\$1.50/SF Office | \$1.10/SF Assembly | \$0.80/SF Warehouse

| Bldg-Suite | Total SF | Ofc SF | Whse SF | Available | Suite Notes |
|------------|-----------|-----------|---------|-----------|---|
| 1-202 | 2,157 SF | 2,157 SF | - | Now | 2nd floor office built out with private offices, open area, conference room, kitchenette and reception. 3 perimeter walls on window line. |
| 4-105 | 11,434 SF | 11,434 SF | TBD | Now | Space is currently all office. Landlord is willing to convert 20% of space to assembly/tech or warehouse. GL loading available. |
| 5-102 | 5,709 SF | 2,503 SF | 3,206 | 6/17/2018 | Office/warehouse space with 1GL, several POs, conference room, breakroom and open work area. Warehouse has mezzanine. |



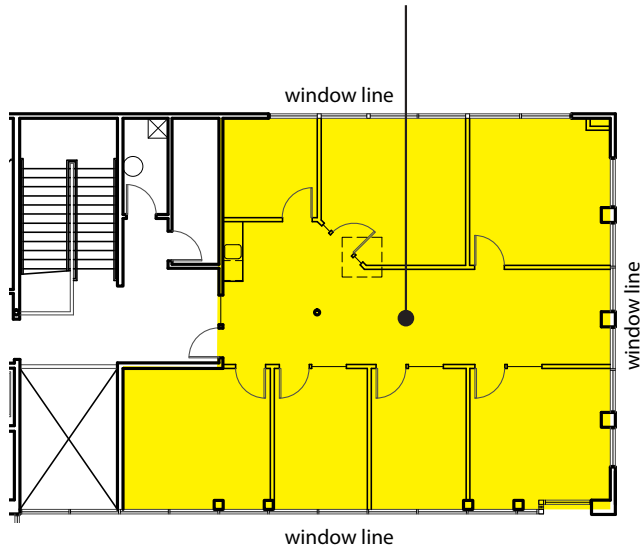
Business Park Features:

- On-Site Deli
- Nearby Amenities: Restaurants, Retail, Childcare, Corporate Marriott, Walking Trails & Sports Fields
- Quick Access to I-405, SR-522 & Downtown Bothell

Second Floor

As Is Floor Plan

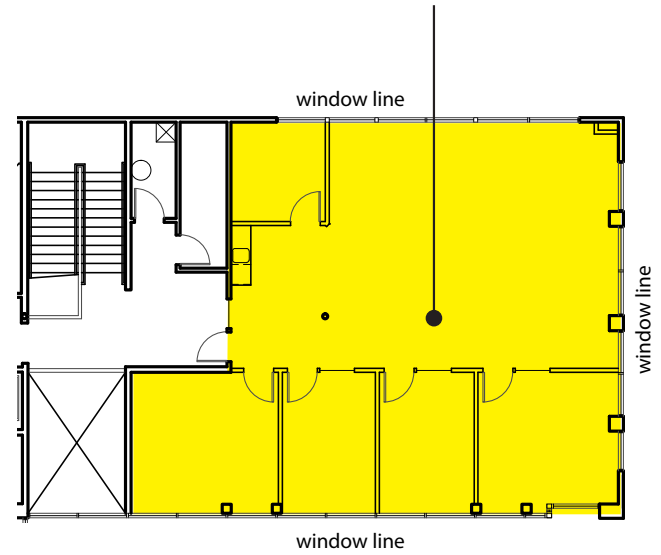
Suite 202
2,157 SF



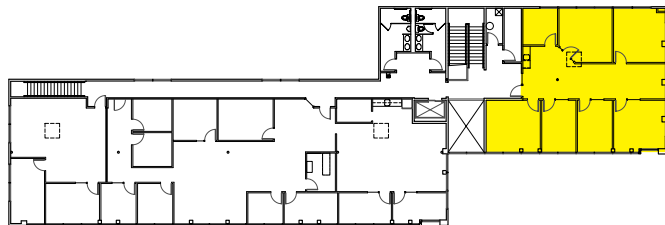
Optional Floor Plan

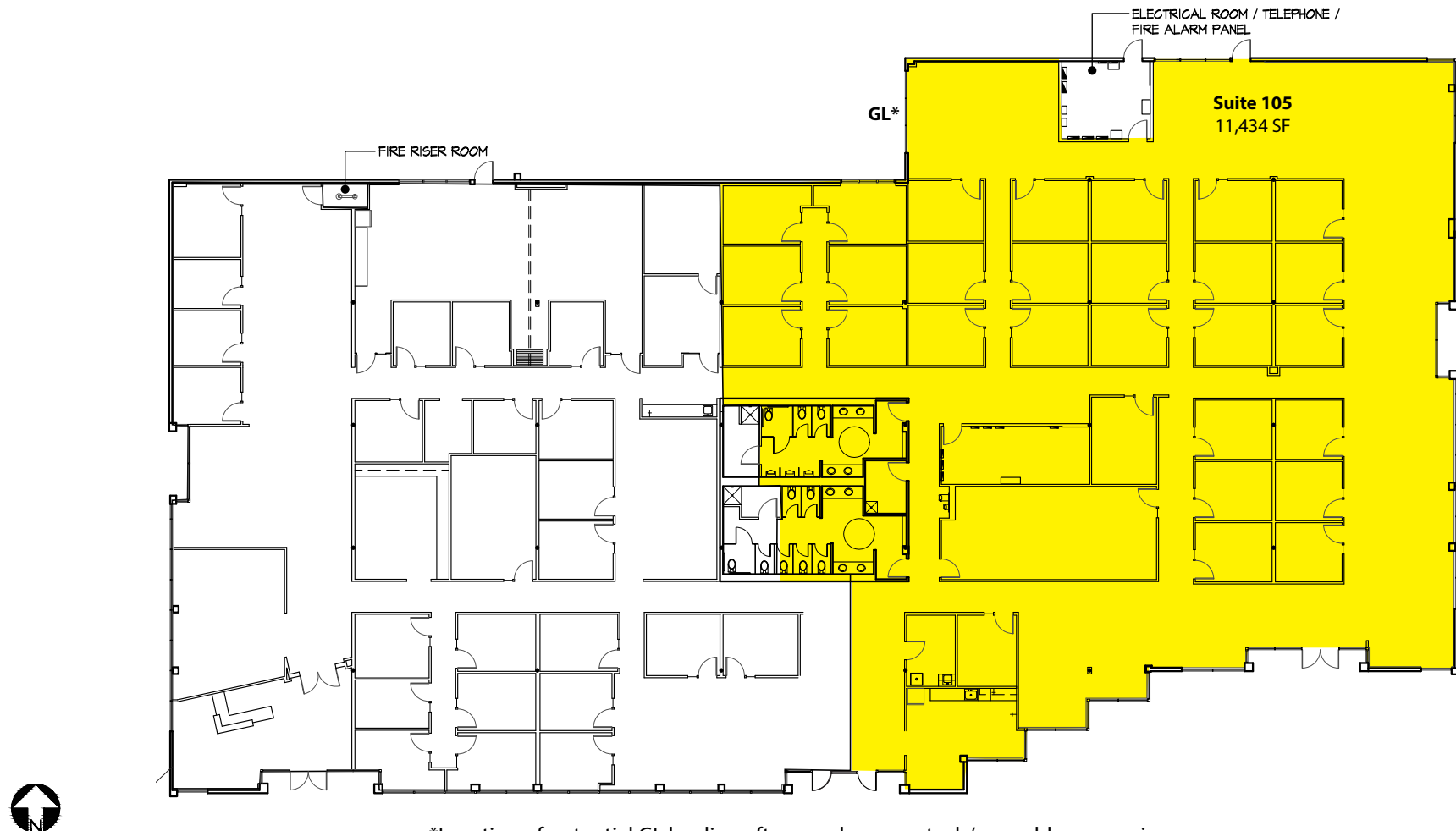
This floor plan is for example purposes only.

Suite 202
2,157 SF



Building Location

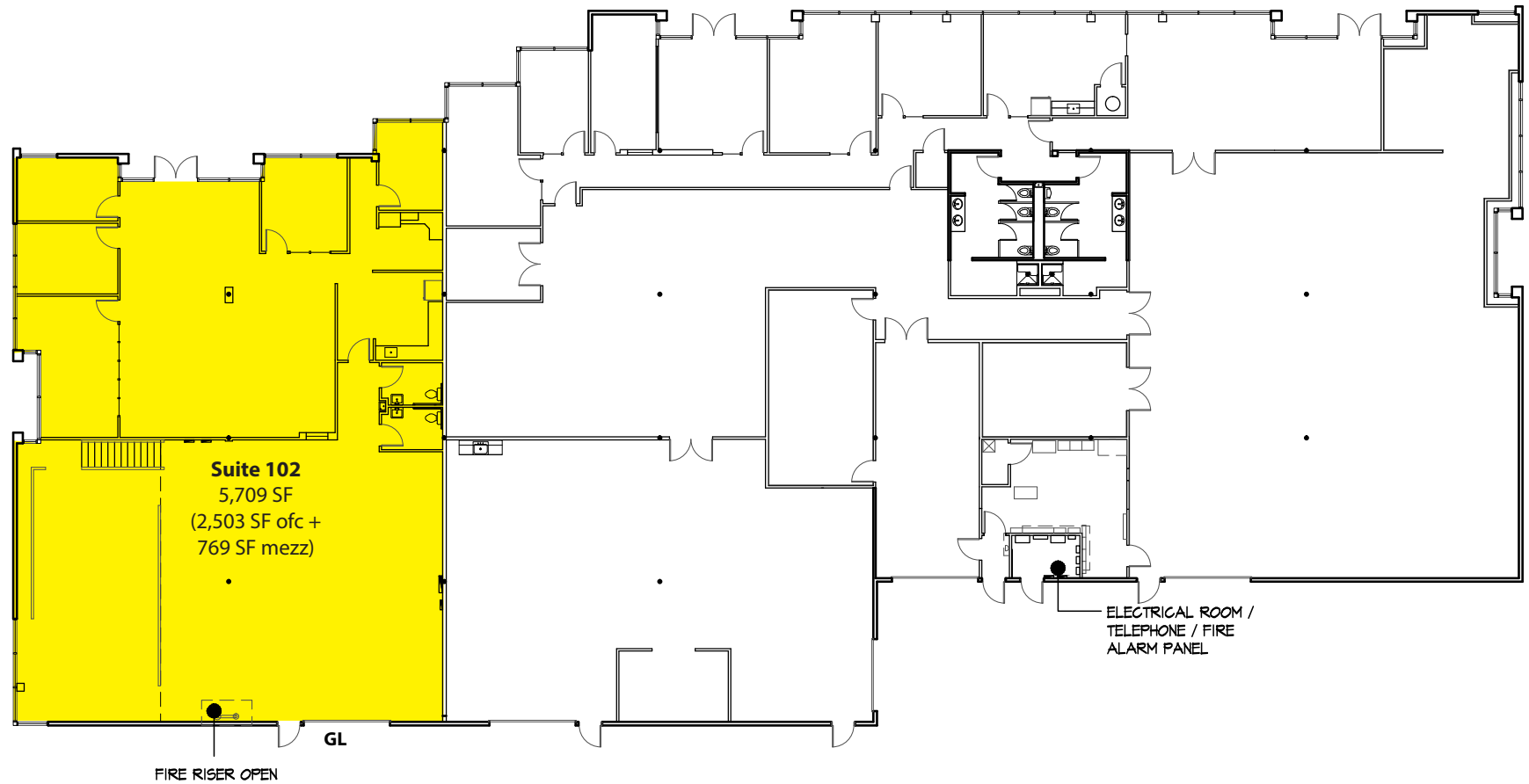




*Location of potential GL loading after warehouse or tech/assembly conversion

FEATURES:

- Class A Office Building
- GL Loading Available with Warehouse or Assembly/Tech Conversion
- Building Signage
- Visibility from North Creek Pkwy



FEATURES:

- GL Loading
- Several POs, Conference Room, Breakroom
- Open Work Area
- Mezzanine in Warehouse



**RH NORTH CREEK
BUSINESS CENTER**

- | | | |
|---------------------------------|-------------------------------|------------------------|
| 1. AT&T | 6. AT&T | 11. Talentwise |
| 2. RH North Creek-Bldg 2 | 7. United Healthcare Services | 12. Tetra Tech |
| 3. General Dynamics | 8. Progressive, Banner Bank | 13. T-Mobile |
| 4. RH North Creek-Bldg 4 | 9. Vertafore | 14. Puget Sound Energy |
| 5. Google | 10. State Farm | 15. HUB International |