

EVERGREEN INDUSTRIAL CENTER

19510 144th Avenue NE, Woodinville, WA 98072

FINAL SPACE AVAILABLE



SMALL WAREHOUSE w/ GRADE-LEVEL LOADING

	Suite	Total SF	Office SF	Rent/ Month	NNN	Total/ Month
Option 1	C-8	4,584 SF	0 SF	\$3,576	\$1,284	\$4,860
Option 2	C-7	4,500 SF	641 SF	\$3,600	\$1,260	\$4,860

FEATURES:

- **For Sublease through 12/31/2019**
- Quick Access to SR 522 & I-405
- GL or DH Loading
- 20' - 24' Clear Height
- Sprinklered & 3-Phase Power



For more information, contact:

**ROSEN~HARBOTTLE
COMMERCIAL REAL ESTATE**

Caleb Farnworth, CCIM
(425) 289-2235
calebf@rosenharbottle.com

www.rosenharbottle.com

Rosen~Harbottle Commercial Real Estate | P.O. Box 5003 Bellevue, WA 98009-5003
phone: (425) 454-3030 fax: (425) 454-6705 | www.rosenharbottle.com

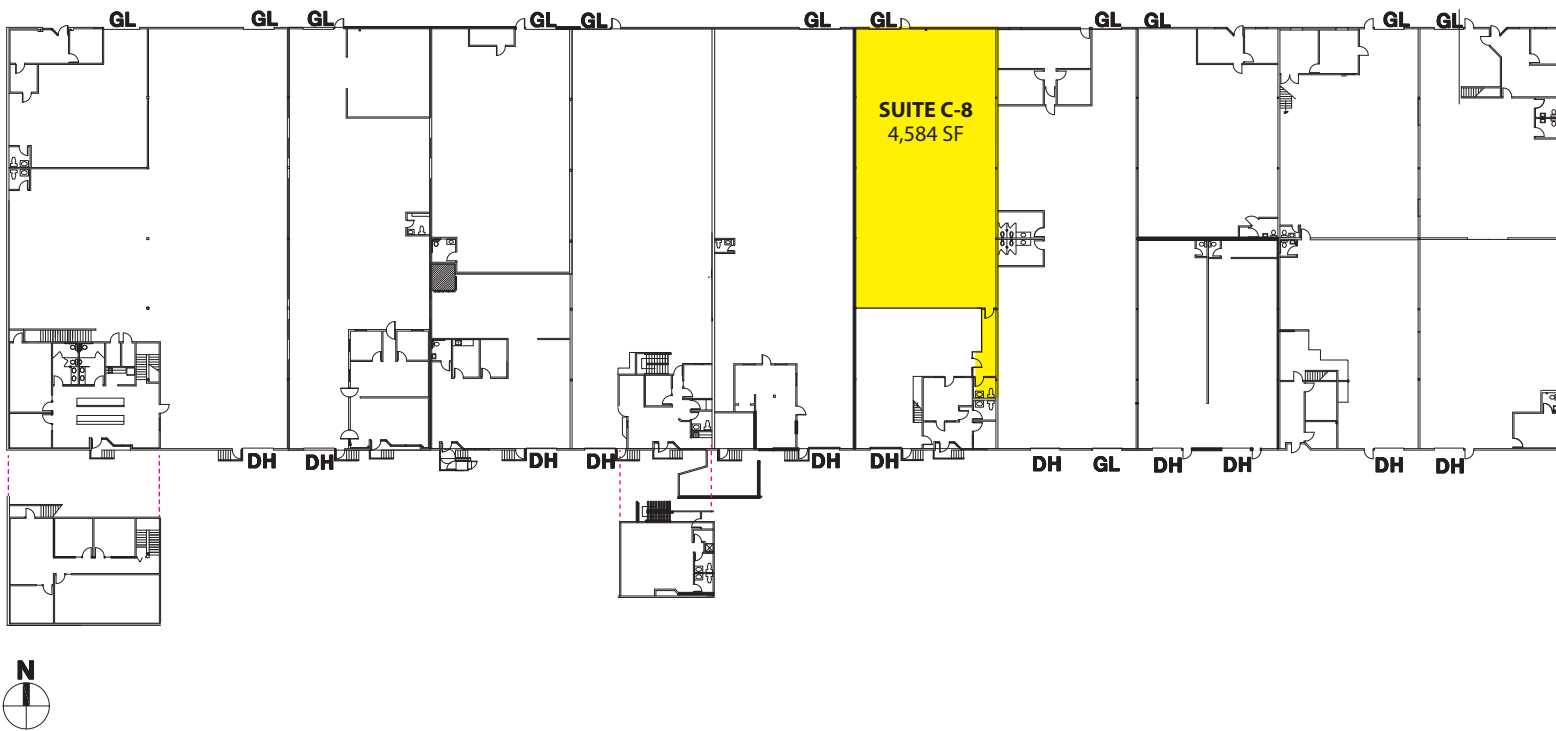
The information provided has been obtained from sources believed reliable. While we do not doubt its accuracy, we have not verified and make no guarantee, warranty or representation about it. It is your sole responsibility to independently confirm its accuracy and completeness.

EVERGREEN INDUSTRIAL CENTER

19510 144th Avenue NE, Woodinville, WA 98072

AVAILABLE SPACE - OPTION 1

Suite	Total SF	Ofc SF	Whse SF	Suite Notes
C-8	4,584 SF	0 SF	4,584 SF	Available for Sublease: 1 restroom and clear span warehouse. 1 grade-level, roll up door.



Rosen-Harbottle Commercial Real Estate | P.O. Box 5003 Bellevue, WA 98009-5003
phone: (425) 454-3030 fax: (425) 454-6705 | www.rosenharbottle.com

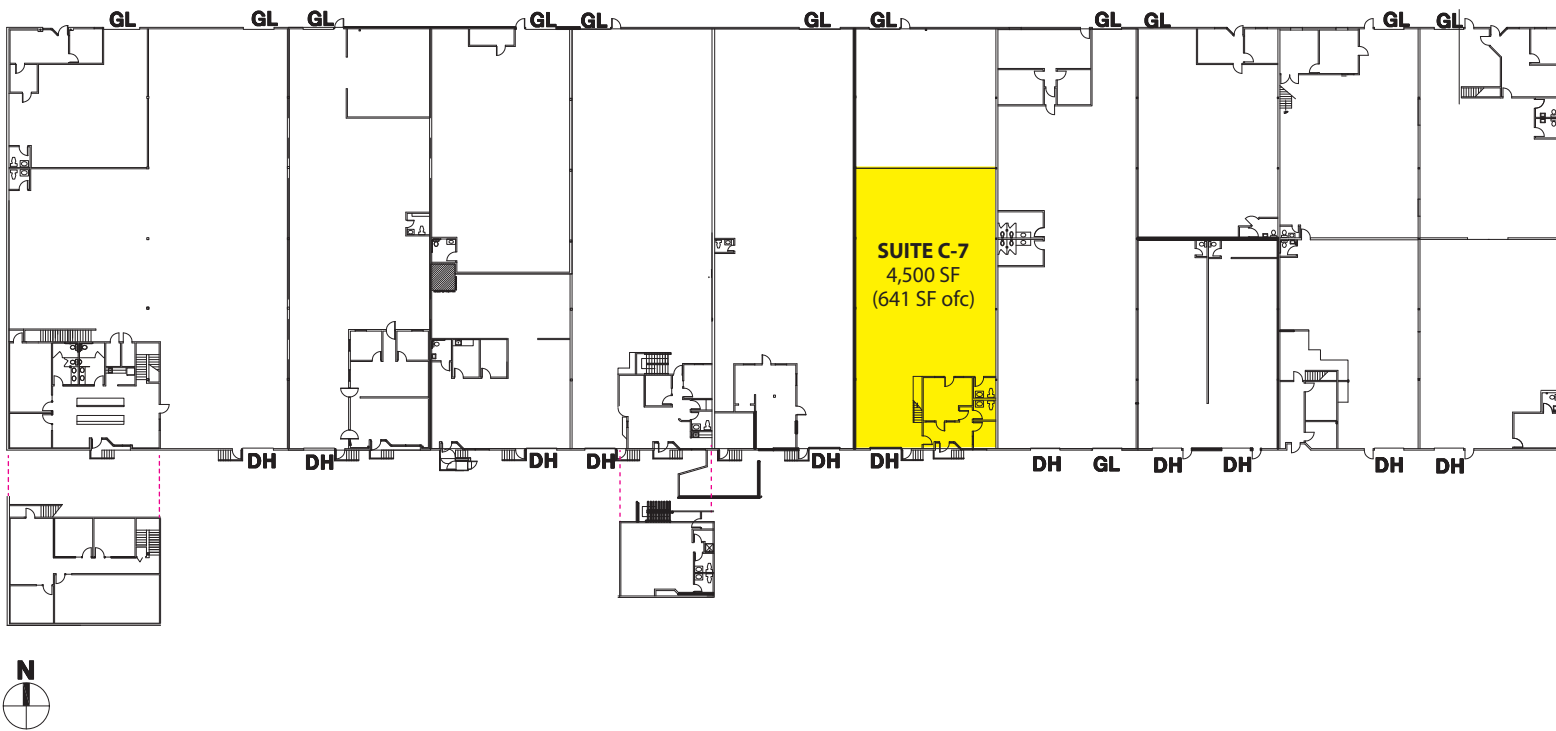
The information provided has been obtained from sources believed reliable. While we do not doubt its accuracy, we have not verified and make no guarantee, warranty or representation about it. It is your sole responsibility to independently confirm its accuracy and completeness.

EVERGREEN INDUSTRIAL CENTER

19510 144th Avenue NE, Woodinville, WA 98072

AVAILABLE SPACE - OPTION 2

Suite	Total SF	Ofc SF	Whse SF	Suite Notes
C-7	4,500 SF	641 SF	3,859 SF	Available for Sublease: Reception, 1 private office, 2 restrooms, conference room or large work area and clear span warehouse. Free mezz storage with space. 1 dock-high, roll up door.



Rosen-Harbottle Commercial Real Estate | P.O. Box 5003 Bellevue, WA 98009-5003
phone: (425) 454-3030 fax: (425) 454-6705 | www.rosenharbottle.com

The information provided has been obtained from sources believed reliable. While we do not doubt its accuracy, we have not verified and make no guarantee, warranty or representation about it. It is your sole responsibility to independently confirm its accuracy and completeness.

EVERGREEN INDUSTRIAL CENTER

19510 144th Avenue NE, Woodinville, WA 98072



WOODINVILLE WINE DISTRICT

Evergreen Industrial Center



- | | | | | |
|----------------------|------------------------------|------------------------------|-----------------------------|-----------------------|
| 1. Baer Winery | 9. Efeste | 17. Welcome Road Winery | 25. Chateau Rollat Winery | 33. Covington Cellars |
| 2. Pondera Winery | 10. Matthews Estate | 18. Gard Vintners | 26. Force Majeure Vineyards | 34. Barons Winery |
| 3. Sparkman Cellars | 11. Flying Dreams Winery | 19. Sol Stone Winery | 27. Auclair Winery | 35. Stevens Winery |
| 4. Kestrel Vintners | 12. Robert Ramsay Cellars | 20. Avennia Winery | 28. Aspenwood Cellars | 36. Hestia Cellars |
| 5. Gorman Winery | 13. Cullin Hills Winery | 21. Pacific Distillery | 29. JP Trodden Distilling | 37. Pomum Cellars |
| 6. Warr-King Wines | 14. Refuge & Prospect Winery | 22. Kevin White Winery | 30. DiStefano Winery | |
| 7. Patterson Cellars | 15. Vessel | 23. Convergence Zone Cellars | 31. Sheridan Vineyard | |
| 8. Alta Cellars | 16. Armstrong Family Winery | 24. Finn Hill Winery | 32. Two Vintners | |

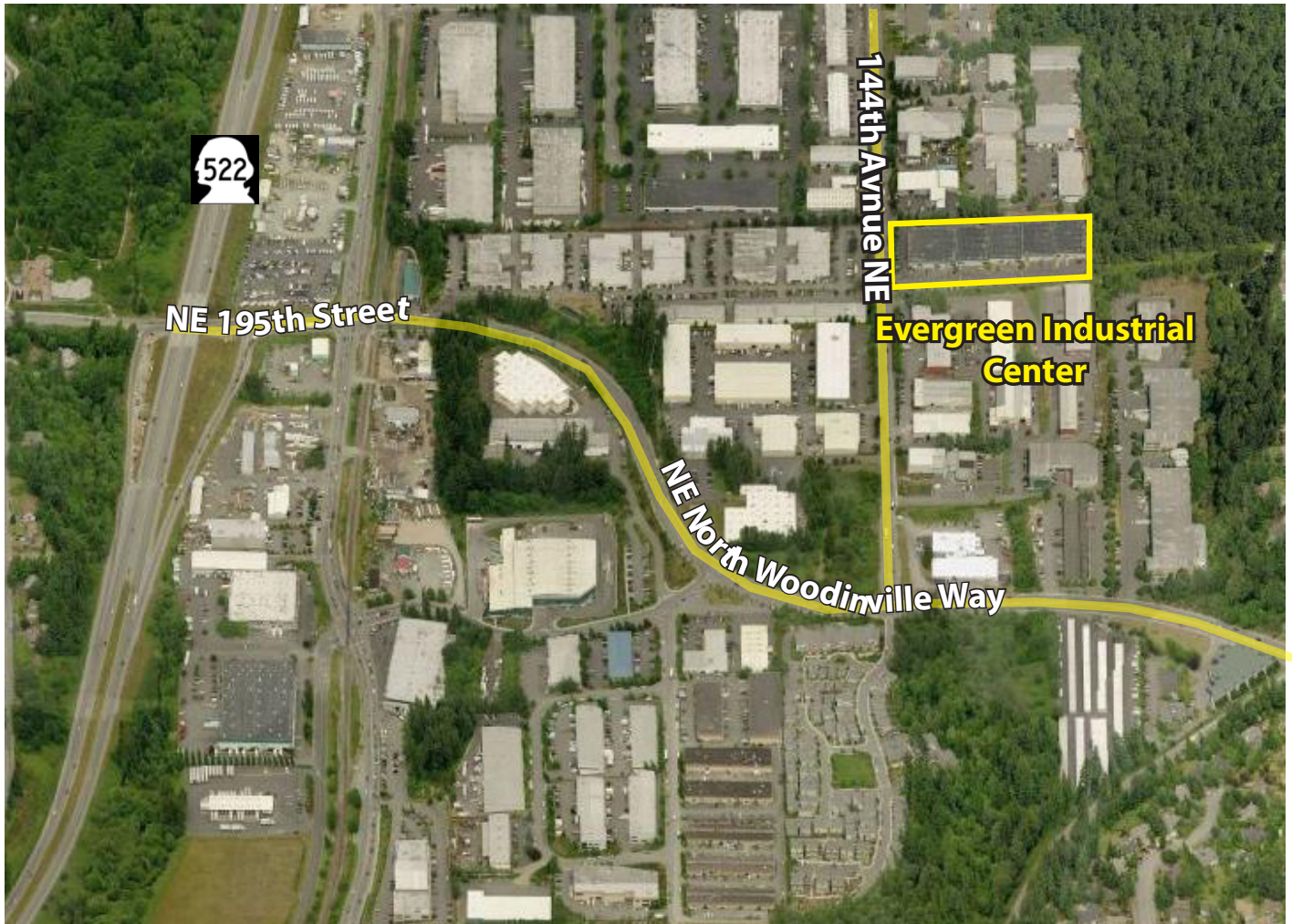
Rosen-Harbottle Commercial Real Estate | P.O. Box 5003 Bellevue, WA 98009-5003
phone: (425) 454-3030 fax: (425) 454-6705 | www.rosenharbottle.com

The information provided has been obtained from sources believed reliable. While we do not doubt its accuracy, we have not verified and make no guarantee, warranty or representation about it. It is your sole responsibility to independently confirm its accuracy and completeness.

EVERGREEN INDUSTRIAL CENTER

19510 144th Avenue NE, Woodinville, WA 98072

LOCATION INFORMATION



For more information, contact:

**ROSEN~HARBOTTLE
COMMERCIAL REAL ESTATE**

Caleb Farnworth, CCIM
(425) 289-2235
calebf@rosenharbottle.com

www.rosenharbottle.com

Rosen-Harbottle Commercial Real Estate | P.O. Box 5003 Bellevue, WA 98009-5003
phone: (425) 454-3030 fax: (425) 454-6705 | www.rosenharbottle.com

The information provided has been obtained from sources believed reliable. While we do not doubt its accuracy, we have not verified and make no guarantee, warranty or representation about it. It is your sole responsibility to independently confirm its accuracy and completeness.