

# RAINIER BUILDING



455 Rainier Blvd N, Issaquah, WA 98027

**Connor Feuerberg**

(425) 279-7943

connor@rosenharbottle.com

**Brian Stewart**

(425) 289-2222

brians@rosenharbottle.com

**RH** ROSEN  
HARBOTTLE  
COMMERCIAL REAL ESTATE



# RARE DOWNTOWN ISSAQUAH OFFICE SPACE FOR LEASE

1,200 SF Available Now

\$30.00/SF, Gross

## Property Features:

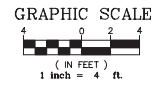
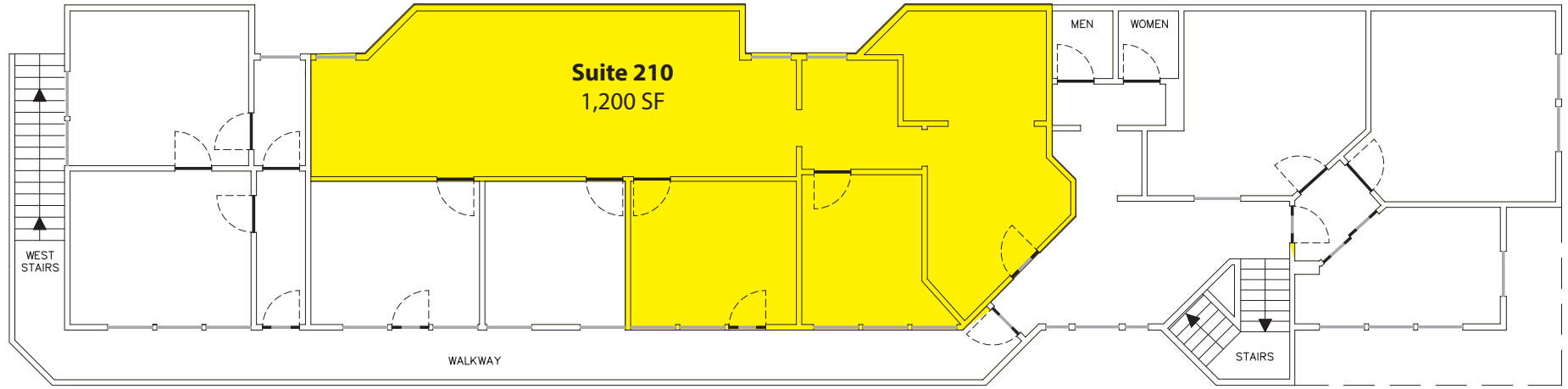
- Historic Downtown Location
- Second Floor Office Space
- Reception, 2 POs, Kitchenette & Open Work Area
- Quick Access to I-90 from Front Street
- Nearby Amenities within Walking Distance
  - Many Restaurants, Confluence Park, Depot Park & Rainier Trail



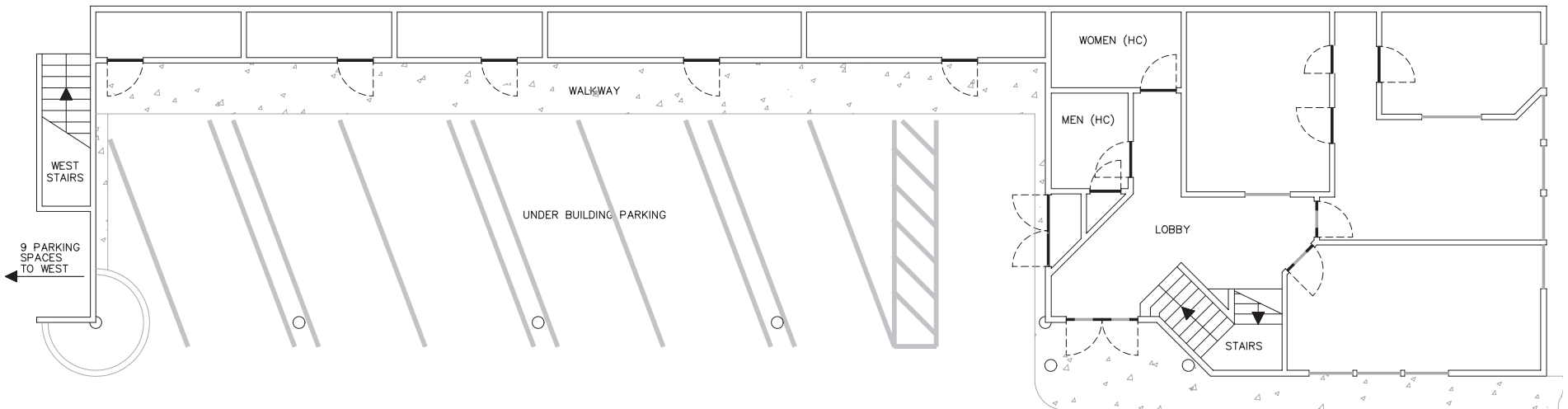
| Suite | Square Feet | Rent |
|-------|-------------|------|
|-------|-------------|------|

|     |          |                   |
|-----|----------|-------------------|
| 210 | 1,200 SF | \$30.00/SF, Gross |
|-----|----------|-------------------|

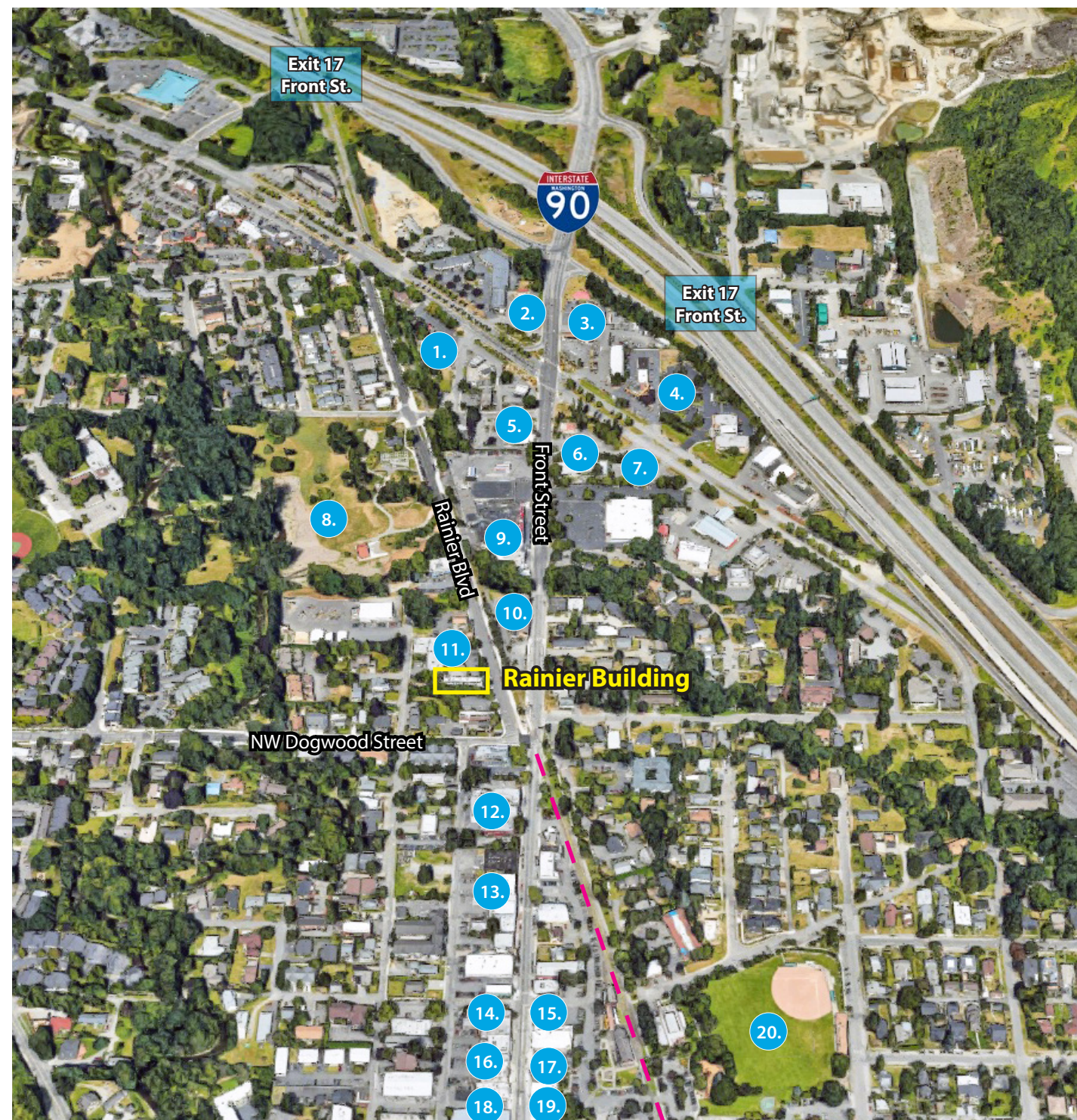
SECOND STORY



FIRST STORY







— The Rainier Trail

1. Benjamin Moore
2. BigO Tires
3. CarToys
4. Virginia Mason Medical Center
5. Bank of America
6. Coconut Thai
7. Bright Horizons
8. Confluence Park
9. Darigold
10. Forest Fairy Bakery
11. State Farm
12. Village Theater
13. Levitate Gastropub
14. Montalcino
15. Subway  
Domino's
16. Las Margaritas
17. Stan's Bar-B-Q
18. Issaquah Library
19. Jak's Grill
20. Depot Park  
Veteran's Memorial Field