

MILITARY ROAD S BUILDING

8300 MILITARY ROAD S, SEATTLE, WA 98108



WAREHOUSE SPACE AVAILABLE

4,225 SF | \$0.68 / SF, NNN

FEATURES:

- Visibility to I-5
- GL Loading
- 24' Clear Height
- 3-Phase Power
- Concrete Tilt-Up Construction

For more information, contact:

**ROSEN~HARBOTTLE
COMMERCIAL REAL ESTATE**

Jack Rosen

(425) 289-2221

jack@rosenharbottle.com

www.rosenharbottle.com

Rosen~Harbottle Commercial Real Estate | P.O. Box 5003 Bellevue, WA 98009-5003
phone: (425) 454-3030 fax: (425) 454-6705 | www.rosenharbottle.com

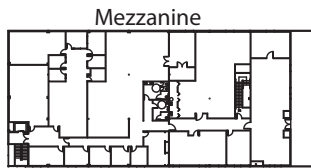
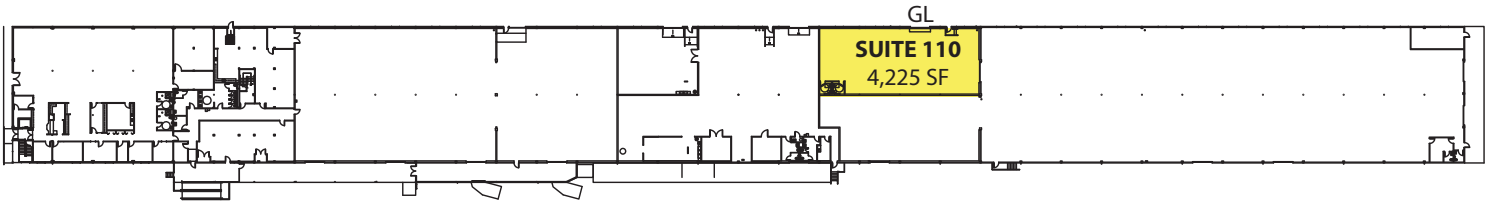
The information provided has been obtained from sources believed reliable. While we do not doubt its accuracy, we have not verified and make no guarantee, warranty or representation about it. It is your sole responsibility to independently confirm its accuracy and completeness.

MILITARY ROAD S BUILDING

8300 MILITARY ROAD S, SEATTLE, WA 98108

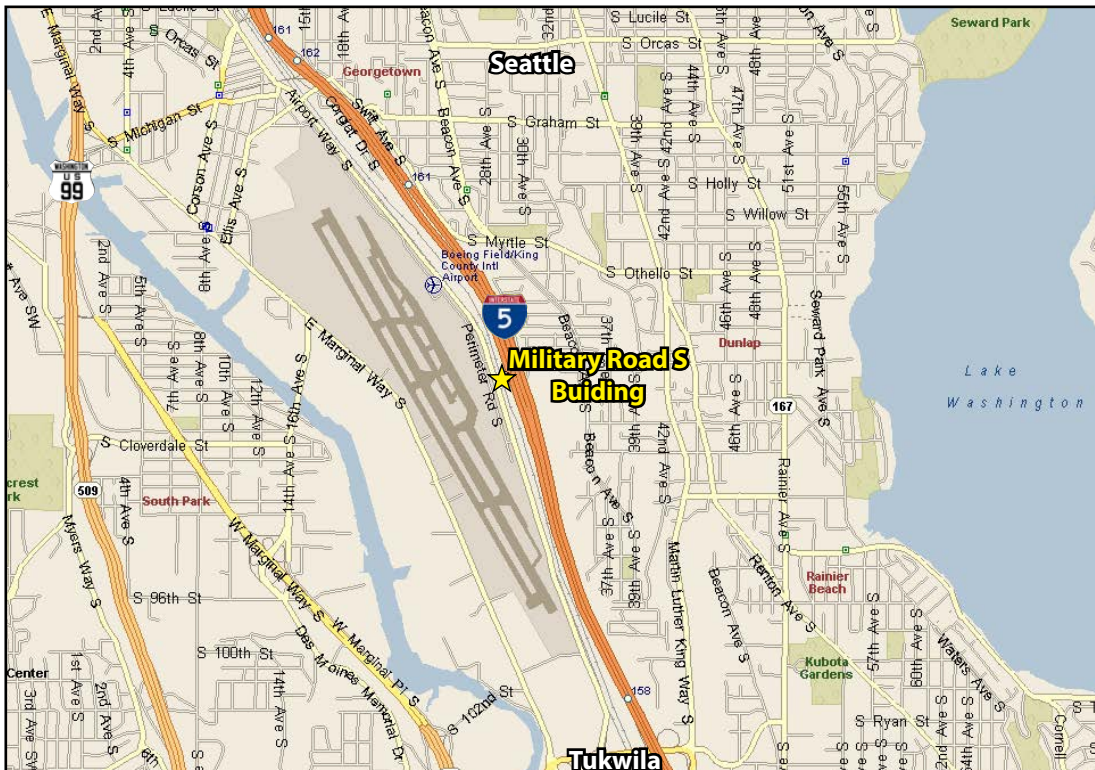
SPACE AVAILABLE

Suite	SF	Available
110	4,225	5/1/2016



FULL BUILDING FLOOR PLAN

NOT TO SCALE



Rosen~Harbottle Commercial Real Estate | P.O. Box 5003 Bellevue, WA 98009-5003
phone: (425) 454-3030 fax: (425) 454-6705 | www.rosenharbottle.com

The information provided has been obtained from sources believed reliable. While we do not doubt its accuracy, we have not verified and make no guarantee, warranty or representation about it. It is your sole responsibility to independently confirm its accuracy and completeness.