

RETAIL  
LEASE



## EASTGATE MARKETPLACE

420 N Wilbur Avenue | Walla Walla, WA 99362

**Caleb Farnworth, CCIM**

425.289.2235

calebf@rosenharbottle.com

**Todd Wright**

509.386.2471

toddwright@windermere.com

425.454.3030  
rosenharbottle.com

PO Box 5003  
Bellevue, WA 98009 - 5003



# STAPLES, HARBOR FREIGHT, & ALBERTSON'S ANCHORED RETAIL CENTER

Retail Rate: \$14.00/SF

Retail NNN: \$4.14/SF

## RETAIL DETAILS:

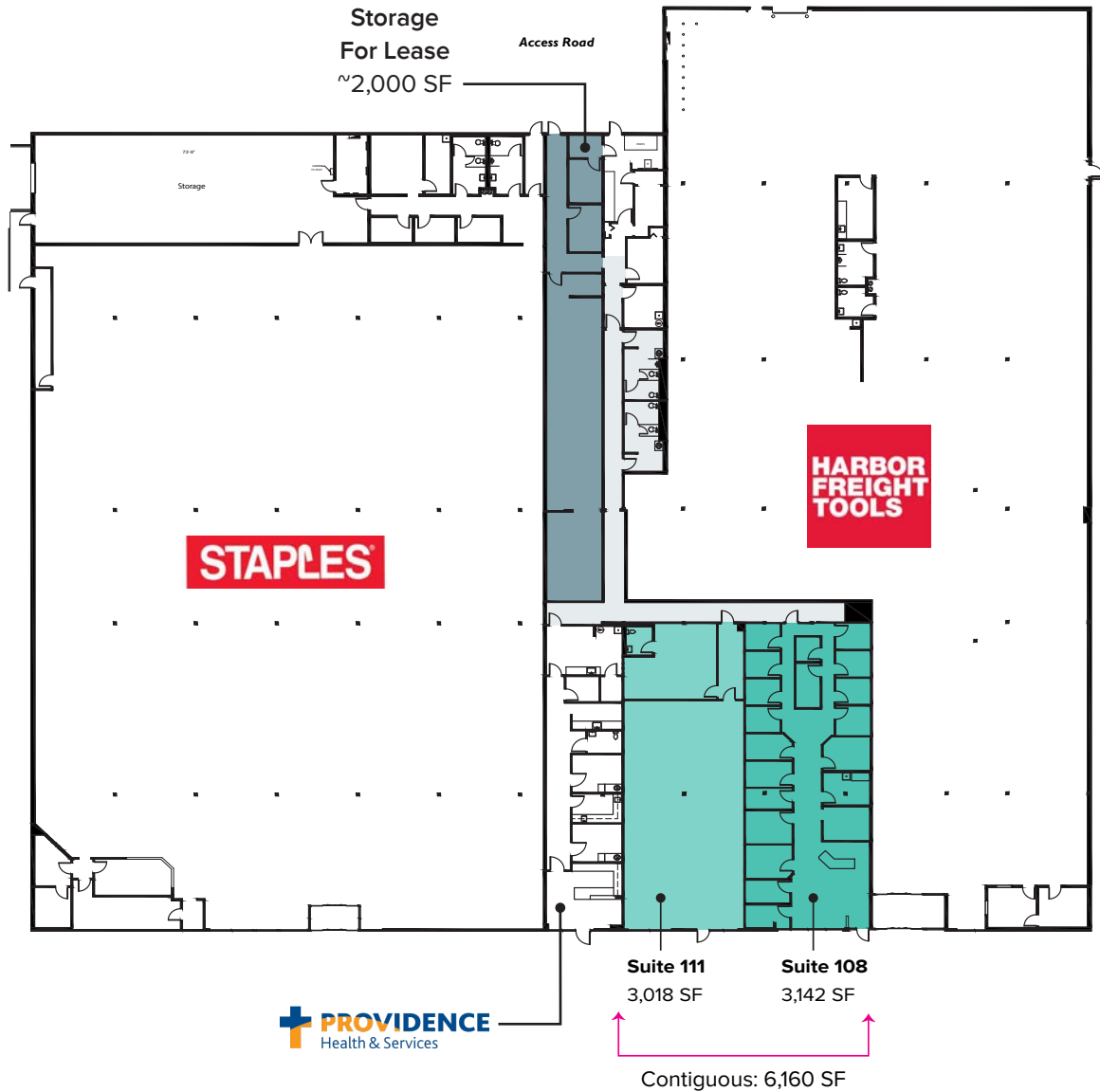
- 3,018 SF - 6,160 SF Available
- Contiguous Space
- Common area restrooms for customers

## STORAGE DETAILS:

- Up to 2,000 SF of storage space available
- \$1,000/Month, Gross
- 24/7 access through rear access road and entry door

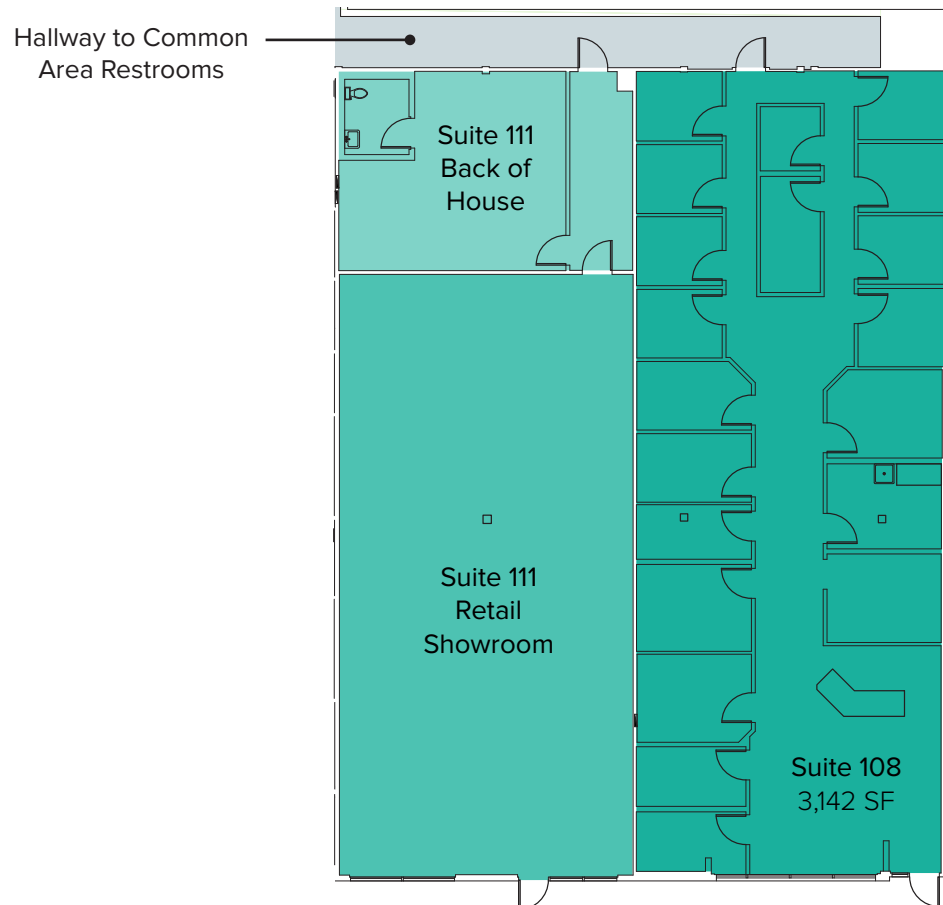


# SITE PLAN



# RETAIL FLOOR PLAN

Suite	Square Feet	Rate	Notes
108	3,142 SF - 6,160 SF	\$14.00/SF, NNN	Former tanning salon with several private rooms & reception. Contiguous with Suite 111 for a total of 6,160 SF. <b>Available 2/1/2021.</b>
111	3,018 SF - 6,160 SF	\$14.00/SF, NNN	Retail area with showroom area, back of house space, & 1 restroom. Contiguous with Suite 108 for a total of 6,160 SF. <b>Available now.</b>



# LOCATION MAP

