

HIGH-EXPOSURE RETAIL



ALDERWOOD EAST SHOPPING CENTER

18910 - 18930 28th Avenue W | Lynnwood, WA

Jack Rosen
(425) 289-2221
jack@rosenharbottle.com

Grant Rubenstein
(425) 289-2220
grant@rosenharbottle.com

Connor Feuerberg
(425) 279-7943
connor@rosenharbottle.com

RH ROSEN
HARBOTTLE
COMMERCIAL REAL ESTATE

ACROSS FROM ALDERWOOD MALL

1,075 SF* - 3,646 SF Available

\$28.00 / SF, NNN

FEATURES:

- Frontage on Alderwood Mall Blvd Near I-5
 - Heavy Foot Traffic Location
 - Now Open: Daiso Japan & DXL
 - 198,000 Cars per Day on I-5
20,000+ Cars per Day on 28th Avenue
 - Tenants Include 24 Hour Fitness, Deep Roots Tattoo, Daiso, Chop It Up Barbershop, & DXL
- * 1,075 SF - 1,550 SF (Suites 101 & 201) - \$33.00/SF, Gross



AVAILABLE SPACE

Suite	Square Feet	Rate
A-2	3,646 SF	\$28.00/SF, NNN
Notes: Shell-condition open retail with 1 RR, 200 amps & new HVAC		
H	2,736 SF	\$28.00/SF, NNN
Notes: Shell-condition open retail. Double-door entry and rear door. 1 RR		



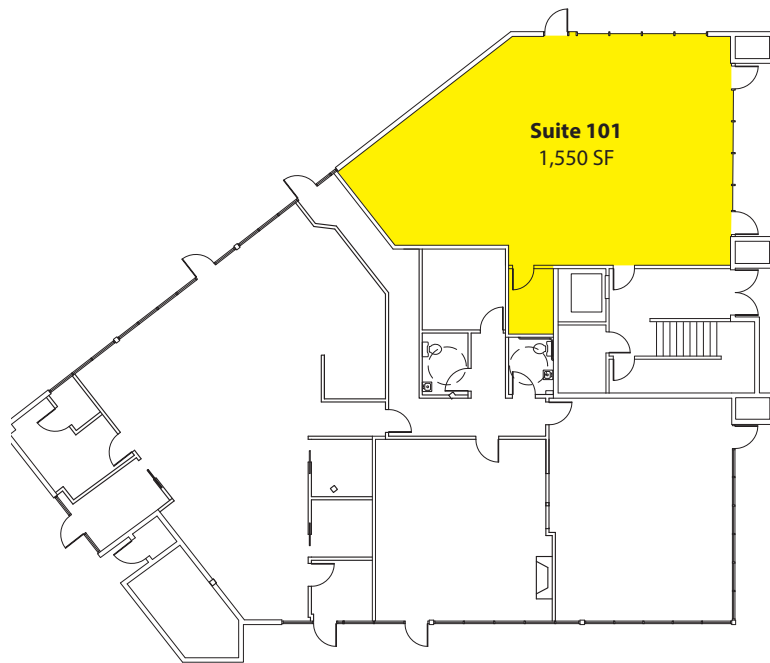
AVAILABLE SPACE

Suite	Square Feet	Rate
101	1,550 SF	\$33.00/SF, Gross

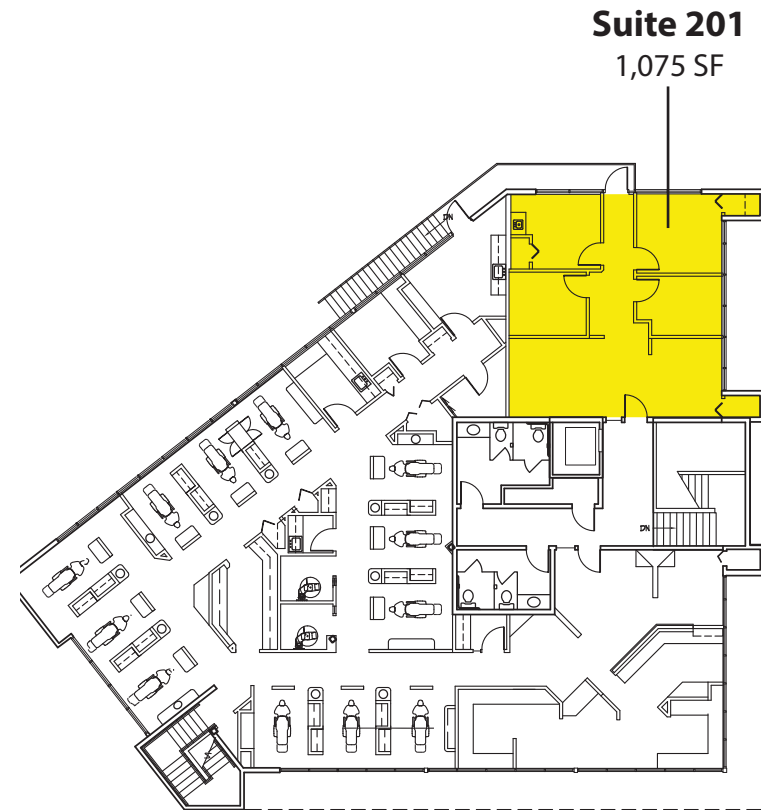
Notes: Retail/Office space. Available 9/1/2019

201	1,075 Sf	\$33.00/SF Gross
-----	----------	------------------

Notes: Retail/Office space. Available with 30 Days Notice



First Floor



Second Floor

RETAIL TRADE MAP



The information provided has been obtained from sources believed reliable. While we do not doubt its accuracy, we have not verified and make no guarantee, warranty or representation about it. It is your sole responsibility to independently confirm its accuracy and completeness.