

OFFICE/RETAIL  
LEASE



# GATEWAY POINTE BUSINESS PARK

## 2601 - 2715 Jahn Ave NW | Gig Harbor, WA

**Caleb Farnworth, CCIM**

425.289.2235

calebf@rosenharbottle.com

**Mike Armanious, CCIM**

253.988.6115

marmanious@kw.com

425.454.3030  
rosenharbottle.com

PO Box 5003  
Bellevue, WA 98009 - 5003





# LOW PRICES IN GIG HARBOR

**728 SF - 8,084 SF Available**

## IDEAL USES:

- Small Church
- Office/Medical
- Showroom
- Fitness Center/Recreation Uses
- Education / Training
- Boutique Store/Salon

## FEATURES:

- On-Site Amenities: Exercise Facility and Daycare
- High Visibility to 70,000+ Cars/Day on Highway 16
- View of Narrows Bridge & Olympic Mountains
- 4 Stalls / 1,000 SF Parking Ratio
- Vaulted Ceilings with Skylights
- Heating and Air Conditioning Throughout



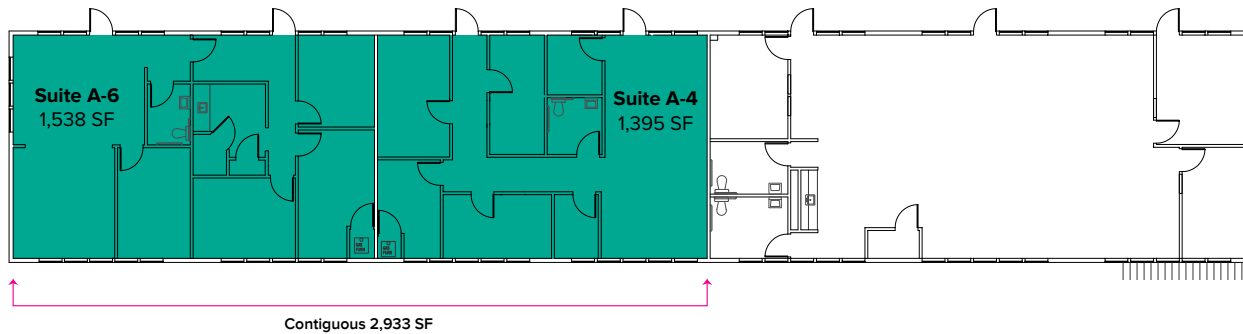
# SUITE DETAILS

Suite	Square Feet	Rent
A-4	1,395 SF - 2,933 SF	\$2,151/Month
A-6	1,538 SF - 2,933 SF	\$2,371/Month
A-9	772 SF	\$1,287/Month
A-11	760 SF - 1,488 SF	\$1,267/Month
A-12	728 SF - 1,488 SF	\$728/Month
B 4-6	2,853 SF	\$4,398/Month
B 10-12	2,537 SF	\$3,488/Month
C-7	767 SF - 1,543 SF	\$1,278/Month
C-8	776 SF - 1,543 SF	\$1,293/Month
C 10-12	2,853 SF	\$3,923/Month
F-05	1,362 SF	\$2,100/Month
H-06	2,940 SF - 8,084 SF	Call Agent
H 07-12	5,144 SF - 8,084 SF	Call Agent

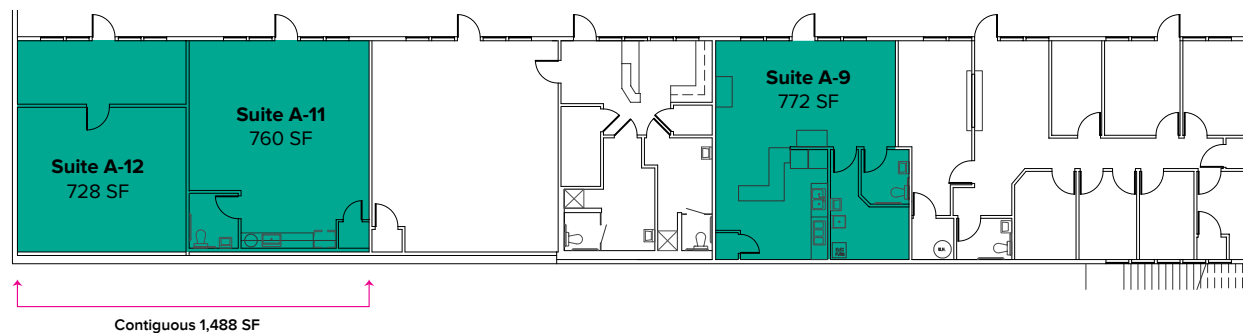


# FLOOR PLAN

Suite	Square Feet	Rent	Notes
A-4	1,395 SF - 2,933 SF	\$2,151/Month	Second floor suite. 6 POs, 1 restroom, and open area. Contiguous with Suite A-6 for a total of 2,933 SF. <b>Available Now</b>
A-6	1,538 SF - 2,933 SF	\$2,371/Month	Second floor, end cap suite. 4 POs, 1 restroom, break room with kitchenette, and open area. Contiguous with Suite A-4 for a total of 2,933 SF. <b>Available 11/1/20.</b>

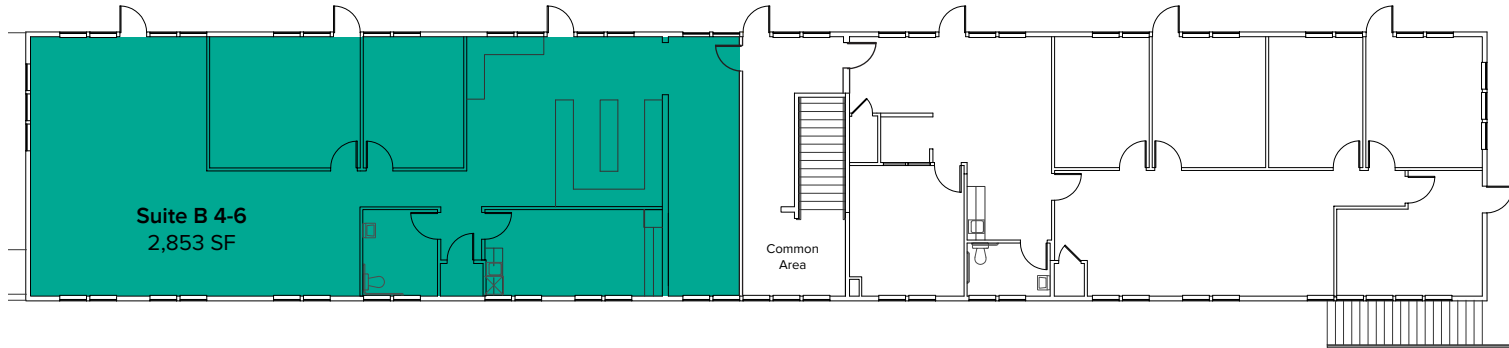


Suite	Square Feet	Rent	Notes
A-9	772 SF	\$1,287/Month	Restaurant/cafe space with kitchen, open area, and 1 restroom. <b>Available 11/1/20.</b>
A-11	760 SF - 1,488 SF	\$1,267/Month	First floor suite with open work area, 1 restroom, and kitchenette. Contiguous with Suite A-12 for a total of 1,488 SF. <b>Available Now.</b>
A-12	728 SF - 1,488 SF	\$728/Month	First floor unfurnished warehouse space. Contiguous with Suite A-11 for a total of 1,488 SF. <b>Available Now.</b>

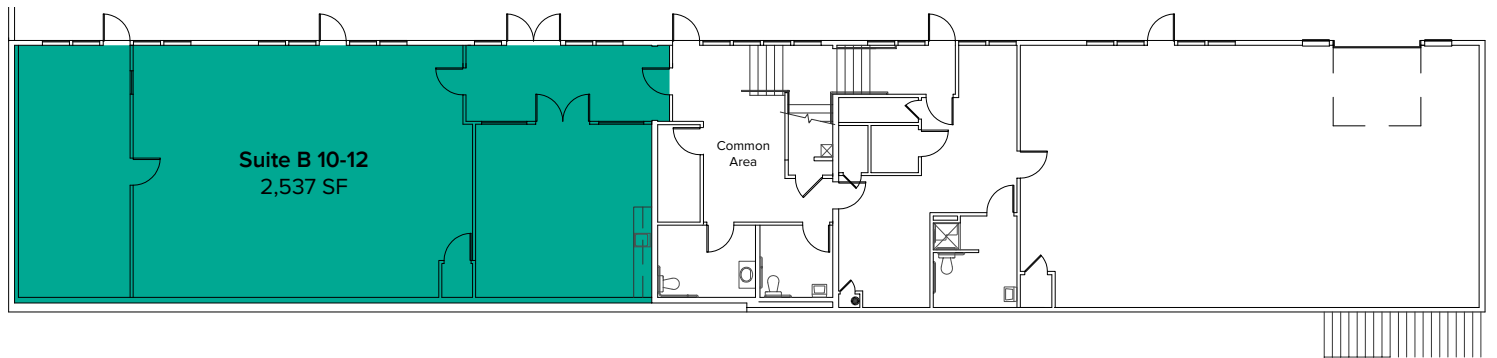


# FLOOR PLAN

Suite	Square Feet	Rate	Notes
B 4-6	2,853 SF	\$4,398/Month	Second floor suite includes 2 POs, reception area, open work space, break room, and 1 restroom. <b>Available Now.</b>

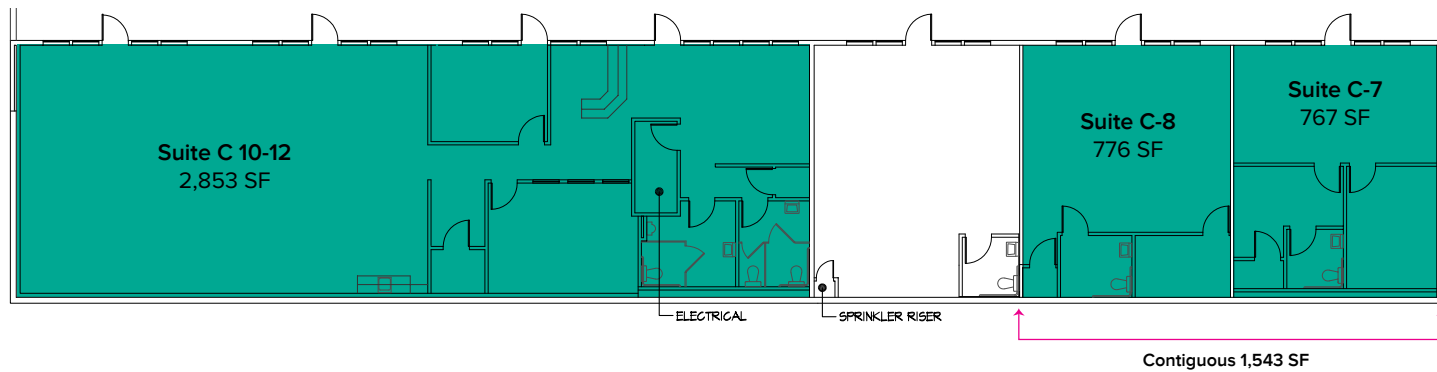


Suite	Square Feet	Rate	Notes
B 10-12	2,537 SF	\$3,488/Month	First floor suite includes break room and open work area. <b>Available Now.</b>

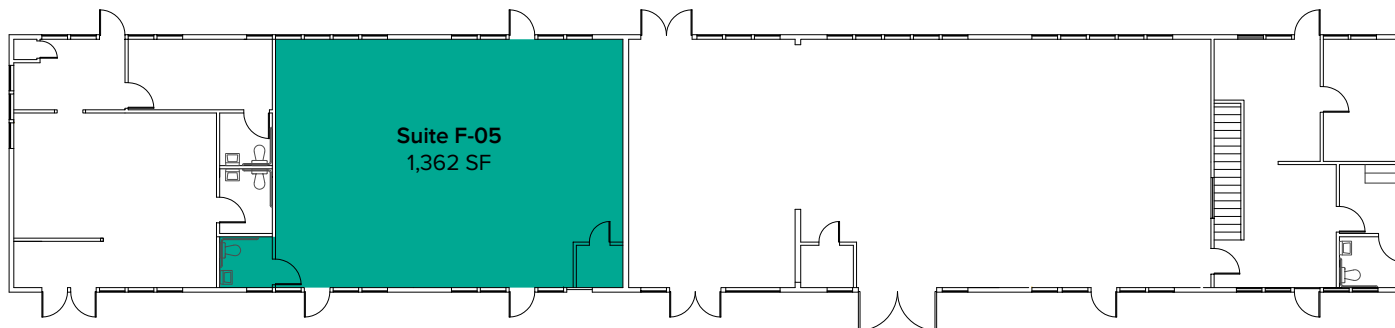


# FLOOR PLAN

Suite	Square Feet	Rent	Notes
C-7	767 SF	\$1,278/Month	First floor, end cap suite. 2 POs, 1 restroom, and open office area. Contiguous with Suite C-8 for a total of 1,543 SF. <b>Available now.</b>
C-8	776 SF	\$1,293/Month	First floor suite. 1 PO, 1 restroom, and open office area. Contiguous with Suite C-7 for a total of 1,543 SF. <b>Available now.</b>
C 10-12	2,853 SF	\$3,923/Month	Former fitness studio space with open work area, reception area, 2 private rooms, and 2 restrooms. <b>Available now.</b>

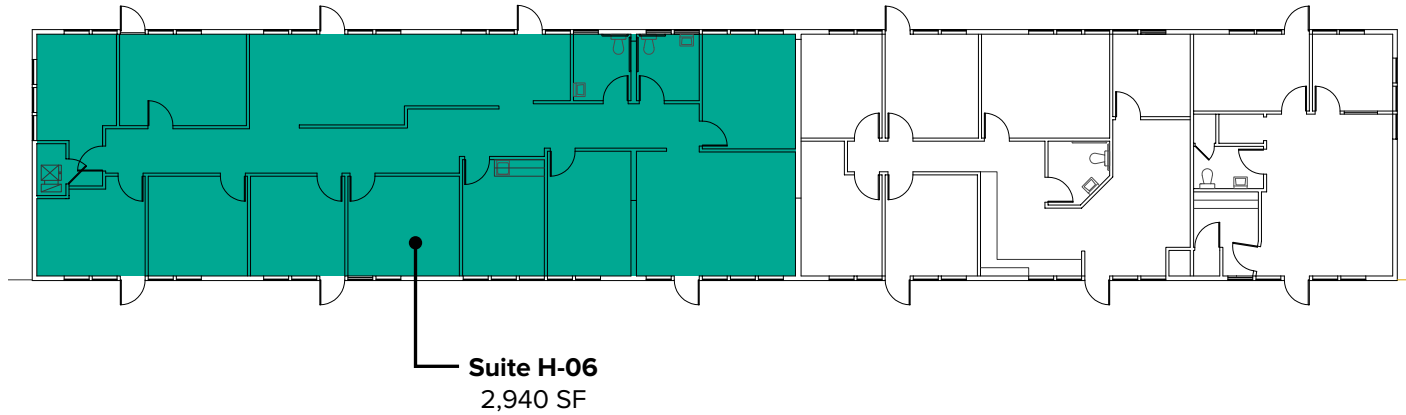


Suite	Square Feet	Rent	Notes
F-05	1,362 SF	\$2,100/Month	Second floor suite. Open area. Suite includes 1 restroom. <b>Available now.</b>

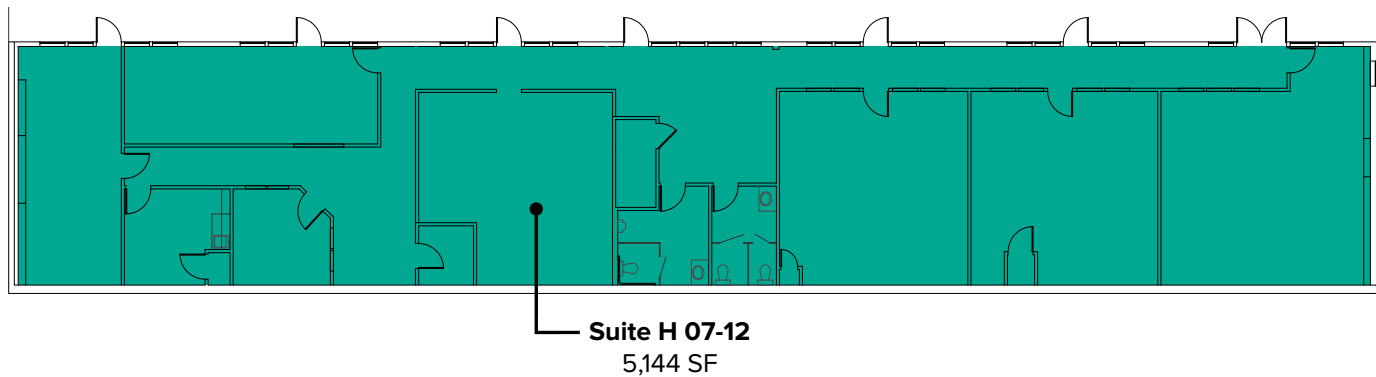


# FLOOR PLAN

Suite	Square Feet	Rate	Notes
H-06	2,940 SF - 8,084 SF	Call Agent	Second floor suite. Currently a pre-school. Suite includes break room and two restrooms.

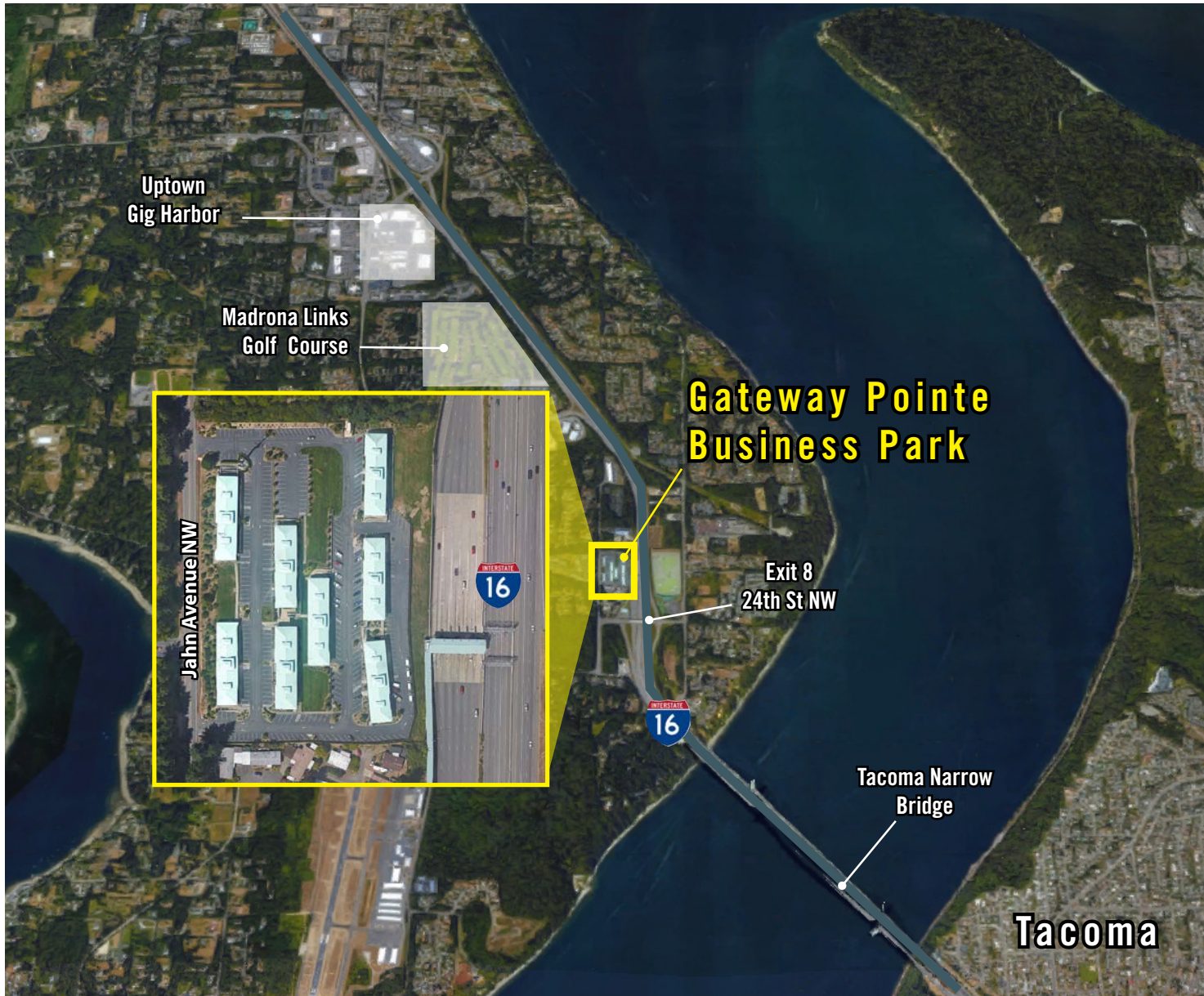


Suite	Square Feet	Rate	Notes
H 07-12	5,144 SF - 8,084 SF	Call Agent	First floor suite. Currently a pre-school. Suite includes break room and two restrooms.





# LOCATION MAP



## NEARBY AMENITIES:

Safeway  
Kohl's  
Homegoods  
Starbucks  
Panera Bread  
Applebee's Grill & Bar  
QFC  
AT&T  
Lunchbox Laboratory  
Marshalls  
Michaels  
Galaxy Theater

## DRIVE TIME:

Uptown Gig Harbor: 4 Minutes  
Downtown Gig Harbor: 8 Minutes  
Downtown Tacoma: 15 Minutes