

# Mt. Si Village Shopping Center

330 Main Avenue S, North Bend, WA 98045



## RETAIL SPACE FOR LEASE

800 SF Available

\$20.00/SF, NNN

### FEATURES:

- Floor to Ceiling Windows
- New Bartell Drugs Store Open 1 Block East
- Located Between Premiere Outlet Mall & Downtown
- Ace Hardware Anchor Tenant
- Abundant Parking



For more information, contact:

ROSEN~HARBOTTLE  
COMMERCIAL REAL ESTATE

**Caleb Farnworth, CCIM**  
(425) 289-2235  
calebf@rosenharbottle.com

**Jerry Harbottle**  
(425) 289-2216  
jerry@rosenharbottle.com

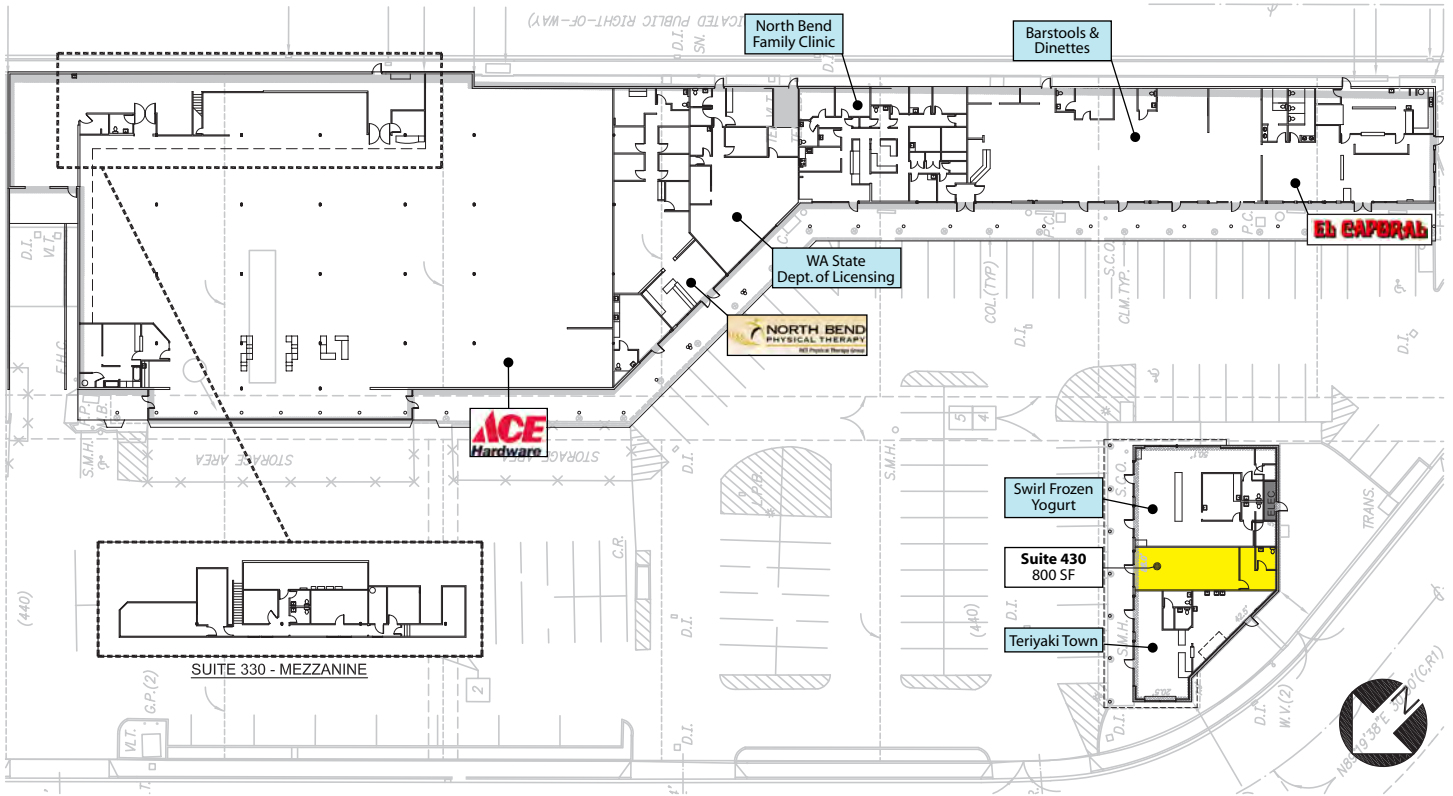
www.rosenharbottle.com

Rosen~Harbottle Commercial Real Estate | P.O. Box 5003 Bellevue, WA 98009-5003  
phone: (425) 454-3030 fax: (425) 454-6705 | www.rosenharbottle.com

The information provided has been obtained from sources believed reliable. While we do not doubt its accuracy, we have not verified and make no guarantee, warranty or representation about it. It is your sole responsibility to independently confirm its accuracy and completeness.

# Mt. Si Village Shopping Center

330 Main Avenue S, North Bend, WA 98045



Suite 430: 800 SF

• Open space with small back office area  
• 1 Restroom

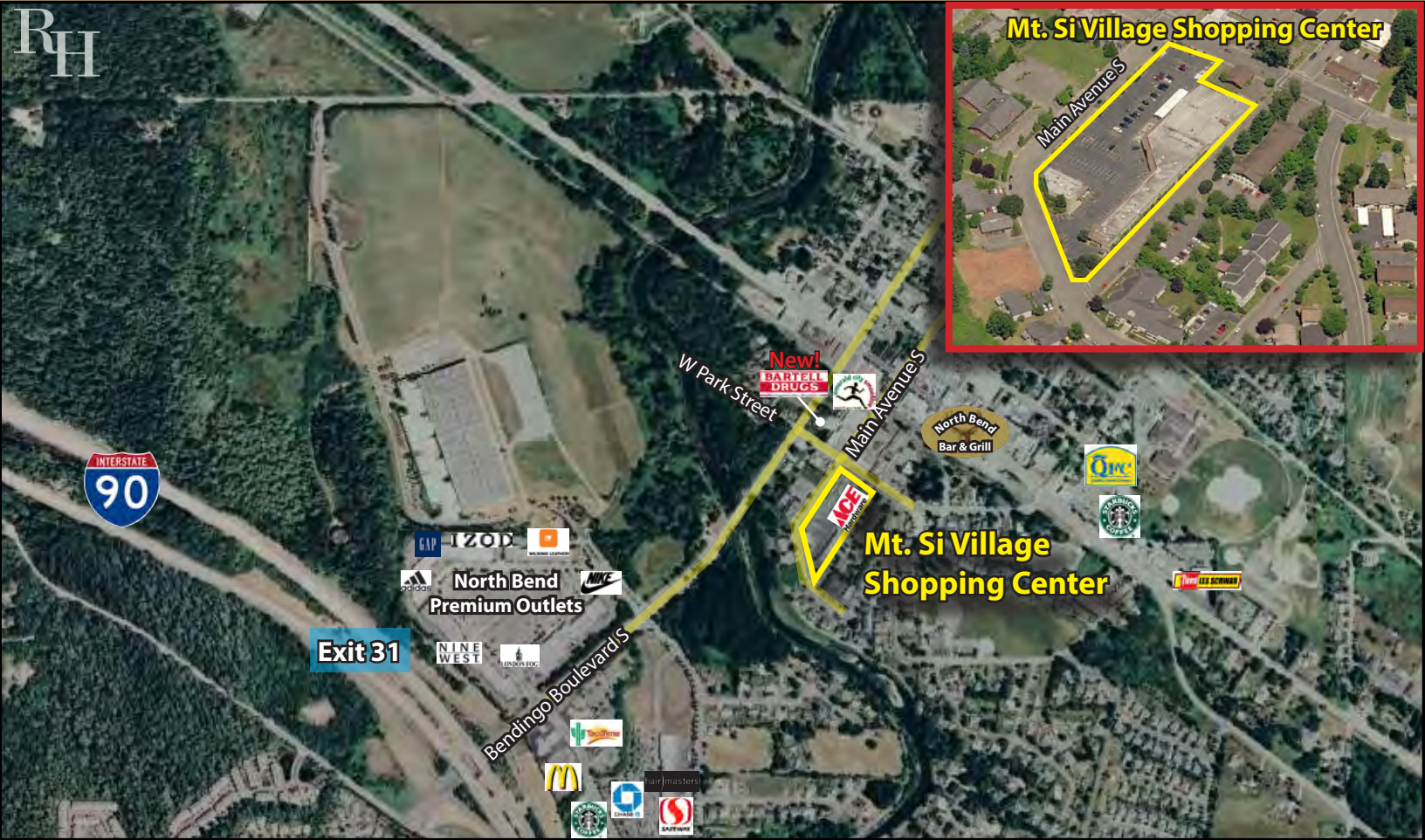
Rosen~Harbottle Commercial Real Estate | P.O. Box 5003 Bellevue, WA 98009-5003  
phone: (425) 454-3030 fax: (425) 454-6705 | [www.rosenharbottle.com](http://www.rosenharbottle.com)

The information provided has been obtained from sources believed reliable. While we do not doubt its accuracy, we have not verified and make no guarantee, warranty or representation about it. It is your sole responsibility to independently confirm its accuracy and completeness.



# Mt. Si Village Shopping Center

330 Main Avenue S, North Bend, WA 98045



For more information, contact:

ROSEN~HARBOTTLE  
COMMERCIAL REAL ESTATE

**Caleb Farnworth, CCIM**  
(425) 289-2235  
calebf@rosenharbottle.com

**Jerry Harbottle**  
(425) 289-2216  
jerry@rosenharbottle.com

www.rosenharbottle.com

Rosen~Harbottle Commercial Real Estate | P.O. Box 5003 Bellevue, WA 98009-5003  
phone: (425) 454-3030 fax: (425) 454-6705 | www.rosenharbottle.com

The information provided has been obtained from sources believed reliable. While we do not doubt its accuracy, we have not verified and make no guarantee, warranty or representation about it. It is your sole responsibility to independently confirm its accuracy and completeness.