

# Airport Commerce Center

11604 - 11710 AIRPORT ROAD, EVERETT, WA 98204



## OFFICE/WHSE ON AIRPORT RD

1,589 SF - 16,583 SF Available

\$1.35/SF Ofc | \$0.65/SF Whse, NNN



For more information, contact:

**ROSEN~HARBOTTLE  
COMMERCIAL REAL ESTATE**

**Grant Rubenstein**

(425) 289-2220

grant@rosenharbottle.com

**Caleb Farnworth, CCIM**

(425) 289-2235

calebf@rosenharbottle.com

www.rosenharbottle.com

### FEATURES:

- Rare Flex Space Available
- Grade-Level & Dock-High Loading
- Glass Storefronts
- Quick Access to Paine Field, Hwy 99, and I-5
- 22' Clear Height
- Sprinklered Buildings

Rosen~Harbottle Commercial Real Estate | P.O. Box 5003 Bellevue, WA 98009-5003  
phone: (425) 454-3030 fax: (425) 454-6705 | www.rosenharbottle.com

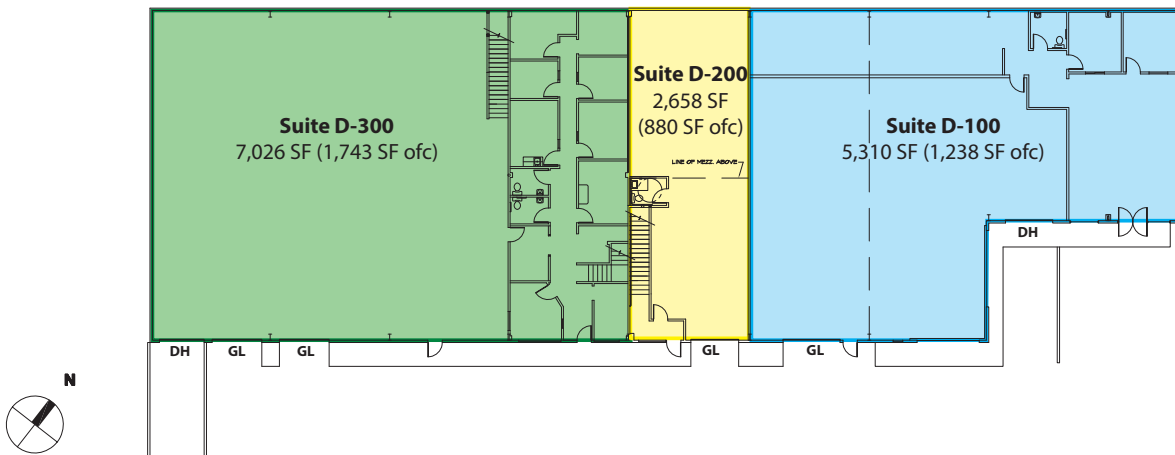
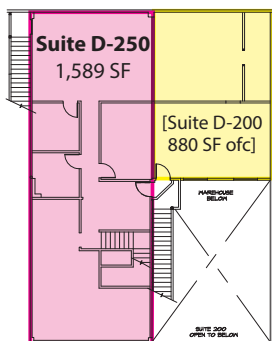
The information provided has been obtained from sources believed reliable. While we do not doubt its accuracy, we have not verified and make no guarantee, warranty or representation about it. It is your sole responsibility to independently confirm its accuracy and completeness.

# Airport Commerce Center

11604 - 11710 AIRPORT ROAD, EVERETT, WA 98204

## Building D

Suite	Total SF	Rent/ Mo	NNN	Total/ Mo
Bldg D	16,583 SF (5,450 SF ofc)	\$12,902	\$4,485	\$17,387
Notes: Full building available. Space includes 2,469 SF mezzanine office. 4 GL & 2 DH loading doors				
D-100	5,310 SF (1,238 SF ofc)	\$4,318	\$1,434	\$5,752
Notes: Endcap space with visibility to Airport Road. 1 DH & 1 GL.				
D-200	2,658 SF (880 SF ofc)	\$2,036	\$718	\$2,754
Notes: Warehouse with 1 GL & 2nd floor office. (\$1.00/SF for 880 SF office)				
D-250	1,589 SF	\$1,033	\$429	\$1,462
Notes: 2nd Floor office. 2 POs, reception, conference room, open area and natural light. (\$0.65/SF)				
D-300	7,026 SF (1,743 SF ofc)	\$5,787	\$1,897	\$7,684
Notes: 2 GLs & 1 DH loading doors				



Rosen~Harbottle Commercial Real Estate | P.O. Box 5003 Bellevue, WA 98009-5003  
 phone: (425) 454-3030 fax: (425) 454-6705 | [www.rosenharbottle.com](http://www.rosenharbottle.com)

The information provided has been obtained from sources believed reliable. While we do not doubt its accuracy, we have not verified and make no guarantee, warranty or representation about it. It is your sole responsibility to independently confirm its accuracy and completeness.

# Airport Commerce Center

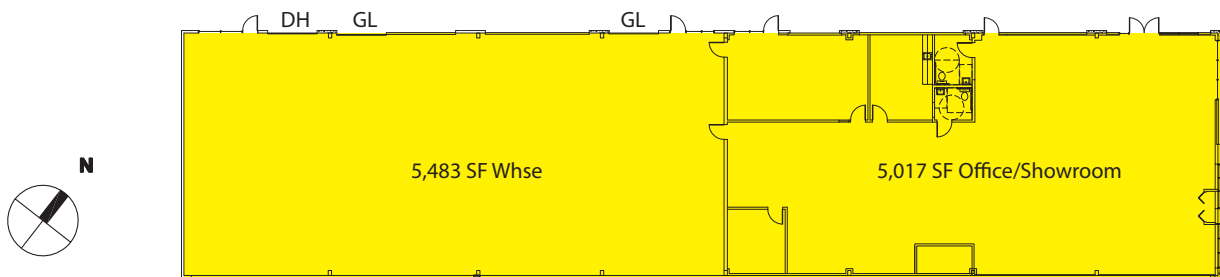
11604 - 11710 AIRPORT ROAD, EVERETT, WA 98204

## Building E

Suite	Total SF	Rent/ Mo	NNN	Total/ Mo
-------	----------	----------	-----	-----------

Bldg E	10,500 SF (5,017 SF ofc)	\$10,337	\$2,835	\$13,172
--------	--------------------------	----------	---------	----------

Notes: Full building available. Space includes 5,017 SF office/showroom, 2 GL & 1 DH loading doors



## Building F

Suite	Total SF	Rent/ Mo	NNN	Total/ Mo
-------	----------	----------	-----	-----------

F-7/F-400	5,606 SF (1,016 SF ofc)	\$4,355	\$1,514	\$5,868
-----------	-------------------------	---------	---------	---------

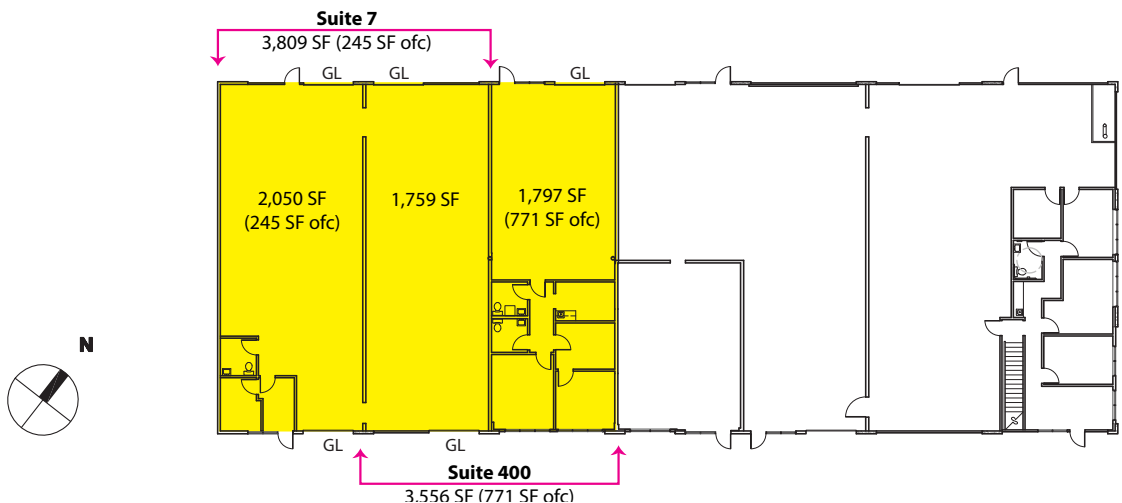
Notes: Suites F-7 & F-400 are contiguous for 5,606 SF (1,016 SF office) total.

F-7	3,809 SF (245 SF ofc)	\$2,647	\$1,028	\$3,675
-----	-----------------------	---------	---------	---------

Notes: Open warehouse with split bays, cross loading 4 GLs, 1 RR and small office.

F-400	3,556 SF (771 SF ofc)	\$2,851	\$960	\$3,811
-------	-----------------------	---------	-------	---------

Notes: Open warehouse with 3 GLs and cross loading. Office includes 2 POs, 2 RRS, and kitchenette.

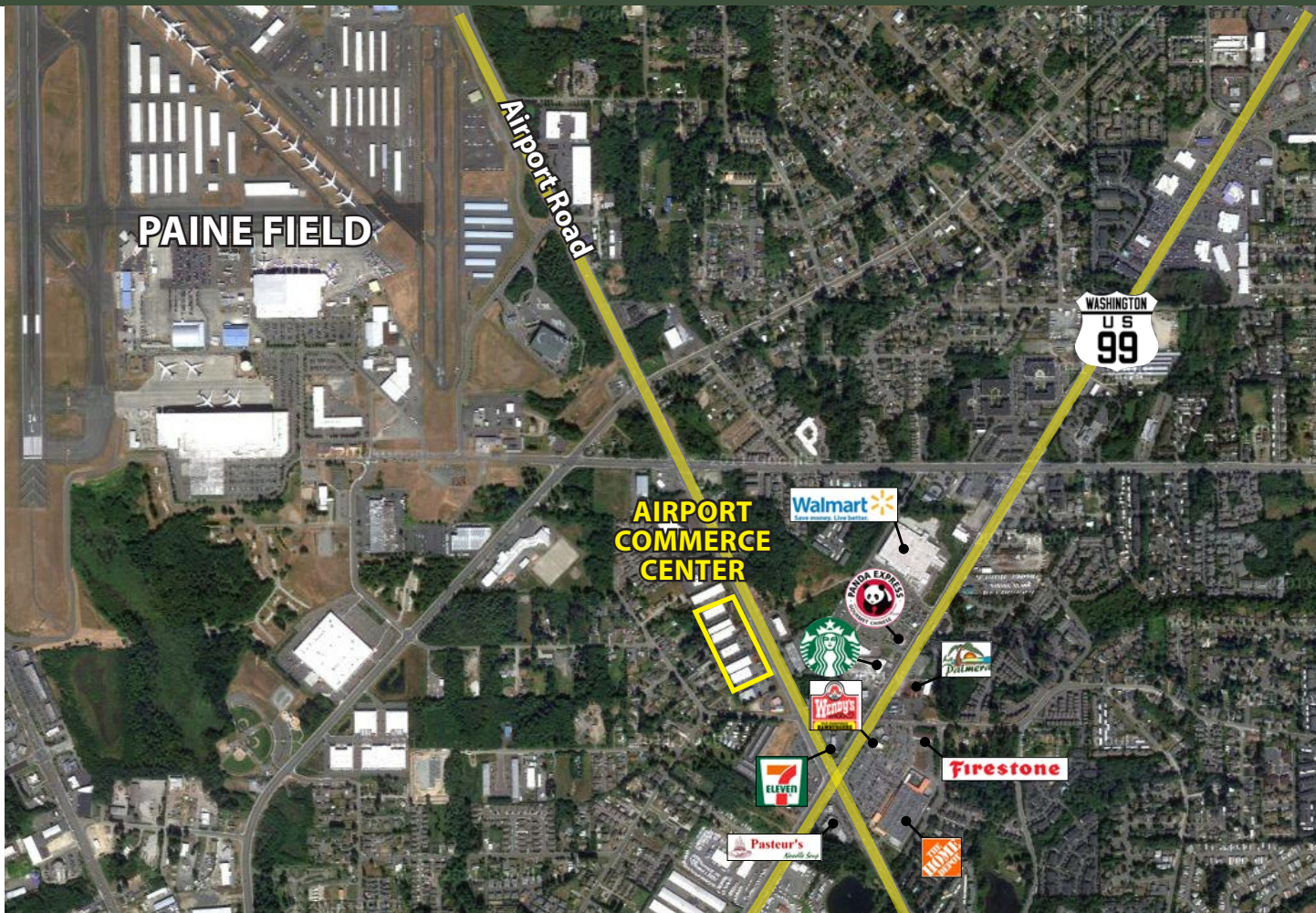


Rosen~Harbottle Commercial Real Estate | P.O. Box 5003 Bellevue, WA 98009-5003  
 phone: (425) 454-3030 fax: (425) 454-6705 | [www.rosenharbottle.com](http://www.rosenharbottle.com)

The information provided has been obtained from sources believed reliable. While we do not doubt its accuracy, we have not verified and make no guarantee, warranty or representation about it. It is your sole responsibility to independently confirm its accuracy and completeness.

# Airport Commerce Center

11604 - 11710 AIRPORT ROAD, EVERETT, WA 98204

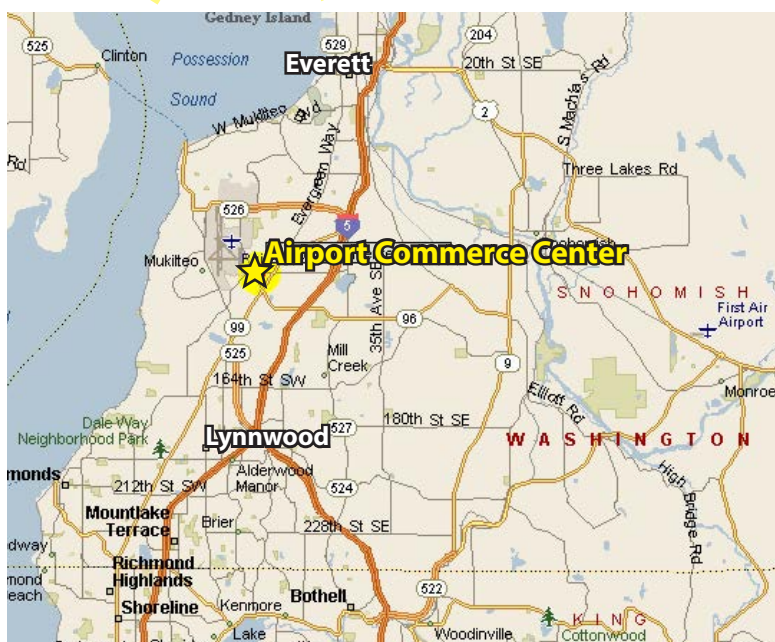


For more information, contact:

## ROSEN~HARBOTTLE COMMERCIAL REAL ESTATE

**Grant Rubenstein**  
(425) 289-2220  
grant@rosenharbottle.com

**Caleb Farnworth, CCIM**  
(425) 289-2235  
calebf@rosenharbottle.com  
www.rosenharbottle.com



Rosen~Harbottle Commercial Real Estate | P.O. Box 5003 Bellevue, WA 98009-5003  
phone: (425) 454-3030 fax: (425) 454-6705 | www.rosenharbottle.com

The information provided has been obtained from sources believed reliable. While we do not doubt its accuracy, we have not verified and make no guarantee, warranty or representation about it. It is your sole responsibility to independently confirm its accuracy and completeness.