

# RH NORTH CREEK BUSINESS CENTER

11720 North Creek Parkway North | Bothell, WA



## FLEX, LAB, OR WAREHOUSE SPACE

**18,868 SF**

**Potentially Divisible**

### SUITE DETAILS:

- Currently Environmental Testing Facility
  - HVAC, Plumbing Floor Drains Throughout
  - Roof Penetrations for Fume Hoods Throughout
- 1 Dock and 5 Grade Level Loading Doors
- Heavy Electrical Power
  - 600amps of 277/480volt 3Phase
  - 800amps of 120/208volt 3Phase fed from 480v service
- Clear Height Up to 24'
- Men's and Women's Showers

### LOCATION FEATURES:

- Corporate Campus
- On-Site Deli and Childcare
- Nearby Amenities: Restaurants, Retail Shops, Food Trucks, Corporate Marriott, Walking Trails, Sports Fields, & Fitness Center
- Quick Access to I-405, SR-522 & Downtown Bothell

**Caleb Farnworth, CCIM**

425.289.2235

calebf@rosenharbottle.com

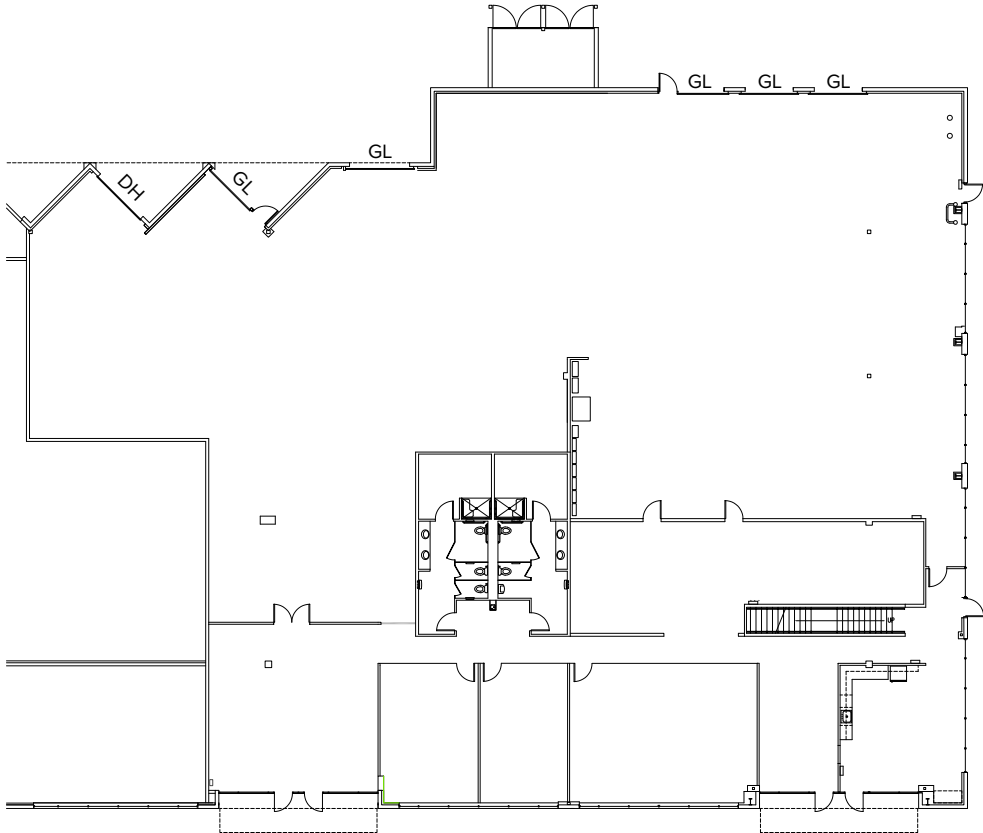
**Brian Stewart**

425.289.2222

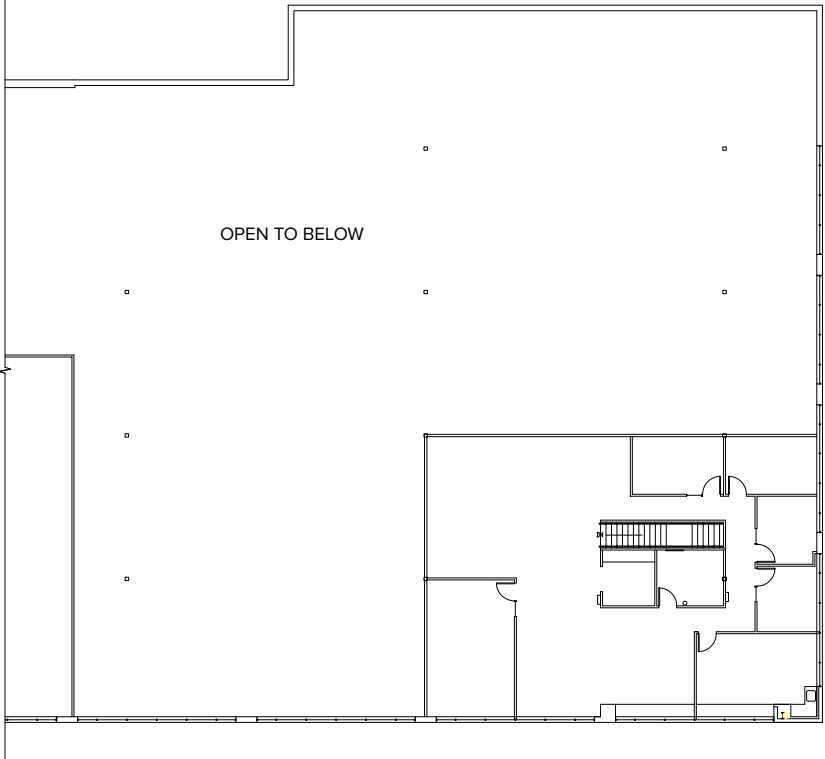
brians@rosenharbottle.com



# SAMPLE FLOOR PLAN

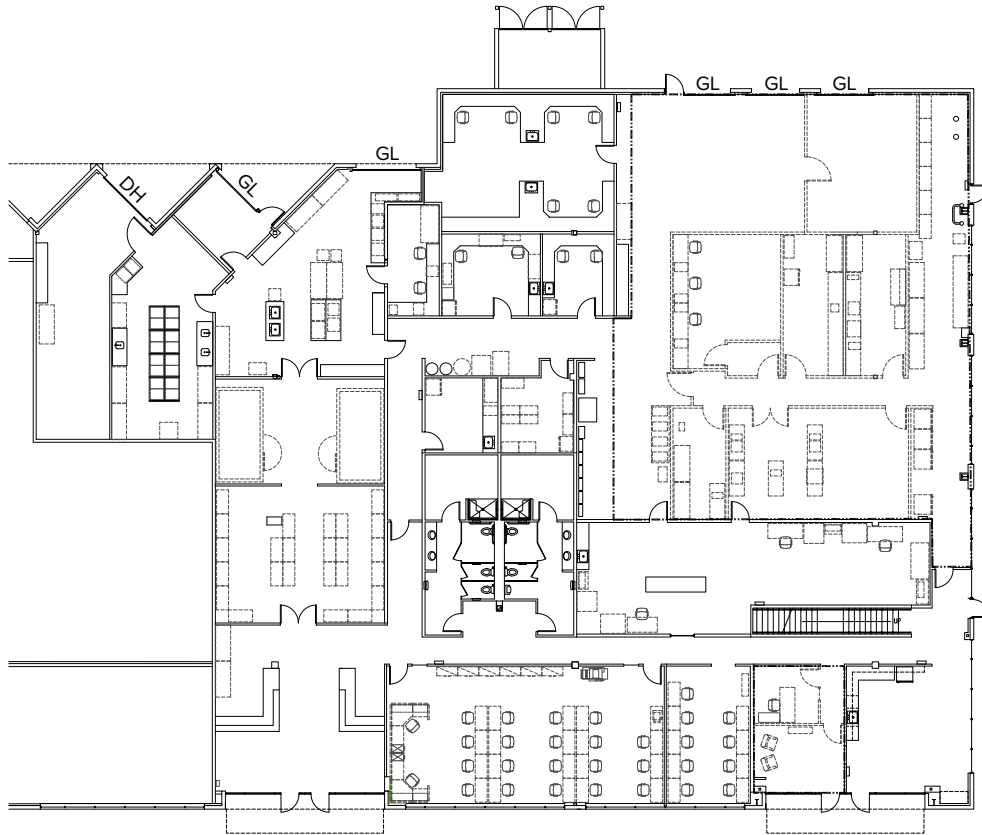


**FIRST FLOOR**  
**15,790 SF**

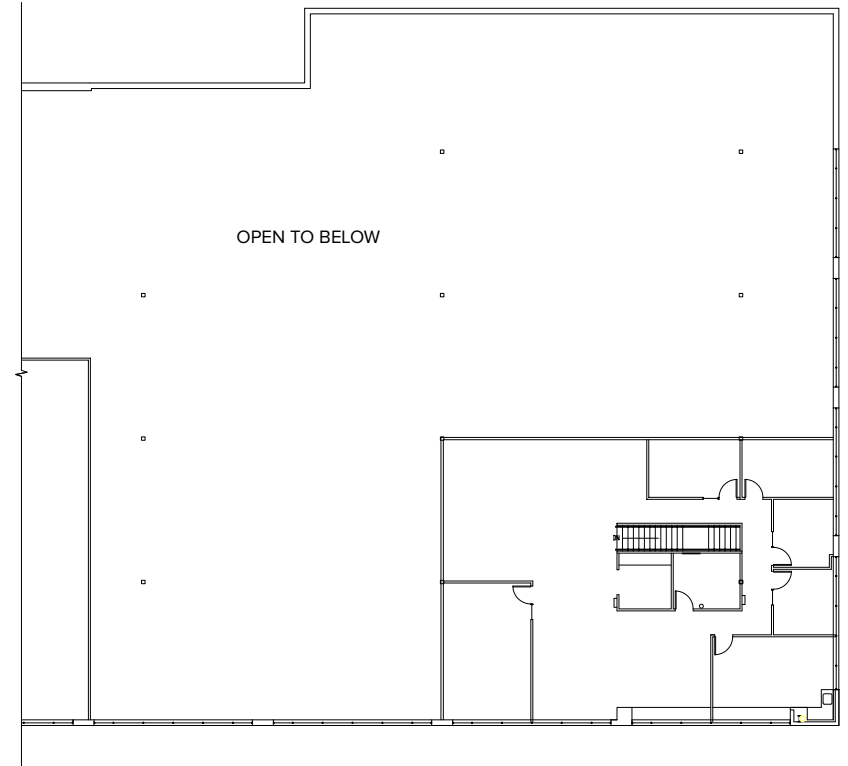


**SECOND FLOOR**  
**3,078 SF**

# AS-IS FLOOR PLAN



**FIRST FLOOR**  
15,790 SF



**SECOND FLOOR**  
3,078 SF

# CORPORATE NEIGHBORS



## LEGEND:

- 01 AT&T
- 02 RH North Creek-Bldg 7
- 03 General Dynamics
- 04 Google
- 05 AT&T
- 06 United Healthcare Services
- 07 Progressive, Banner Bank
- 08 HUB International
- 09 Verafore
- 10 State Farm
- 11 Talentwise
- 12 Puget Sound Energy
- 13 Tetra Tech
- 14 T-Mobile

## DRIVE TIME:

- From Redmond: 20 Minutes
- From Kirkland: 14 Minutes
- From Bellevue: 15 Minutes
- From Seattle: 30 Minutes