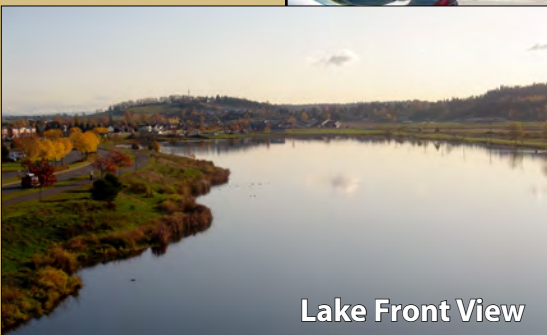


# LAKE TYE BUILDING

14090 Fryeland Boulevard, Monroe, WA 98272

**LAST  
Spaces!**



Lake Front View

## Highest Quality Building in Monroe

### \$14.50/SF, NNN

### 835 SF - 2,164 SF Available

#### FEATURES:

- Third Floor Medical Space with Plumbing
- Flexible Suite Sizes Ready for Improvements
- Lake Front with Views
- Two Floors of Office over Ground-Floor Retail
- 4.5 / 1,000 Parking Ratio - Free
- \$8.11/ SF Estimated NNN Expenses

For more information, contact:

ROSEN~HARBOTTLE  
COMMERCIAL REAL ESTATE

**Caleb Farnworth, CCIM**  
(425) 289-2235  
calebf@rosenharbottle.com

www.rosenharbottle.com

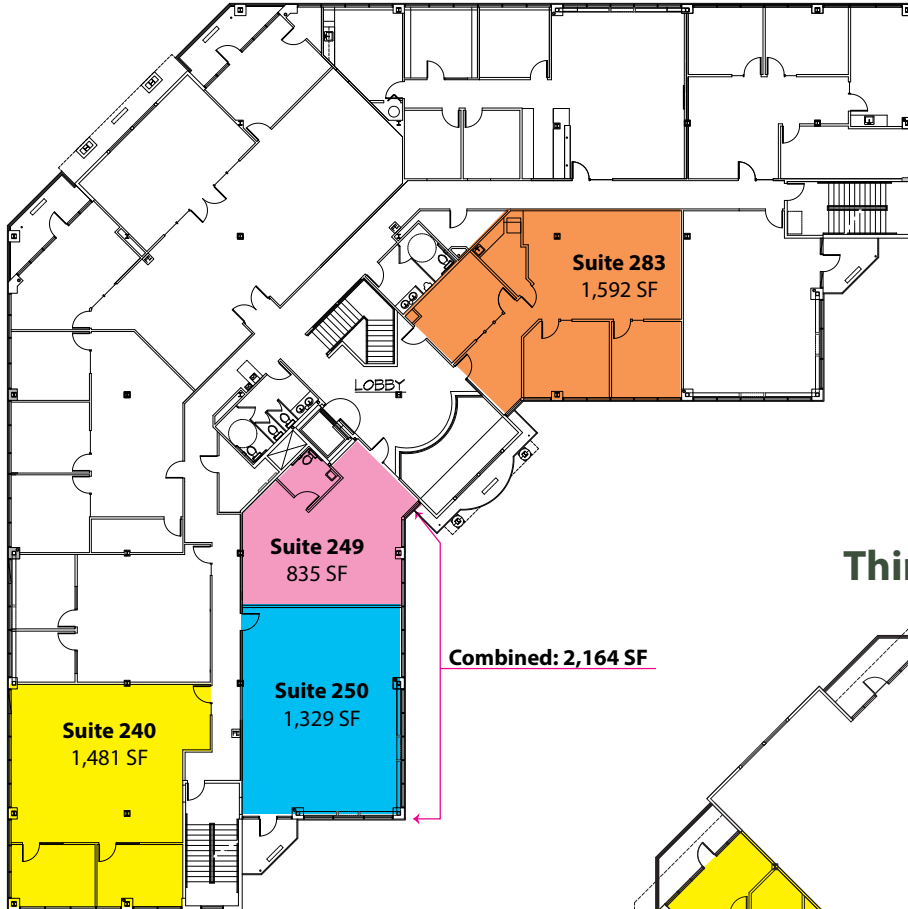
Rosen~Harbottle Commercial Real Estate | P.O. Box 5003 Bellevue, WA 98009-5003  
phone: (425) 454-3030 fax: (425) 454-6705 | www.rosenharbottle.com

The information provided has been obtained from sources believed reliable. While we do not doubt its accuracy, we have not verified and make no guarantee, warranty or representation about it. It is your sole responsibility to independently confirm its accuracy and completeness.

# LAKE TYE BUILDING

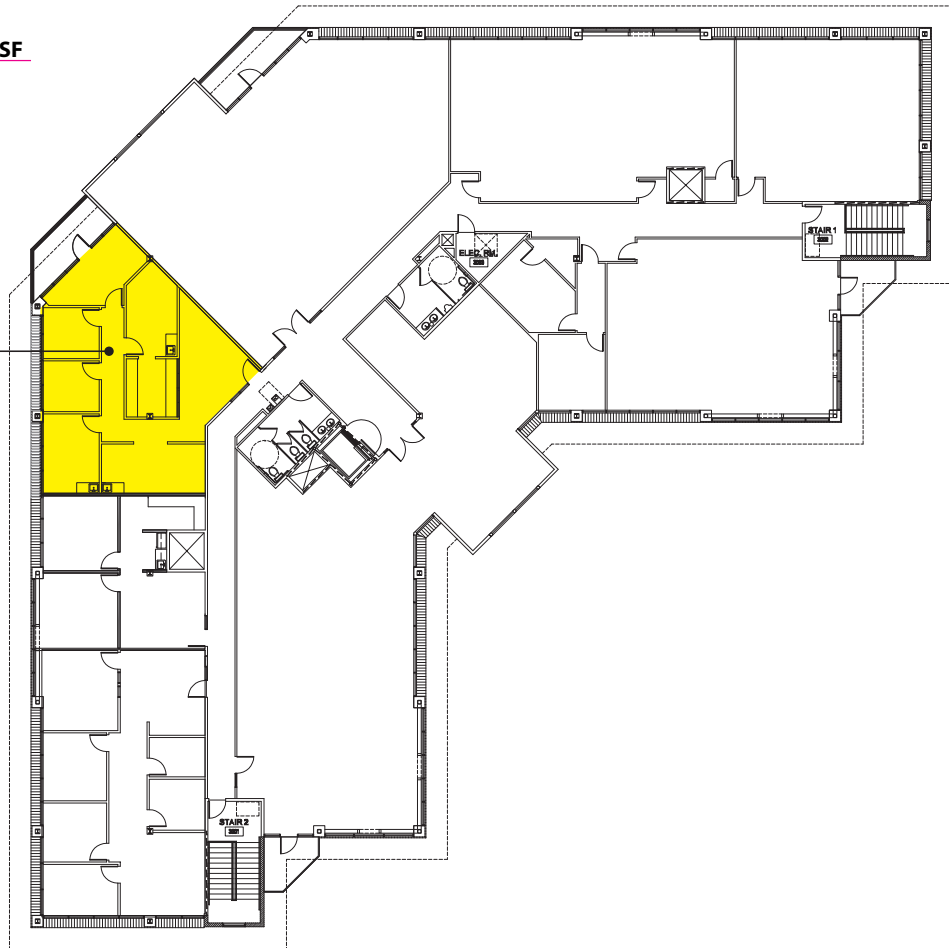
14090 Fryeland Boulevard, Monroe, WA 98272

## Second Floor -Office



## Third Floor -Office

Suite 342  
1,633 SF  
\$14.50/SF

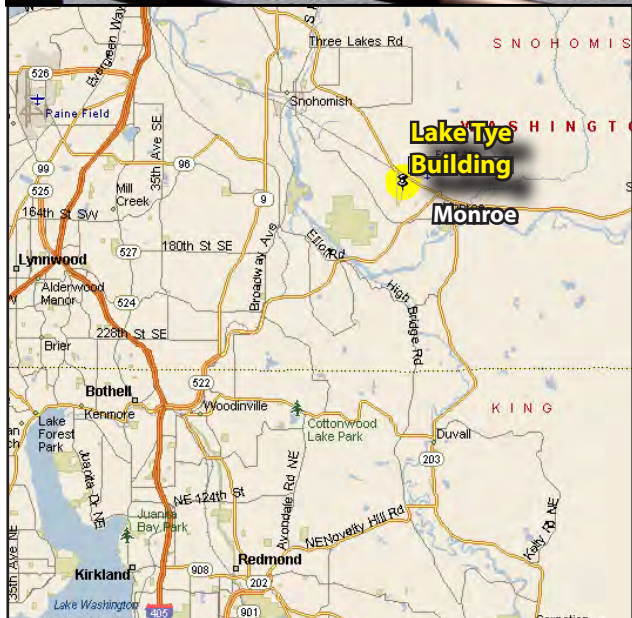


Rosen~Harbottle Commercial Real Estate | P.O. Box 5003 Bellevue, WA 98009-5003  
phone: (425) 454-3030 fax: (425) 454-6705 | [www.rosenharbottle.com](http://www.rosenharbottle.com)

The information provided has been obtained from sources believed reliable. While we do not doubt its accuracy, we have not verified and make no guarantee, warranty or representation about it. It is your sole responsibility to independently confirm its accuracy and completeness.

# LAKE TYE BUILDING

14090 Fryeland Boulevard, Monroe, WA 98272



## Rosen | Harbottle

### Commercial Real Estate

P.O. Box 5003, Bellevue, WA 98009-5003

(425) 454-3030 Phone (425) 454-6705 Fax

[www.rosenharbottle.com](http://www.rosenharbottle.com)



Rosen~Harbottle Commercial Real Estate | P.O. Box 5003 Bellevue, WA 98009-5003  
phone: (425) 454-3030 fax: (425) 454-6705 | [www.rosenharbottle.com](http://www.rosenharbottle.com)

The information provided has been obtained from sources believed reliable. While we do not doubt its accuracy, we have not verified and make no guarantee, warranty or representation about it. It is your sole responsibility to independently confirm its accuracy and completeness.