



FOR LEASE

# Fountain Plaza I & II

501 & 505 S 336TH ST, FEDERAL WAY, WA



## Class A Office Space in West Campus Federal Way

**WILL FRAME**

253.722.1412

[will.frame@kidder.com](mailto:will.frame@kidder.com)

**DREW FRAME**

253.722.1433

[drew.frame@kidder.com](mailto:drew.frame@kidder.com)

**Kidder  
Mathews**

This information supplied herein is from sources we deem reliable. It is provided without any representation, warranty, or guarantee, expressed or implied as to its accuracy. Prospective Buyer or Tenant should conduct an independent investigation and verification of all matters deemed to be material, including, but not limited to, statements of income and expenses. Consult your attorney, accountant, or other professional advisor.

[KIDDER.COM](http://KIDDER.COM)

FOR LEASE

# Fountain Plaza I & II

501 & 505 S 336TH ST, FEDERAL WAY, WA



## Class "A" Office Space

**BUILDING I** 2,646 - 4,736 SF

**BUILDING II** 1,149 - 3,856 SF

**RATE** \$24.00 PSF, per year, full service

**PARKING** surface parking at 4.7/1,000

**RENOVATIONS** 2018 renovations of lobby, common area, restrooms and building exterior

**LOCATED** on the corner of 336th & 1st, the hub of West Campus Office

**ACCESS** easy access to Hwy 18, Hwy 99 and I-5

**WILL FRAME**

253.722.1412

[will.frame@kidder.com](mailto:will.frame@kidder.com)

**DREW FRAME**

253.722.1433

[drew.frame@kidder.com](mailto:drew.frame@kidder.com)

**KIDDER.COM**

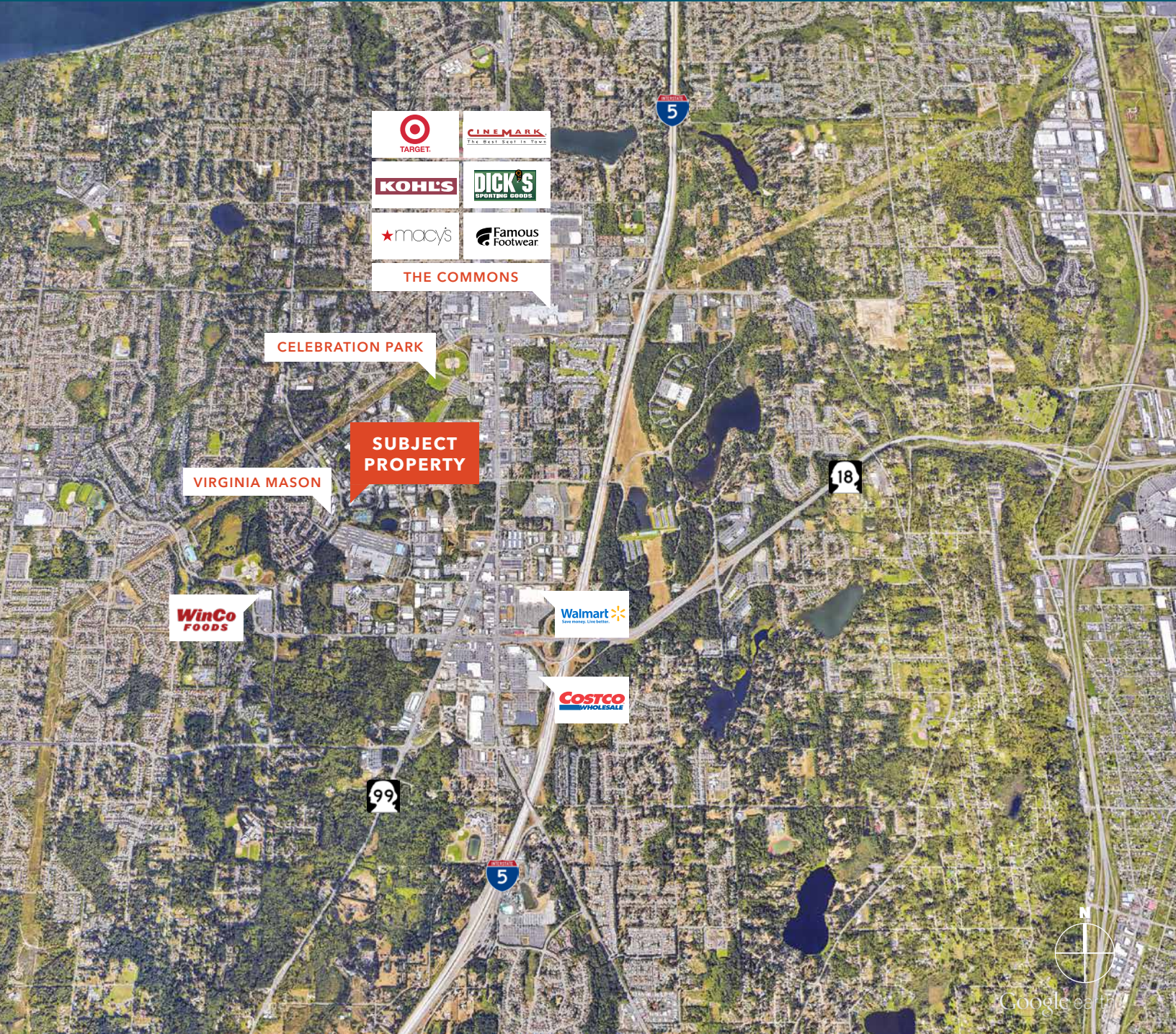
This information supplied herein is from sources we deem reliable. It is provided without any representation, warranty, or guarantee, expressed or implied as to its accuracy. Prospective Buyer or Tenant should conduct an independent investigation and verification of all matters deemed to be material, including, but not limited to, statements of income and expenses. Consult your attorney, accountant, or other professional advisor.

**km** Kidder Mathews

FOR LEASE

# Fountain Plaza I & II

501 & 505 S 336TH ST, FEDERAL WAY, WA



**WILL FRAME**  
253.722.1412  
[will.frame@kidder.com](mailto:will.frame@kidder.com)

**DREW FRAME**  
253.722.1433  
[drew.frame@kidder.com](mailto:drew.frame@kidder.com)

**KIDDER.COM**

This information supplied herein is from sources we deem reliable. It is provided without any representation, warranty, or guarantee, expressed or implied as to its accuracy. Prospective Buyer or Tenant should conduct an independent investigation and verification of all matters deemed to be material, including, but not limited to, statements of income and expenses. Consult your attorney, accountant, or other professional advisor.

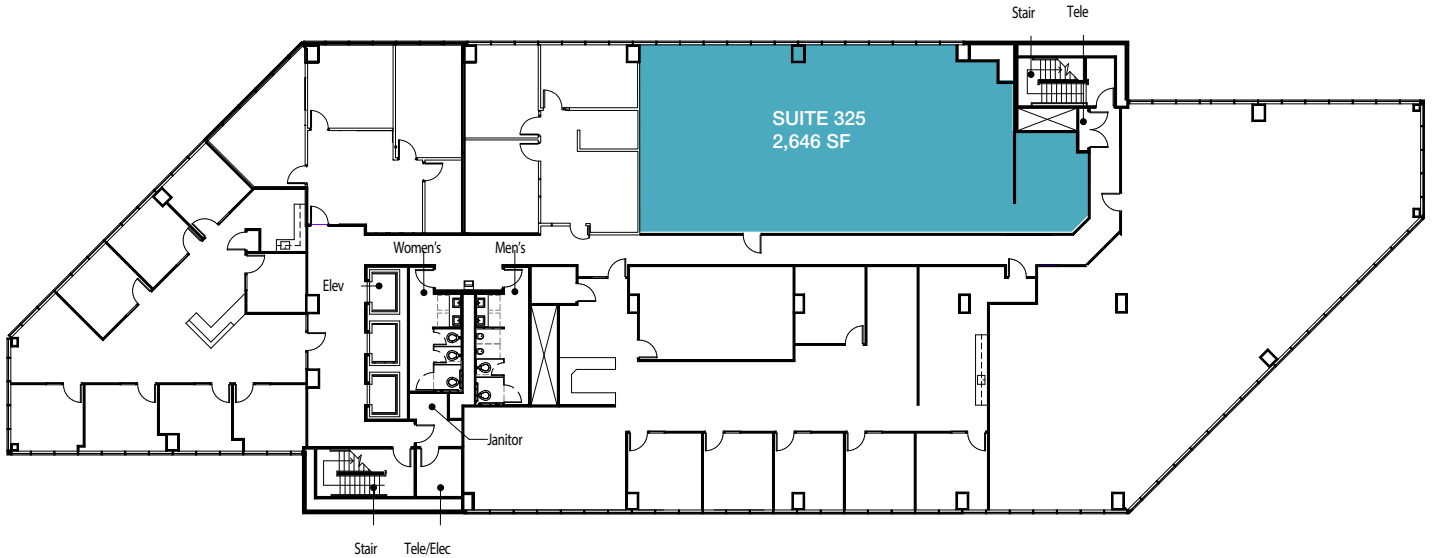


**FOR LEASE**

# Fountain Plaza I & II

501 & 505 S 336TH ST, FEDERAL WAY, WA

## Fountain Plaza I - Third Floor



### BUILDING I AVAILABLE SPACE

Suite	SF	Features	Available
325	2,646 SF	3rd floor location	NOW
500	4,736 SF	5th floor location	09.2020

**WILL FRAME**

253.722.1412

[will.frame@kidder.com](mailto:will.frame@kidder.com)

**DREW FRAME**

253.722.1433

[drew.frame@kidder.com](mailto:drew.frame@kidder.com)

**KIDDER.COM**

This information supplied herein is from sources we deem reliable. It is provided without any representation, warranty, or guarantee, expressed or implied as to its accuracy. Prospective Buyer or Tenant should conduct an independent investigation and verification of all matters deemed to be material, including, but not limited to, statements of income and expenses. Consult your attorney, accountant, or other professional advisor.

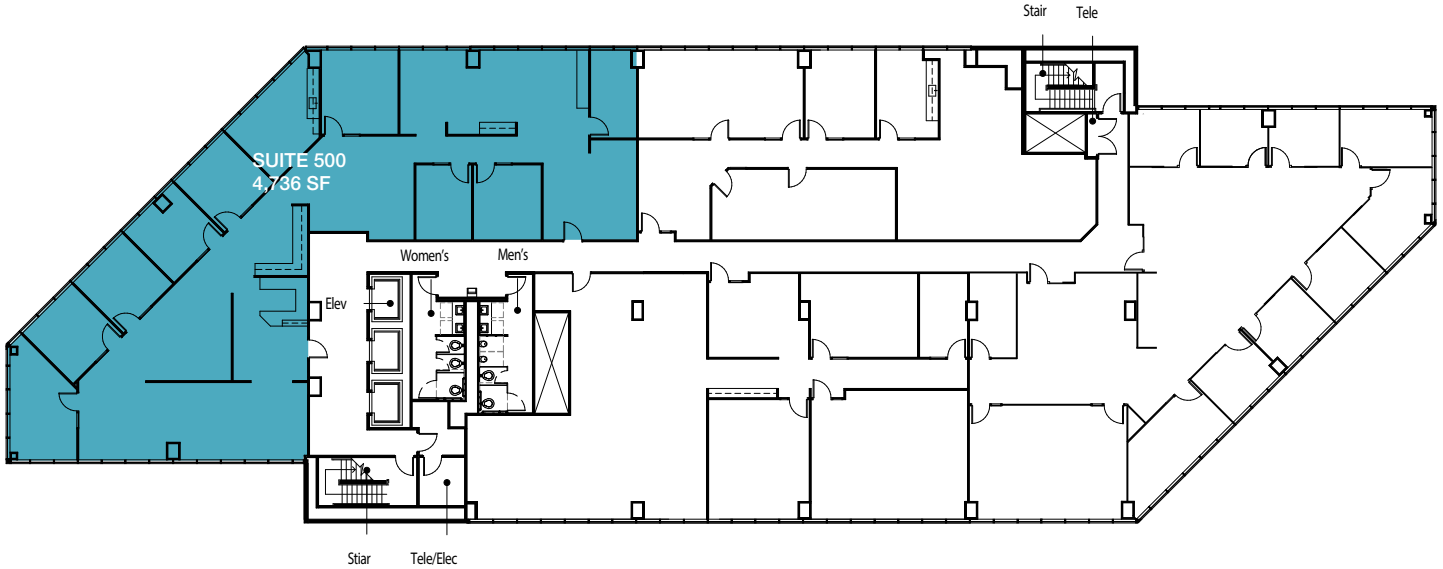


**FOR LEASE**

# Fountain Plaza I & II

501 & 505 S 336TH ST, FEDERAL WAY, WA

## Fountain Plaza I - Fifth Floor



### BUILDING I AVAILABLE SPACE

Suite	SF	Features	Available
325	2,646 SF	3rd floor location	NOW
500	4,736 SF	5th floor location	09.2020

**WILL FRAME**  
253.722.1412  
will.frame@kidder.com

**DREW FRAME**  
253.722.1433  
drew.frame@kidder.com

**KIDDER.COM**

This information supplied herein is from sources we deem reliable. It is provided without any representation, warranty, or guarantee, expressed or implied as to its accuracy. Prospective Buyer or Tenant should conduct an independent investigation and verification of all matters deemed to be material, including, but not limited to, statements of income and expenses. Consult your attorney, accountant, or other professional advisor.

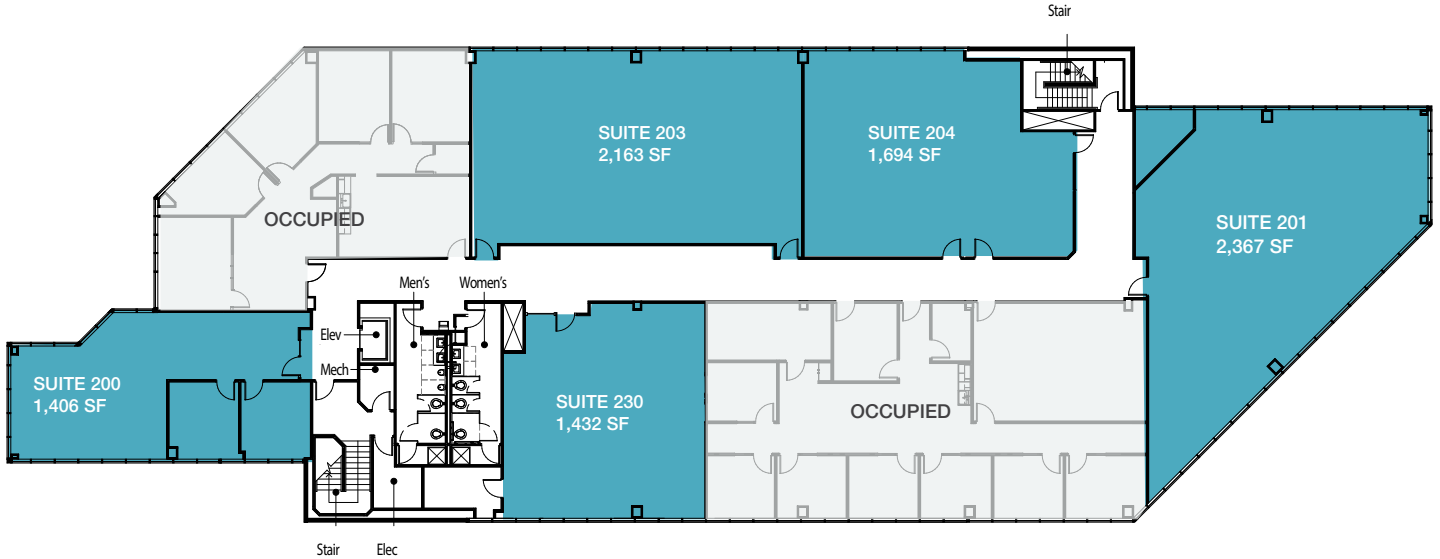


FOR LEASE

# Fountain Plaza I & II

501 & 505 S 336TH ST, FEDERAL WAY, WA

## Fountain Plaza II - Second Floor



### BUILDING II AVAILABLE SPACE

Suite	SF	Features	Available
200	1,406 SF	2nd floor location	NOW
201	2,367 SF	2nd floor location	NOW
203	2,163 SF	2nd floor location	NOW
204	1,694 SF	2nd floor location	NOW
230	1,432 SF	2nd floor location	NOW

#### WILL FRAME

253.722.1412

[will.frame@kidder.com](mailto:will.frame@kidder.com)

#### DREW FRAME

253.722.1433

[drew.frame@kidder.com](mailto:drew.frame@kidder.com)

[KIDDER.COM](http://KIDDER.COM)

This information supplied herein is from sources we deem reliable. It is provided without any representation, warranty, or guarantee, expressed or implied as to its accuracy. Prospective Buyer or Tenant should conduct an independent investigation and verification of all matters deemed to be material, including, but not limited to, statements of income and expenses. Consult your attorney, accountant, or other professional advisor.

