

BONNEY LAKE VILLAGE SHOPPING CENTER

21107-21291 State Route 410 E, Bonney Lake, WA 98391



SAFEWAY ANCHORED RETAIL CENTER

1,800 SF - 10,291 SF Available

\$16.00/SF - \$24.00/SF, NNN

FEATURES:

- Frontage on SR 410
- Neighboring Anchors: Costco (Summer 2018), Walmart, Fred Meyer, Lowe's & Home Depot
- National Tenant Mix: Ben Franklin, PetPros, Round Table, Goodwill, Great Clips, Burger King & Taco Bell
- 44,000+ Cars per Day on SR 410
- Outdoor Daycare/Play Area Available (pg 3)

For more information, contact:

ROSEN~HARBOTTLE COMMERCIAL REAL ESTATE

Jack Rosen

(425) 289-2221

jack@rosenharbottle.com

Brian Stewart

(425) 289-2222

brians@rosenharbottle.com

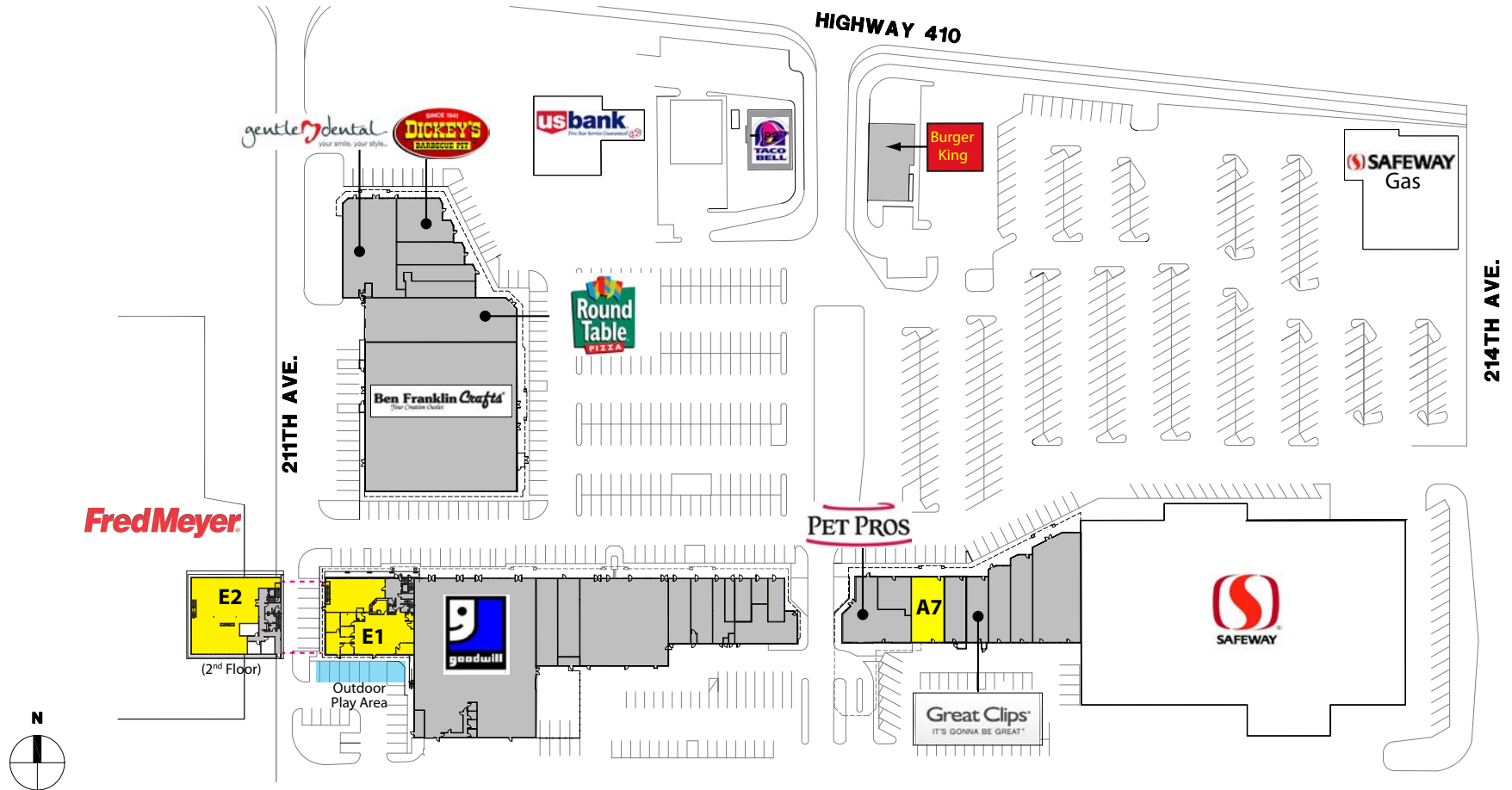
Rosen~Harbottle Commercial Real Estate | P.O. Box 5003 Bellevue, WA 98009-5003
phone: (425) 454-3030 fax: (425) 454-6705 | www.rosenharbottle.com

The information provided has been obtained from sources believed reliable. While we do not doubt its accuracy, we have not verified and make no guarantee, warranty or representation about it. It is your sole responsibility to independently confirm its accuracy and completeness.

www.rosenharbottle.com

AVAILABLE SPACE

SUITE	SQUARE FEET	RATE
A-7	1,800 SF	\$24.00/SF
E-1	3,530 SF - 5,134 SF	\$16.00/SF
E-2	5,157 SF	\$16.00/SF
E-1/E-2	10,291 SF	\$16.00/SF



The information provided has been obtained from sources believed reliable. While we do not doubt its accuracy, we have not verified and make no guarantee, warranty or representation about it. It is your sole responsibility to independently confirm its accuracy and completeness.

ENDCAP - SUITES E-1 & E-2

UP TO 10,291 SF AVAILABLE

Suite	SF	Rent/SF
E1	3,530 SF - 5,134 SF	\$16.00/SF
E2	5,157 SF	\$16.00/SF
Contiguous	10,291 SF	\$16.00/SF

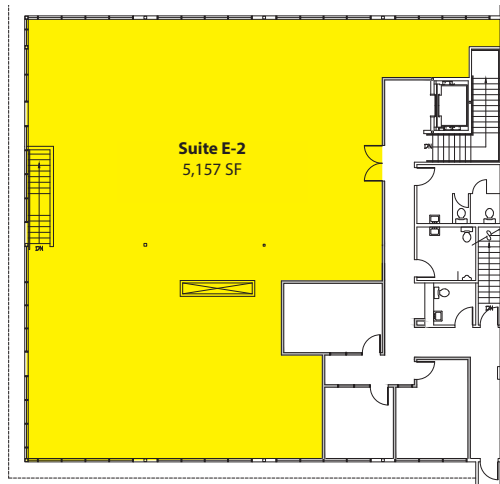
IDEAL USES:

- Office, Medical, Daycare, Tutoring, Martial Arts

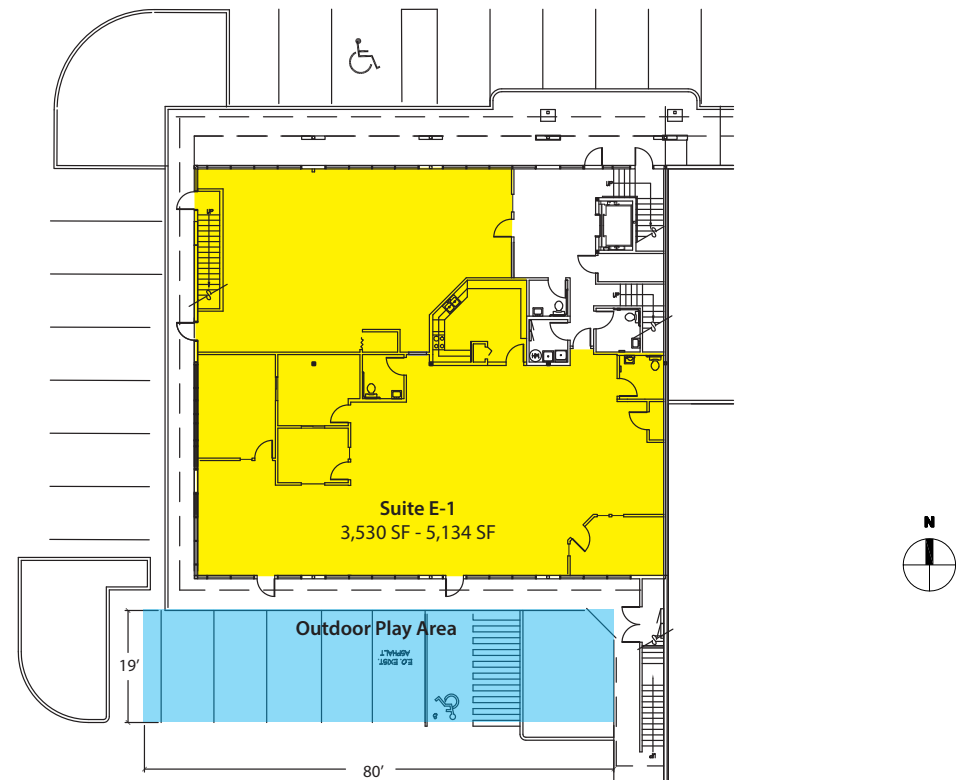
FEATURES:

- Recently Renovated Space
- Great Natural Light
- New Carpet & Paint
- Sprinklered
- Updated Kitchenette
- Outdoor Play Area Available

Suite E2 - Second Floor



Suite E1 - First Floor



RETAIL TRADE MAP



For more information, contact:

ROSEN~HARBOTTLE COMMERCIAL REAL ESTATE

Jack Rosen

(425) 289-2221

jack@rosenharbottle.com

Brian Stewart

(425) 289-2222

brians@rosenharbottle.com

www.rosenharbottle.com