

RETAIL/OFFICE  
LEASE



# ALDERWOOD EAST SHOPPING CENTER

18910 - 18930 28th Ave W | Lynnwood, WA

Jack Rosen

425.289.2221

jack@rosenharbottle.com

425.454.3030  
rosenharbottle.com

Grant Rubenstein

425.289.2220

grant@rosenharbottle.com

PO Box 5003  
Bellevue, WA 98009 - 5003

# HIGH-EXPOSURE OFFICE & RETAIL SPACES ACROSS FROM ALDERWOOD MALL

**1,075 SF - 1,550 SF Available**

**\$40.00/SF, Gross**

## PROPERTY FEATURES:

- High Exposure Frontage on Alderwood Mall Blvd Near I-5
- Heavy Foot Traffic Location
- 24 Hour Fitness Anchored Center
- Other Tenants Include Daiso, Plato's Closet, Chop It Up Barbershop, & DXL
- 218,969 Cars per Day on I-5
- 21,026+ Cars per Day on 28th Avenue

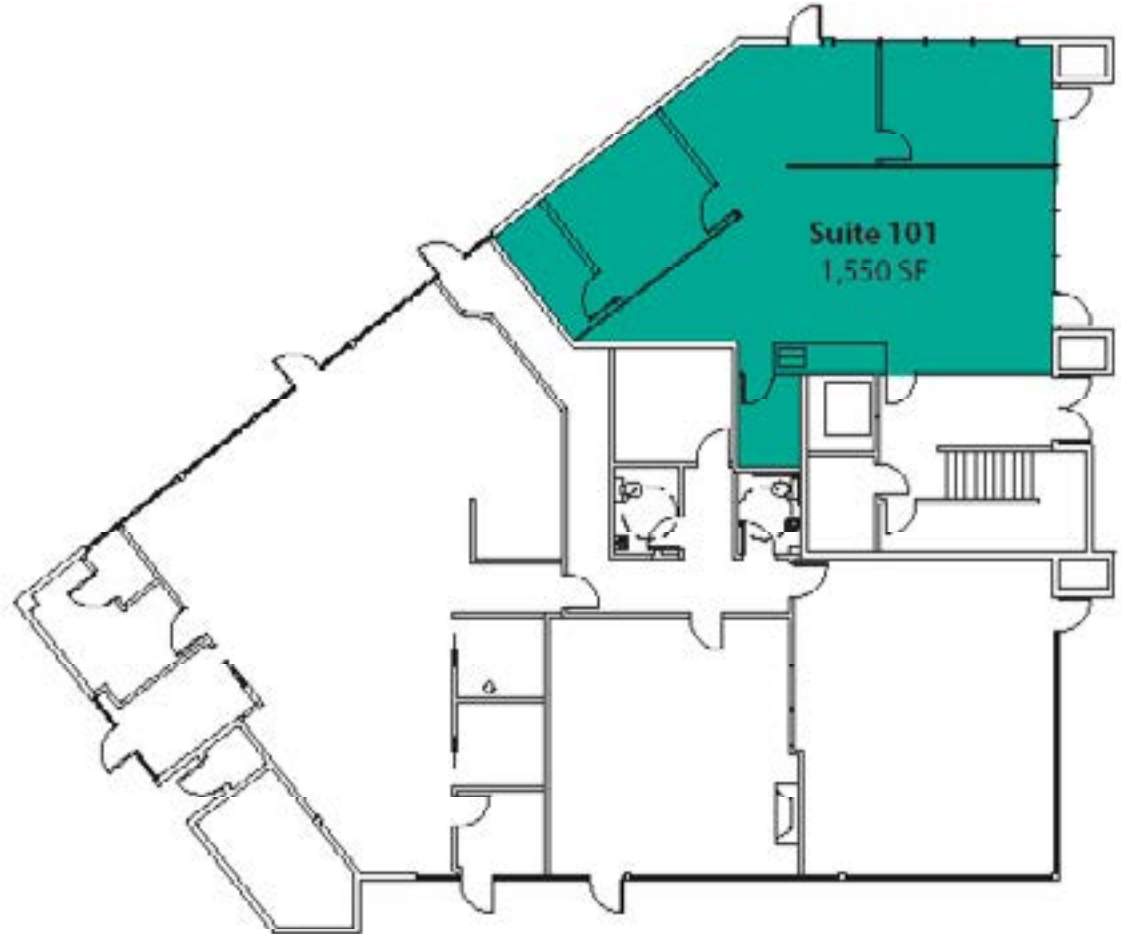


# 18910 - SECOND LEVEL FLOOR PLAN

## SUITE 101 FEATURES

---

- Available with 30 Days' Notice
- 1,550 SF
- \$40.00/SF, Gross
- First Floor Open Office/Retail Space
- 2 Private Offices
- Kitchenette

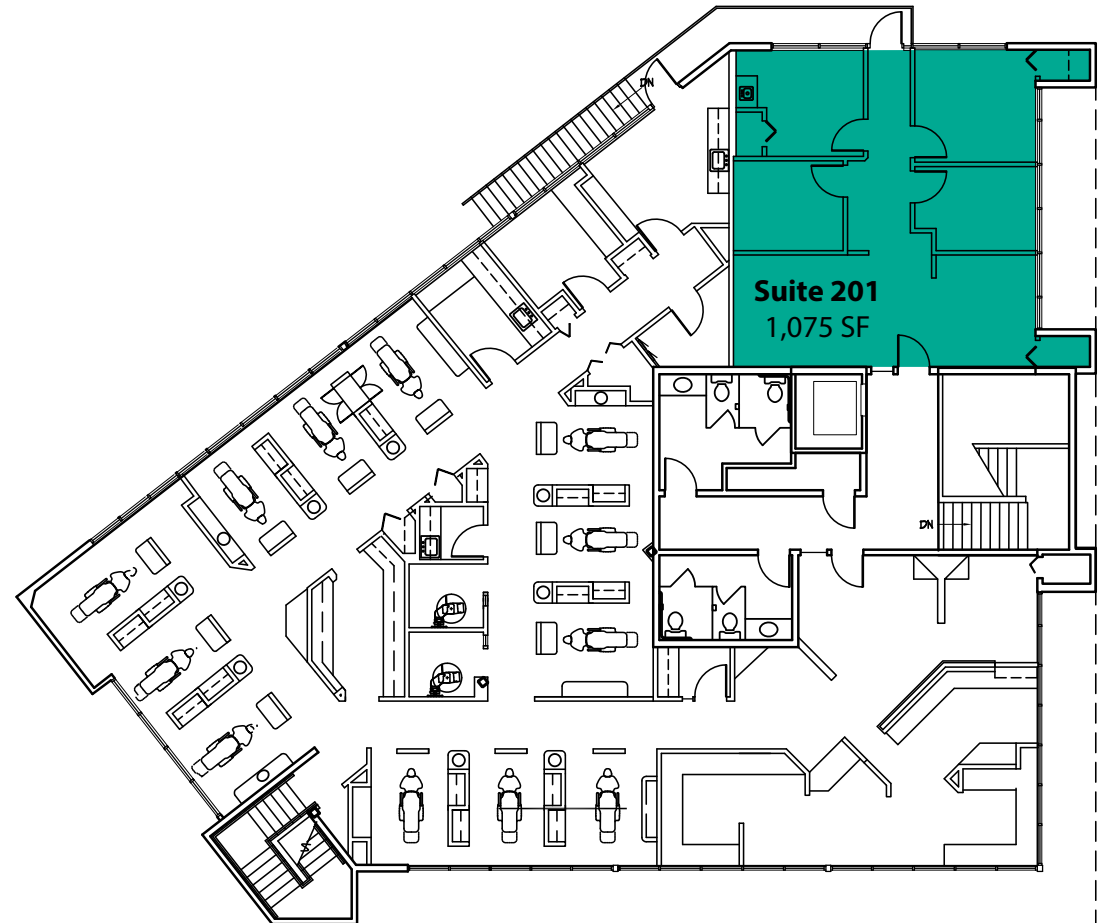


# 18910 - SECOND LEVEL FLOOR PLAN

## SUITE 201 FEATURES

---

- Available now
- 1,075 SF
- \$40.00/SF, Gross
- Second Floor Office Space
- 4 Private Offices
- Reception Area
- Direct and Lobby Entrances





The information provided herein has been obtained from sources believed to be reliable, but no representation or warranty, express or implied, is made with respect to the accuracy or completeness of any such information. Each prospective buyer or tenant should independently investigate, evaluate and verify all information provided herein and any other matters deemed material. Please consult your attorney, tax advisor or other professional advisor. The terms of sale or lease set forth herein are subject to change or withdrawal at any time and without notice.

