

LYNNWOOD EAST BUSINESS PARK

2027 196th Street SW, Lynnwood, WA 98036



SMALL OFFICE NEAR ALDERWOOD MALL

725 SF - 1,450 SF Available Now

\$13.20/SF, NNN



FEATURES:

- Low Price
- Second Floor Suites with Natural Light
- Ability to Expand Over Time
- Quick Access to I-5, I-405 & Hwy 99
- Ample Parking
- Many Nearby Food Amenities

For more information, contact:

**ROSEN~HARBOTTLE
COMMERCIAL REAL ESTATE**

Caleb Farnworth, CCIM
(425) 289-2235
calebf@rosenharbottle.com

www.rosenharbottle.com

Rosen-Harbottle Commercial Real Estate | P.O. Box 5003 Bellevue, WA 98009-5003
phone: (425) 454-3030 fax: (425) 454-6705 | www.rosenharbottle.com

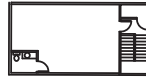
The information provided has been obtained from sources believed reliable. While we do not doubt its accuracy, we have not verified and make no guarantee, warranty or representation about it. It is your sole responsibility to independently confirm its accuracy and completeness.

LYNNWOOD EAST BUSINESS PARK

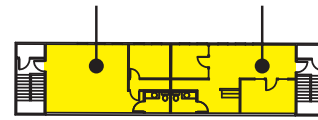
2027 196th Street SW, Lynnwood, WA 98036

BUILDING A

SECOND FLOOR OFFICES

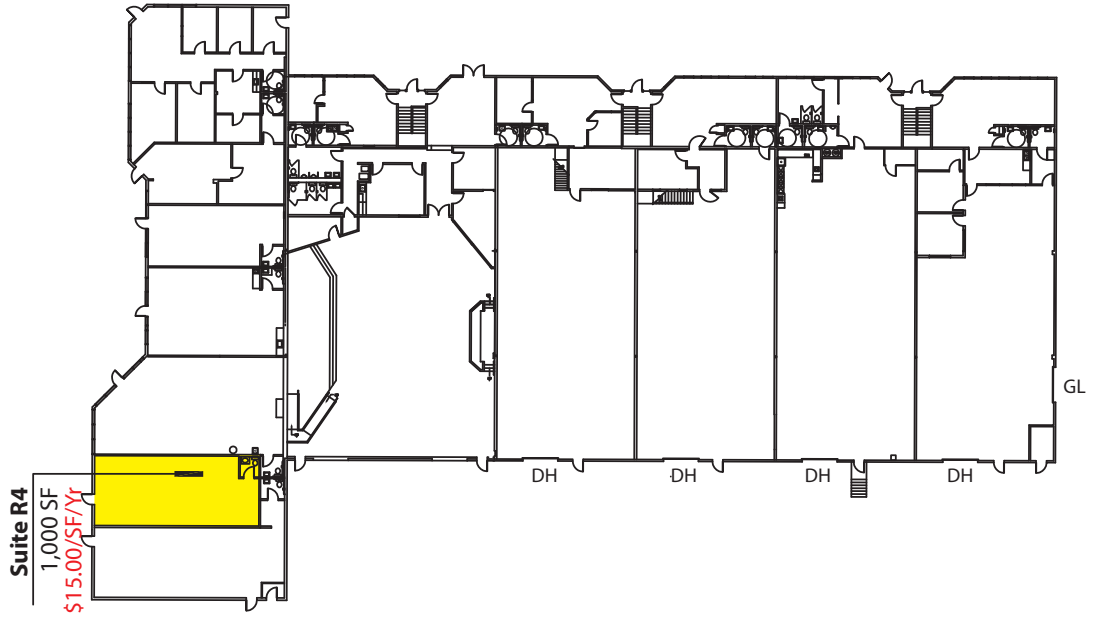


Suite A-204 725 SF Suite A-205 725 SF



Contiguous: 1,450 SF

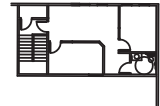
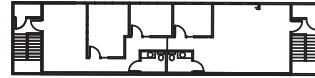
FIRST FLOOR OFFICE/WRHS



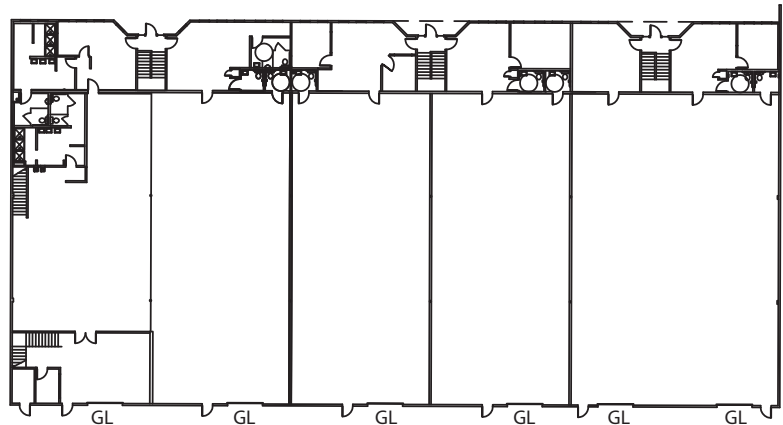
Suite R4
1,000 SF
\$15.00/SF/Yr

BUILDING B

SECOND FLOOR OFFICES



FIRST FLOOR OFFICE/WRHS

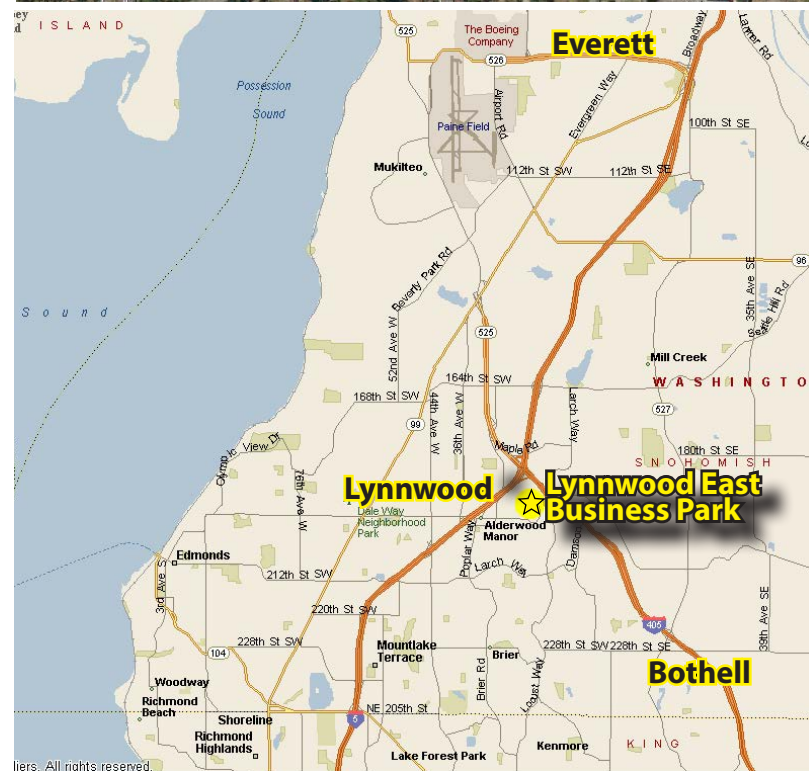
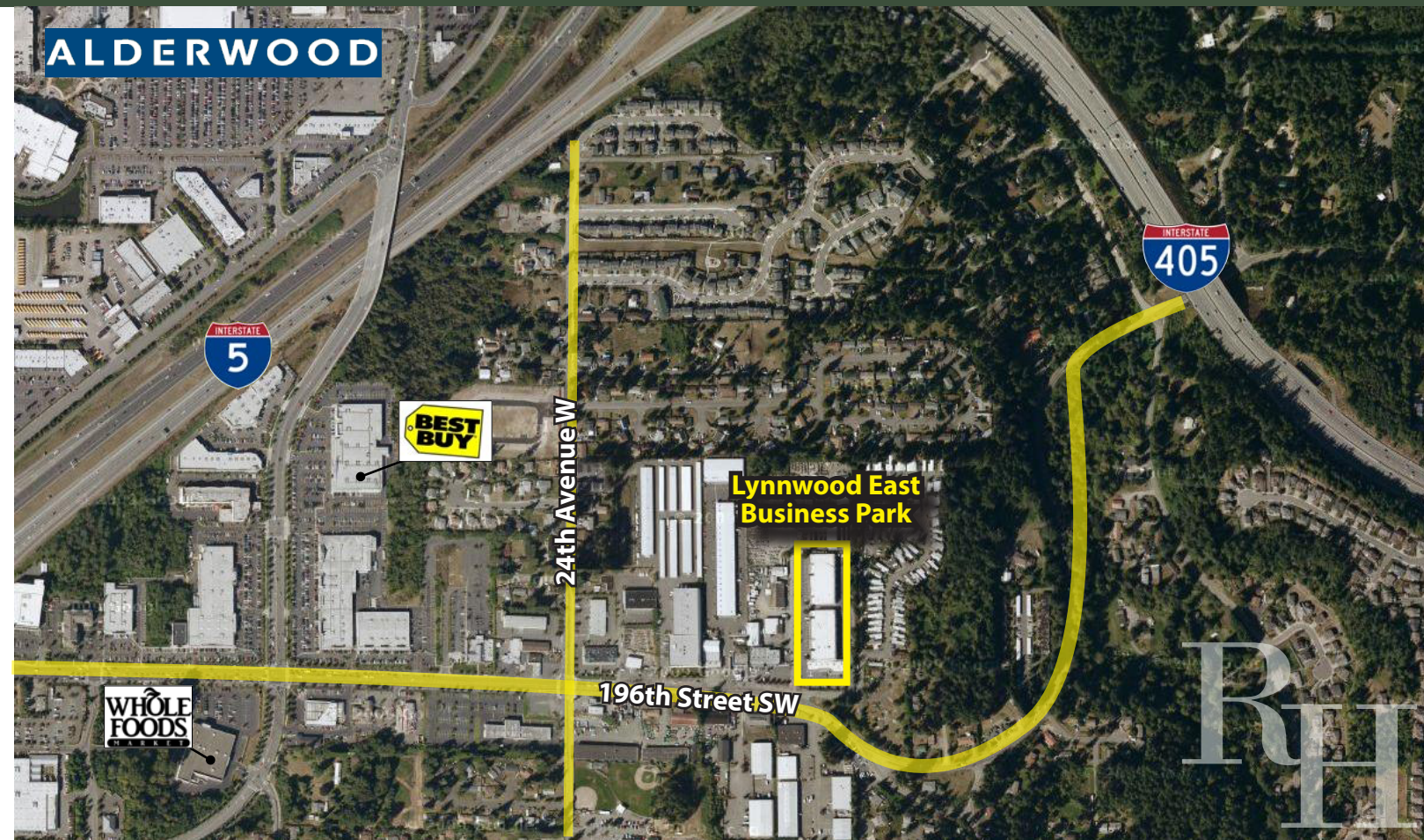


Rosen-Harbottle Commercial Real Estate | P.O. Box 5003 Bellevue, WA 98009-5003
phone: (425) 454-3030 fax: (425) 454-6705 | www.rosenharbottle.com

The information provided has been obtained from sources believed reliable. While we do not doubt its accuracy, we have not verified and make no guarantee, warranty or representation about it. It is your sole responsibility to independently confirm its accuracy and completeness.

LYNNWOOD EAST BUSINESS PARK

2027 196th Street SW, Lynnwood, WA 98036



For more information, contact:

**ROSEN~HARBOTTLE
COMMERCIAL REAL ESTATE**

Caleb Farnworth, CCIM

(425) 289-2235

calebf@rosenharbottle.com

www.rosenharbottle.com

Rosen-Harbottle Commercial Real Estate | P.O. Box 5003 Bellevue, WA 98009-5003

phone: (425) 454-3030 fax: (425) 454-6705 | www.rosenharbottle.com

The information provided has been obtained from sources believed reliable. While we do not doubt its accuracy, we have not verified and make no guarantee, warranty or representation about it. It is your sole responsibility to independently confirm its accuracy and completeness.