

RAINIER BUILDING



455 Rainier Blvd N, Issaquah, WA 98027

Connor Feuerberg

(425) 279-7943

connor@rosenharbottle.com

Brian Stewart

(425) 289-2222

brians@rosenharbottle.com

RH | ROSEN
HARBOTTLE
COMMERCIAL REAL ESTATE

RARE DOWNTOWN ISSAQUAH OFFICE SPACE FOR LEASE

1,200 SF Available Now

\$26.00 / SF, Gross

Property Features:

- Historic Downtown Location
- Second Floor Office Space
- Reception, 2 POs, Kitchenette & Open Work Area
- Quick Access to I-90 from Front Street
- Nearby Amenities within Walking Distance
 - Many Restaurants, Confluence Park, Depot Park & Rainier Trail

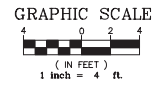
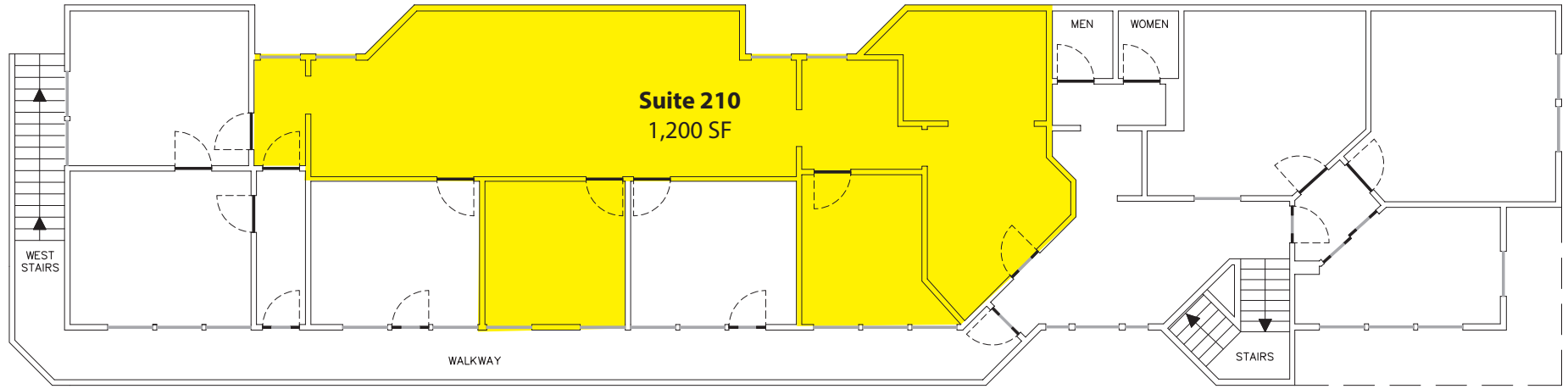


Suite	Square Feet	Rate
-------	-------------	------

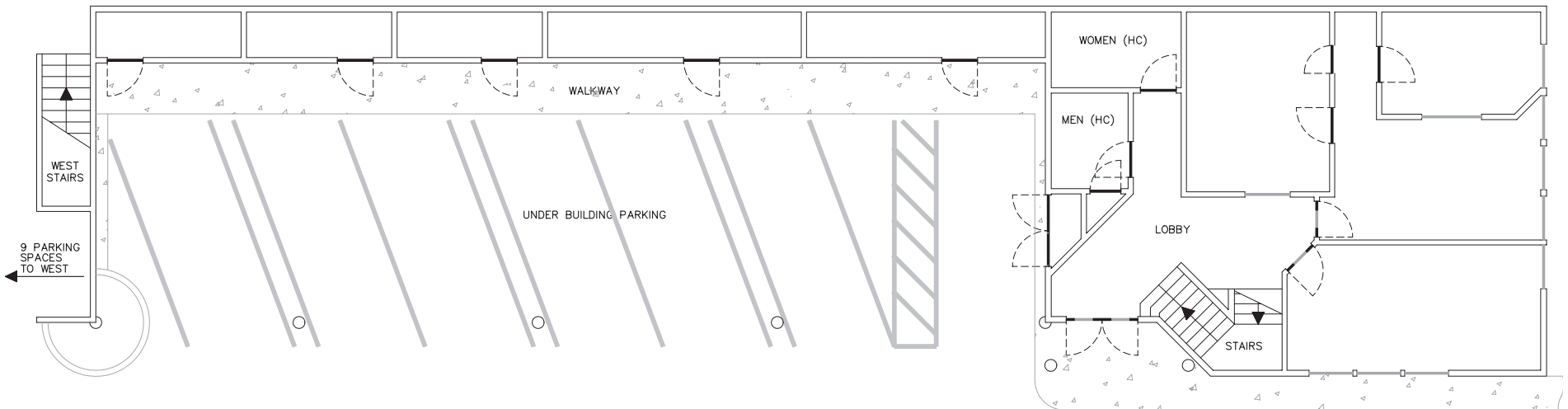
210	1,200 SF	\$24.00/SF, NNN
-----	----------	-----------------

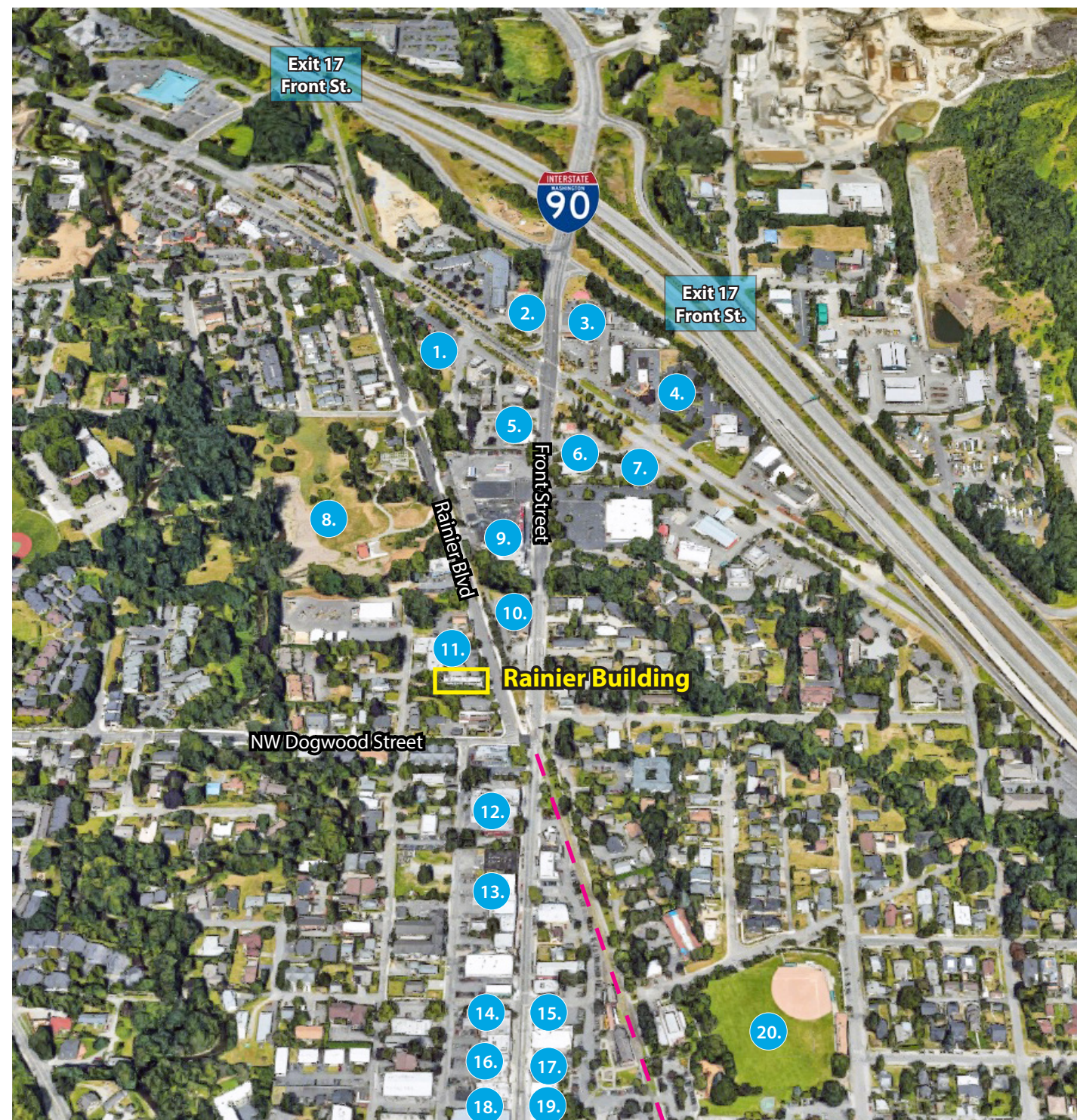
Notes: Reception, 2 POs, kitchenette and open work area.

SECOND STORY



FIRST STORY





— The Rainier Trail

1. Benjamin Moore
2. BigO Tires
3. CarToys
4. Virginia Mason Medical Center
5. Bank of America
6. Coconut Thai
7. Bright Horizons
8. Confluence Park
9. Darigold
10. Forest Fairy Bakery
11. State Farm
12. Village Theater
13. Levitate Gastropub
14. Montalcino
15. Subway
Domino's
16. Las Margaritas
17. Stan's Bar-B-Q
18. Issaquah Library
19. Jak's Grill
20. Depot Park
Veteran's Memorial Field