

# MILITARY ROAD S BUILDING

8300 MILITARY ROAD S, SEATTLE, WA 98108

**6% COMMISSION**



For more information, contact:

**ROSEN~HARBOTTLE  
COMMERCIAL REAL ESTATE**

**Jack Rosen**

(425) 289-2221

jack@rosenharbottle.com

**Connor Feuerberg**

(425) 279-7943

connor@rosenharbottle.com

www.rosenharbottle.com

**OFFICE | WAREHOUSE | FLEX**  
**4,708 SF - 8,778 SF Available**  
**\$0.95 / SF, NNN**

## FEATURES:

- Ideal for Server Farm/Data Center/Tech Startups/Light Industrial
- 4,708 SF Easily Converted to Warehouse
- Air Conditioning Throughout
- Visibility to I-5
- 3-Phase Power
- Grade-Level Loading
- Good Parking
- Storage Available

Rosen~Harbottle Commercial Real Estate | P.O. Box 5003 Bellevue, WA 98009-5003  
phone: (425) 454-3030 fax: (425) 454-6705 | www.rosenharbottle.com

The information provided has been obtained from sources believed reliable. While we do not doubt its accuracy, we have not verified and make no guarantee, warranty or representation about it. It is your sole responsibility to independently confirm its accuracy and completeness.

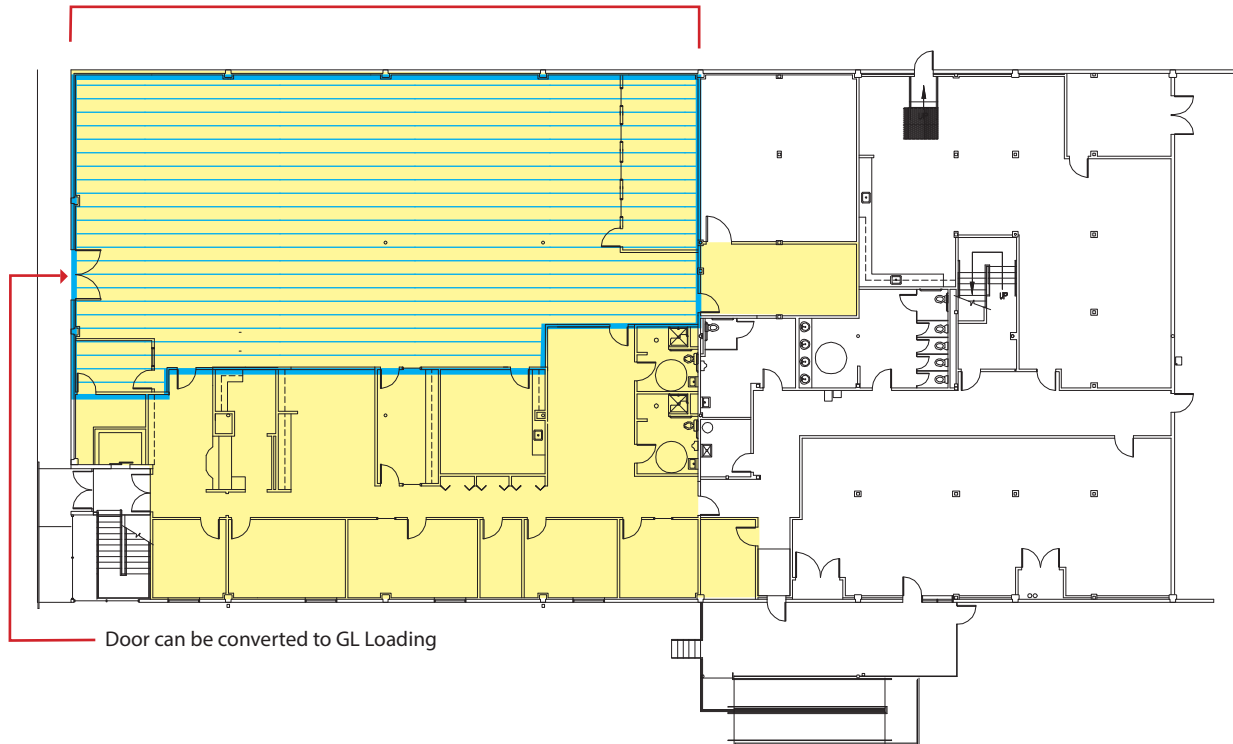
# MILITARY ROAD S BUILDING

8300 MILITARY ROAD S, SEATTLE, WA 98108

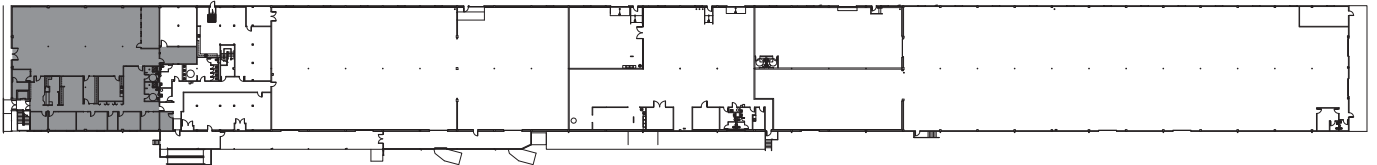
## FLOOR PLAN

**SUITE 150** - 8,778 SF Office Available

 4,708 SF can be converted to warehouse



## SITE PLAN



Rosen~Harbottle Commercial Real Estate | P.O. Box 5003 Bellevue, WA 98009-5003  
phone: (425) 454-3030 fax: (425) 454-6705 | [www.rosenharbottle.com](http://www.rosenharbottle.com)

The information provided has been obtained from sources believed reliable. While we do not doubt its accuracy, we have not verified and make no guarantee, warranty or representation about it. It is your sole responsibility to independently confirm its accuracy and completeness.

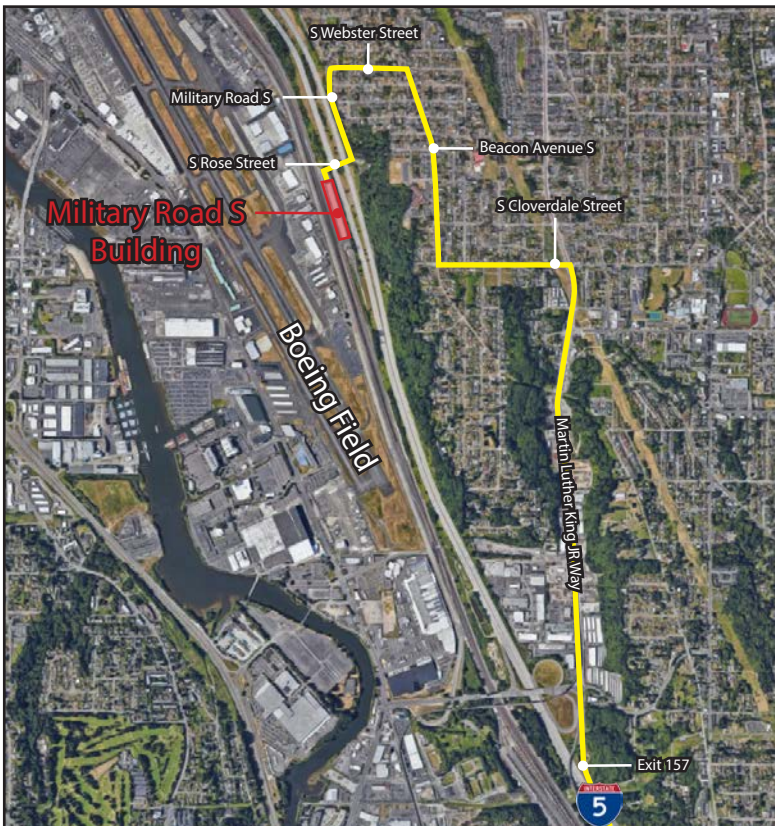
# MILITARY ROAD S BUILDING

8300 MILITARY ROAD S, SEATTLE, WA 98108



## Directions from North I-5

Take exit 161 for Albro Place toward Swift Ave  
Left on S Albro Place  
Right on Swift Ave S  
Continue onto S Myrtle Street  
Right onto Beacon Ave S  
Right onto Webster St  
Continue onto 29th Ave S  
Continue onto Military Road S  
Military Road S Building is located on the Left



## Directions from South I-5

Take exit 157 for Martin Luther King Jr Way S  
Left onto S Cloverdale Street  
Right onto Beacon Avenue S  
Left onto S Webster Road  
Continue onto Military Road S  
Continue onto S Rose Street  
Military Road S Building is located on the Left

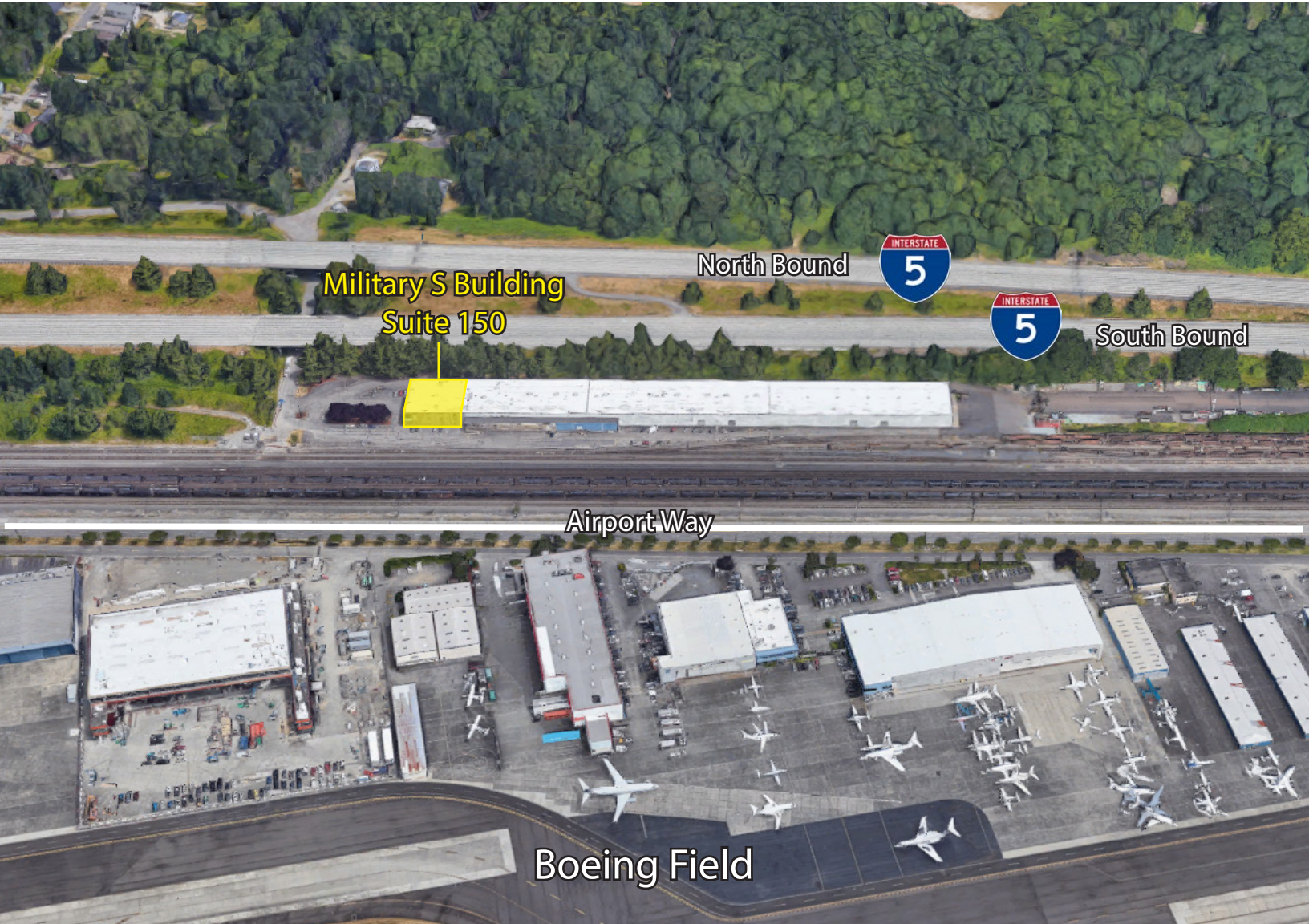
Rosen~Harbottle Commercial Real Estate | P.O. Box 5003 Bellevue, WA 98009-5003  
phone: (425) 454-3030 fax: (425) 454-6705 | [www.rosenharbottle.com](http://www.rosenharbottle.com)

The information provided has been obtained from sources believed reliable. While we do not doubt its accuracy, we have not verified and make no guarantee, warranty or representation about it. It is your sole responsibility to independently confirm its accuracy and completeness.

# MILITARY ROAD S BUILDING

8300 MILITARY ROAD S, SEATTLE, WA 98108

## LOCATION MAP



Rosen~Harbottle Commercial Real Estate | P.O. Box 5003 Bellevue, WA 98009-5003  
phone: (425) 454-3030 fax: (425) 454-6705 | [www.rosenharbottle.com](http://www.rosenharbottle.com)

The information provided has been obtained from sources believed reliable. While we do not doubt its accuracy, we have not verified and make no guarantee, warranty or representation about it. It is your sole responsibility to independently confirm its accuracy and completeness.