

HILLSIDE PLAZA SHOPPING CENTER

2000 - 2222 S 314th Street, Federal Way, WA 98003



FLEXIBLE SPACE CONFIGURATIONS!

1,500 SF - 14,645 SF Available

\$18.50/SF, NNN

FEATURES:

- Available Space Can Accommodate Most Size Requirements
- Blocks Away from The Commons, I-5, Hwy 99 & Transit Center
- Directly Adjacent to Performing Arts & Events Center - Now Open
- Great Tenant Mix: Gene Juarez, CSL Plasma, Cortiva Institute, AAA, Nail Salon & Beauty Salon
- Densely Populated Surrounding Neighborhoods



Grant Rubenstein

(425) 289-2220

grant@rosenharbottle.com

Connor Feuerberg

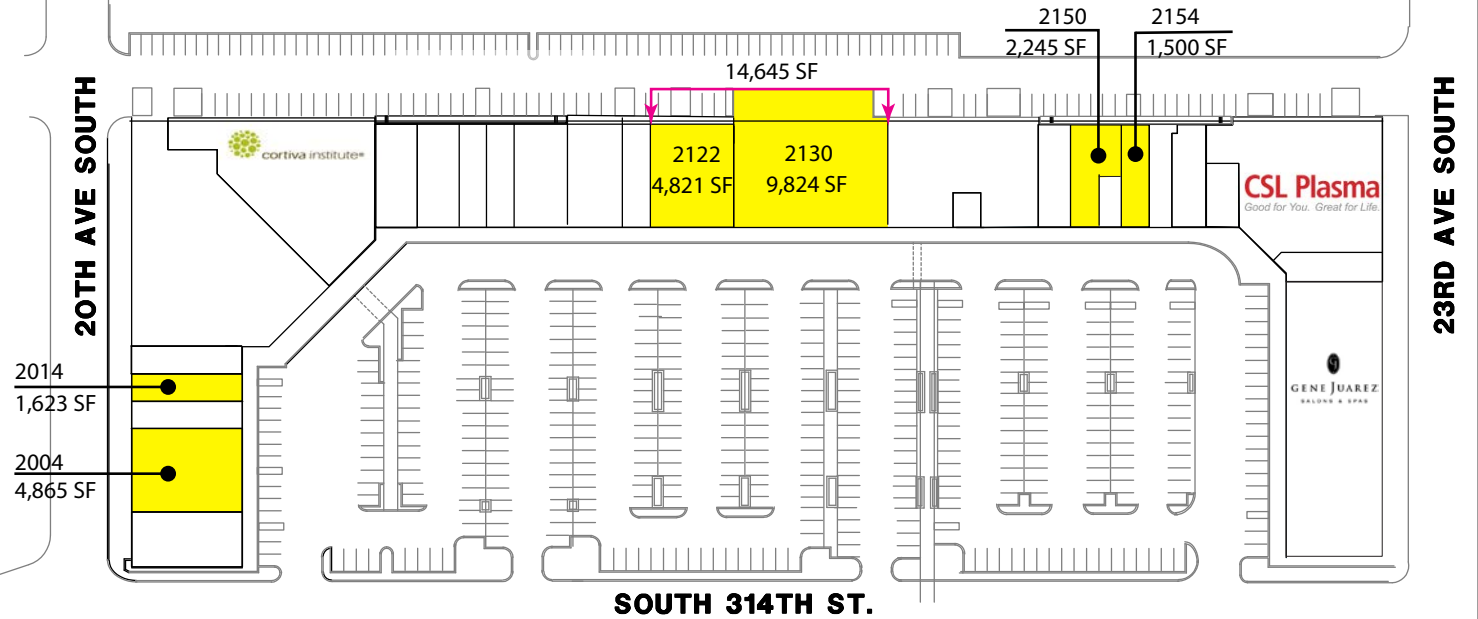
(425) 279-7943

connor@rosenharbottle.com

RH ROSEN
HARBOTTLE
COMMERCIAL REAL ESTATE

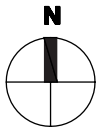


SOUTH 312TH ST.



**Federal Way Performing Arts
and Events Center
- NOW Open -**

**Federal Way
Transit Center**



Retail Trade Map



The information provided has been obtained from sources believed reliable. While we do not doubt its accuracy, we have not verified and make no guarantee, warranty or representation about it. It is your sole responsibility to independently confirm its accuracy and completeness.