

EASTLAKE BUSINESS PARK

18336-18398 Redmond-Fall City Road, Redmond, WA 98052



REDMOND INCUBATOR SPACE

Suite	Total SF	Office SF	Rent/ Month	NNN	Total/ Month	Avail
18338	1,977 SF	826 SF	\$2,160	\$692	\$2,852	5/1/18
Notes: 1 GL, reception, 2 POs, 1 RR and clear-span warehouse.						
18344	1,679 SF	714 SF	\$1,843	\$588	\$2,431	Now
Notes: Endcap suite with exposure to Redmond-Fall City Road located at entrance to business park. Reception, 2 POs, 1 RR, open work area. 1 GL and 15' CH.						

FEATURES:

- Nearby Amenities Include Home Depot, Whole Foods, Chipotle, Jimmy John's & More
- Quick Access to SR 520
- 14' - 16' Clear Height in Warehouse
- GL Rollup Doors
- Professional, Business Park Setting

For more information, contact:

ROSEN~HARBOTTLE
COMMERCIAL REAL ESTATE

Caleb Farnworth, CCIM

(425) 289-2235

calebf@rosenharbottle.com

www.rosenharbottle.com

Rosen~Harbottle Commercial Real Estate | P.O. Box 5003 Bellevue, WA 98009-5003
phone: (425) 454-3030 fax: (425) 454-6705 | www.rosenharbottle.com

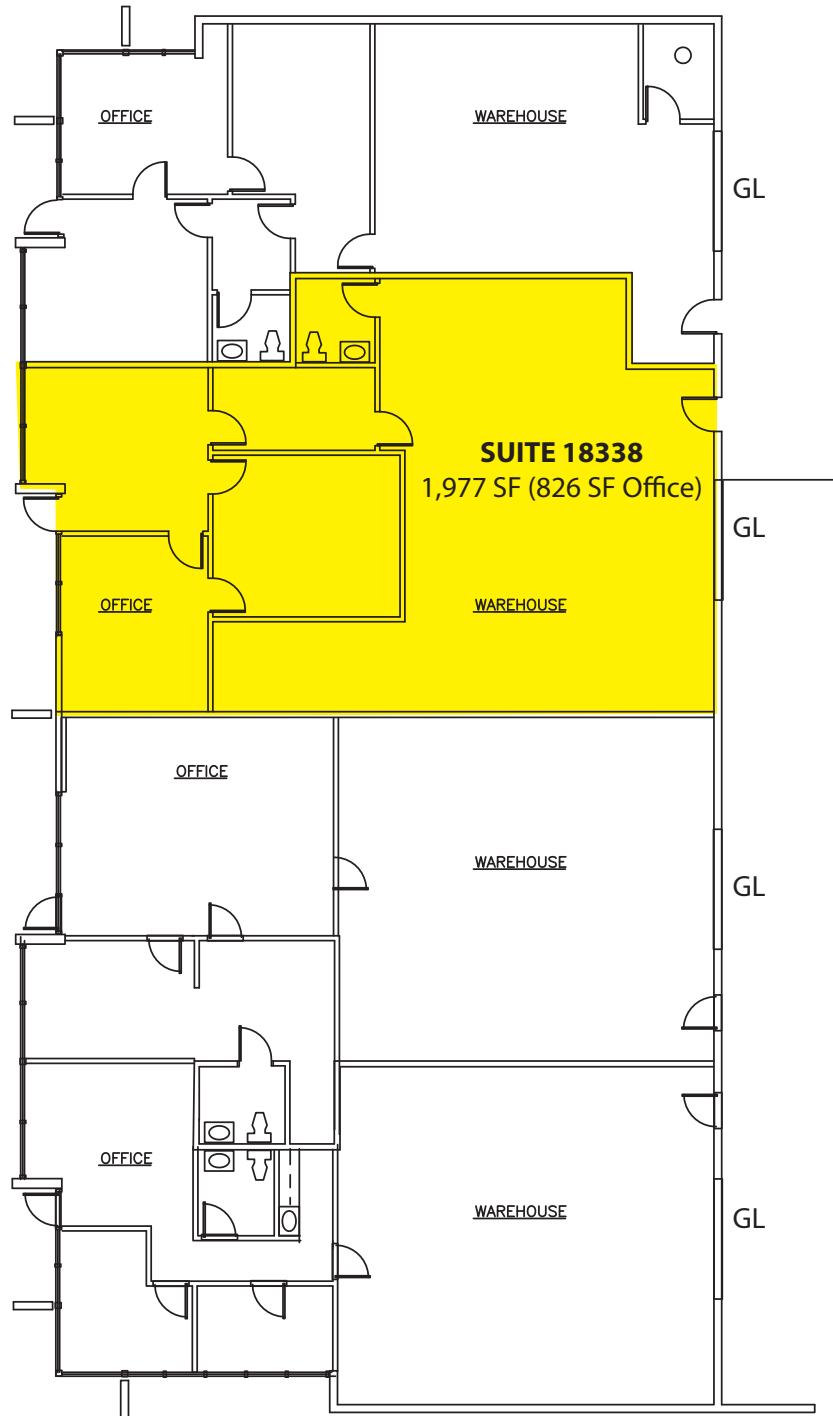
The information provided has been obtained from sources believed reliable. While we do not doubt its accuracy, we have not verified and make no guarantee, warranty or representation about it. It is your sole responsibility to independently confirm its accuracy and completeness.



EASTLAKE BUSINESS PARK

18336-18398 Redmond-Fall City Road, Redmond, WA 98052

BUILDING B



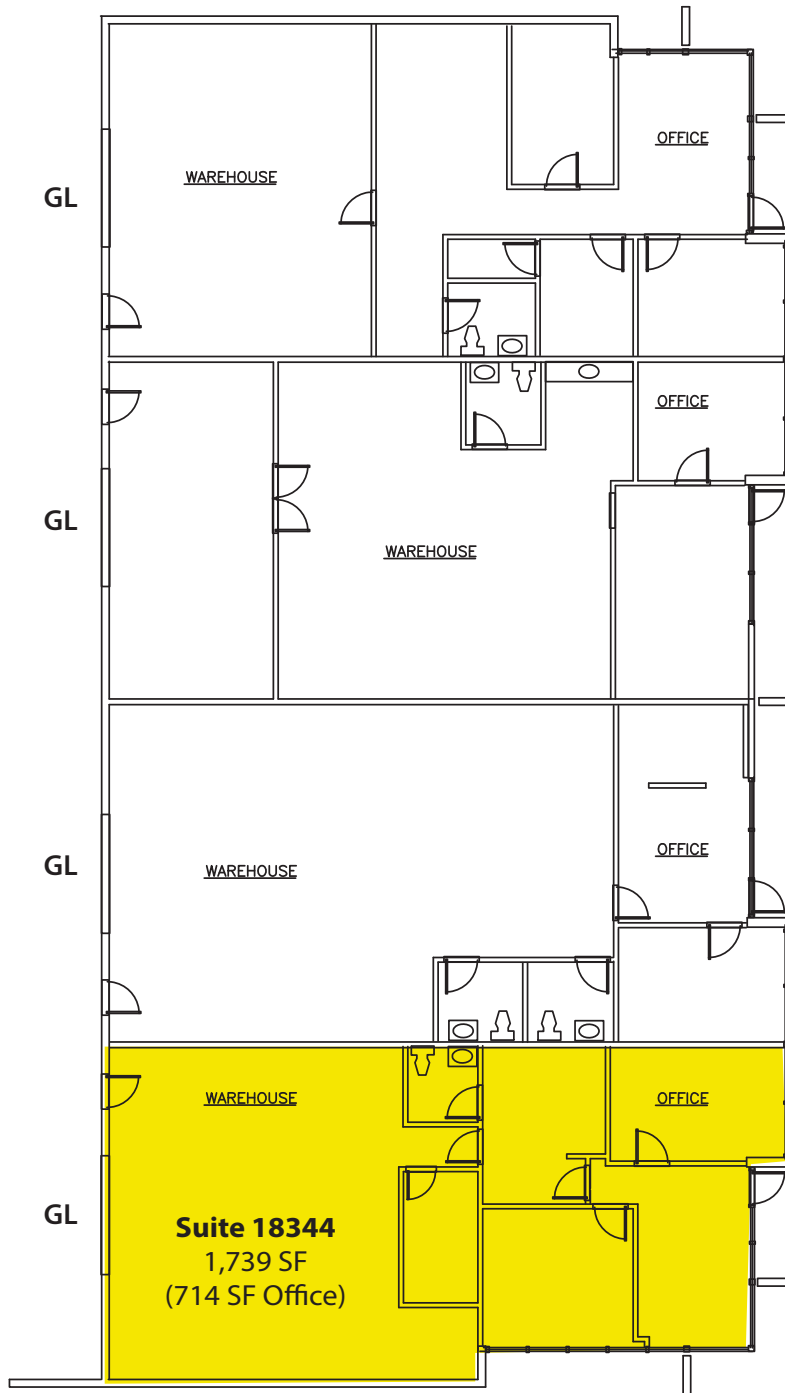
Rosen~Harbottle Commercial Real Estate | P.O. Box 5003 Bellevue, WA 98009-5003
phone: (425) 454-3030 fax: (425) 454-6705 | www.rosenharbottle.com

The information provided has been obtained from sources believed reliable. While we do not doubt its accuracy, we have not verified and make no guarantee, warranty or representation about it. It is your sole responsibility to independently confirm its accuracy and completeness.

EASTLAKE BUSINESS PARK

18336-18398 Redmond-Fall City Road, Redmond, WA 98052

BUILDING C

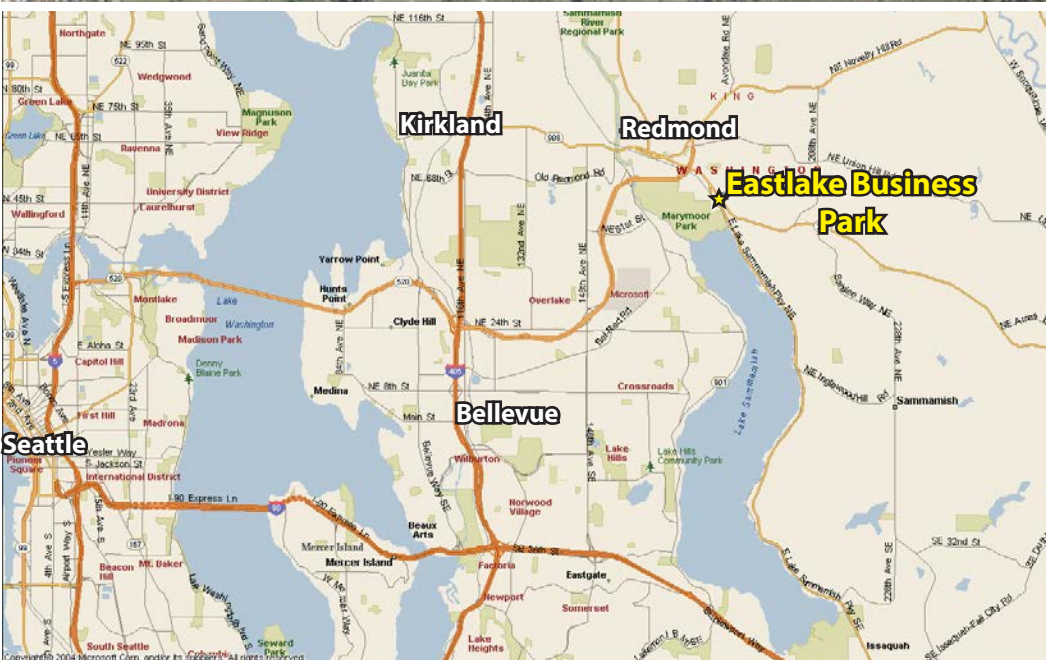
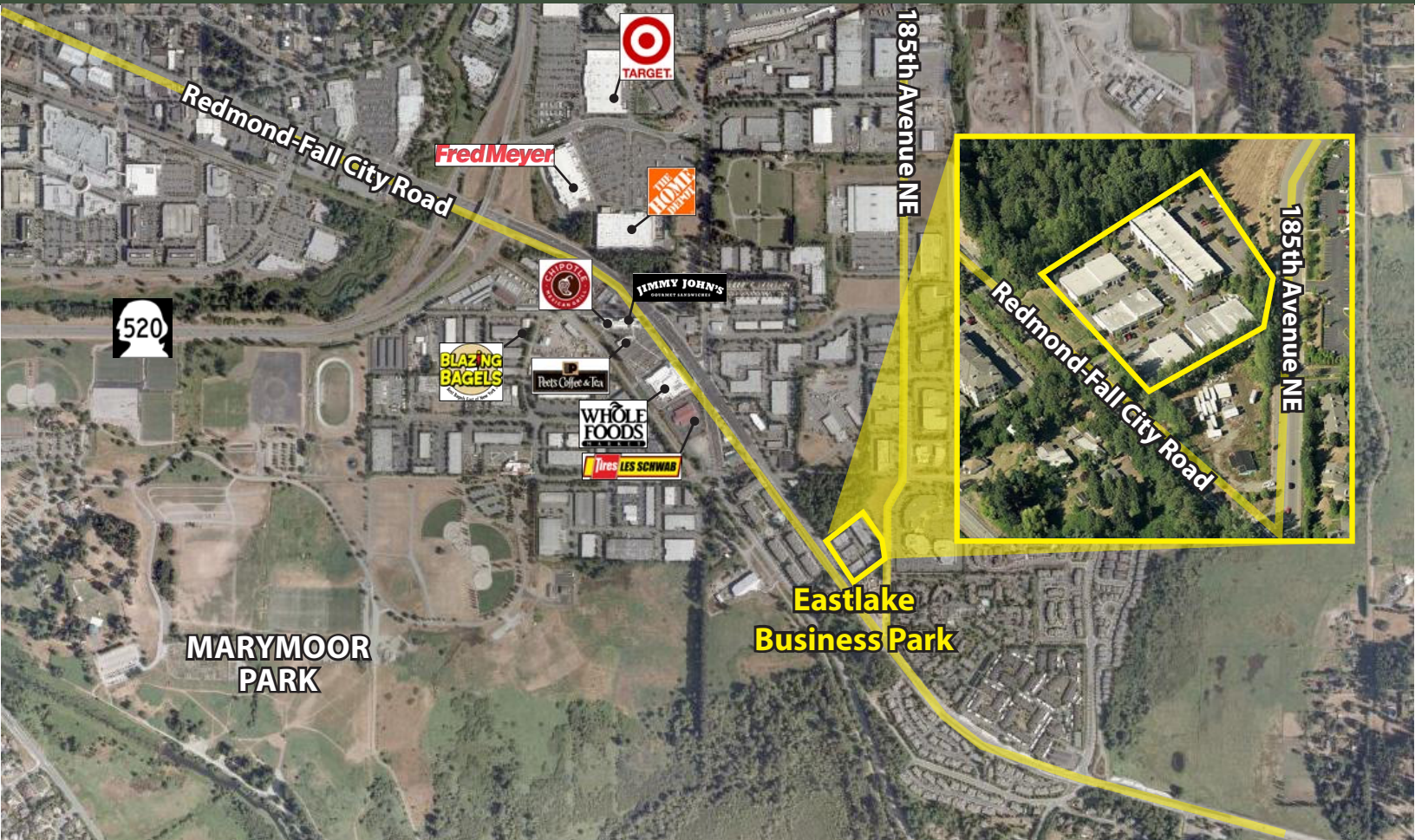


Rosen~Harbottle Commercial Real Estate | P.O. Box 5003 Bellevue, WA 98009-5003
phone: (425) 454-3030 fax: (425) 454-6705 | www.rosenharbottle.com

The information provided has been obtained from sources believed reliable. While we do not doubt its accuracy, we have not verified and make no guarantee, warranty or representation about it. It is your sole responsibility to independently confirm its accuracy and completeness.

EASTLAKE BUSINESS PARK

18336-18398 Redmond-Fall City Road, Redmond, WA 98052



For more information, contact:

ROSEN~HARBOTTLE
COMMERCIAL REAL ESTATE

Caleb Farnworth, CCIM
(425) 289-2235

calebf@rosenharbottle.com

www.rosenharbottle.com

Rosen~Harbottle Commercial Real Estate | P.O. Box 5003 Bellevue, WA 98009-5003
phone: (425) 454-3030 fax: (425) 454-6705 | www.rosenharbottle.com

The information provided has been obtained from sources believed reliable. While we do not doubt its accuracy, we have not verified and make no guarantee, warranty or representation about it. It is your sole responsibility to independently confirm its accuracy and completeness.