

RODDA PAINT BUILDING

7825 Evergreen Way, Everett, WA 98208

**FOR
LEASE**



For more information, contact:

ROSEN~HARBOTTLE
COMMERCIAL REAL ESTATE

Grant Rubenstein
(425) 289-2220
grant@rosenharbottle.com

Mimi Rosen
(425) 289-2217
mimi@rosenharbottle.com

High Visibility Retail on Evergreen Way

5,697 SF AVAILABLE

\$16.00 / SF, NNN

FEATURES:

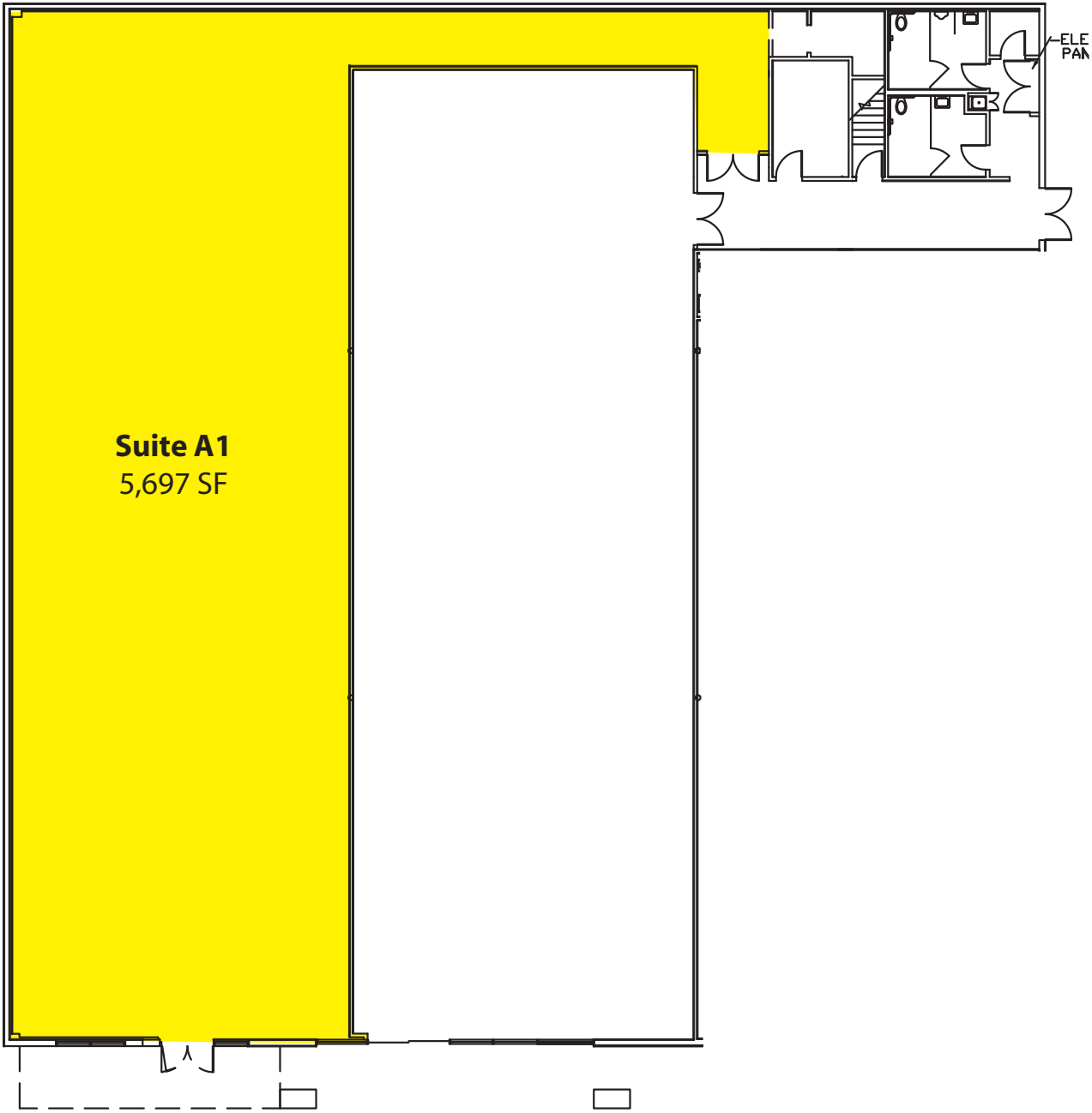
- **5,697 SF Available with 30 Days Notice**
 - Currently Occupied by Quality Rentals
- New High-Efficiency Lighting
- Best Signage on Evergreen Way
- Adjacent to Cascade Center
 - Safeway, Big Lots & Ross Anchored
- 5.0 / 1,000 SF Parking Ratio

Rosen~Harbottle Commercial Real Estate | P.O. Box 5003 Bellevue, WA 98009-5003
phone: (425) 454-3030 fax: (425) 454-6705 | www.rosenharbottle.com

The information provided has been obtained from sources believed reliable. While we do not doubt its accuracy, we have not verified and make no guarantee, warranty or representation about it. It is your sole responsibility to independently confirm its accuracy and completeness.

RODDA PAINT BUILDING

7825 Evergreen Way, Everett, WA 98208



Evergreen Way

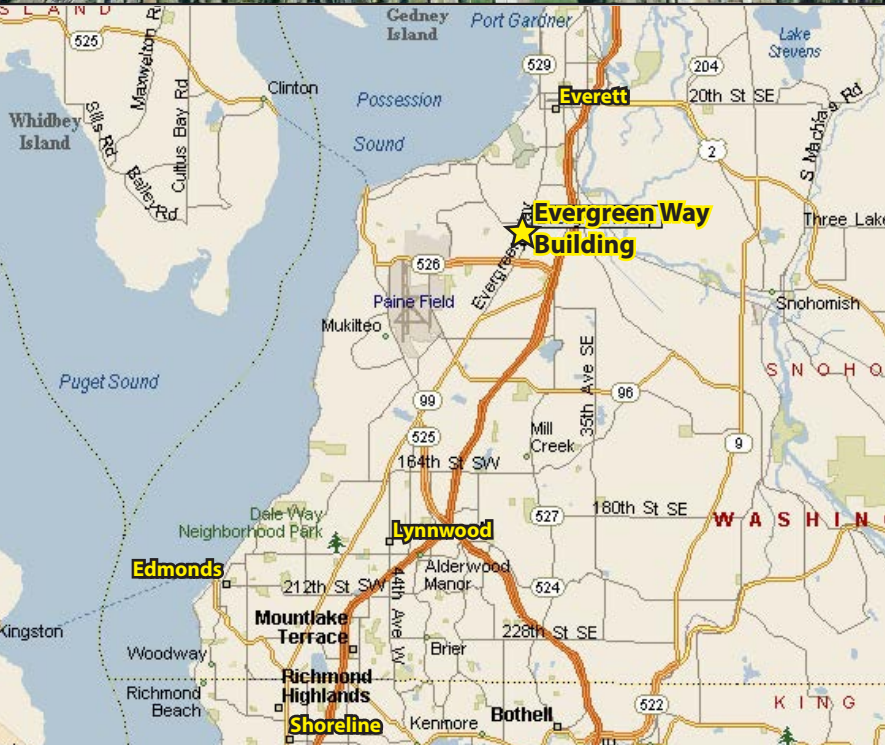
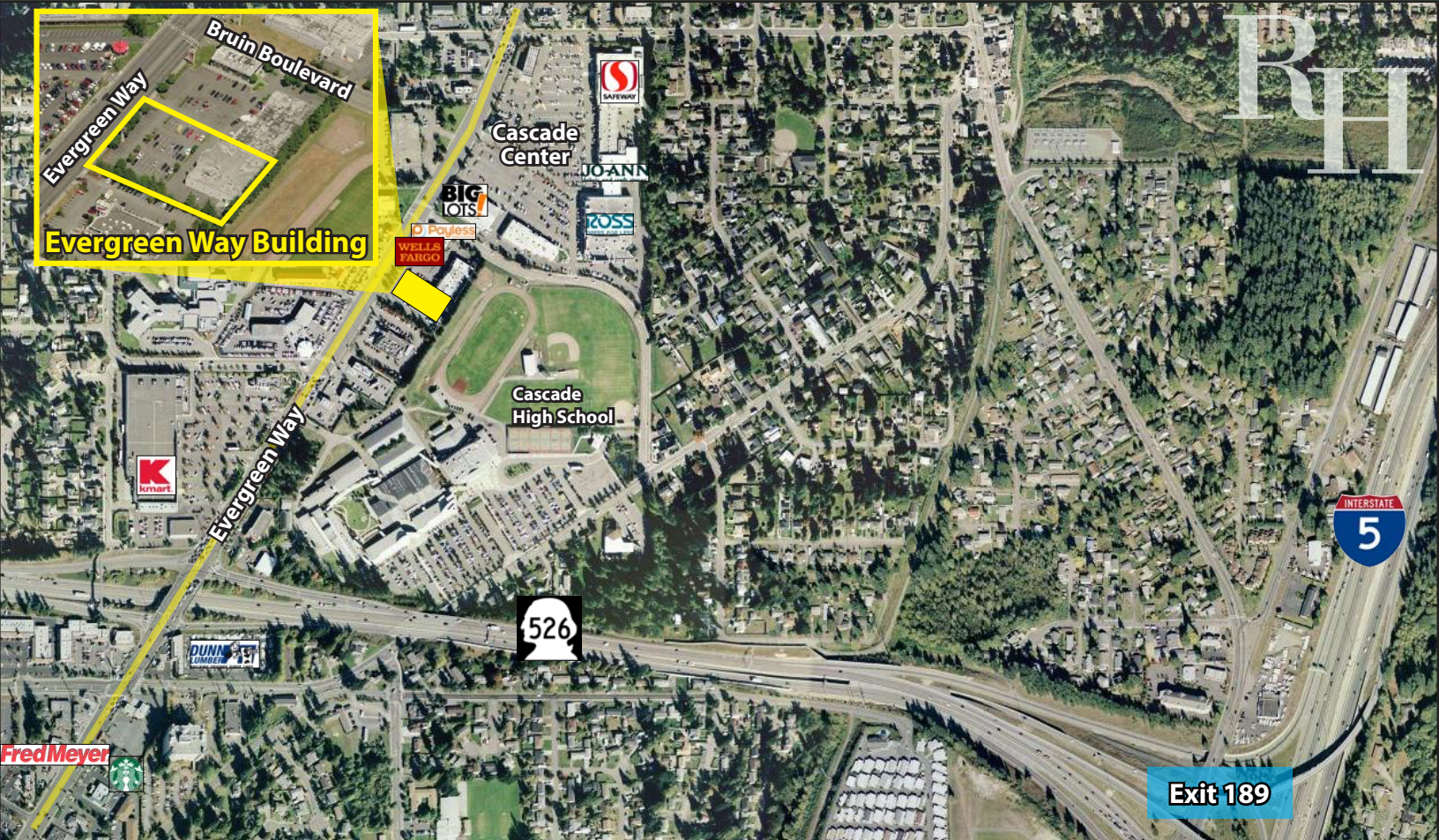
Rosen~Harbottle Commercial Real Estate | P.O. Box 5003 Bellevue, WA 98009-5003
phone: (425) 454-3030 fax: (425) 454-6705 | www.rosenharbottle.com

The information provided has been obtained from sources believed reliable. While we do not doubt its accuracy, we have not verified and make no guarantee, warranty or representation about it. It is your sole responsibility to independently confirm its accuracy and completeness.



RODDA PAINT BUILDING

7825 Evergreen Way, Everett, WA 98208



For more information, contact:

**ROSEN~HARBOTTLE
COMMERCIAL REAL ESTATE**

Grant Rubenstein

(425) 289-2220

grant@rosenharbottle.com

Mimi Rosen

(425) 289-2217

mimi@rosenharbottle.com

www.rosenharbottle.com

Rosen~Harbottle Commercial Real Estate | P.O. Box 5003 Bellevue, WA 98009-5003
phone: (425) 454-3030 fax: (425) 454-6705 | www.rosenharbottle.com

The information provided has been obtained from sources believed reliable. While we do not doubt its accuracy, we have not verified and make no guarantee, warranty or representation about it. It is your sole responsibility to independently confirm its accuracy and completeness.

