



FOR LEASE

# East Campus Corporate Park IV

3450 S 344TH WAY, FEDERAL WAY, WASHINGTON



**MARK CLIREHUGH, SIOR, CCIM**  
253.722.1416  
mark.clirehugh@kidder.com

**WILL FRAME**  
253.722.1412  
will.frame@kidder.com

**DREW FRAME**  
253.722.1433  
drew.frame@kidder.com

**Kidder  
Mathews**

This information supplied herein is from sources we deem reliable. It is provided without any representation, warranty, or guarantee, expressed or implied as to its accuracy. Prospective Buyer or Tenant should conduct an independent investigation and verification of all matters deemed to be material, including, but not limited to, statements of income and expenses. Consult your attorney, accountant, or other professional advisor.

**KIDDER.COM**



FOR LEASE

# ECCP IV

3450 S 344TH WAY, FEDERAL WAY, WA



## 2019 Building Renovations

**RENOVATIONS** to include lobby, common areas, bathrooms, and exterior

**FIRST FLOOR** 2,225 RSF to 10,929 RSF

**SECOND FLOOR** 4,870 RSF to 33,674 RSF

**RATE** \$14.50 PSF, NNN (\$8.49 PSF inclusive of all utilities and suite specific janitorial)

**ACCESS** immediate access to SR-18 & I-5

**MARK CLIREHUGH, SIOR, CCIM**  
253.722.1416  
mark.clirehugh@kidder.com

**WILL FRAME**  
253.722.1412  
will.frame@kidder.com

**DREW FRAME**  
253.722.1433  
drew.frame@kidder.com

[KIDDER.COM](http://KIDDER.COM)

This information supplied herein is from sources we deem reliable. It is provided without any representation, warranty, or guarantee, expressed or implied as to its accuracy. Prospective Buyer or Tenant should conduct an independent investigation and verification of all matters deemed to be material, including, but not limited to, statements of income and expenses. Consult your attorney, accountant, or other professional advisor.

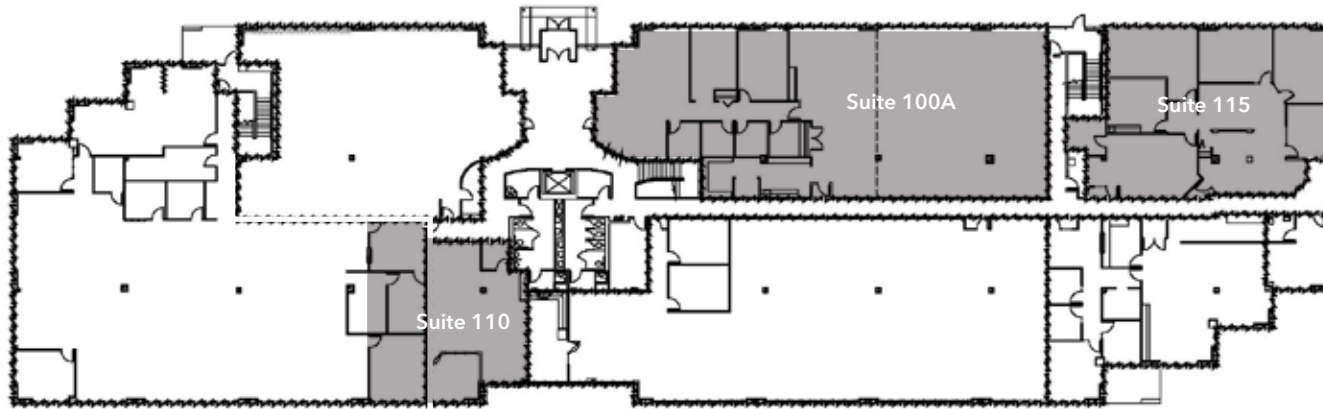
**km** Kidder Mathews

**FOR LEASE**

# ECCP IV

3450 S 344TH WAY, FEDERAL WAY, WA

## First Floor



### BUILDING AVAILABLE SPACE

Suite	SF
100A	5,619 RSF
110	2,225 RSF
115	3,185 RSF

**2,225 - 10,929**

SQUARE FEET

**\$14.50, NNN**

LEASE RATE

**MARK CLIREHUGH, SIOR, CCIM**

253.722.1416

[mark.clirehugh@kidder.com](mailto:mark.clirehugh@kidder.com)

**WILL FRAME**

253.722.1412

[will.frame@kidder.com](mailto:will.frame@kidder.com)

**DREW FRAME**

253.722.1433

[drew.frame@kidder.com](mailto:drew.frame@kidder.com)

[KIDDER.COM](http://KIDDER.COM)

This information supplied herein is from sources we deem reliable. It is provided without any representation, warranty, or guarantee, expressed or implied as to its accuracy. Prospective Buyer or Tenant should conduct an independent investigation and verification of all matters deemed to be material, including, but not limited to, statements of income and expenses. Consult your attorney, accountant, or other professional advisor.

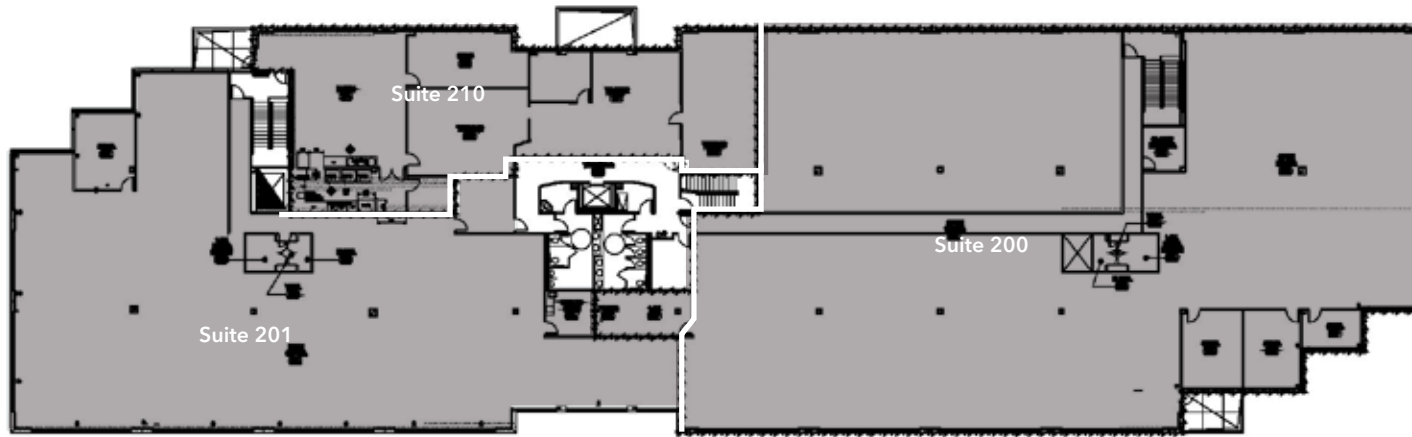
**km** Kidder  
Mathews

**FOR LEASE**

# ECCP IV

3450 S 344TH WAY, FEDERAL WAY, WA

## Second Floor



### BUILDING AVAILABLE SPACE

Suite	SF
200	18,188 RSF
201	10,698 RSF
210	4,870 RSF

**4,870-33,674**

SQUARE FEET

**\$14.50, NNN**

LEASE RATE

**MARK CLIREHUGH, SIOR, CCIM**

253.722.1416

[mark.clirehugh@kidder.com](mailto:mark.clirehugh@kidder.com)

**WILL FRAME**

253.722.1412

[will.frame@kidder.com](mailto:will.frame@kidder.com)

**DREW FRAME**

253.722.1433

[drew.frame@kidder.com](mailto:drew.frame@kidder.com)

[KIDDER.COM](http://KIDDER.COM)

This information supplied herein is from sources we deem reliable. It is provided without any representation, warranty, or guarantee, expressed or implied as to its accuracy. Prospective Buyer or Tenant should conduct an independent investigation and verification of all matters deemed to be material, including, but not limited to, statements of income and expenses. Consult your attorney, accountant, or other professional advisor.

