

# HILLSIDE PLAZA SHOPPING CENTER

2000 - 2222 S 314<sup>th</sup> Street, Federal Way, WA 98003



## FLEXIBLE SPACE CONFIGURATIONS!

920 SF - 18,780 SF Available

\$18.50/SF, NNN

### FEATURES:

- Available Space Can Accommodate Any Size Requirements
- Blocks Away from The Commons, I-5, Hwy 99 & Transit Center
- Directly Adjacent to Performing Arts & Events Center  
- Opening Summer 2017
- Great Tenant Mix: Gene Juarez, CSL Plasma, Cortiva Institute, AAA, Nail Salon & Beauty Salon
- Densely Populated Surrounding Neighborhoods

For more information, contact:

ROSEN~HARBOTTLE  
COMMERCIAL REAL ESTATE

**Grant Rubenstein**  
(425) 289-2220  
grant@rosenharbottle.com

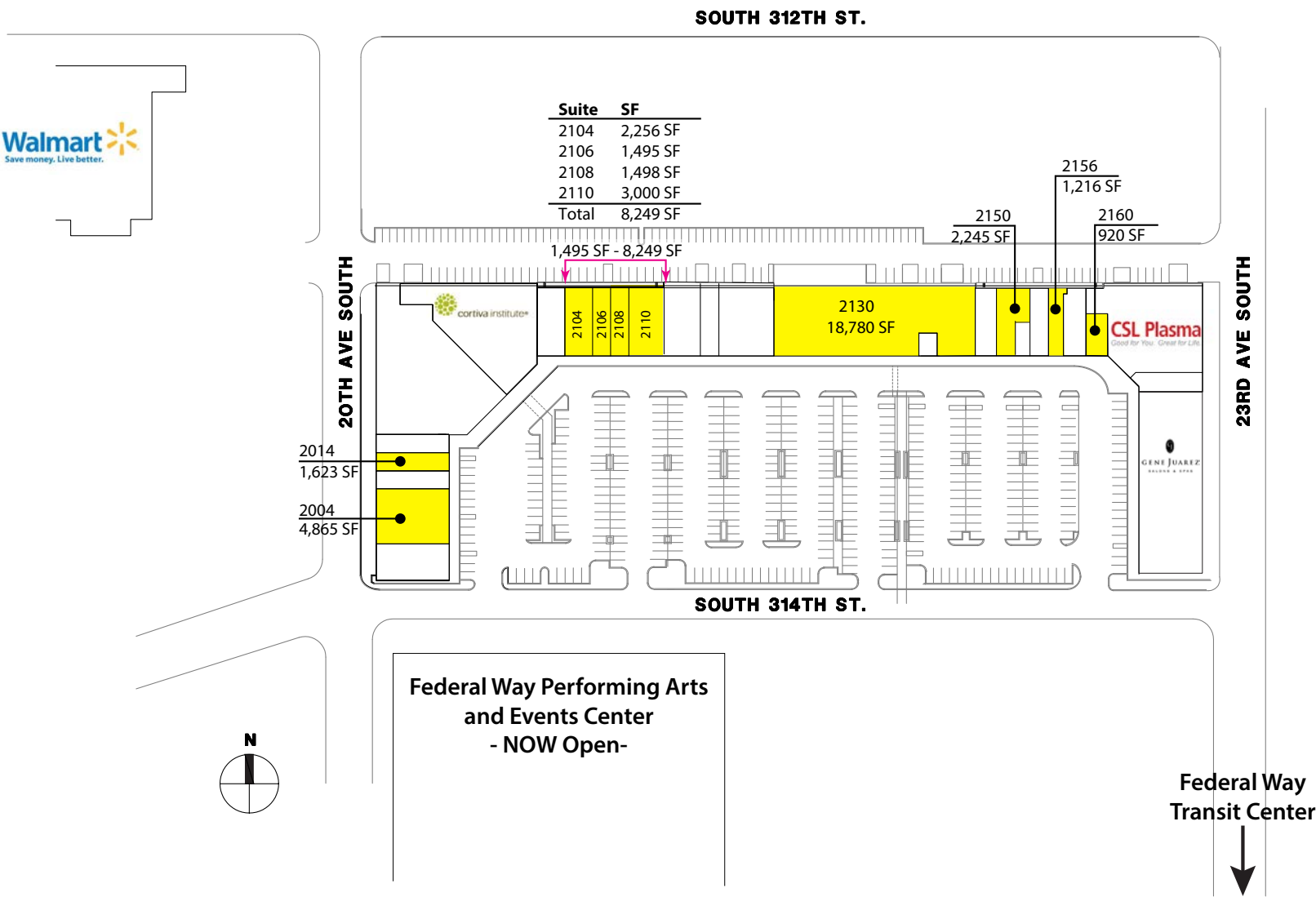
www.rosenharbottle.com

Rosen~Harbottle Commercial Real Estate | P.O. Box 5003 Bellevue, WA 98009-5003  
phone: (425) 454-3030 fax: (425) 454-6705 | www.rosenharbottle.com

The information provided has been obtained from sources believed reliable. While we do not doubt its accuracy, we have not verified and make no guarantee, warranty or representation about it. It is your sole responsibility to independently confirm its accuracy and completeness.

# HILLSIDE PLAZA SHOPPING CENTER

2000 - 2222 S 314<sup>th</sup> Street, Federal Way, WA 98003



Rosen~Harbottle Commercial Real Estate | P.O. Box 5003 Bellevue, WA 98009-5003  
 phone: (425) 454-3030 fax: (425) 454-6705 | www.rosenharbottle.com

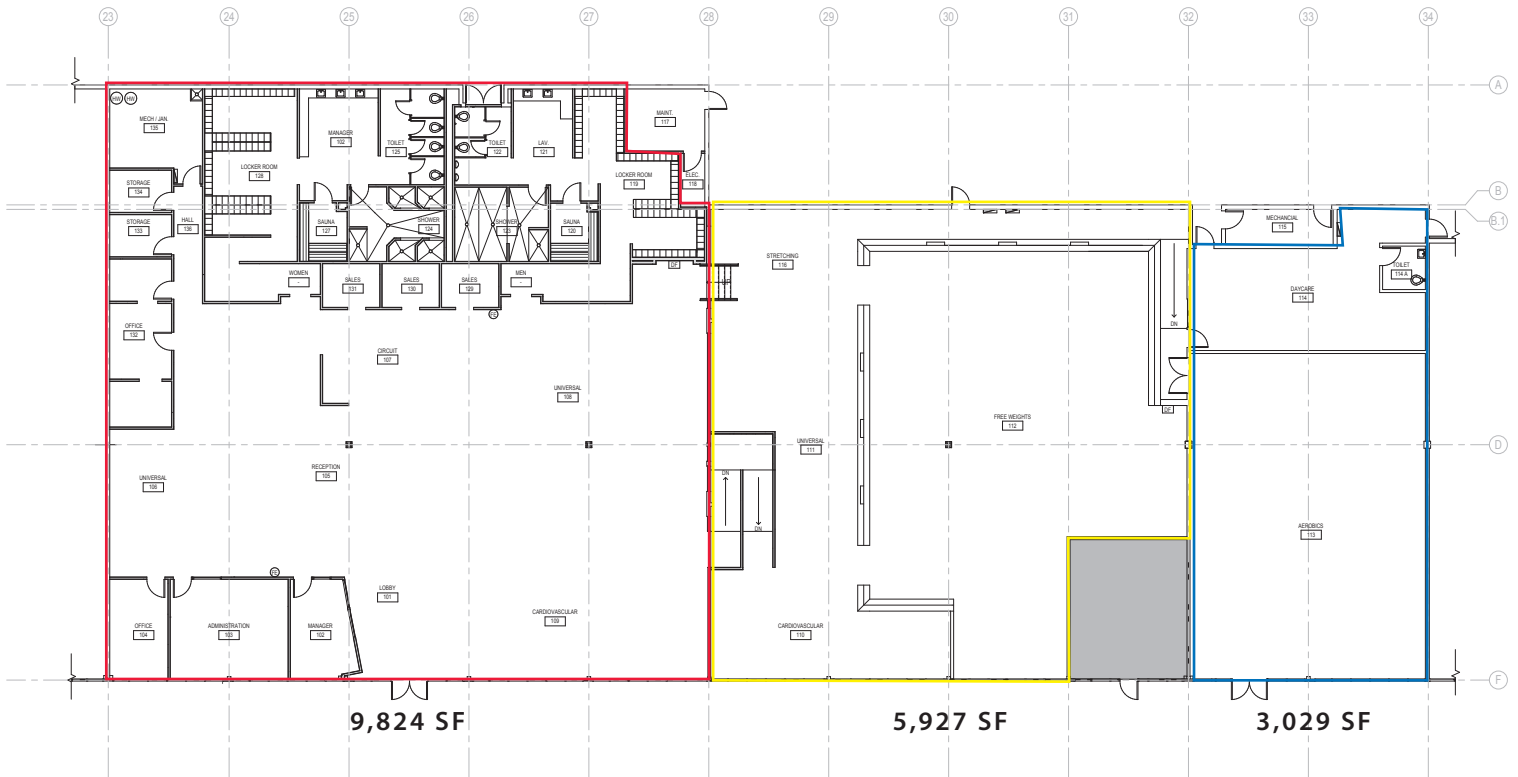
The information provided has been obtained from sources believed reliable. While we do not doubt its accuracy, we have not verified and make no guarantee, warranty or representation about it. It is your sole responsibility to independently confirm its accuracy and completeness.



# HILLSIDE PLAZA SHOPPING CENTER

2000 - 2222 S 314<sup>th</sup> Street, Federal Way, WA 98003

## 24 Hour Fitness Space



### FEATURES:

- 18,780 SF (divisible)
- Private Offices
- Women's and Men's Locker Rooms
  - Includes Showers and Sauna
- Daycare
- Aerobics Room

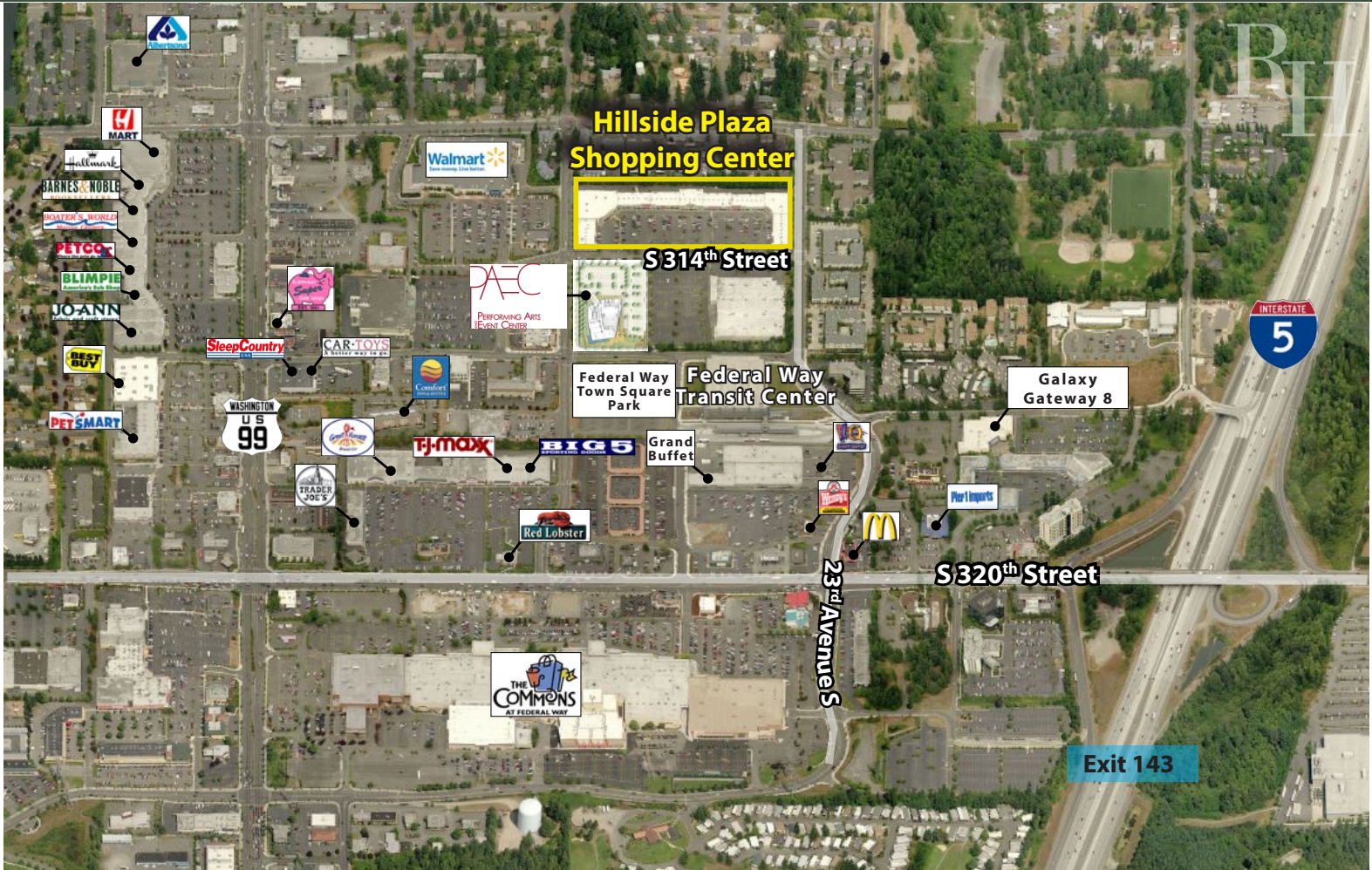
Rosen~Harbottle Commercial Real Estate | P.O. Box 5003 Bellevue, WA 98009-5003  
phone: (425) 454-3030 fax: (425) 454-6705 | [www.rosenharbottle.com](http://www.rosenharbottle.com)

The information provided has been obtained from sources believed reliable. While we do not doubt its accuracy, we have not verified and make no guarantee, warranty or representation about it. It is your sole responsibility to independently confirm its accuracy and completeness.



# HILLSIDE PLAZA SHOPPING CENTER

2000 - 2222 S 314<sup>th</sup> Street, Federal Way, WA 98003



For more information, contact:

**ROSEN~HARBOTTLE  
COMMERCIAL REAL ESTATE**

**Grant Rubenstein**  
(425) 289-2220  
grant@rosenharbottle.com

www.rosenharbottle.com

Rosen~Harbottle Commercial Real Estate | P.O. Box 5003 Bellevue, WA 98009-5003  
phone: (425) 454-3030 fax: (425) 454-6705 | www.rosenharbottle.com

The information provided has been obtained from sources believed reliable. While we do not doubt its accuracy, we have not verified and make no guarantee, warranty or representation about it. It is your sole responsibility to independently confirm its accuracy and completeness.

