

OFFICE
LEASE



LYNNWOOD EAST BUSINESS PARK

2031 196th Street SW | Lynnwood, WA

Caleb Farnworth, CCIM

425.289.2235

calebf@rosenharbottle.com

425.454.3030
rosenharbottle.com

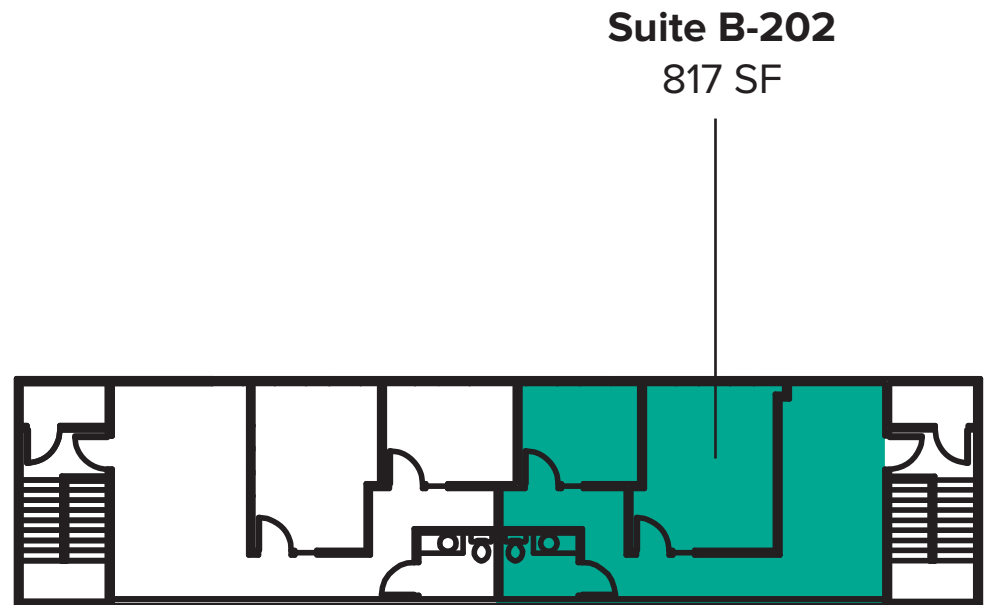
PO Box 5003
Bellevue, WA 98009 - 5003



SUITE B-202 FLOOR PLAN

SUITE FEATURES

- Available Now
- 817 SF
- \$1,345/Month, NNN
- Second Floor Office Suite with Natural Light
- 2 Private Offices, Open Office Area, Reception Area, and 1 Restroom
- Abundant Parking
- Monument Signage and Building Signage Available
- Immediate Access to I-5, I-405, and SR-525



LOCATION MAP

