

RH North Creek Business Center

11810-11824 North Creek Parkway N, Bothell, WA 98011



Building 1



Building 2



Building 6

OFFICE, TECH/ASSEMBLY & FLEX

| Bldg-Suite | Square Feet | Available |
|---|----------------------------------|-----------|
| 2-100 | 6,000 SF - 46,205 SF | 3/1/2015 |
| Tech/assembly: heavy power, HVAC throughout & versatile loading. Contiguous with Building 4. | | |
| 4-100 | 9,800 SF - 21,500 SF | Now |
| Full building available; office build out. Contiguous with Building 2 for 46,205 SF total. | | |
| 1-101 | 3,975 SF-6,155 SF (3,975 SF ofc) | 3/1/2015 |
| Tech/assembly space with hood, plumbing. Office with POs, storage, break room, conference room. | | |
| 6-110 | 2,383 SF (1,800 SF ofc) | Now |
| Open office with multiple POs, direct access, small storage and GL door. | | |
| 1-205 | 1,132 SF | Now |
| Second floor office with 2 POs and open work space. Corner suite. | | |

FEATURES:

- Class A Corporate Image
- Building Signage Available
- Prestigious North Creek Location
- Nearby Amenities: Restaurants, Retail, Childcare, Hotel, & Sports Fields
- Quick Access to I-405, SR-522 Downtown Bothell

Rosen~Harbottle Commercial Real Estate | P.O. Box 5003 Bellevue, WA 98009-5003
phone: (425) 454-3030 fax: (425) 454-6705 | www.rosenharbottle.com

The information provided has been obtained from sources believed reliable. While we do not doubt its accuracy, we have not verified and make no guarantee, warranty or representation about it. It is your sole responsibility to independently confirm its accuracy and completeness.



For more information, contact:

ROSEN~HARBOTTLE
COMMERCIAL REAL ESTATE

Brian Stewart

(425) 289-2222

brians@rosenharbottle.com

Caleb Farnworth, CCIM

(425) 289-2235

calebf@rosenharbottle.com

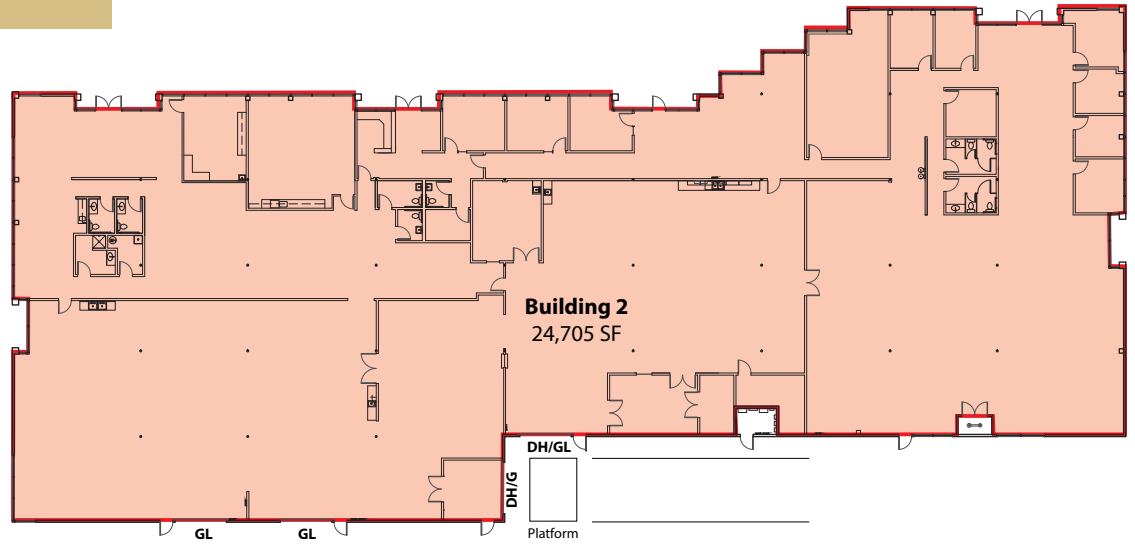
www.rosenharbottle.com

RH North Creek Business Center

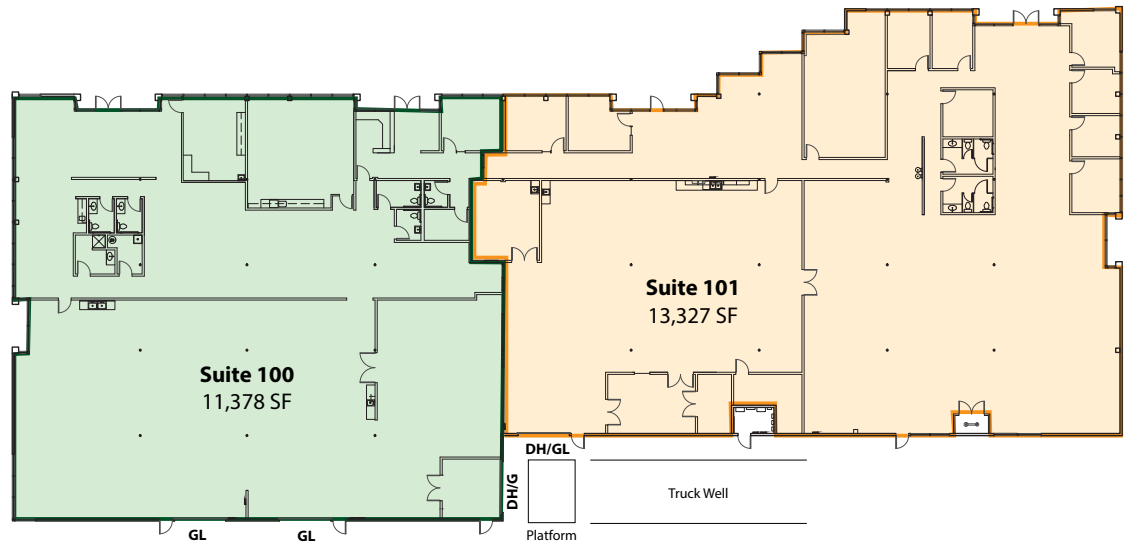
11810-11824 North Creek Parkway N, Bothell, WA 98011

Building 2

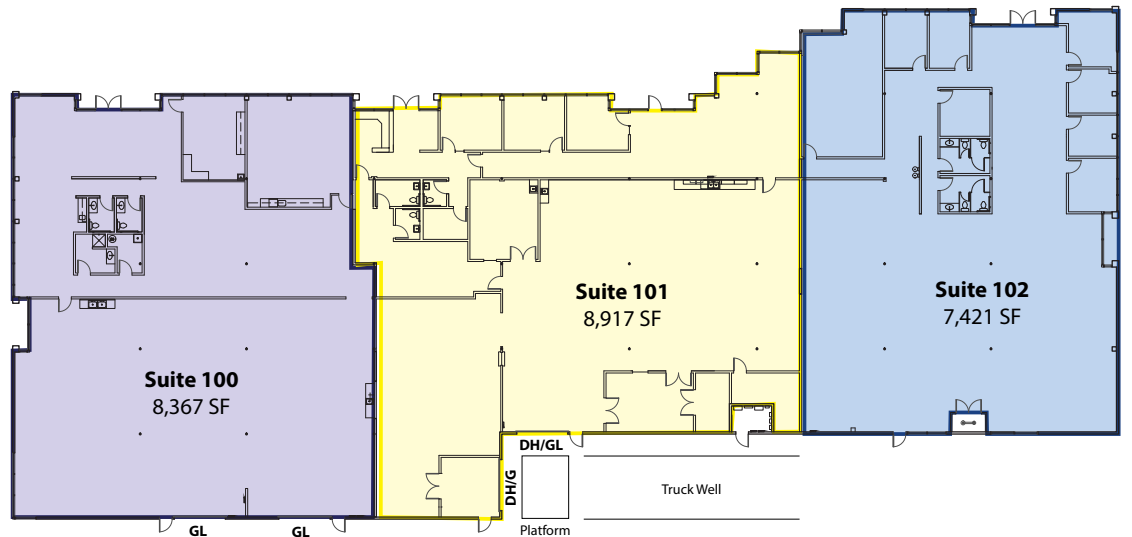
EXISTING



OPTION A



OPTION B



Rosen~Harbottle Commercial Real Estate | P.O. Box 5003 Bellevue, WA 98009-5003
phone: (425) 454-3030 fax: (425) 454-6705 | www.rosenharbottle.com

The information provided has been obtained from sources believed reliable. While we do not doubt its accuracy, we have not verified and make no guarantee, warranty or representation about it. It is your sole responsibility to independently confirm its accuracy and completeness.

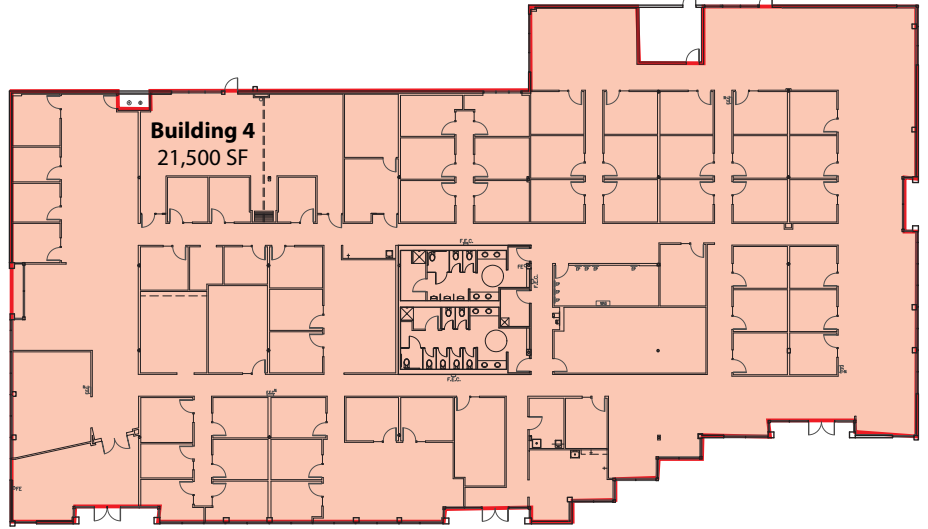


RH North Creek Business Center

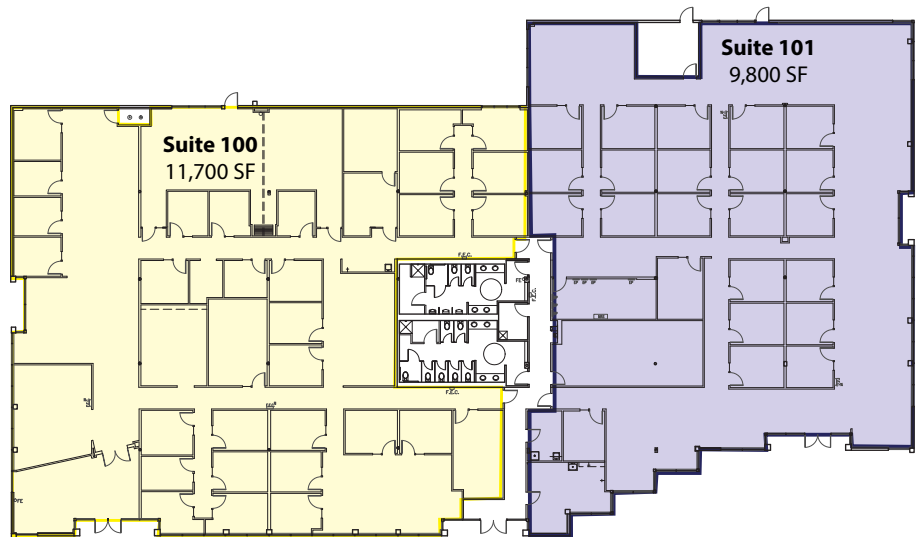
11810-11824 North Creek Parkway N, Bothell, WA 98011

Building 4

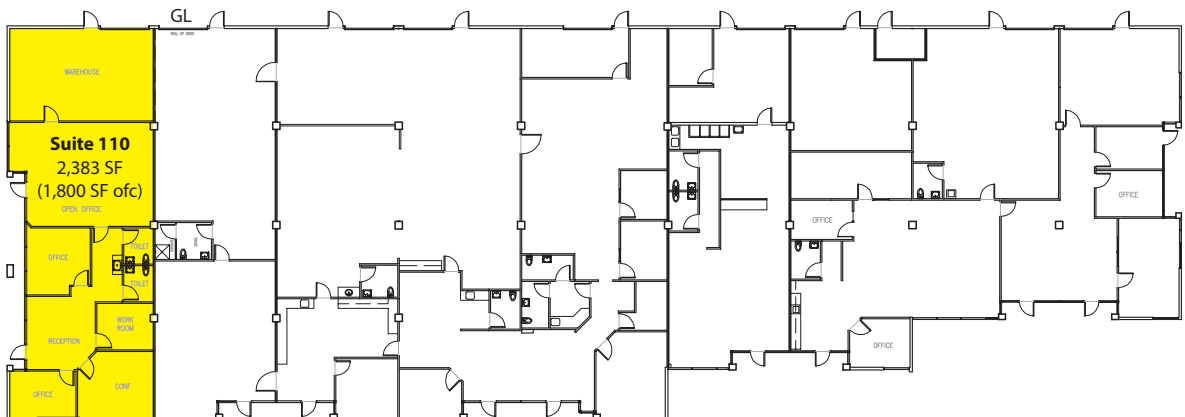
EXISTING



OPTION A



Building 6



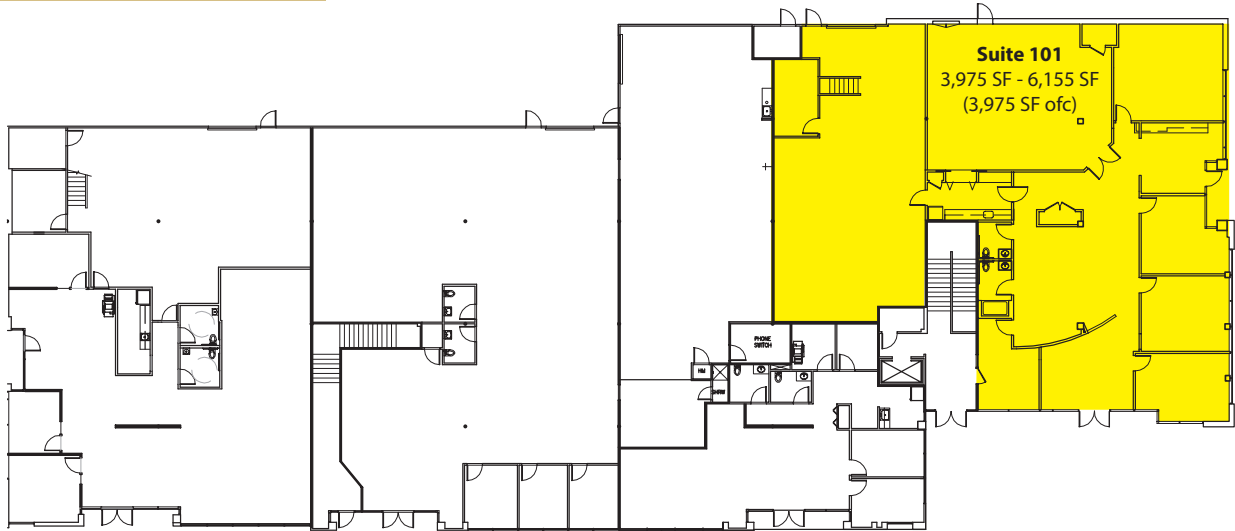
Rosen~Harbottle Commercial Real Estate | P.O. Box 5003 Bellevue, WA 98009-5003
phone: (425) 454-3030 fax: (425) 454-6705 | www.rosenharbottle.com

The information provided has been obtained from sources believed reliable. While we do not doubt its accuracy, we have not verified and make no guarantee, warranty or representation about it. It is your sole responsibility to independently confirm its accuracy and completeness.

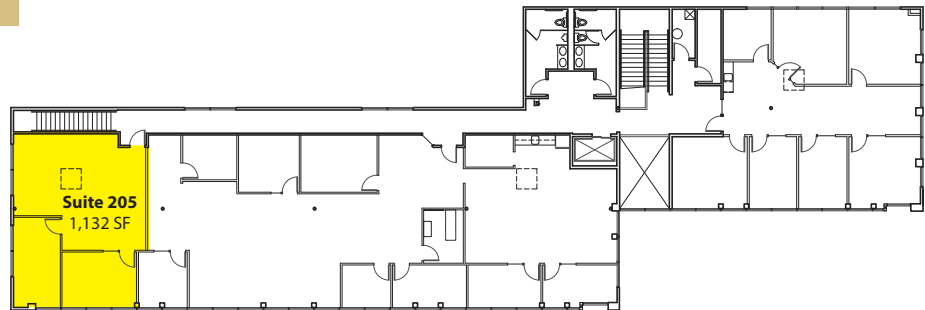
RH North Creek Business Center

11810-11824 North Creek Parkway N, Bothell, WA 98011

Building 1 - First Floor



Building 1 - Second Floor



Site Plan



Rosen~Harbottle Commercial Real Estate | P.O. Box 5003 Bellevue, WA 98009-5003
phone: (425) 454-3030 fax: (425) 454-6705 | www.rosenharbottle.com

The information provided has been obtained from sources believed reliable. While we do not doubt its accuracy, we have not verified and make no guarantee, warranty or representation about it. It is your sole responsibility to independently confirm its accuracy and completeness.



RH North Creek Business Center

11810-11824 North Creek Parkway N, Bothell, WA 98011



**RH North Creek
Business Center**

Corporate Neighbors

- | | | |
|----------------------------|-------------------------------|------------------------|
| 1. AT&T | 6. AT&T | 11. Talentwise |
| 2. General Dynamics | 7. United Healthcare Services | 12. Tetra Tech |
| 3. Valeant Pharmaceuticals | 8. Progressive, Banner Bank | 13. T-Mobile |
| 4. AMEC | 9. Vertafore | 14. Puget Sound Energy |
| 5. Google | 10. State Farm | 15. HUB International |

Rosen~Harbottle Commercial Real Estate | P.O. Box 5003 Bellevue, WA 98009-5003
phone: (425) 454-3030 fax: (425) 454-6705 | www.rosenharbottle.com

The information provided has been obtained from sources believed reliable. While we do not doubt its accuracy, we have not verified and make no guarantee, warranty or representation about it. It is your sole responsibility to independently confirm its accuracy and completeness.