

# KENT BUSINESS CAMPUS

841 N Central Avenue, Kent, WA 98032

## CLASS A OFFICE

498 SF - 5,506 SF

\$21.00/SF, Full Service

### FEATURES:

- Frontage on N Central Avenue
- New Lobby Renovation & Exterior Paint Complete
- Quick Access to SR 167, SR 516 & Downtown Kent
- Three Blocks from Kent Station & Retail Amenities
- On-Site Amenities: Nail Salon & Teriyaki Restaurant
- Concrete, Steel & Glass Construction



For more information, contact:

**ROSEN~HARBOTTLE COMMERCIAL REAL ESTATE**

**Grant Rubenstein**

(425) 289-2220

grant@rosenharbottle.com

**Brian Stewart**

(425) 289-2222

brians@rosenharbottle.com

www.rosenharbottle.com

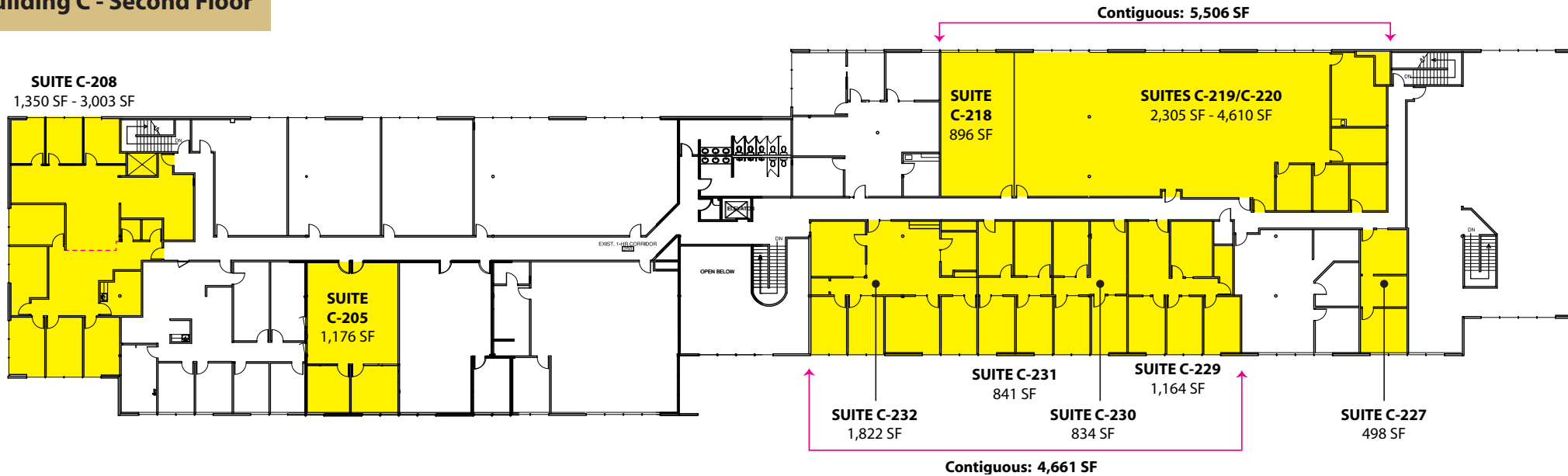
Rosen~Harbottle Commercial Real Estate | P.O. Box 5003 Bellevue, WA 98009-5003  
phone: (425) 454-3030 fax: (425) 454-6705 | www.rosenharbottle.com

The information provided has been obtained from sources believed reliable. While we do not doubt its accuracy, we have not verified and make no guarantee, warranty or representation about it. It is your sole responsibility to independently confirm its accuracy and completeness.

# KENT BUSINESS CAMPUS

841 N Central Avenue, Kent, WA 98032

## Building C - Second Floor



Suite	SF	Available
C-205	1,176 SF	Now
C-208	1,350 SF - 3,003 SF	30 days
C-218	896 SF - 5,506 SF	Now
C-219/220	2,305 SF - 5,506 SF	30 days
C-227	498 SF	Now
C-229	1,164 SF - 4,661 SF	30 days
C-230	834 SF - 4,661 SF	Now
C-231	841 SF - 4,661 SF	Now
C-232	1,822 SF - 4,661 SF	12/1/2016

## Monument Sign



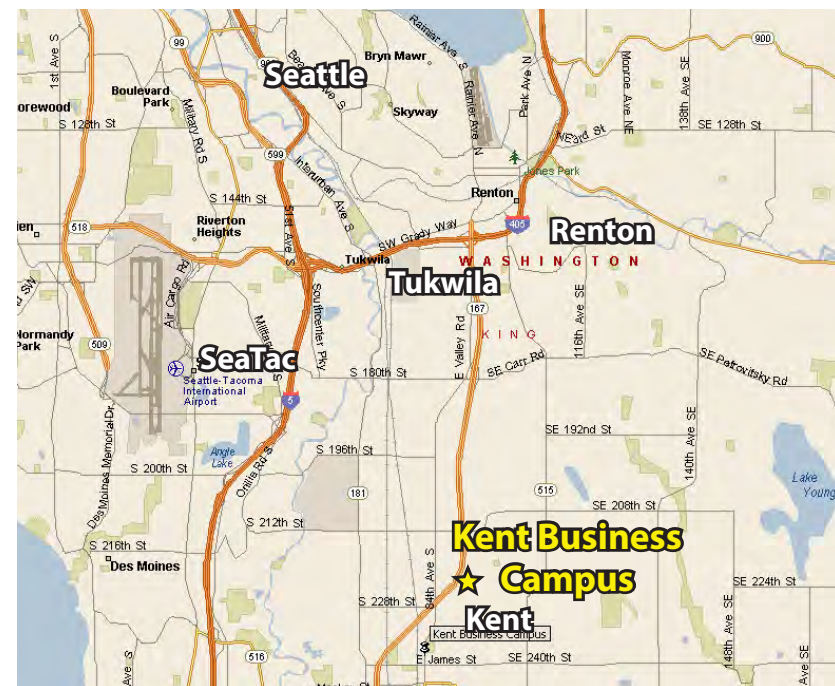
Rosen-Harbottle Commercial Real Estate | P.O. Box 5003 Bellevue, WA 98009-5003  
 phone: (425) 454-3030 fax: (425) 454-6705 | [www.rosenharbottle.com](http://www.rosenharbottle.com)

The information provided has been obtained from sources believed reliable. While we do not doubt its accuracy, we have not verified and make no guarantee, warranty or representation about it. It is your sole responsibility to independently confirm its accuracy and completeness.



# KENT BUSINESS CAMPUS

841 N Central Avenue, Kent, WA 98032



For more information, contact:

**ROSEN~HARBOTTLE  
COMMERCIAL REAL ESTATE**

**Grant Rubenstein**

(425) 289-2220

grant@rosenharbottle.com

**Brian Stewart**

(425) 289-2222

brians@rosenharbottle.com

www.rosenharbottle.com

Rosen-Harbottle Commercial Real Estate | P.O. Box 5003 Bellevue, WA 98009-5003

phone: (425) 454-3030 fax: (425) 454-6705 | [www.rosenharbottle.com](http://www.rosenharbottle.com)

The information provided has been obtained from sources believed reliable. While we do not doubt its accuracy, we have not verified and make no guarantee, warranty or representation about it. It is your sole responsibility to independently confirm its accuracy and completeness.