

EVERGREEN INDUSTRIAL CENTER

19510 144th Avenue NE, Woodinville, WA 98072



ENDCAP SPACE AVAILABLE



RARE WAREHOUSE AVAILABLE

Suite	Total SF	Office SF	Rent/ Month	NNN	Total/ Month	Avail
A-1	13,578 SF	3,928 SF	\$11,865	\$3,802	\$15,667	4/1/16
A-1/A-6	15,911 SF	4,515 SF	\$13,845	\$4,455	\$18,300	4/1/16
C-7	7,000 SF	641 SF	\$5,189	\$1,960	\$7,149	1/1/17

FEATURES:

- \$1.35/SF Office | \$0.68/SF Whse
- Visibility Facing 144th Avenue NE
- Quick Access to SR 522 & I-405
- DH & GL Loading
- 20' - 24' Clear Height
- Sprinklered & 3-Phase Power
- Ideal Uses: Distribution, Manufacturing, Storage, Winery, & Brewery (Recreation Use Considered)



For more information, contact:

**ROSEN~HARBOTTLE
COMMERCIAL REAL ESTATE**

Caleb Farnworth, CCIM
(425) 289-2235
calebf@rosenharbottle.com

www.rosenharbottle.com

Rosen~Harbottle Commercial Real Estate | P.O. Box 5003 Bellevue, WA 98009-5003
phone: (425) 454-3030 fax: (425) 454-6705 | www.rosenharbottle.com

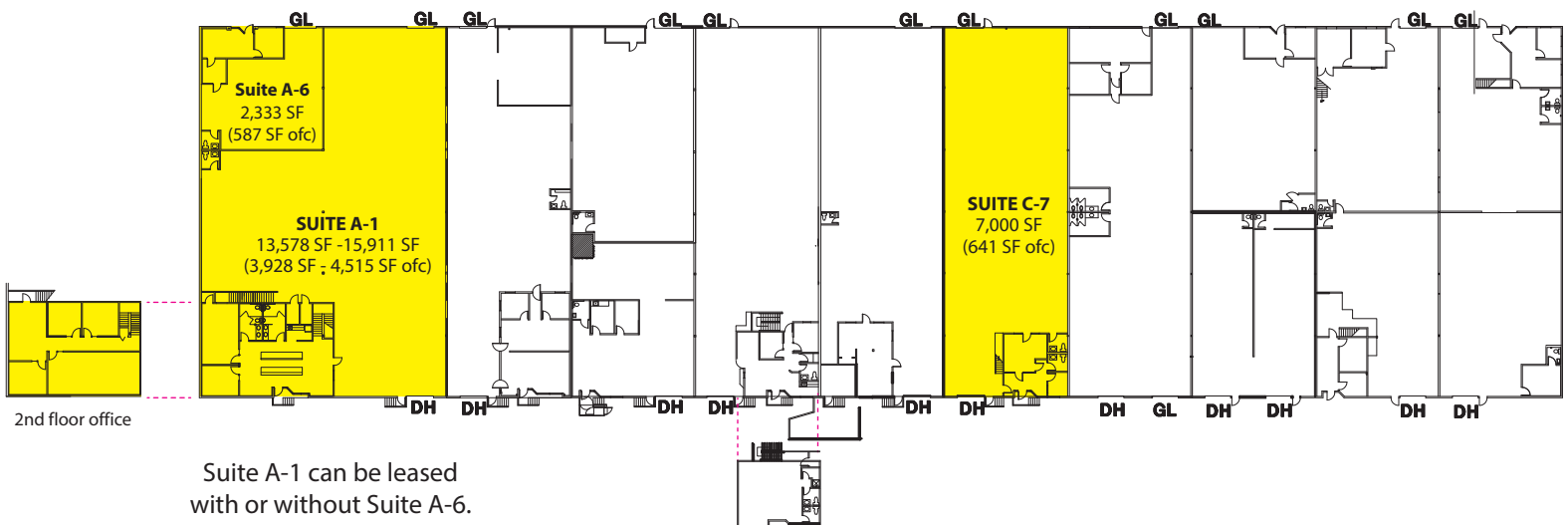
The information provided has been obtained from sources believed reliable. While we do not doubt its accuracy, we have not verified and make no guarantee, warranty or representation about it. It is your sole responsibility to independently confirm its accuracy and completeness.

EVERGREEN INDUSTRIAL CENTER

19510 144th Avenue NE, Woodinville, WA 98072

SPACE AVAILABLE

Suite	Square Footage
A-1	13,578 SF (3,928 SF ofc)
A-1/A-6	15,911 SF (4,515 SF ofc)
C-7	7,000 SF (641 SF ofc)



For more information, contact:

ROSEN~HARBOTTLE COMMERCIAL REAL ESTATE

Caleb Farnworth, CCIM

(425) 289-2235

calebf@rosenharbottle.com

www.rosenharbottle.com

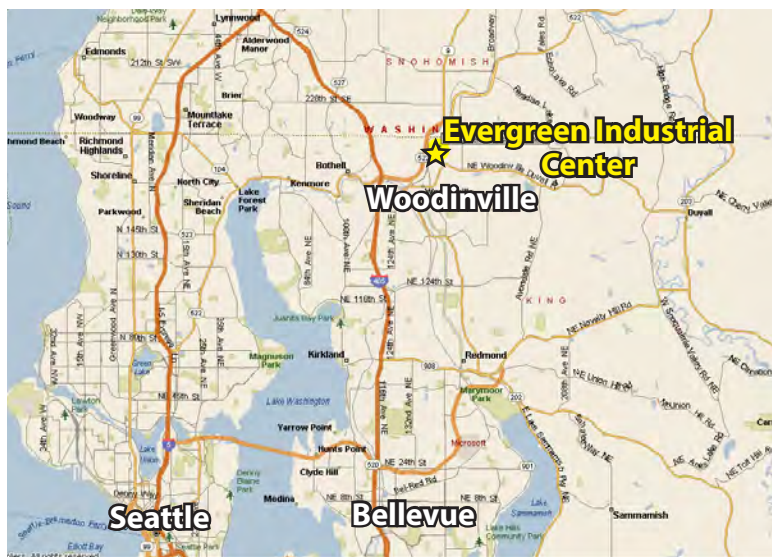
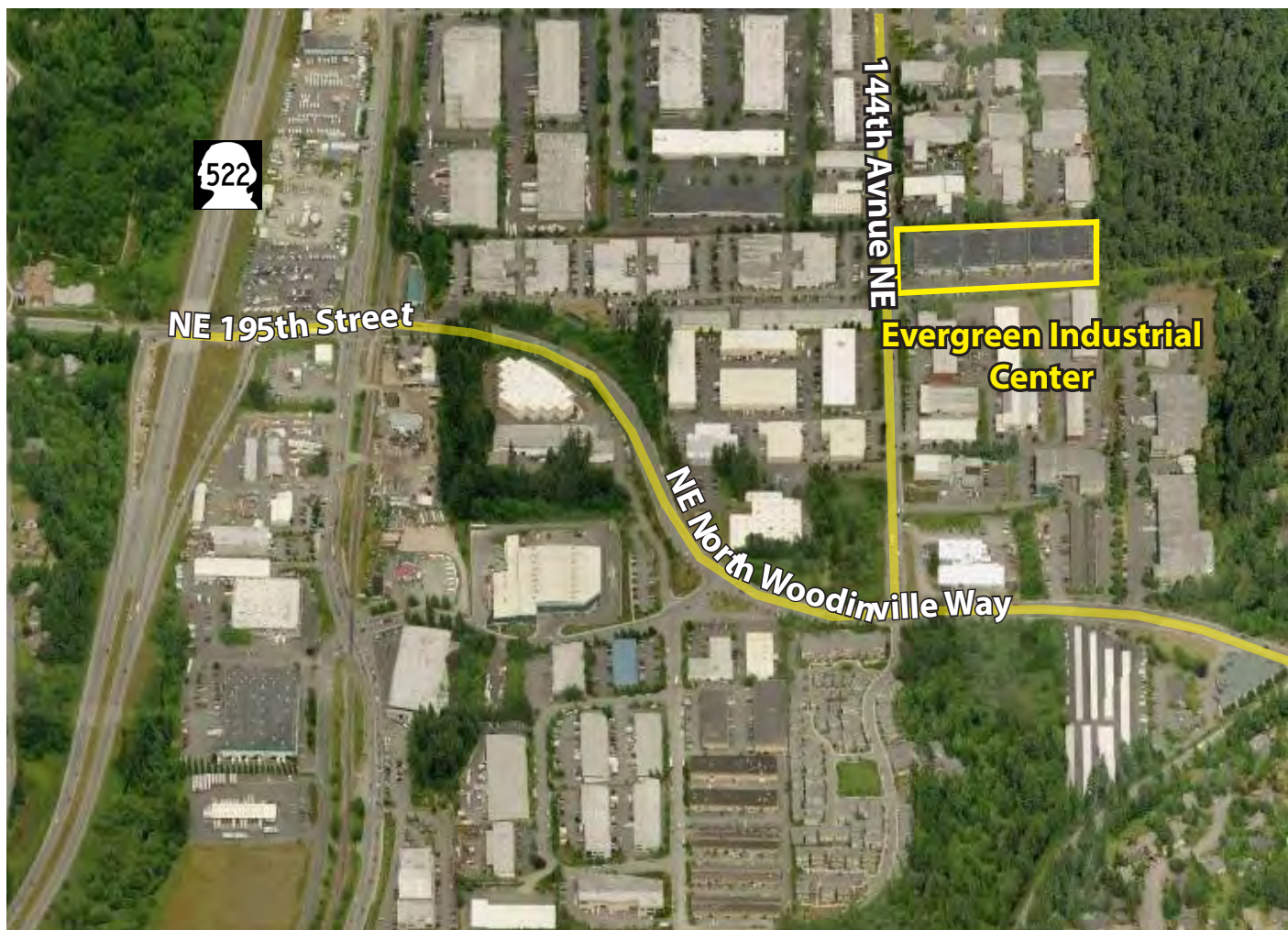
Rosen-Harbottle Commercial Real Estate | P.O. Box 5003 Bellevue, WA 98009-5003
phone: (425) 454-3030 fax: (425) 454-6705 | www.rosenharbottle.com

The information provided has been obtained from sources believed reliable. While we do not doubt its accuracy, we have not verified and make no guarantee, warranty or representation about it. It is your sole responsibility to independently confirm its accuracy and completeness.

EVERGREEN INDUSTRIAL CENTER

19510 144th Avenue NE, Woodinville, WA 98072

LOCATION INFORMATION



For more information, contact:

**ROSEN~HARBOTTLE
COMMERCIAL REAL ESTATE**

Caleb Farnworth, CCIM
(425) 289-2235
calebf@rosenharbottle.com

www.rosenharbottle.com

Rosen~Harbottle Commercial Real Estate | P.O. Box 5003 Bellevue, WA 98009-5003
phone: (425) 454-3030 fax: (425) 454-6705 | www.rosenharbottle.com

The information provided has been obtained from sources believed reliable. While we do not doubt its accuracy, we have not verified and make no guarantee, warranty or representation about it. It is your sole responsibility to independently confirm its accuracy and completeness.