

OFFICE  
LEASE



# MEADOW CREEK OFFICE PARK

22500 - 22619 SE 64th Place | Issaquah, WA

**Brian Stewart**

425.289.2222

brians@rosenharbottle.com

425.454.3030  
rosenharbottle.com

PO Box 5003  
Bellevue, WA 98009 - 5003





# CLASS A OFFICE SPACES

**716 SF - 2,024 SF Available**

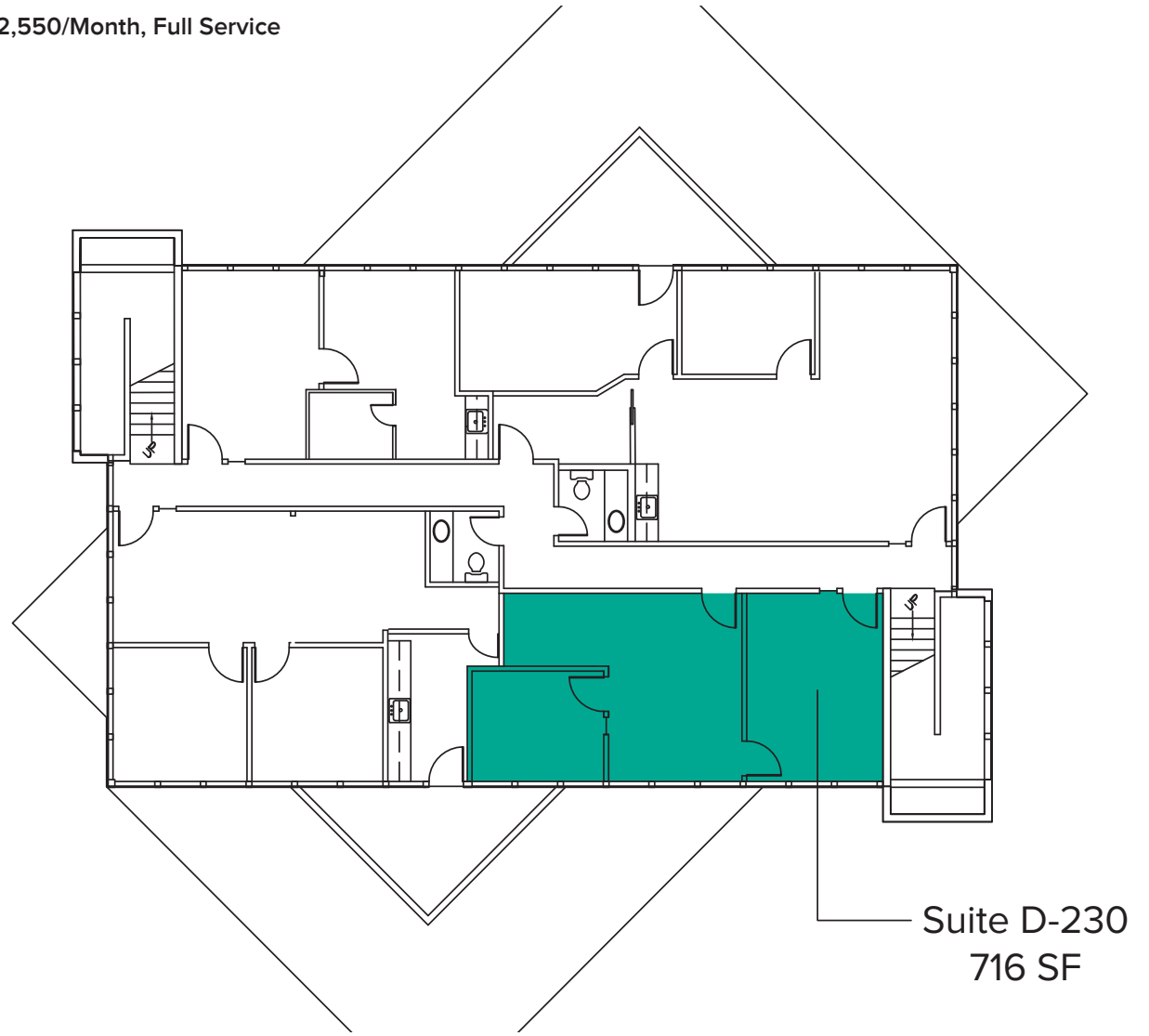
## OFFICE PARK DETAILS:

- Minutes from Costco Headquarters
- Amazing Location off I-90 at Front St./E Lake Sammamish Pkwy
- Nearby Amenities Include Retailers, Grocers, Restaurants, Hospital & Parks
- Park-Like, Campus Setting with Free Surface Parking

# BUILDING D (22526) FLOOR PLAN

Suite	Square Feet	Rent
D-230	716 SF	\$2,550/Month, Full Service

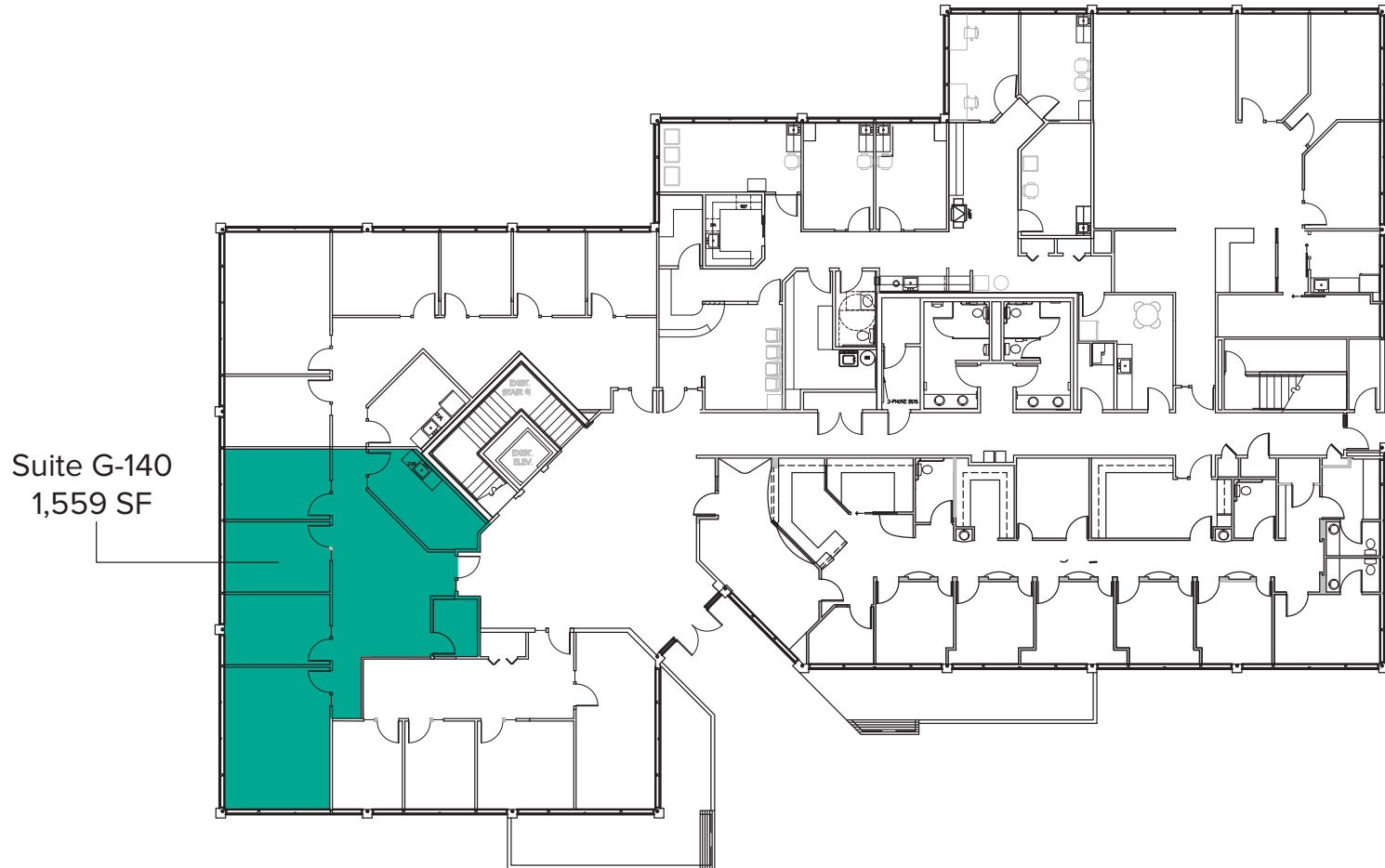
Notes: 1 Private Office, Reception, and Open Work Space.



# BUILDING G (22500) FLOOR PLAN

Suite	Square Feet	Rent
G-140	1,559 SF	\$28.00/SF, NNN

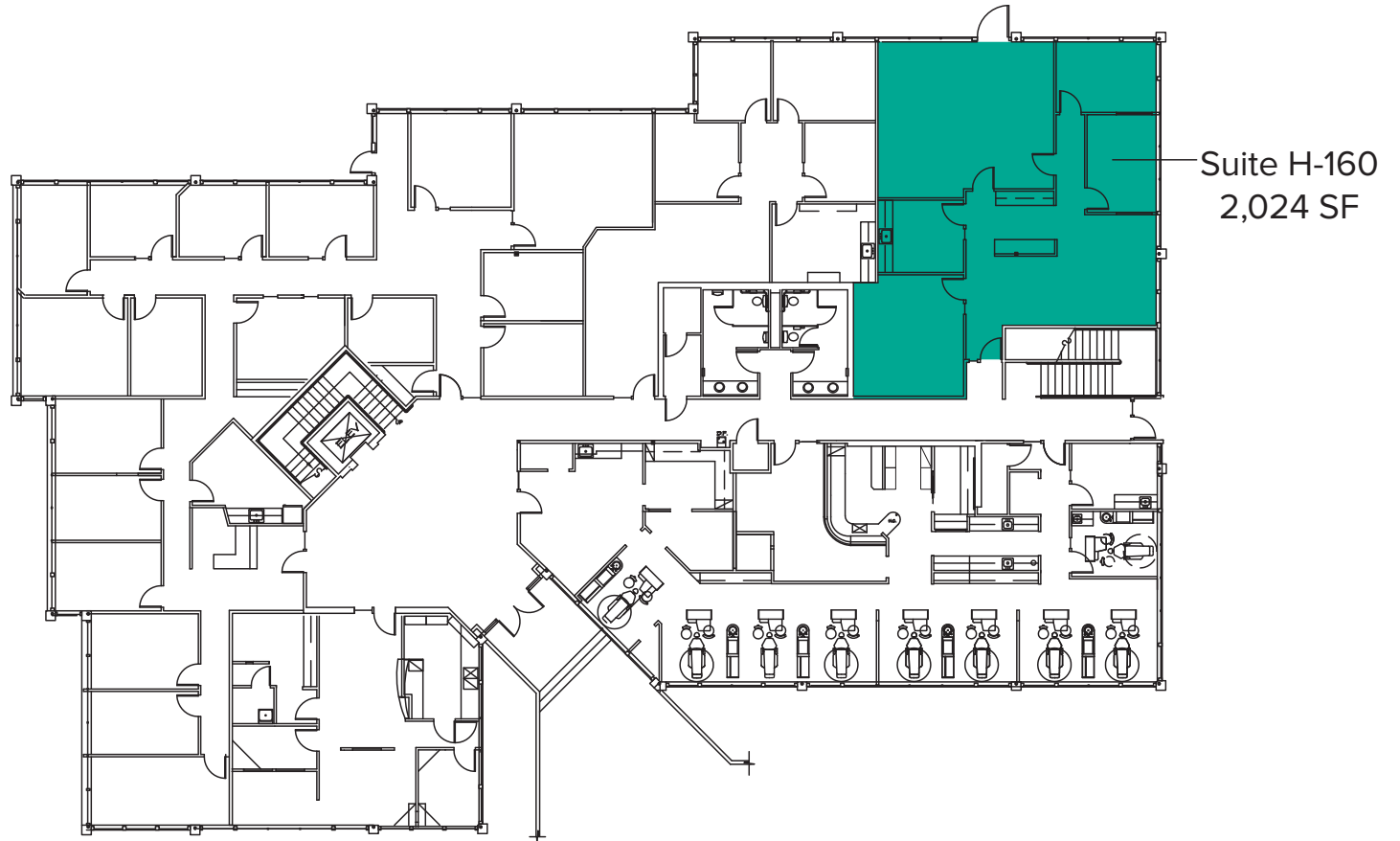
Notes: 3 Private Offices, 1 Conference Room, Break Room, Storage, and Open Work Space.  
Available 10/1/2020



# BUILDING H (22525) FLOOR PLAN

Suite	Square Feet	Rent
H-160	2,024 SF	\$28.00/SF, NNN

Notes: Direct and Lobby Entrances. 2 Private Offices, 1 Conference Room, Break Room, and Open Work Space. Available with 30 days' notice.



# SITE PLAN



# LOCATION MAP

