

OFC/WHSE  
LEASE



## EASTLAKE BUSINESS PARK

18336-18398 Redmond-Fall City Road | Redmond, WA 98052

**Caleb Farnworth, CCIM**

425.289.2235

calebf@rosenharbottle.com

425.454.3030  
rosenharbottle.com

PO Box 5003  
Bellevue, WA 98009 - 5003







# OFFICE/WAREHOUSE SPACES AVAILABLE

**1,376 SF - 2,197 SF**

## BUILDING DETAILS:

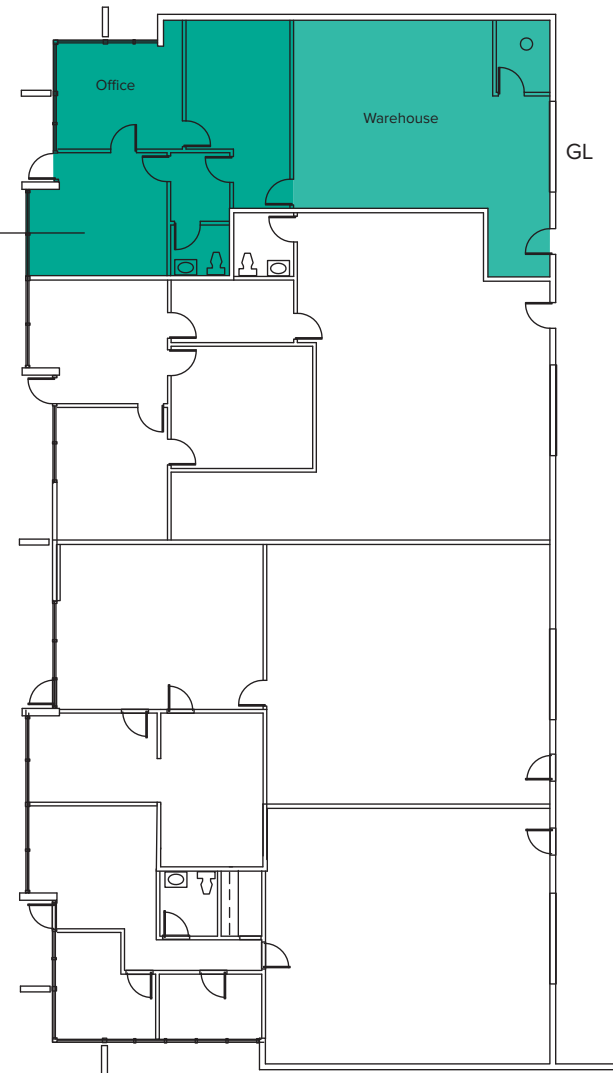
- Professional, Business Park Setting
- Quick Access to SR 520, Union Hill & Downtown Redmond
- Nearby Amenities Include Home Depot, Whole Foods, Chipotle, Target, Kohl's, Costco & More
- Located Minutes From Future Light Rail Stations

# BUILDING B FLOOR PLAN

## SUITE FEATURES:

- **Available Now**
- **1,376 SF (738 SF ofc)**
- **\$1,895/Month, NNN**
- 1 Private Office
- 1 Conference Room
- 1 Restroom
- Reception Area
- 1 GL Roll-up Loading Door
- 14' - 16' Clear Height in Warehouse

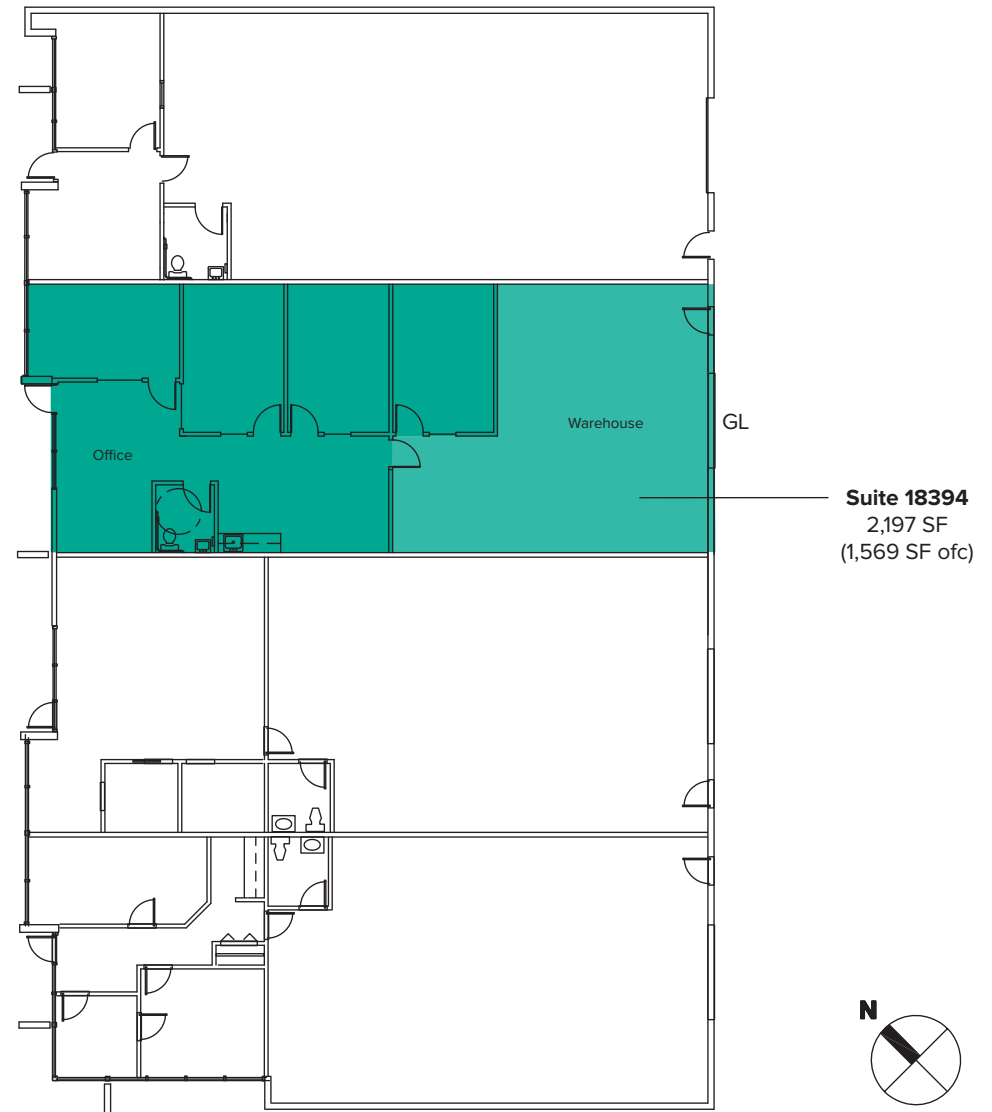
Suite 18336  
1,376 SF  
(738 SF ofc)



# BUILDING D FLOOR PLAN

## SUITE FEATURES:

- **Available 11/1/2019**
- **2,197 SF (1,569 SF ofc)**
- **\$3,300/Month, NNN**
- 5 Private Offices
- Kitchenette
- 1 Restroom
- Open Office Area
- Reception Area
- 1 GL Roll-up Loading Door
- 14' - 16' Clear Height in Warehouse





# LOCATION MAP

