

MEADOW CREEK OFFICE PARK

22500-22619 SE 64th Place, Issaquah, WA 98027



CLASS A OFFICE / MEDICAL SPACE

1,612 SF Available

\$29.00/SF, NNN - MEDICAL

\$25.00/SF, NNN - OFFICE

FEATURES:

- Minutes from Costco Headquarters
- Class A Finishes
- Amazing Location off I-90 at Front St./E Lake Sammamish Pkwy
- Nearby Amenities Include Retailers, Grocers, Restaurants, Hospital & Parks
- Private Balcony & Free Surface Parking
- Park-Like, Campus Setting

For more information, contact:

**ROSEN~HARBOTTLE
COMMERCIAL REAL ESTATE**

Brian Stewart

(425) 289-2222

brians@rosenharbottle.com

www.rosenharbottle.com

Rosen~Harbottle Commercial Real Estate | P.O. Box 5003 Bellevue, WA 98009-5003
phone: (425) 454-3030 fax: (425) 454-6705 | www.rosenharbottle.com

The information provided has been obtained from sources believed reliable. While we do not doubt its accuracy, we have not verified and make no guarantee, warranty or representation about it. It is your sole responsibility to independently confirm its accuracy and completeness.



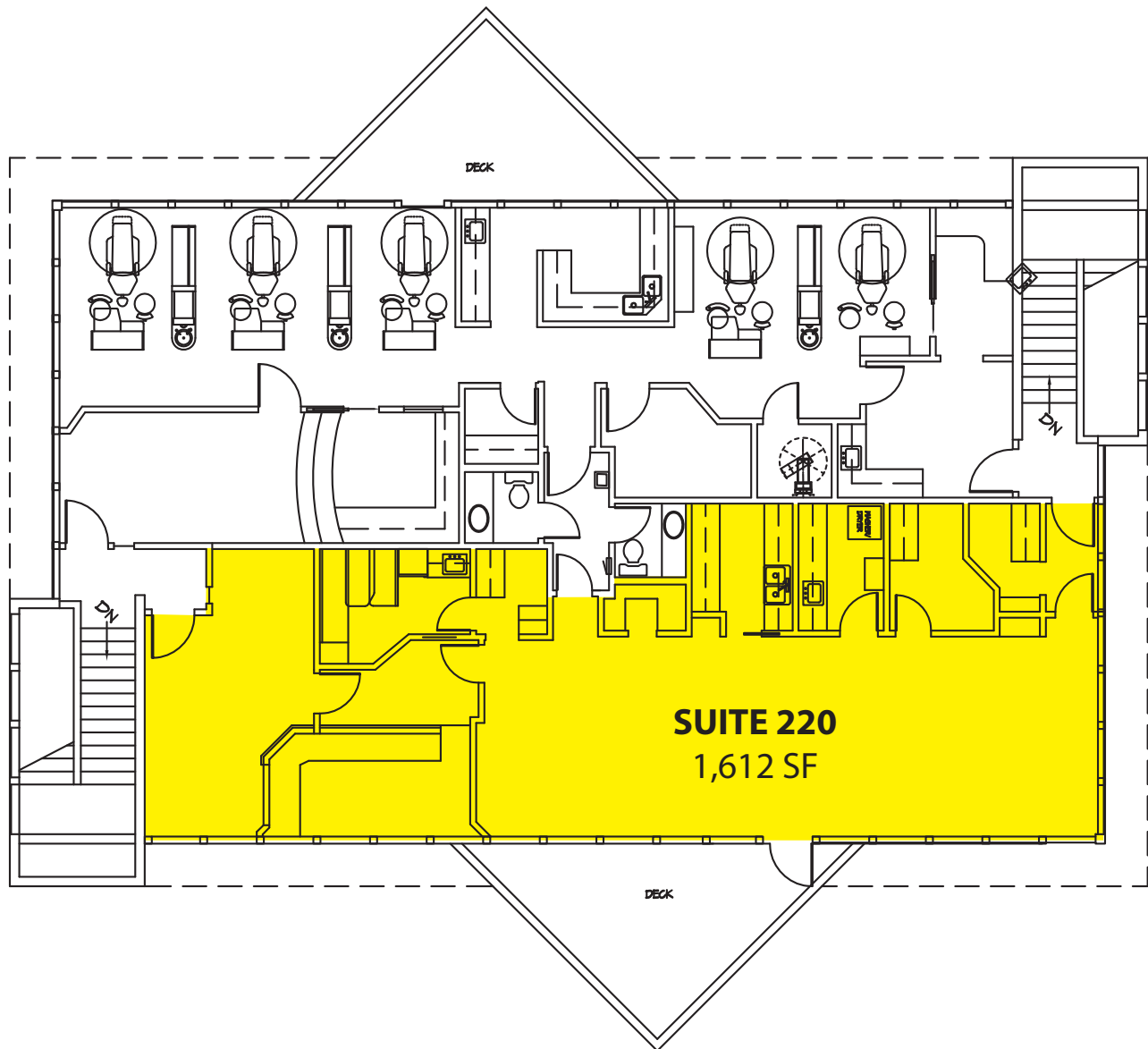
MEADOW CREEK OFFICE PARK

22500-22619 SE 64th Place, Issaquah, WA 98027

Building B - Second Floor

SUITE	SF
Suite 220	1,612 SF

Notes: Full dental build out. Air compressors also available. Previous tenant had 5 chairs in place.



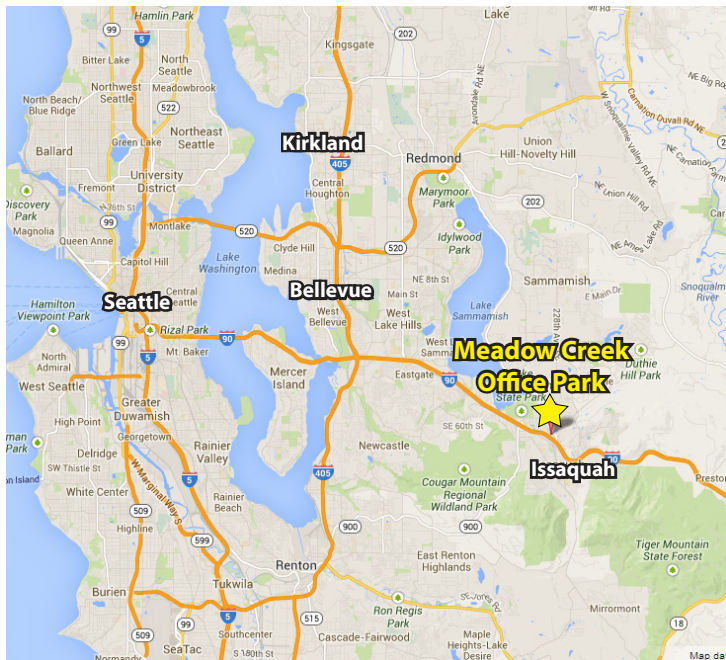
Rosen~Harbottle Commercial Real Estate | P.O. Box 5003 Bellevue, WA 98009-5003
phone: (425) 454-3030 fax: (425) 454-6705 | www.rosenharbottle.com

The information provided has been obtained from sources believed reliable. While we do not doubt its accuracy, we have not verified and make no guarantee, warranty or representation about it. It is your sole responsibility to independently confirm its accuracy and completeness.



MEADOW CREEK OFFICE PARK

22500-22619 SE 64th Place, Issaquah, WA 98027



For more information, contact:

**ROSEN~HARBOTTLE
COMMERCIAL REAL ESTATE**

Brian Stewart
(425) 289-2222

brians@rosenharbottle.com

www.rosenharbottle.com

Rosen~Harbottle Commercial Real Estate | P.O. Box 5003 Bellevue, WA 98009-5003
phone: (425) 454-3030 fax: (425) 454-6705 | www.rosenharbottle.com

The information provided has been obtained from sources believed reliable. While we do not doubt its accuracy, we have not verified and make no guarantee, warranty or representation about it. It is your sole responsibility to independently confirm its accuracy and completeness.