

HILLSIDE PLAZA SHOPPING CENTER

2000 - 2222 S 314th Street, Federal Way, WA 98003



FLEXIBLE SPACE CONFIGURATIONS!

920 SF - 18,780 SF Available

\$18.50/SF, NNN

FEATURES:

- Available Space Can Accommodate Any Size Requirements
- Blocks Away from The Commons, I-5, Hwy 99 & Transit Center
- Directly Adjacent to Performing Arts & Events Center
- Opening Summer 2017
- Great Tenant Mix: Gene Juarez, CSL Plasma, Cortiva Institute, AAA, Nail Salon & Beauty Salon
- Densely Populated Surrounding Neighborhoods

For more information, contact:

ROSEN~HARBOTTLE
COMMERCIAL REAL ESTATE

Grant Rubenstein
(425) 289-2220
grant@rosenharbottle.com

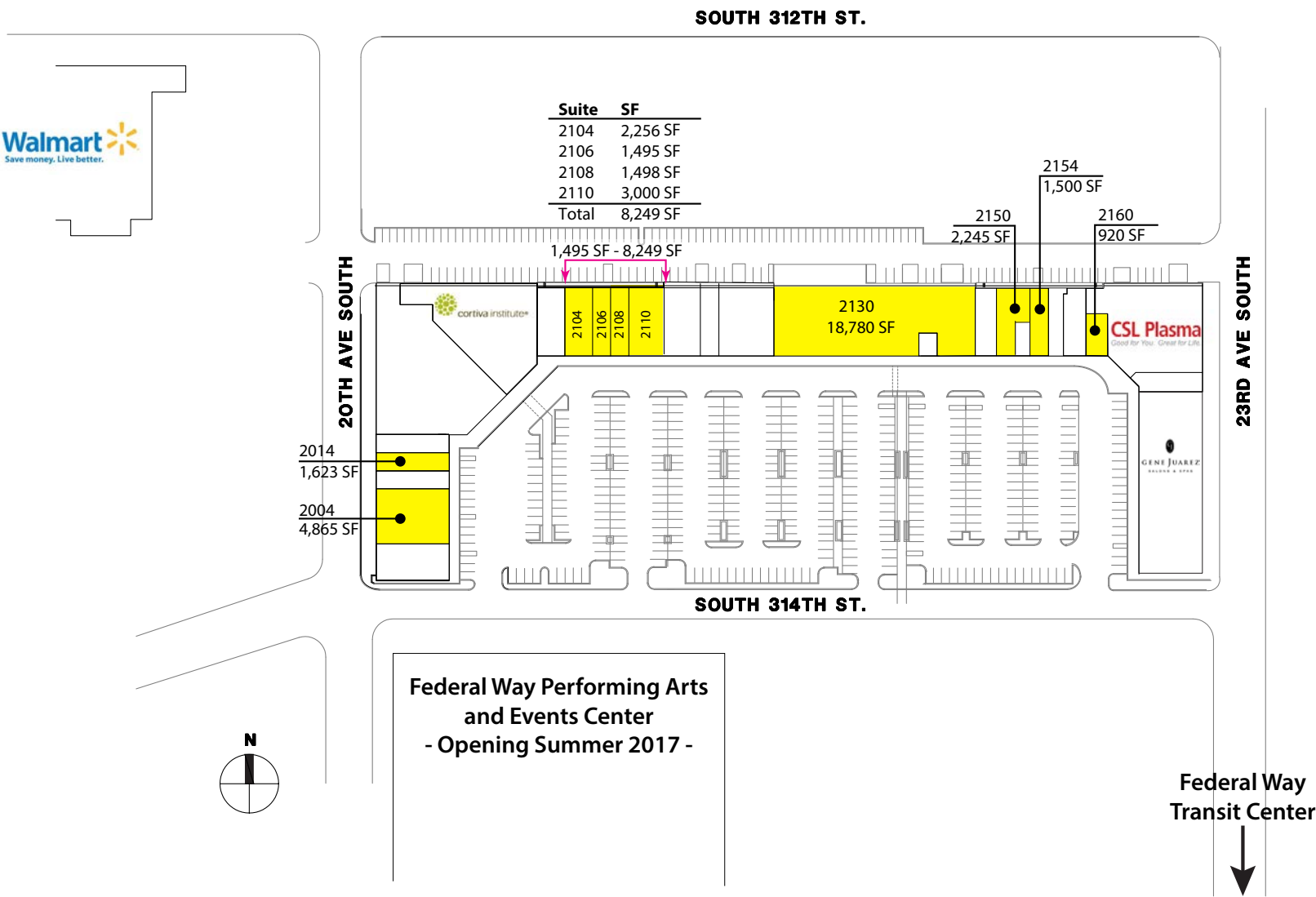
www.rosenharbottle.com

Rosen~Harbottle Commercial Real Estate | P.O. Box 5003 Bellevue, WA 98009-5003
phone: (425) 454-3030 fax: (425) 454-6705 | www.rosenharbottle.com

The information provided has been obtained from sources believed reliable. While we do not doubt its accuracy, we have not verified and make no guarantee, warranty or representation about it. It is your sole responsibility to independently confirm its accuracy and completeness.

HILLSIDE PLAZA SHOPPING CENTER

2000 - 2222 S 314th Street, Federal Way, WA 98003



Rosen~Harbottle Commercial Real Estate | P.O. Box 5003 Bellevue, WA 98009-5003
 phone: (425) 454-3030 fax: (425) 454-6705 | www.rosenharbottle.com

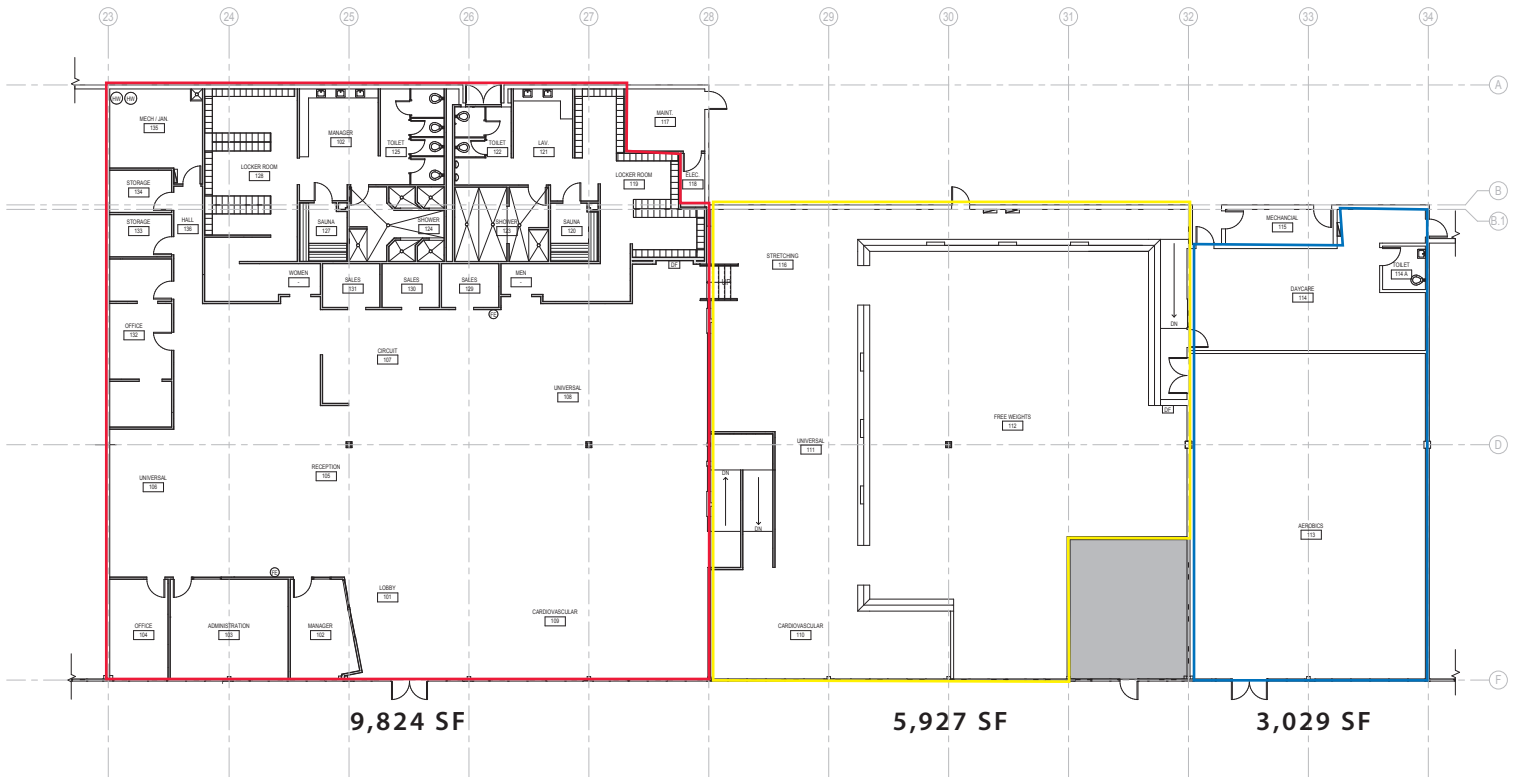
The information provided has been obtained from sources believed reliable. While we do not doubt its accuracy, we have not verified and make no guarantee, warranty or representation about it. It is your sole responsibility to independently confirm its accuracy and completeness.



HILLSIDE PLAZA SHOPPING CENTER

2000 - 2222 S 314th Street, Federal Way, WA 98003

24 Hour Fitness Space



FEATURES:

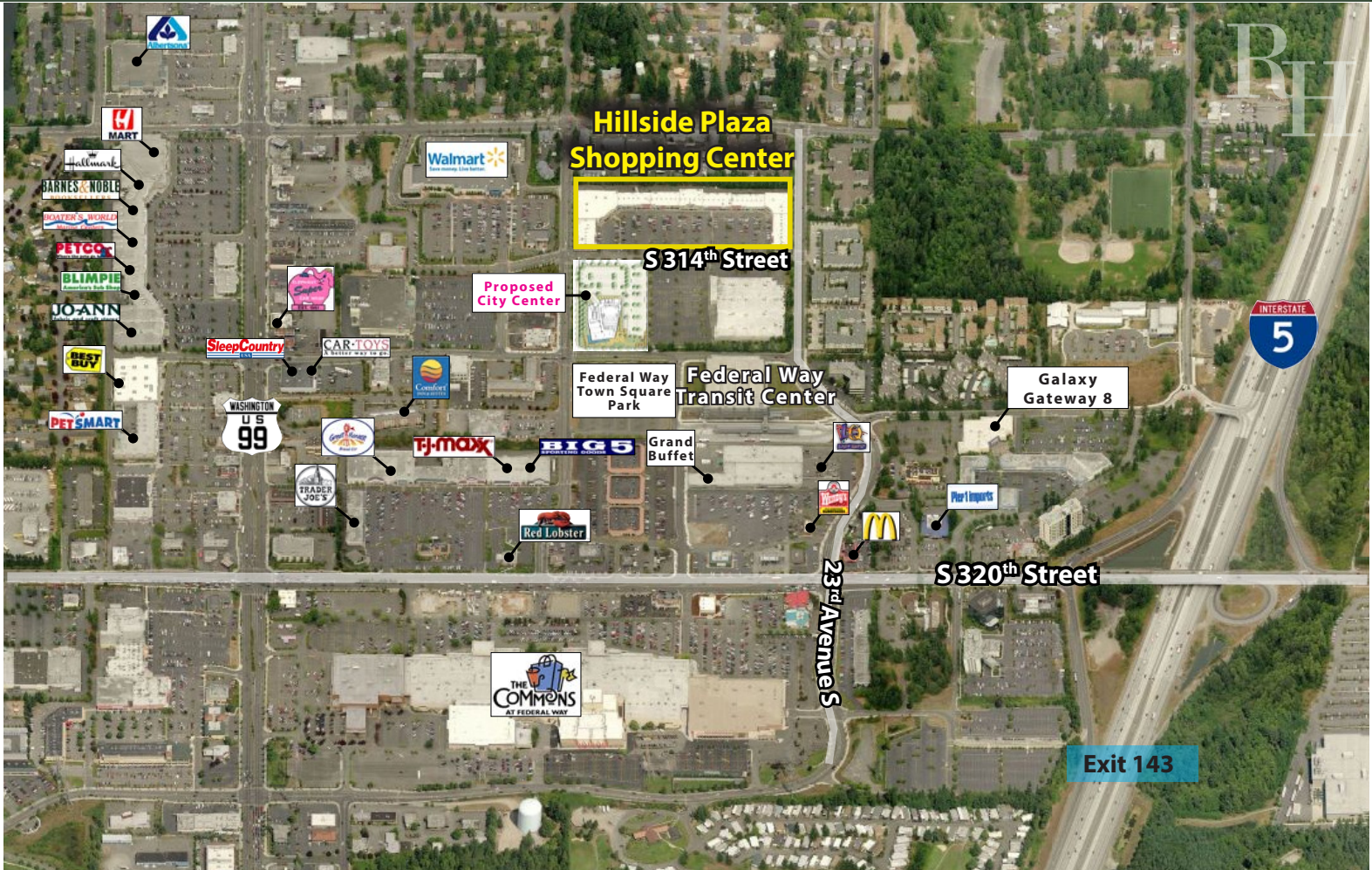
- 18,780 SF (divisible)
- Private Offices
- Women's and Men's Locker Rooms
 - Includes Showers and Sauna
- Daycare
- Aerobics Room

Rosen~Harbottle Commercial Real Estate | P.O. Box 5003 Bellevue, WA 98009-5003
phone: (425) 454-3030 fax: (425) 454-6705 | www.rosenharbottle.com

The information provided has been obtained from sources believed reliable. While we do not doubt its accuracy, we have not verified and make no guarantee, warranty or representation about it. It is your sole responsibility to independently confirm its accuracy and completeness.

HILLSIDE PLAZA SHOPPING CENTER

2000 - 2222 S 314th Street, Federal Way, WA 98003



For more information, contact:

**ROSEN~HARBOTTLE
COMMERCIAL REAL ESTATE**

Grant Rubenstein
(425) 289-2220
grant@rosenharbottle.com

www.rosenharbottle.com

Rosen~Harbottle Commercial Real Estate | P.O. Box 5003 Bellevue, WA 98009-5003
phone: (425) 454-3030 fax: (425) 454-6705 | www.rosenharbottle.com

The information provided has been obtained from sources believed reliable. While we do not doubt its accuracy, we have not verified and make no guarantee, warranty or representation about it. It is your sole responsibility to independently confirm its accuracy and completeness.

