

# GATEWAY POINTE BUSINESS PARK

2601-2715 Jahn Avenue NW, Gig Harbor, WA 98335

**LOW PRICES IN GIG HARBOR**



**IDEAL USES: Office, Medical, Showroom, Fitness, Salon, Winery/Brewery, Educational, Boutique Store**

**764 SF - 10,380 SF Available**

**\$14.50 - \$16.50/SF, MODIFIED GROSS**

## **FEATURES:**

- Lease or Purchase
- Great Visibility to 70,000+ Cars/Day on Hwy 16
- Quick Access to Tacoma - Half Mile from Off-Ramp
- Buildings Include Heating & Air Conditioning
- Tall Ceilings with Sky Lights & Balconies
- Extensive Window Line Provides Abundant Natural Light
- **Building Available for Purchase:**
  - Building D: \$1,713,000 (\$165/SF)

For more information, contact:

KELLER WILLIAMS

**Mike Armanious, CCIM**

(253) 988-6115

marmanious@kw.com

ROSEN~HARBOTTLE CRE

**Caleb Farnworth, CCIM**

(425) 289-2235

calebf@rosenharbottle.com

Keller Williams | 7525 28th Street W, University Place, WA  
phone: (253) 460-8640 fax: (253) 460-8650 | www.kw.com

The information provided has been obtained from sources believed reliable. While we do not doubt its accuracy, we have not verified and make no guarantee, warranty or representation about it. It is your sole responsibility to independently confirm its accuracy and completeness.

# GATEWAY POINTE BUSINESS PARK

2601-2715 Jahn Avenue NW, Gig Harbor, WA 98335

## Availability

- Click on Suite Number to jump to Floor Plan -

| SUITE                     | SQUARE FEET | CONTIGUOUS | RENT/MO  | \$/SF   | AVAILABLE |
|---------------------------|-------------|------------|----------|---------|-----------|
| <a href="#">A-06</a>      | 1,538       |            | \$2,115  | \$16.50 | NOW       |
| <a href="#">C-05/06</a>   | 1,548       |            | \$2,129  | \$16.50 | 30 DAYS   |
| <a href="#">C-08/09</a>   | 1,552       |            | \$1,875  | \$14.50 | NOW       |
| <a href="#">D-01</a>      | 2,948       |            | \$4,054  | \$16.50 | NOW       |
| <a href="#">D-07</a>      | 2,279       | 5,140      | \$3,134  | \$14.50 | NOW       |
| <a href="#">D-10</a>      | 2,861       | 5,140      | \$3,457  | \$14.50 | NOW       |
| <a href="#">E-04</a>      | 1,709       |            | \$2,350  | \$16.50 | 10/1/2017 |
| <a href="#">E-07</a>      | 1,514       | 2,278      | \$1,829  | \$14.50 | NOW       |
| <a href="#">E-08</a>      | 764         | 2,278      | \$923    | \$14.50 | NOW       |
| <a href="#">E-12</a>      | 797         |            | \$930    | \$14.50 | NOW       |
| <a href="#">F-10</a>      | 1,756       |            | \$2,122  | \$14.50 | NOW       |
| <a href="#">Full Bldg</a> | 10,380      |            | \$12,975 | \$15.00 | 60 DAYS   |

Keller Williams | 7525 28th Street W, University Place, WA  
phone: (253) 460-8640 fax: (253) 460-8650 | www.kw.com

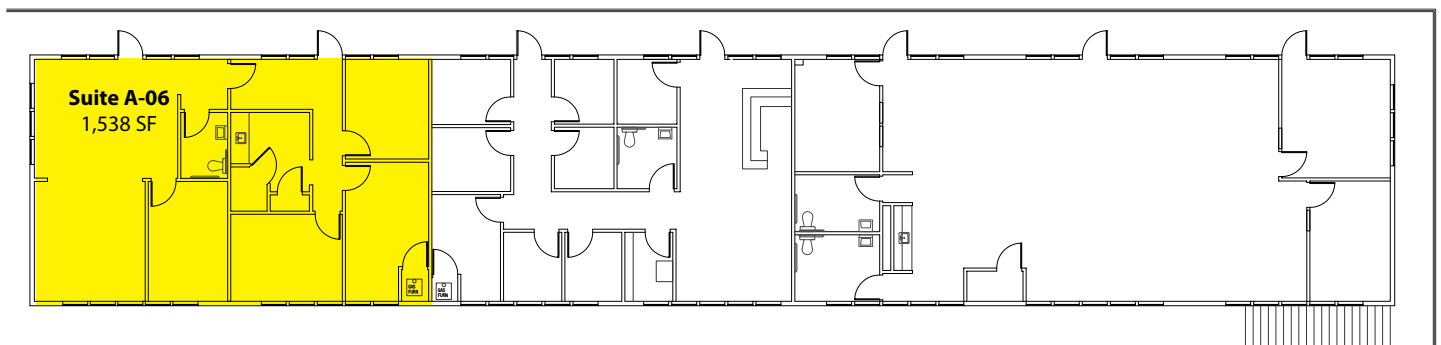
The information provided has been obtained from sources believed reliable. While we do not doubt its accuracy, we have not verified and make no guarantee, warranty or representation about it. It is your sole responsibility to independently confirm its accuracy and completeness.

# GATEWAY POINTE BUSINESS PARK

2601-2715 Jahn Avenue NW, Gig Harbor, WA 98335

## Building A - 2<sup>nd</sup> Floor

| Suite | Square Footage |
|-------|----------------|
| A-06  | 1,538 SF       |



Keller Williams | 7525 28th Street W, University Place, WA  
phone: (253) 460-8640 fax: (253) 460-8650 | [www.kw.com](http://www.kw.com)

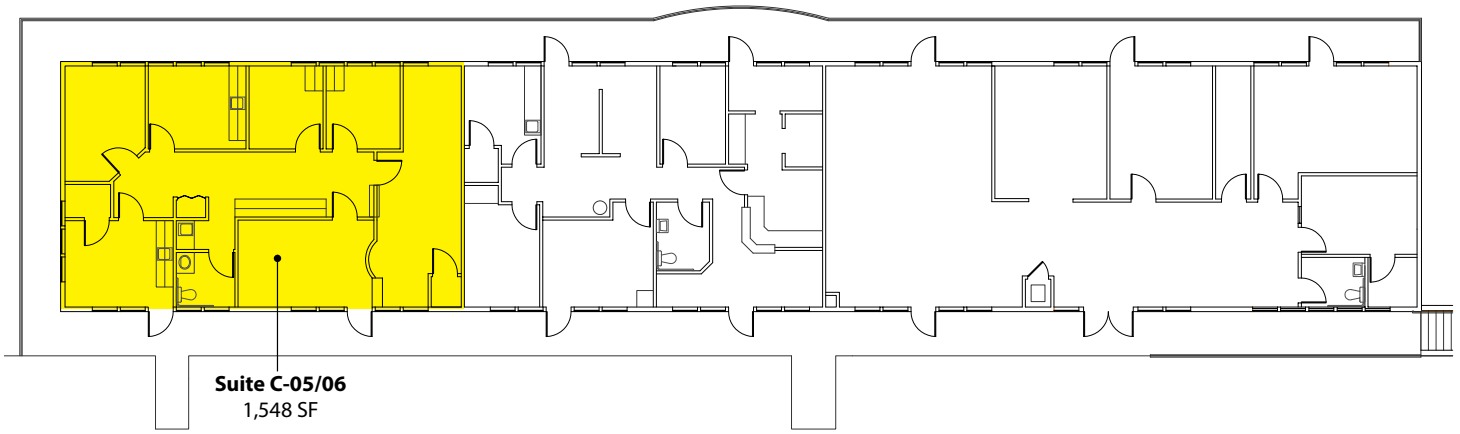
The information provided has been obtained from sources believed reliable. While we do not doubt its accuracy, we have not verified and make no guarantee, warranty or representation about it. It is your sole responsibility to independently confirm its accuracy and completeness.

# GATEWAY POINTE BUSINESS PARK

2601-2715 Jahn Avenue NW, Gig Harbor, WA 98335

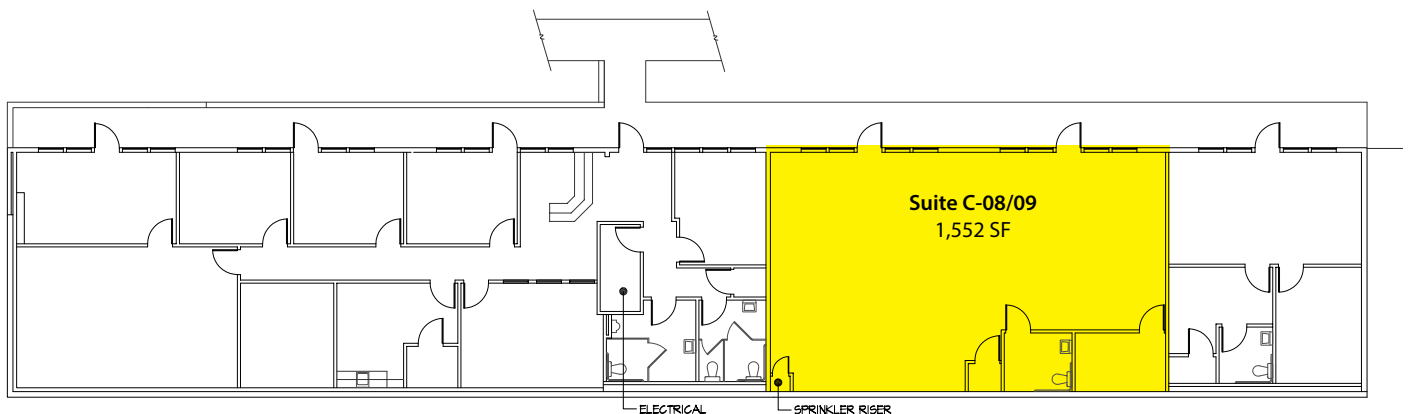
## Building C - 2<sup>nd</sup> Floor

| Suite   | Square Footage |
|---------|----------------|
| C-05/06 | 1,548 SF       |



## Building C - 1<sup>st</sup> Floor

| Suite   | Square Footage |
|---------|----------------|
| C-08/09 | 1,552 SF       |



Keller Williams | 7525 28th Street W, University Place, WA  
phone: (253) 460-8640 fax: (253) 460-8650 | [www.kw.com](http://www.kw.com)

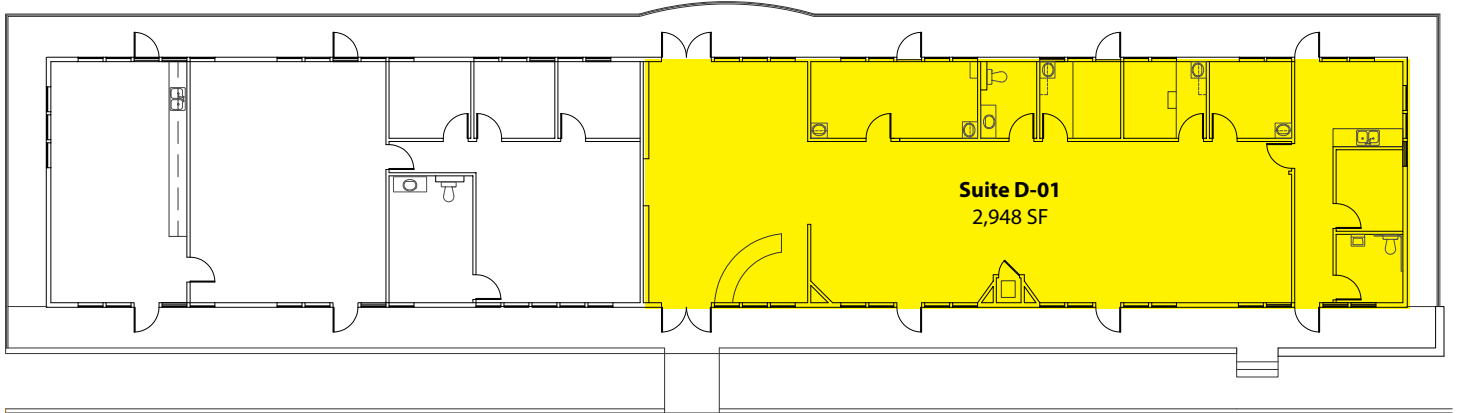
The information provided has been obtained from sources believed reliable. While we do not doubt its accuracy, we have not verified and make no guarantee, warranty or representation about it. It is your sole responsibility to independently confirm its accuracy and completeness.

# GATEWAY POINTE BUSINESS PARK

2601-2715 Jahn Avenue NW, Gig Harbor, WA 98335

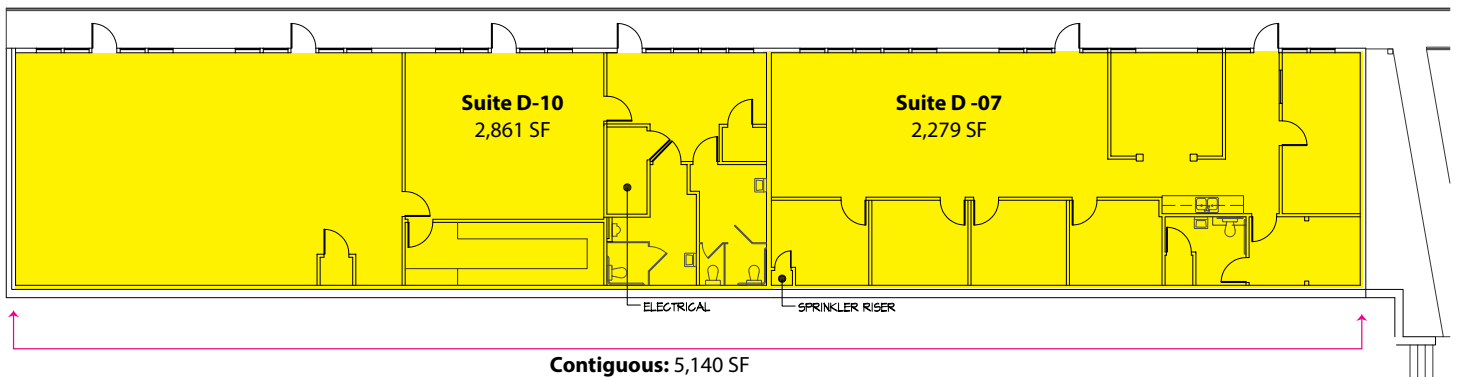
## Building D - 2<sup>nd</sup> Floor

| Suite | Square Footage |
|-------|----------------|
| D-01  | 2,948 SF       |



## Building D - 1<sup>st</sup> Floor

| Suite      | Square Footage |
|------------|----------------|
| D-07       | 2,279 SF       |
| D-10       | 2,861 SF       |
| Contiguous | 5,140 SF       |



Keller Williams | 7525 28th Street W, University Place, WA  
phone: (253) 460-8640 fax: (253) 460-8650 | [www.kw.com](http://www.kw.com)

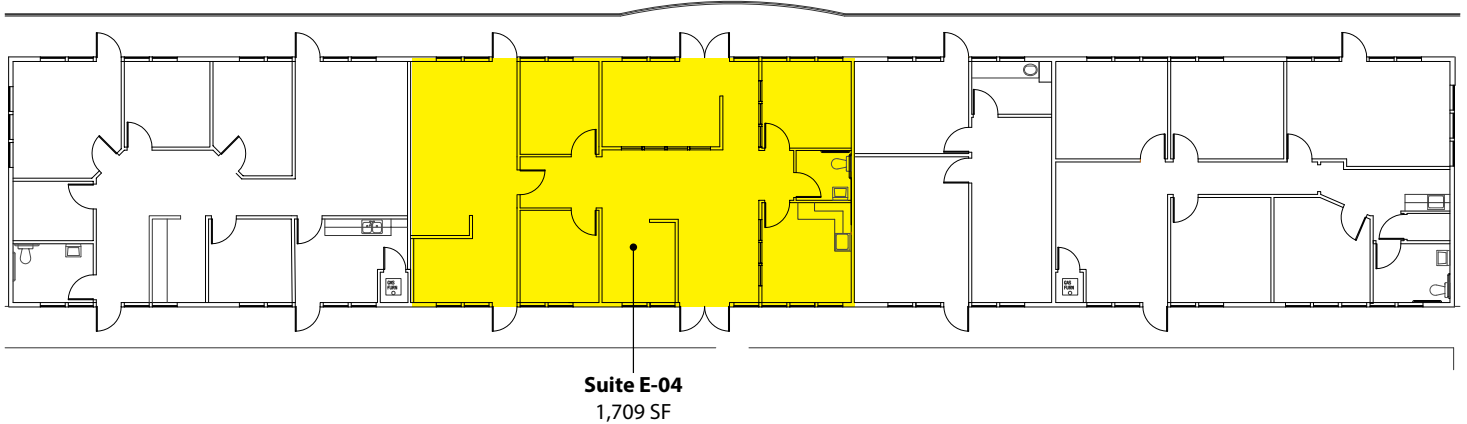
The information provided has been obtained from sources believed reliable. While we do not doubt its accuracy, we have not verified and make no guarantee, warranty or representation about it. It is your sole responsibility to independently confirm its accuracy and completeness.

# GATEWAY POINTE BUSINESS PARK

2601-2715 Jahn Avenue NW, Gig Harbor, WA 98335

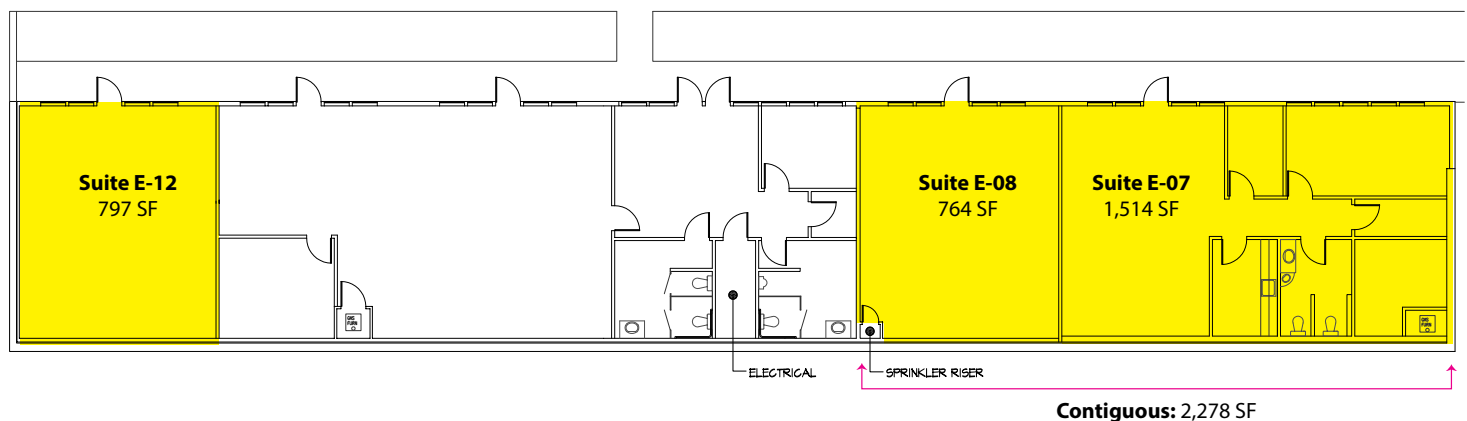
## Building E - 2<sup>nd</sup> Floor

| Suite | Square Footage |
|-------|----------------|
| E-04  | 1,709 SF       |



## Building E - 1<sup>st</sup> Floor

| Suite      | Square Footage |
|------------|----------------|
| E-07       | 1,514 SF       |
| E-08       | 764 SF         |
| E-12       | 797 SF         |
| Contiguous | 2,278SF        |



Keller Williams | 7525 28th Street W, University Place, WA  
phone: (253) 460-8640 fax: (253) 460-8650 | [www.kw.com](http://www.kw.com)

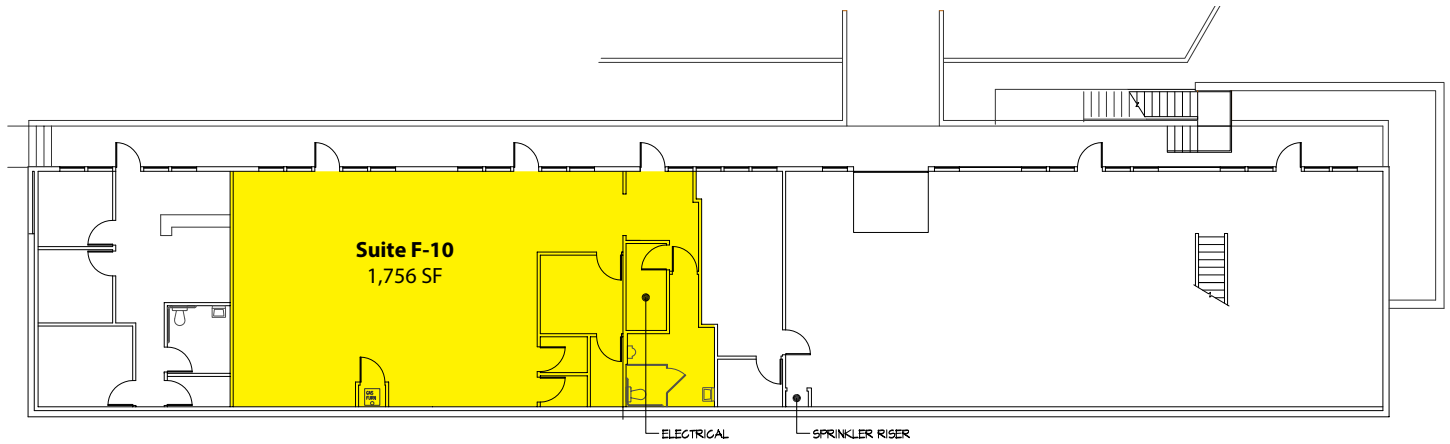
The information provided has been obtained from sources believed reliable. While we do not doubt its accuracy, we have not verified and make no guarantee, warranty or representation about it. It is your sole responsibility to independently confirm its accuracy and completeness.

# GATEWAY POINTE BUSINESS PARK

2601-2715 Jahn Avenue NW, Gig Harbor, WA 98335

## Building F - 1<sup>st</sup> Floor

| Suite | Square Footage |
|-------|----------------|
| F-10  | 1,756 SF       |

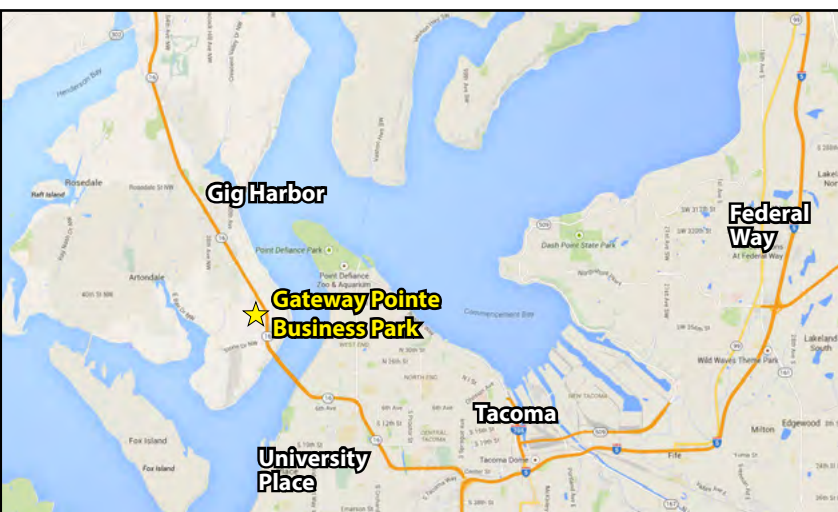


Keller Williams | 7525 28th Street W, University Place, WA  
phone: (253) 460-8640 fax: (253) 460-8650 | [www.kw.com](http://www.kw.com)

The information provided has been obtained from sources believed reliable. While we do not doubt its accuracy, we have not verified and make no guarantee, warranty or representation about it. It is your sole responsibility to independently confirm its accuracy and completeness.

# GATEWAY POINTE BUSINESS PARK

2601-2715 Jahn Avenue NW, Gig Harbor, WA 98335



For more information, contact:

KELLER WILLIAMS

**Mike Armanious, CCIM**

(253) 988-6115

marmanious@kw.com

ROSEN~HARBOTTLE CRE

**Caleb Farnworth, CCIM**

(425) 289-2235

calebf@rosenharbottle.com

Keller Williams | 7525 28th Street W, University Place, WA  
phone: (253) 460-8640 fax: (253) 460-8650 | www.kw.com

The information provided has been obtained from sources believed reliable. While we do not doubt its accuracy, we have not verified and make no guarantee, warranty or representation about it. It is your sole responsibility to independently confirm its accuracy and completeness.