

# SCRIBER BUSINESS CENTER

19910 50th Avenue W, Lynnwood, WA 98036



## OFFICE FOR LEASE

650 SF Available

\$18.00/SF, Full Service

### FEATURES:

- Quiet, Neighborhood Setting
- Abundant Natural Light
- Located Near Lynnwood Transit Center  
- 500' from Transit Lines 115, 116 & 120
- Quick Access to I-5, I-405 & Hwy 99
- Free Parking



For more information, contact:

**ROSEN~HARBOTTLE  
COMMERCIAL REAL ESTATE**

**Grant Rubenstein**

(425) 289-2220

grant@rosenharbottle.com

**Brian Stewart**

(425) 289-2222

brians@rosenharbottle.com

www.rosenharbottle.com

Rosen~Harbottle Commercial Real Estate | P.O. Box 5003 Bellevue, WA 98009-5003  
phone: (425) 454-3030 fax: (425) 454-6705 | www.rosenharbottle.com

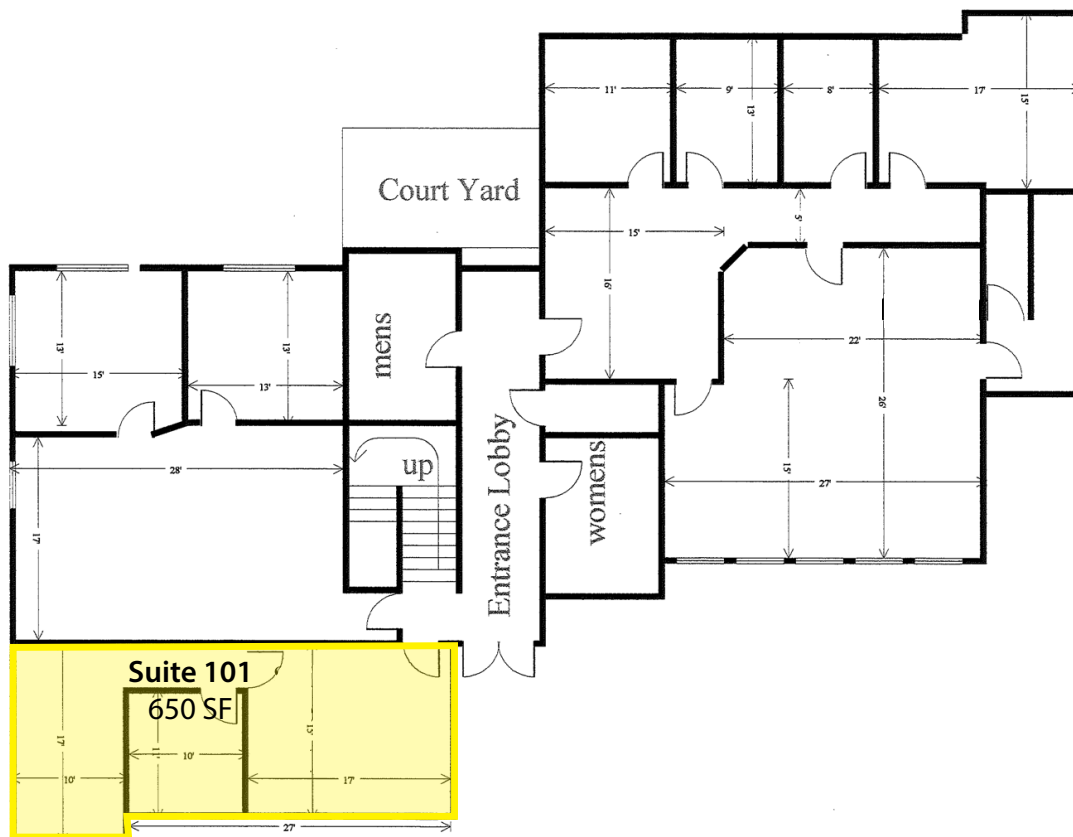
The information provided has been obtained from sources believed reliable. While we do not doubt its accuracy, we have not verified and make no guarantee, warranty or representation about it. It is your sole responsibility to independently confirm its accuracy and completeness.

# SCRIBER BUSINESS CENTER

19910 50th Avenue W, Lynnwood, WA 98036

## First Floor

| Suite | Square Feet |
|-------|-------------|
| 101   | 650 SF      |



For more information, contact:

### ROSEN~HARBOTTLE COMMERCIAL REAL ESTATE

**Grant Rubenstein**  
(425) 289-2220  
grant@rosenharbottle.com

**Brian Stewart**  
(425) 289-2222  
brians@rosenharbottle.com

[www.rosenharbottle.com](http://www.rosenharbottle.com)

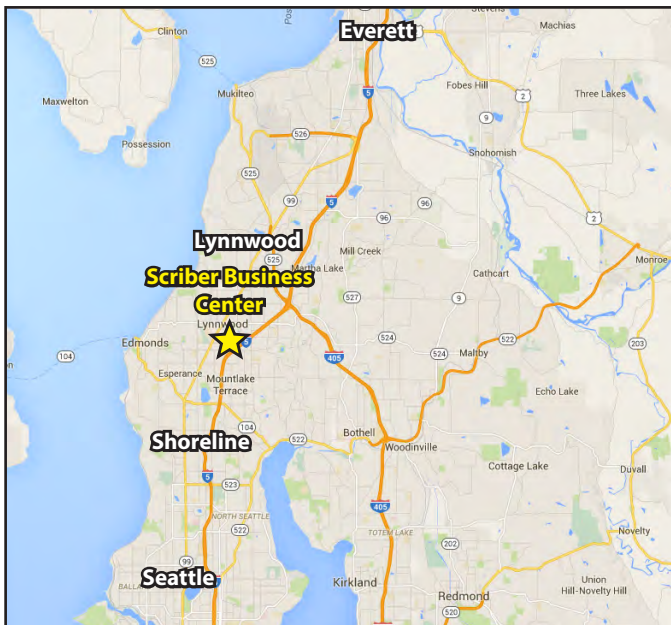
Rosen~Harbottle Commercial Real Estate | P.O. Box 5003 Bellevue, WA 98009-5003  
phone: (425) 454-3030 fax: (425) 454-6705 | [www.rosenharbottle.com](http://www.rosenharbottle.com)

The information provided has been obtained from sources believed reliable. While we do not doubt its accuracy, we have not verified and make no guarantee, warranty or representation about it. It is your sole responsibility to independently confirm its accuracy and completeness.



# SCRIBER BUSINESS CENTER

19910 50th Avenue W, Lynnwood, WA 98036



For more information, contact:

**ROSEN~HARBOTTLE  
COMMERCIAL REAL ESTATE**

**Grant Rubenstein**

(425) 289-2220

grant@rosenharbottle.com

**Brian Stewart**

(425) 289-2222

brians@rosenharbottle.com

www.rosenharbottle.com

Rosen~Harbottle Commercial Real Estate | P.O. Box 5003 Bellevue, WA 98009-5003  
phone: (425) 454-3030 fax: (425) 454-6705 | [www.rosenharbottle.com](http://www.rosenharbottle.com)

The information provided has been obtained from sources believed reliable. While we do not doubt its accuracy, we have not verified and make no guarantee, warranty or representation about it. It is your sole responsibility to independently confirm its accuracy and completeness.

