

ALDERWOOD EAST SHOPPING CENTER

18910-18930 28th Avenue W, Lynnwood, WA 98036



**AVAILABLE
FOR LEASE**



For more information, contact:

**ROSEN~HARBOTTLE
COMMERCIAL REAL ESTATE**

Jack Rosen

(425) 289-2221

jack@rosenharbottle.com

Grant Rubenstein

(425) 289-2220

grant@rosenharbottle.com

www.rosenharbottle.com

BEST SPACE IN ALDERWOOD!

2,316 SF - 5,000 SF Available

\$23.00-\$26.00 / SF, NNN

FEATURES:

- High-Exposure Retail Shopping Center
- Frontage on Alderwood Mall Blvd Near I-5
- Directly Across from Alderwood Mall
- 198,000 Cars per Day on I-5
20,000+ Cars per Day on 28th Avenue
- Tenants Include Azteca, Sturtevant's, Spa
24 Hour Fitness, 911 Driving School &
Deep Roots Tattoo
- 1,050 SF Office Available: \$30.00/SF, Gross

Rosen~Harbottle Commercial Real Estate | P.O. Box 5003 Bellevue, WA 98009-5003
phone: (425) 454-3030 fax: (425) 454-6705 | www.rosenharbottle.com

The information provided has been obtained from sources believed reliable. While we do not doubt its accuracy, we have not verified and make no guarantee, warranty or representation about it. It is your sole responsibility to independently confirm its accuracy and completeness.

ALDERWOOD EAST SHOPPING CENTER

18910-18930 28th Avenue W, Lynnwood, WA 98036

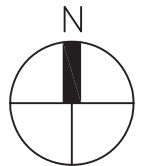
PARKING:

WEST OF 29TH AVE. W.	
STANDARD	152
COMPACT	2
HANDICAP	8
SUB-TOTAL:	162

EAST OF 29TH AVE. W.	
STANDARD	169
COMPACT	2
HANDICAP	5
SUB-TOTAL:	176

TOTAL: 338

18910 28th AVE. W. - 1st FLOOR

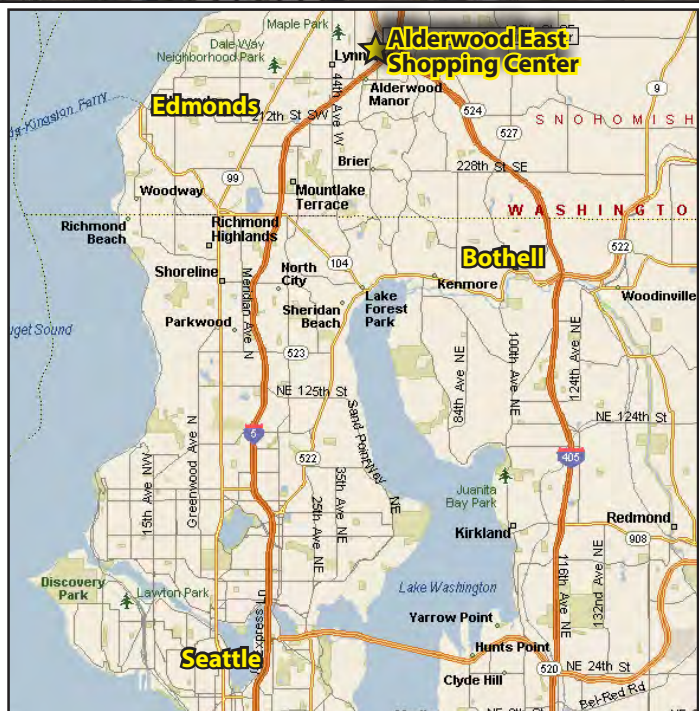
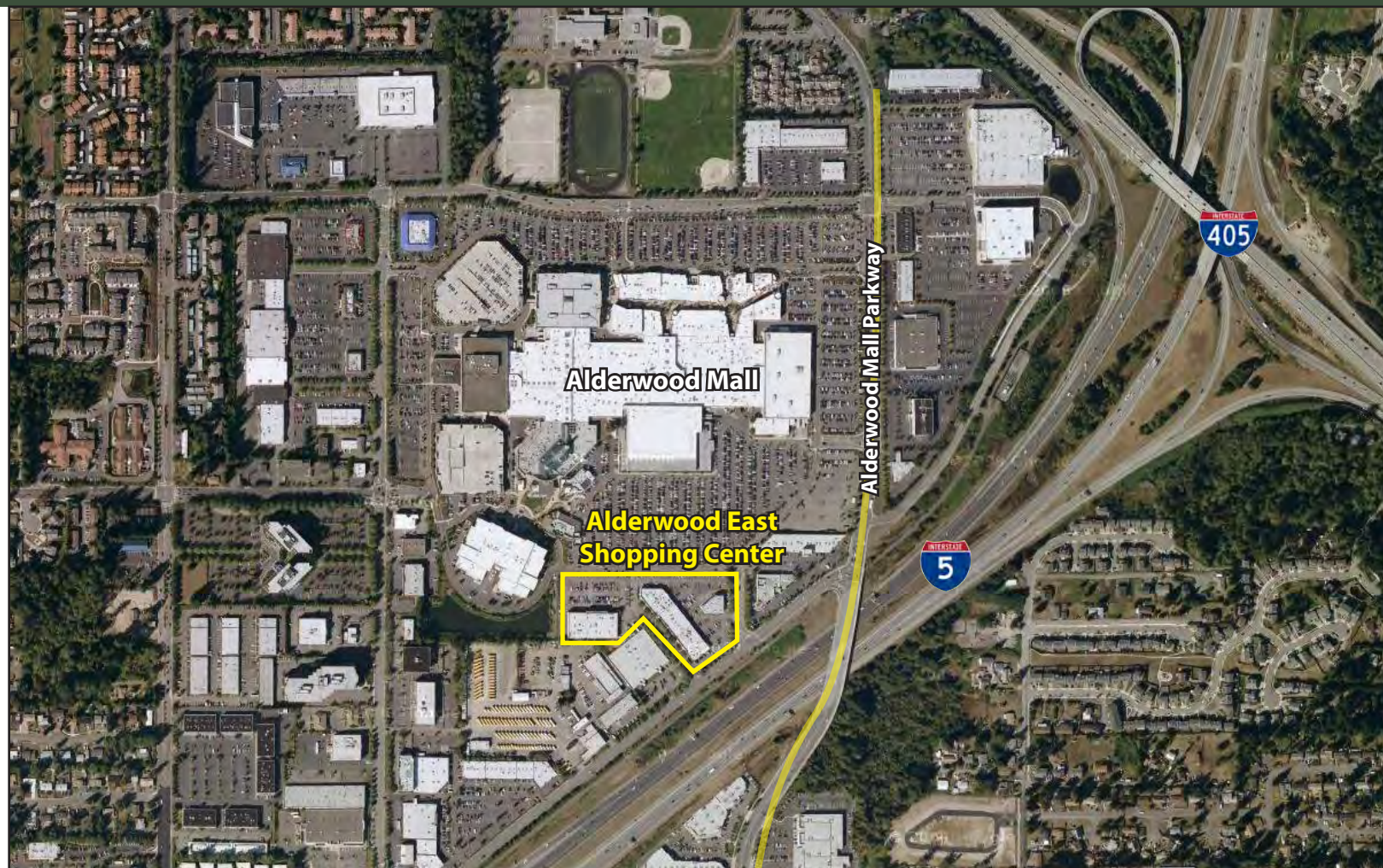


Rosen-Harbottle Commercial Real Estate | P.O. Box 5003 Bellevue, WA 98009-5003
 phone: (425) 454-3030 fax: (425) 454-6705 | www.rosenharbottle.com

The information provided has been obtained from sources believed reliable. While we do not doubt its accuracy, we have not verified and make no guarantee, warranty or representation about it. It is your sole responsibility to independently confirm its accuracy and completeness.

ALDERWOOD EAST SHOPPING CENTER

18910-18930 28th Avenue W, Lynnwood, WA 98036



For more information, contact:

**Rosen~Harbottle
Commercial Real Estate**

Jack Rosen

(425) 289-2221

jack@rosenharbottle.com

Grant Rubenstein

(425) 289-2220

grant@rosenharbottle.com

www.rosenharbottle.com

Rosen-Harbottle Commercial Real Estate | P.O. Box 5003 Bellevue, WA 98009-5003
phone: (425) 454-3030 fax: (425) 454-6705 | www.rosenharbottle.com

The information provided has been obtained from sources believed reliable. While we do not doubt its accuracy, we have not verified and make no guarantee, warranty or representation about it. It is your sole responsibility to independently confirm its accuracy and completeness.