

OFC/MED/EXC  
**LEASE**



# BONNEY LAKE VILLAGE SHOPPING CENTER

21135 - 21137 State Route 410 E | Bonney Lake, WA

**Jack Rosen**

425.289.2221

jack@rosenharbottle.com

**Brian Stewart**

425.289.2222

brians@rosenharbottle.com

**Connor Feuerberg**

425.279.7943

connor@rosenharbottle.com

425.454.3030  
rosenharbottle.com

PO Box 5003  
Bellevue, WA 98009 - 5003





# OFFICE / MEDICAL & RARE EXECUTIVE SUITES

**\$16.00/SF, NNN**

**\$550 - \$575/Month**

**139 SF - 5,157 SF Available**

## BUILDING & LOCATION FEATURES:

- Abundant Parking
- Building Signage For Larger Suites
- Close Proximity to Tehaleh Community
- Elevator Access
- Recently Upgraded Lobby & Finishes



# PROPERTY DETAILS

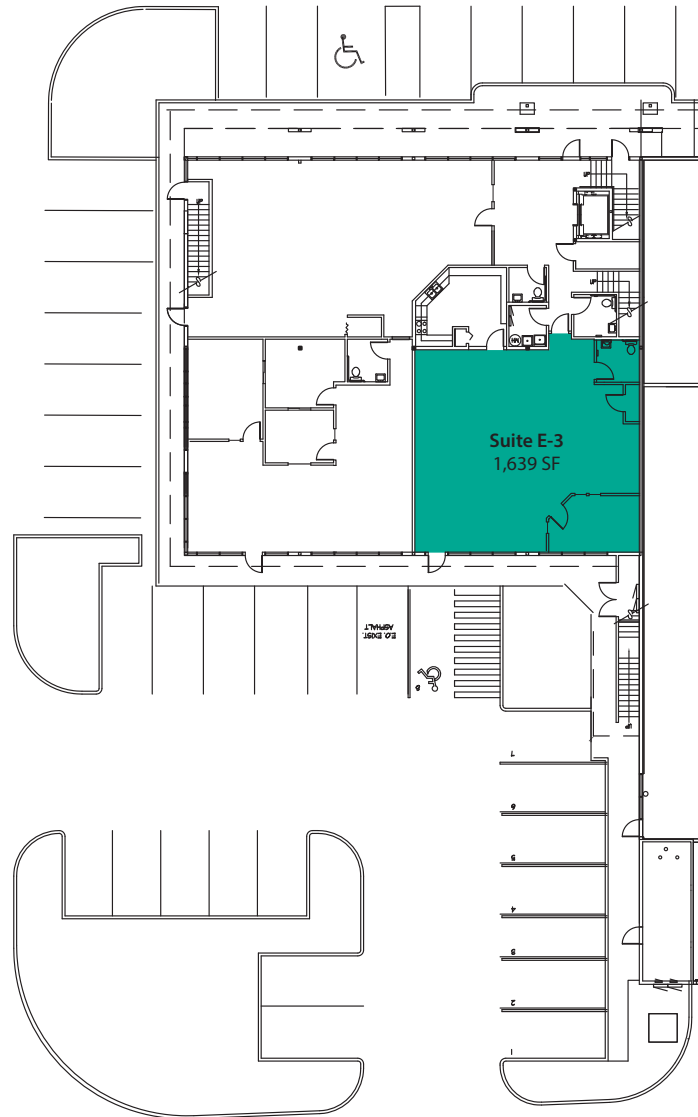


## FIRST & SECOND FLOOR - SUITE DETAILS

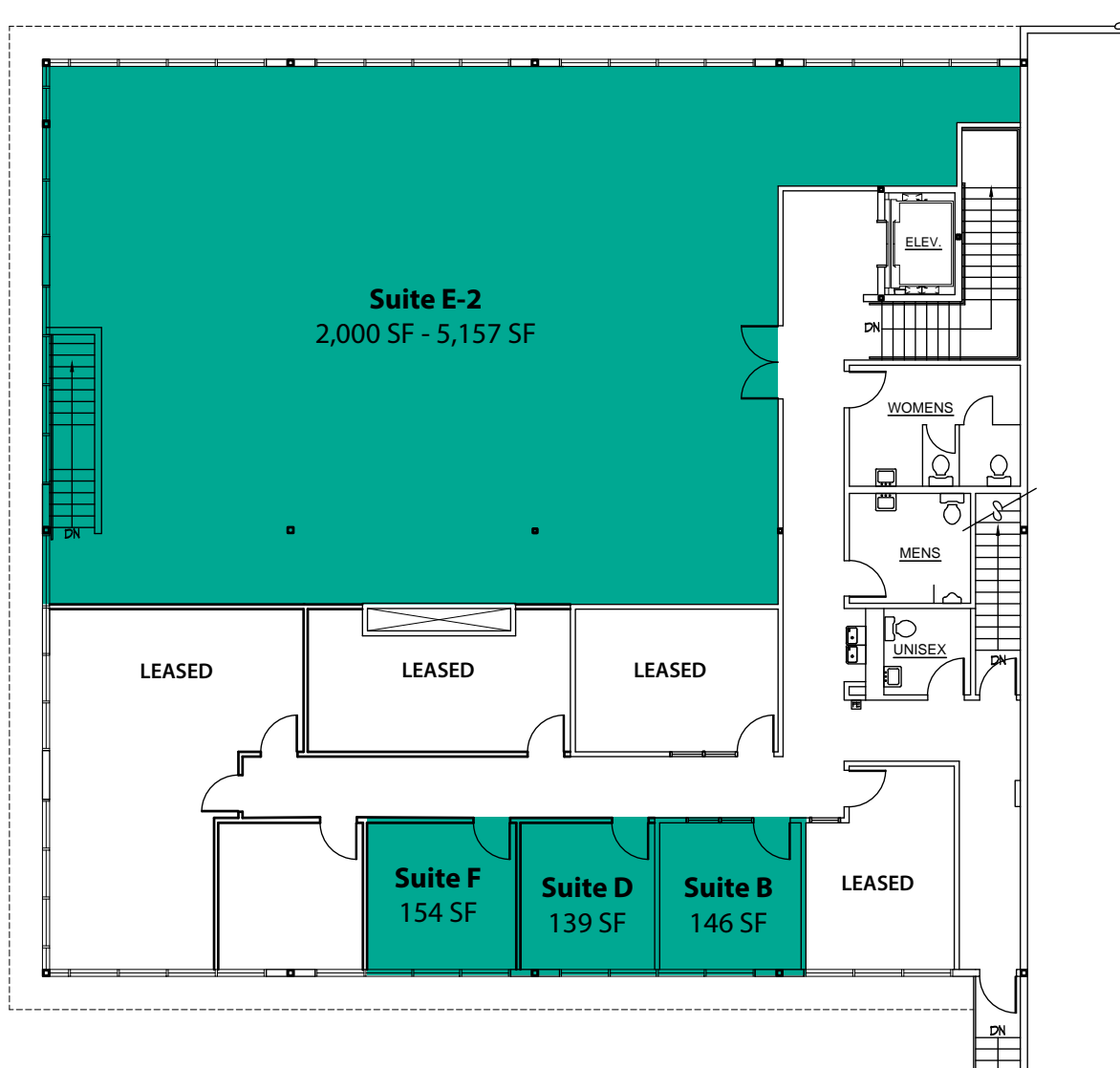
Suites	Square Feet	Rate
E2	2,000 - 5,157 SF	\$16.00/SF, NNN
Notes: Second floor office space, open floor plan with extensive window line		
E3	1,639 SF	\$16.00/SF, NNN

Exec Suites	Square Feet	Rate
B	146 SF	\$550/Month
D	139 SF	\$550/Month
F	154 SF	\$575/Month

# FIRST FLOOR PLAN



# SECOND FLOOR PLAN





# LOCATION MAP

