

OFFICE  
LEASE



# MEADOW CREEK OFFICE PARK

22500 - 22619 SE 64th Place | Issaquah, WA

**Brian Stewart**

425.289.2222

brians@rosenharbottle.com

425.454.3030  
rosenharbottle.com

PO Box 5003  
Bellevue, WA 98009 - 5003





# CLASS A OFFICE SPACES

**453 SF - 2,044 SF Available**

**\$28.00/SF, NNN**

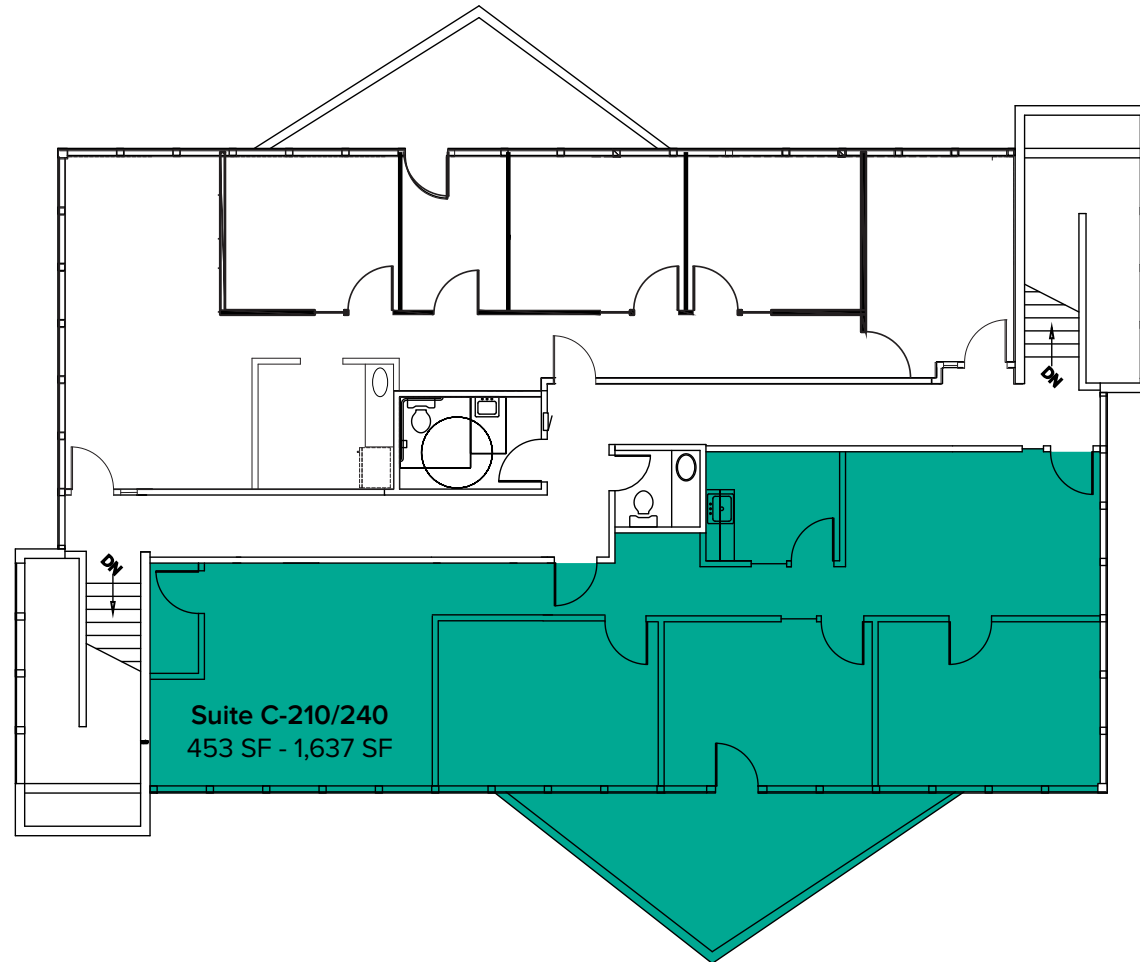
## OFFICE PARK DETAILS:

- Minutes from Costco Headquarters
- Amazing Location off I-90 at Front St./E Lake Sammamish Pkwy
- Nearby Amenities Include Retailers, Grocers, Restaurants, Hospital & Parks
- Park-Like, Campus Setting with Free Surface Parking

# BUILDING C (22530) FLOOR PLAN

| Suite     | Square Feet    | Rate            |
|-----------|----------------|-----------------|
| C-210/240 | 453 SF - 1,637 | \$28.00/SF, NNN |

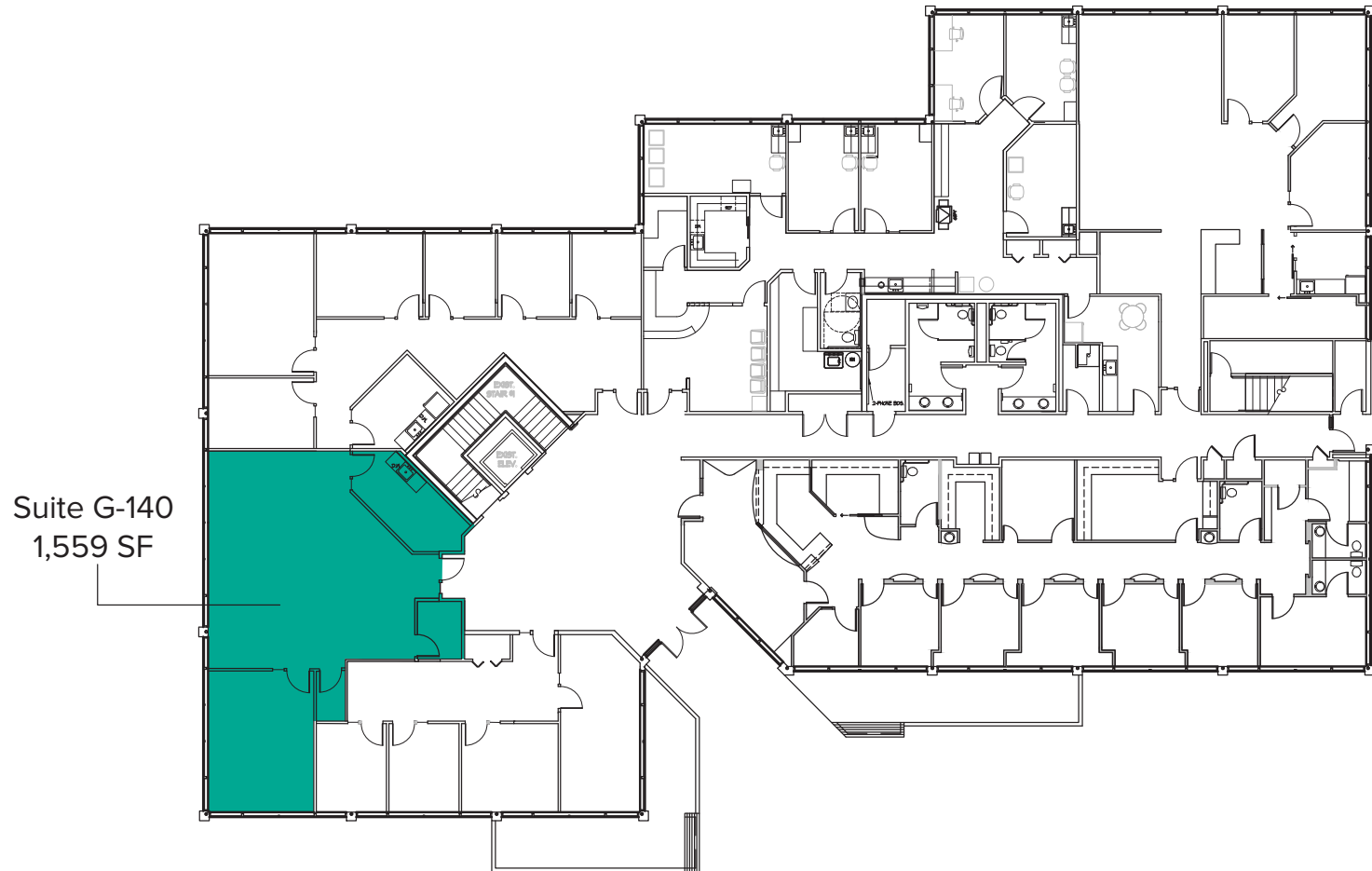
Notes: Second floor office with 3 Private Offices, Break Room, Open Work Space, and Balcony.  
Space is Demisable. **Available 4/1/2021.**



# BUILDING G (22500) FIRST LEVEL FLOOR PLAN

| Suite | Square Feet | Rate            |
|-------|-------------|-----------------|
| G-140 | 1,559 SF    | \$28.00/SF, NNN |

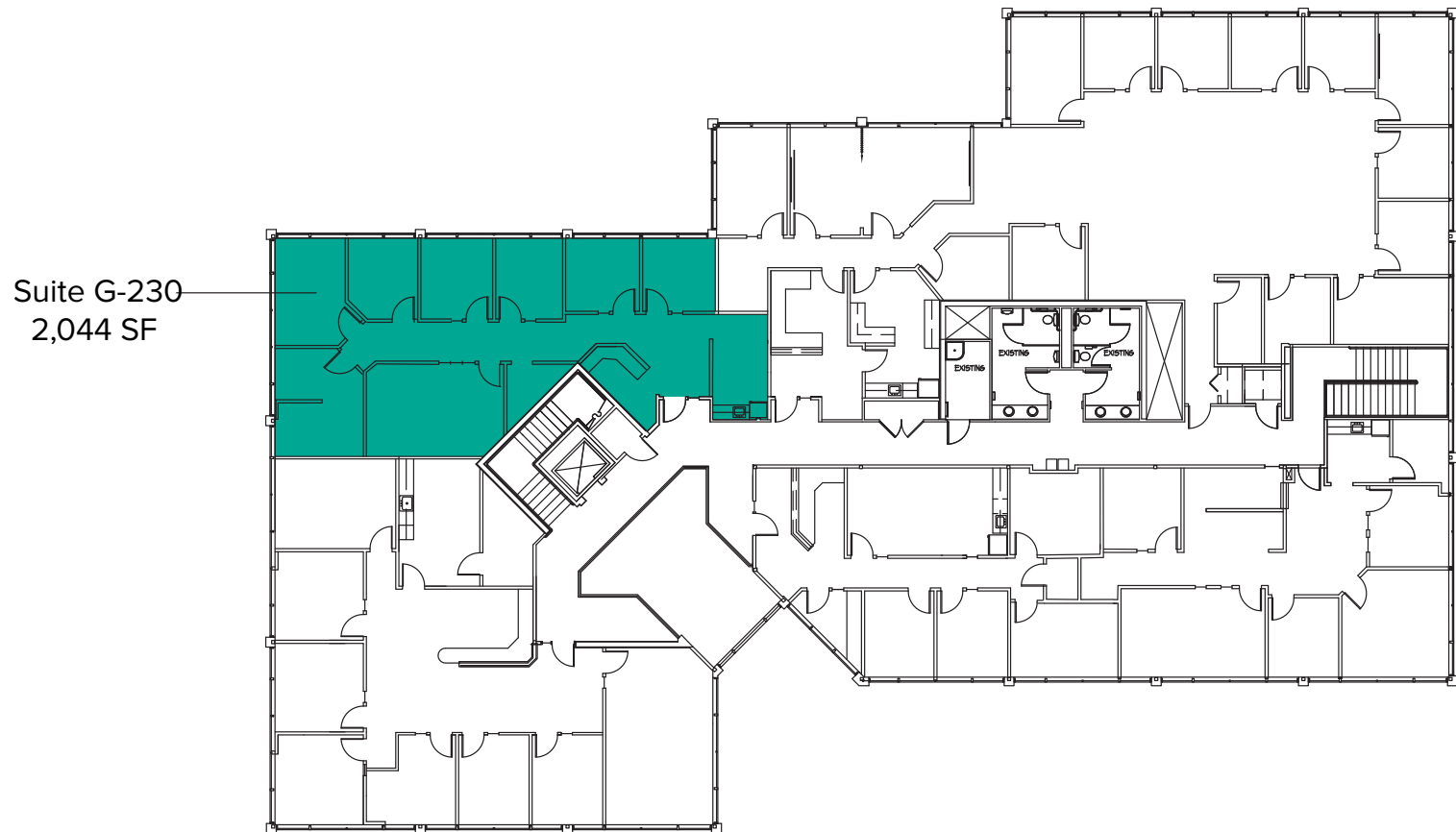
Notes: First Floor Office. 1 Private Office, Break Room, Storage, and Open Work Space.  
**Available Now.**



# BUILDING G (22500) SECOND LEVEL FLOOR PLAN

| Suite | Square Feet | Rate            |
|-------|-------------|-----------------|
| G-230 | 2,044 SF    | \$28.00/SF, NNN |

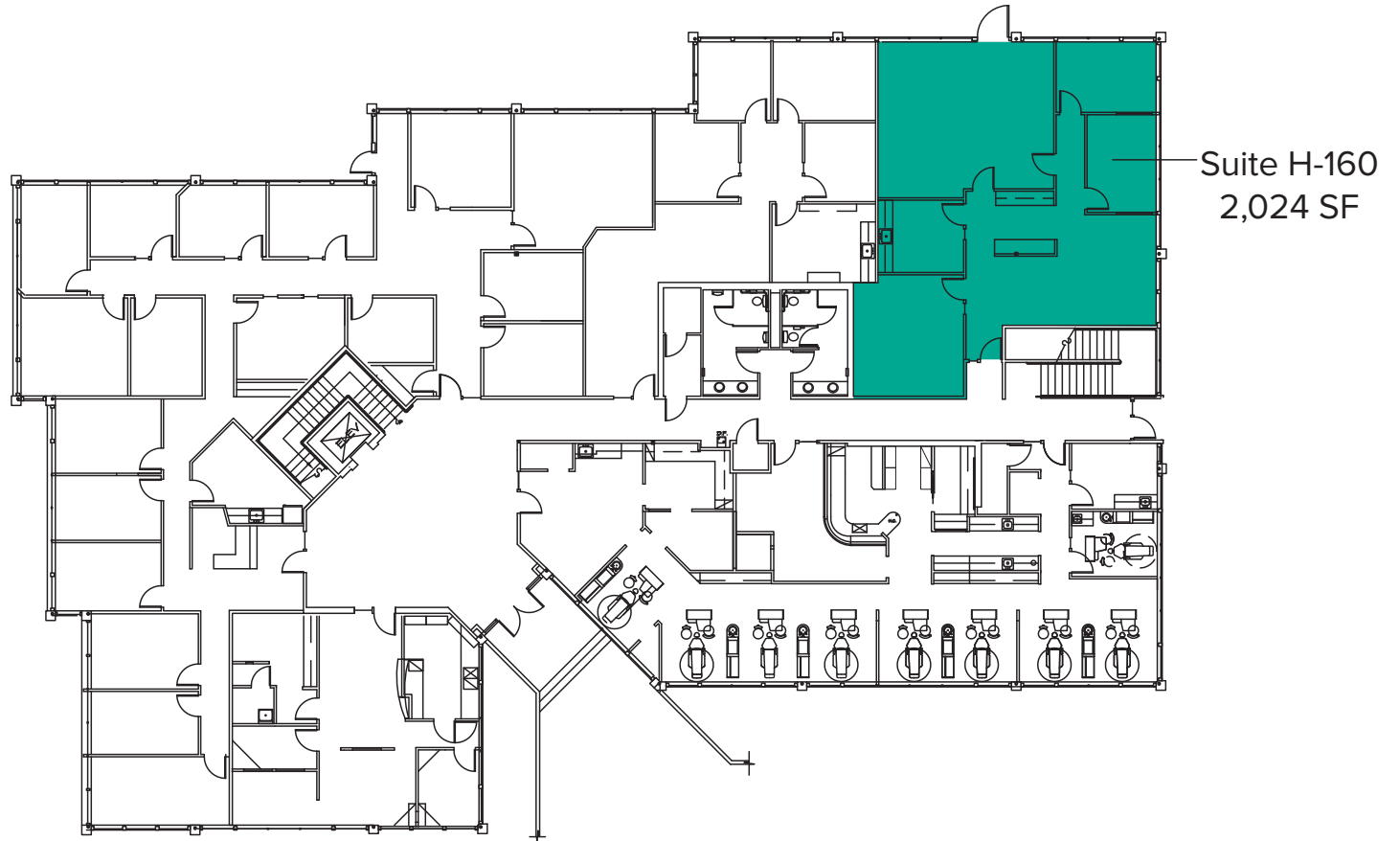
Notes: Second Floor Office. 7 Private Offices, Break Room, 1 Conference Room, and Reception Space. **Available 11/1/2020**



# BUILDING H (22525) FLOOR PLAN

| Suite | Square Feet | Rate            |
|-------|-------------|-----------------|
| H-160 | 2,024 SF    | \$28.00/SF, NNN |

Notes: Direct and Lobby Entrances. 2 Private Offices, 1 Conference Room, Break Room, and Open Work Space. **Available with 30 days' notice.**



# SITE PLAN



# LOCATION MAP

